



Bishop Herbert House, 34 Globe Place - NR2 2SG

Discover a lucrative investment with an impressive 11% yield potential! Introducing an exceptional 21-bedroom HMO located in NR2, near UEA, N&N Hospital, and the city center. Currently, 17 rooms are rented, generating a £93,000 (gross) annually, but with all 21 rooms updated and rented, this property could bring in over £130,000 (gross), offering an attractive 11% yield. Subject to all permissions being granted.

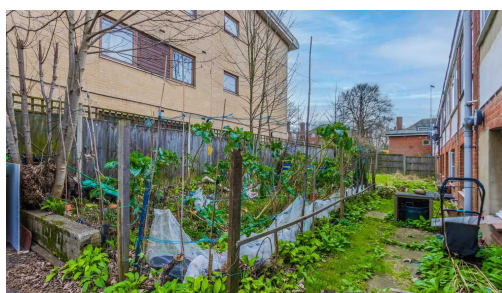
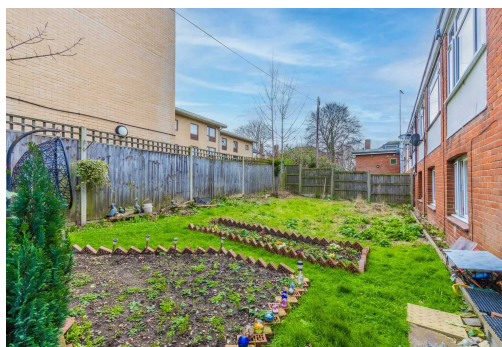
Location

Globe Place, situated in the heart of NR2, is an address that epitomizes the perfect blend of urban convenience and tranquility. Nestled amidst the vibrant streets of Norwich, NR2 offers a diverse range of amenities and cultural attractions, making it a popular destination for residents and visitors alike. From the trendy cafes and independent shops to the historic landmarks and green spaces, NR2 offers something for everyone. With excellent transport links and easy access to the city center, Globe Place is the ideal base for exploring all that NR2 has to offer.



Agents Note

We understand the property will be sold freehold, connected to all mains services. Electric heating throughout.



Globe Place

This property offers an exciting investment opportunity for astute buyers looking to capitalise on the growing demand for affordable, shared living spaces. The current HMO license is set for 17 rooms to be rented out at one time, those look to extend the license to all 21 rooms would need to contact the local council for permission. The property offers great potential to generate a significant rental income

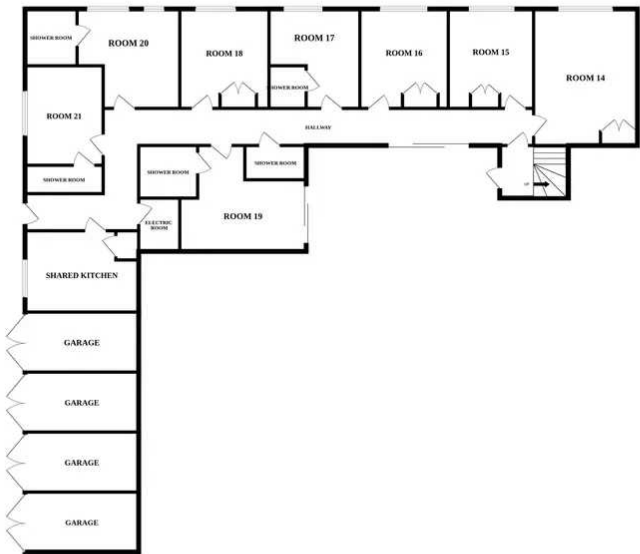
Set across multiple levels, this property offers a variety of living options for tenants. With four generous-sized garages and useful courtyard areas. The shared kitchen areas are furnished with units and appliances to ensure all residents needs are met and the shared shower rooms are conveniently located throughout the property, offering tenants the comfort and convenience of some en-suite facilities.

Currently there are 17 rooms being rented out between £400pcm - £500pcm acquiring a gross yield of 8.48%. However the full with the right permission to extend the licensing to all 21 rooms, you could produce a potential gross yield of 11.89%.

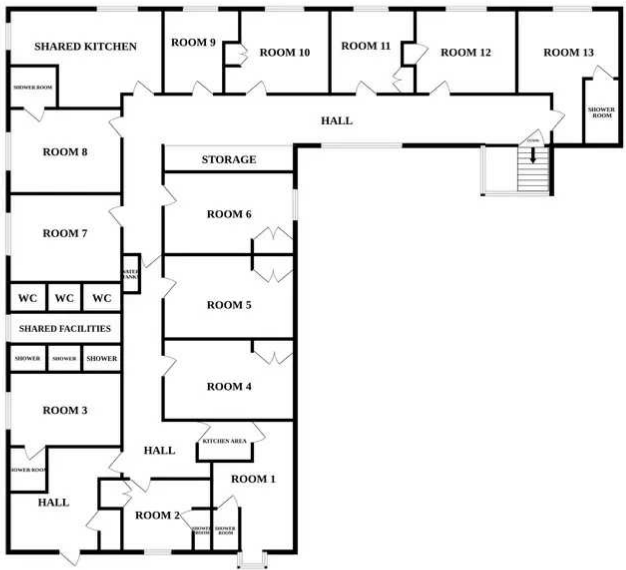
Speak to our Lettings team to discuss our services and how we can help.



GROUND FLOOR



1ST FLOOR



Whilst every attempt has been made to ensure the accuracy of the floorplan contained here, measurements of doors, windows, rooms and any other items are approximate and no responsibility is taken for any error, omission or mis-statement. This plan is for illustrative purposes only and should be used as such by any prospective purchaser. The services, systems and appliances shown have not been tested and no guarantee as to their operability or efficiency can be given.
Made with Metropix 5/2024