



12 Orchard Close, Mundesley
£340,000

12 Orchard Close

Mundesley, Norwich

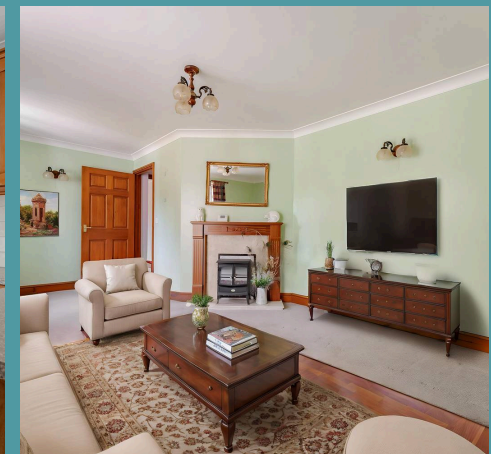
Just moments from the sandy shores of Mundesley Beach, this detached three-bedroom bungalow offers laid-back coastal living in a peaceful cul-de-sac setting. Immaculately maintained throughout, the property features generous living space, a bright conservatory, and well-planned, low-maintenance gardens. The modern kitchen and stylish shower room sit alongside three well-proportioned bedrooms, making it ideal for both full-time living or a seaside escape. A private driveway and garage add extra convenience, while the village's local amenities are just a short stroll away. With no onward chain and easy access to North Walsham, this home is ready to enjoy from day one.

Council Tax band: C

Tenure: Freehold

EPC Energy Efficiency Rating: C

EPC Environmental Impact Rating: C





12 Orchard Close

Mundesley, Norwich

Just moments from the sandy shores of Mundesley Beach, this detached three-bedroom bungalow offers laid-back coastal living in a peaceful cul-de-sac setting. Immaculately maintained throughout, the property features generous living space, a bright conservatory, and well-planned, low-maintenance gardens. The modern kitchen and stylish shower room sit alongside three well-proportioned bedrooms, making it ideal for both full-time living or a seaside escape. A private driveway and garage add extra convenience, while the village's local amenities are just a short stroll away. With no onward chain and easy access to North Walsham, this home is ready to enjoy from day one.

The Location

Situated at Orchard Close in Mundesley, this property is a beach lover's location. You're just a short stroll away from the beautiful Mundesley Beach, allowing you to enjoy the sand, sea and coastal views whenever you wish. For your everyday needs and convenience, a Tesco supermarket is within easy reach.

This location offers an ideal balance of rural and accessibility. While you can relish the quiet surroundings, the bustling town of North Walsham is just a short drive away, providing you with even more amenities and options for schooling. Whether you seek a beach location or access to nearby towns, this location has it all.

Orchard Close, Mundesley

Set in a quiet cul-de-sac within the ever-popular





TOTAL FLOOR AREA : 976 sq.ft. (90.7 sq.m.) approx.

Whilst every attempt has been made to ensure the accuracy of the floorplan contained here, measurements of doors, windows, rooms and any other items are approximate and no responsibility is taken for any error, omission or mis-statement. This plan is for illustrative purposes only and should be used as such by any prospective purchaser. The services, systems and appliances shown have not been tested and no guarantee as to their operability or efficiency can be given.

Made with Metropix ©2025