



24 Roedich Drive, Taverham

Guide Price £400,000



# 24 Roedich Drive

Taverham, Norwich

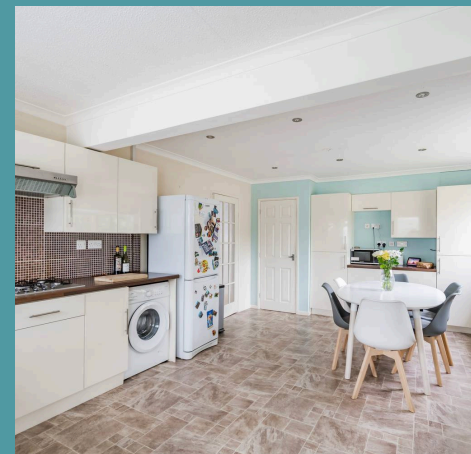
Guide Price £400,000 - £425,000 An excellent location combined with versatile two-storey living makes this detached chalet bungalow an ideal family home. With four/five spacious bedrooms, multiple reception areas, and a well-maintained enclosed garden, it offers both comfort and practicality for growing families. The open-plan kitchen and dining area, alongside a bright conservatory, create a welcoming space for both relaxation and entertaining. Upstairs, two generously sized bedrooms and a modern shower room provide flexibility for various living arrangements. With ample parking, a detached garage, and easy access to local amenities, schools, and transport links, this property offers everything for a convenient and enjoyable lifestyle.

Council Tax band: C

Tenure: Freehold

EPC Energy Efficiency Rating: C

EPC Environmental Impact Rating: C







## 24 Roedich Drive

Taverham, Norwich

Guide Price £400,000 - £425,000 An excellent location combined with versatile two-storey living makes this detached chalet bungalow an ideal family home. With four/five spacious bedrooms, multiple reception areas, and a well-maintained enclosed garden, it offers both comfort and practicality for growing families. The open-plan kitchen and dining area, alongside a bright conservatory, create a welcoming space for both relaxation and entertaining. Upstairs, two generously sized bedrooms and a modern shower room provide flexibility for various living arrangements. With ample parking, a detached garage, and easy access to local amenities, schools, and transport links, this property offers everything for a convenient and enjoyable lifestyle.

### The Location

Roedich Drive is perfectly situated in Taverham, offering excellent convenience. Just a short walk away, you'll find a One-Stop store, a Chinese takeaway and a local fish and chip shop, making everyday errands and meals easy. Taverham Junior School is within walking distance, while Ghost Hill and Nightingale Schools are also accessible on foot. For older children, Taverham High School is a short drive away.

Tesco and Lidl are nearby for all your grocery needs, and the Marriots Way walking trails offer great outdoor space for walks and cycling. The area is well-served by well-lit streets, ideal for evening strolls and Taverham Surgery and a local dentist are both within walking distance. With garden centre, two petrol stations, local car washes and





Ground Floor  
1143 sq.ft. (106.2 sq.m.) approx.

1st Floor  
264 sq.ft. (24.5 sq.m.) approx.



TOTAL FLOOR AREA : 1407 sq.ft. (130.7 sq.m.) approx.

Whilst every attempt has been made to ensure the accuracy of the floorplan contained here, measurements of doors, windows, rooms and any other items are approximate and no responsibility is taken for any error, omission or mis-statement. This plan is for illustrative purposes only and should be used as such by any prospective purchaser. The services, systems and appliances shown have not been tested and no guarantee as to their operability or efficiency can be given.  
Made with Metropix ©2025