



Minors & Brady

The Cottage, The Street, Sea Palling

Guide Price £300,000



# The Cottage, The Street

Sea Palling, Norwich

Guide Price £300,000 - £325,000. Cottage aesthetic in a coastal setting, this charming home blends traditional character with practical modern touches. Timber beams, latch doors and a rustic fireplace lend warmth and authenticity throughout, while thoughtful updates offer everyday comfort. The shaker-style kitchen with a stable door and skylight is both functional and full of personality. Three double bedrooms and a well-appointed family bathroom provide generous space for family or guests. With a low-maintenance garden, off-road parking, and a seamless flow of light and space, this property is ideal for relaxed coastal living.

Council Tax band: C

Tenure: Freehold

EPC Energy Efficiency Rating: E

EPC Environmental Impact Rating: D



Minors & Brad







## The Cottage, The Street

Sea Palling, Norwich

Guide Price £300,000 - £325,000. Cottage aesthetic in a coastal setting, this charming home blends traditional character with practical modern touches. Timber beams, latch doors and a rustic fireplace lend warmth and authenticity throughout, while thoughtful updates offer everyday comfort. The shaker-style kitchen with a stable door and skylight is both functional and full of personality. Three double bedrooms and a well-appointed family bathroom provide generous space for family or guests. With a low-maintenance garden, off-road parking, and a seamless flow of light and space, this property is ideal for relaxed coastal living.

### Location

Sea Palling is a picturesque coastal village offering a peaceful retreat with stunning beach views. It's perfect for those seeking a serene setting with easy access to the sea and scenic walking paths.

The village offers a welcoming community atmosphere and is well-connected to nearby towns for shopping, dining, and other amenities. With its charming coastal beauty, Sea Palling provides the ideal balance of quiet seaside living and convenient local services.

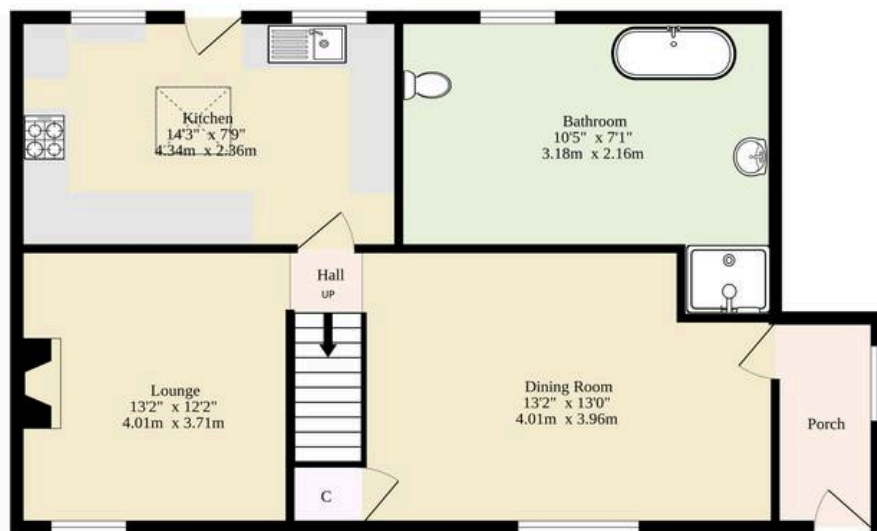
### The Street, Sea Palling

Step inside through a covered porch and into the dining room—an inviting, light-filled space designed for gathering. Timber beams above add a layer of rustic charm, while the layout flows effortlessly into the adjoining living spaces.

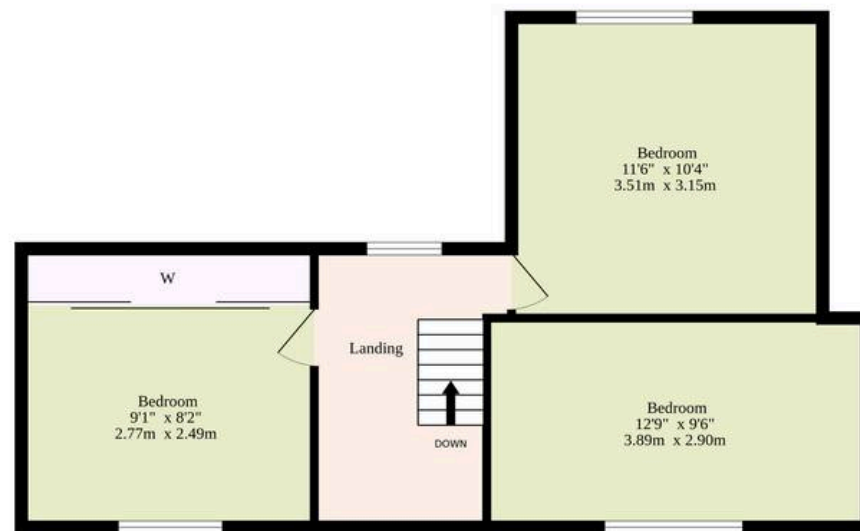




**Ground Floor**  
585 sq.ft. (54.3 sq.m.) approx.



**1st Floor**  
432 sq.ft. (40.1 sq.m.) approx.



**TOTAL FLOOR AREA : 1017 sq.ft. (94.5 sq.m.) approx.**

Whilst every attempt has been made to ensure the accuracy of the floorplan contained here, measurements of doors, windows, rooms and any other items are approximate and no responsibility is taken for any error, omission or mis-statement. This plan is for illustrative purposes only and should be used as such by any prospective purchaser. The services, systems and appliances shown have not been tested and no guarantee as to their operability or efficiency can be given.  
Made with Metropix ©2025

