



Edelweiss The Street, Colton  
£250,000



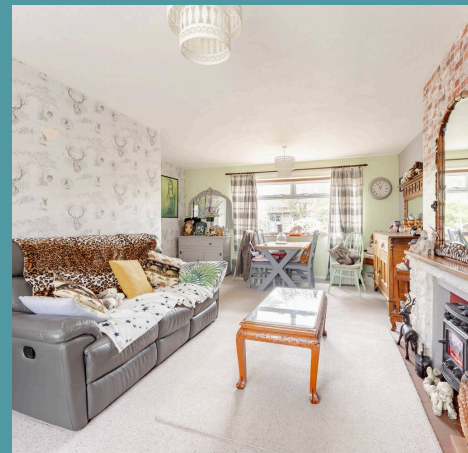
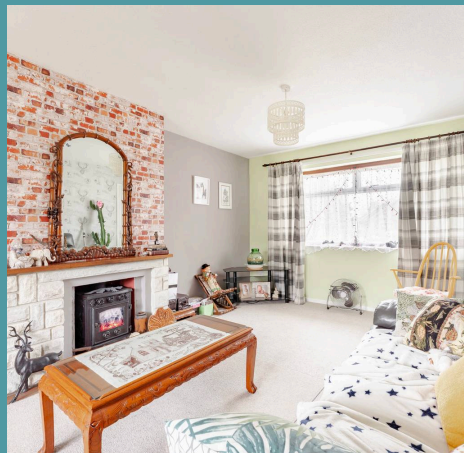
# Edelweiss The Street

Colton, Norwich

Edelweiss, located in the picturesque village of Colton, offers a charming two-bedroom chalet perfect for those seeking both ease of living and practicality. With a spacious gravelled driveway and beautifully maintained lawn, the property welcomes you with instant kerb appeal. Inside, you'll find a bright and inviting living space, including a well-appointed kitchen, a utility room, and a ground-floor bathroom for convenience. Upstairs, two generous bedrooms and an additional WC provide ample room for rest and relaxation. The large private garden, complete with a decked area and mature shrubs, adds a delightful outdoor setting to this well-maintained home.

Council Tax band: C

Tenure: Freehold







## Edelweiss The Street

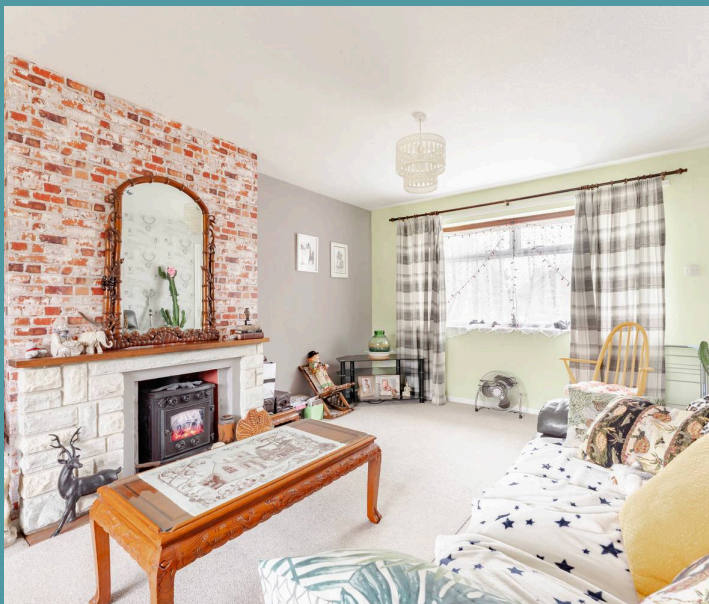
Colton, Norwich

Edelweiss, located in the picturesque village of Colton, offers a charming two-bedroom chalet perfect for those seeking both ease of living and practicality. With a spacious gravelled driveway and beautifully maintained lawn, the property welcomes you with instant kerb appeal. Inside, you'll find a bright and inviting living space, including a well-appointed kitchen, a utility room, and a ground-floor bathroom for convenience. Upstairs, two generous bedrooms and an additional WC provide ample room for rest and relaxation. The large private garden, complete with a decked area and mature shrubs, adds a delightful outdoor setting to this well-maintained home.

### The Location

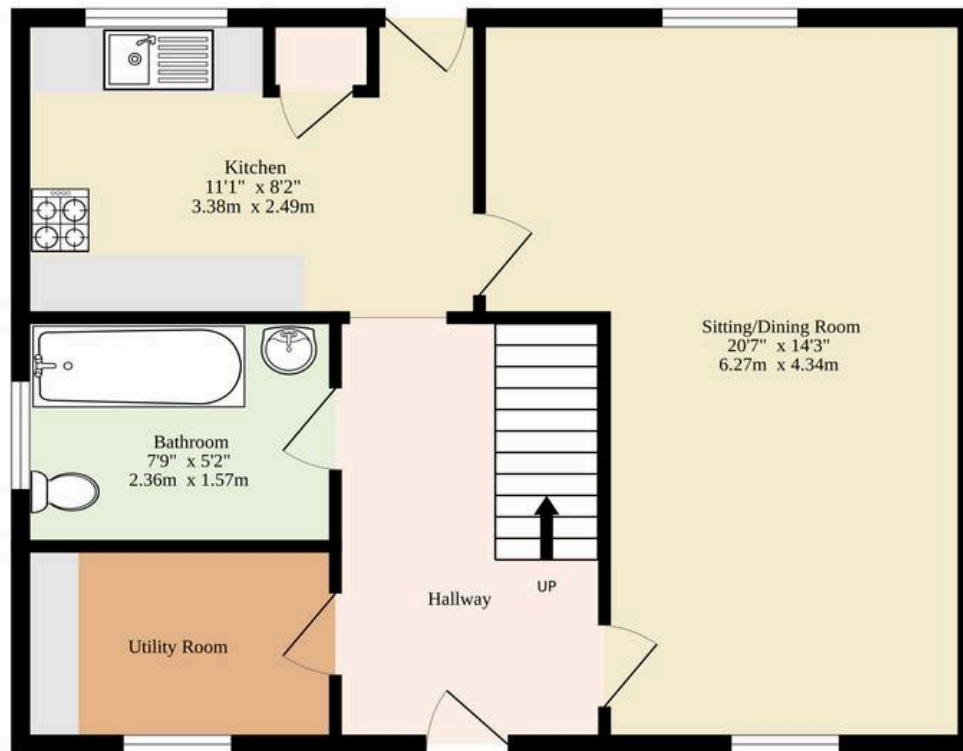
This charming property is located in the idyllic village of Colton, a serene and rural area within Norfolk. The village itself offers a warm sense of community with its local Church, shop, and a well-regarded pub, ensuring everyday conveniences are right on your doorstep. Colton is conveniently situated just 8 miles west of Norwich, now part of the parish of Marlingford, offering both peaceful surroundings and easy access to the bustling city. Norwich is renowned for its vibrant shopping scene, with a range of stores, markets, and cafes to explore.

Within the immediate vicinity, Colton enjoys an array of leisure and recreational facilities. The village is home to its own pub, where you can enjoy meals and drinks, and within just a three-mile radius, there are three additional pubs, perfect for enjoying a meal out or a relaxing pint. The area is

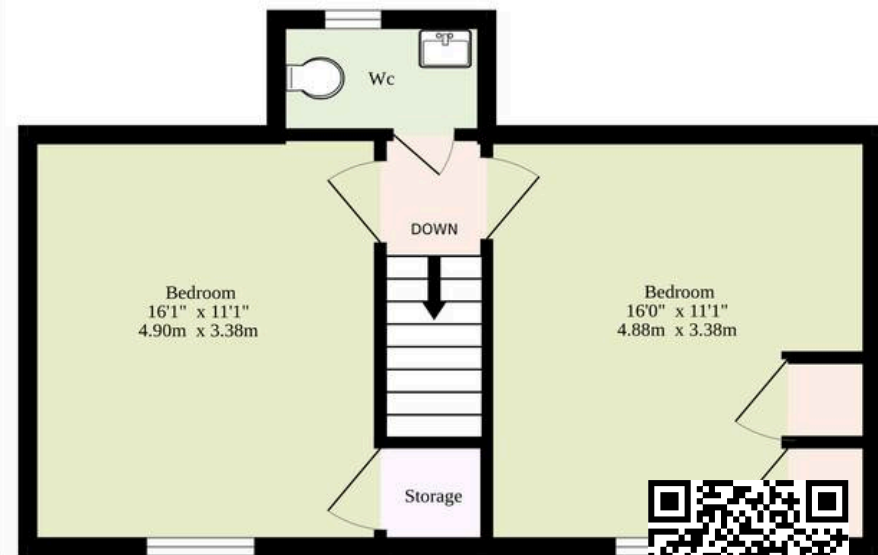




**Ground Floor**  
569 sq.ft. (52.9 sq.m.) approx.



**1st Floor**  
384 sq.ft. (35.7 sq.m.) approx.



**TOTAL FLOOR AREA : 953 sq.ft. (88.5 sq.m.) approx.**

Whilst every attempt has been made to ensure the accuracy of the floorplan contained here, measurements of doors, windows, rooms and any other items are approximate and no responsibility is taken for any error, omission or mis-statement. This plan is for illustrative purposes only and should be used as such by any prospective purchaser. The services, systems and appliances shown have not been tested and no guarantee as to their operability or efficiency can be given.  
Made with Metropix ©2025

