



6 Barton Road, Badersfield
£250,000

6 Barton Road

Badersfield, Norwich

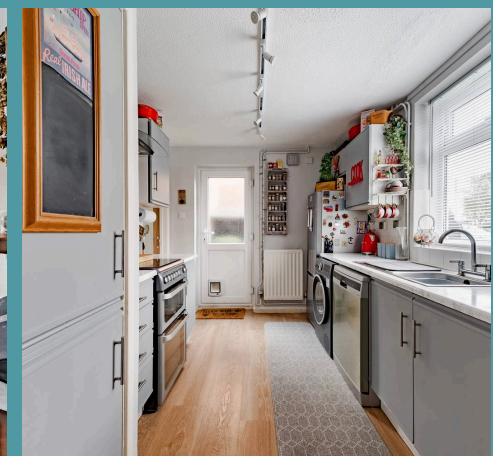
Large proportions for this type of home are immediately evident, with a spacious open-plan lounge and dining area that flows effortlessly into the private garden. The three well-sized bedrooms provide versatile living options, whether for a growing family, guests, or a home office. With a modern bathroom suite and a kitchen designed for ease of use, this property blends practicality with comfort. The south-facing garden offers an ideal setting for outdoor dining, while the en-bloc garage and off-road parking ensure convenience. Located in a well-connected community, this home is perfect for first-time buyers or investors seeking a move-in-ready, low-maintenance property.

Council Tax band: B

Tenure: Freehold

EPC Energy Efficiency Rating: D

EPC Environmental Impact Rating: C





6 Barton Road

Badersfield, Norwich

Large proportions for this type of home are immediately evident, with a spacious open-plan lounge and dining area that flows effortlessly into the private garden. The three well-sized bedrooms provide versatile living options, whether for a growing family, guests, or a home office. With a modern bathroom suite and a kitchen designed for ease of use, this property blends practicality with comfort. The south-facing garden offers an ideal setting for outdoor dining, while the en-bloc garage and off-road parking ensure convenience. Located in a well-connected community, this home is perfect for first-time buyers or investors seeking a move-in-ready, low-maintenance property.

The Location

Situated in the village of Badersfield, Norfolk, Ormesby Road offers a peaceful residential setting approximately 10 miles north of Norwich. This location provides convenient access to the B1150, connecting to nearby towns such as North Walsham and Coltishall. With local amenities including a convenience store, community centre, and children's playground.

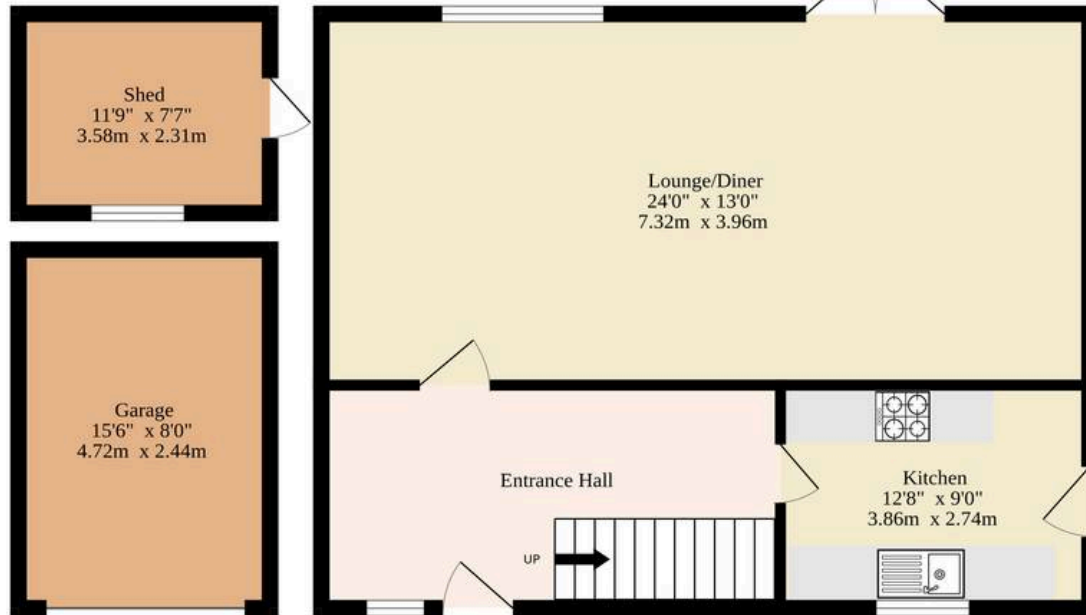
Surrounded by picturesque countryside, the area is ideal for outdoor activities, while the nearby city of Norwich offers a wealth of shopping, dining, and cultural attractions, making this an appealing location for those seeking a balance of rural charm and modern convenience.

Barton Road

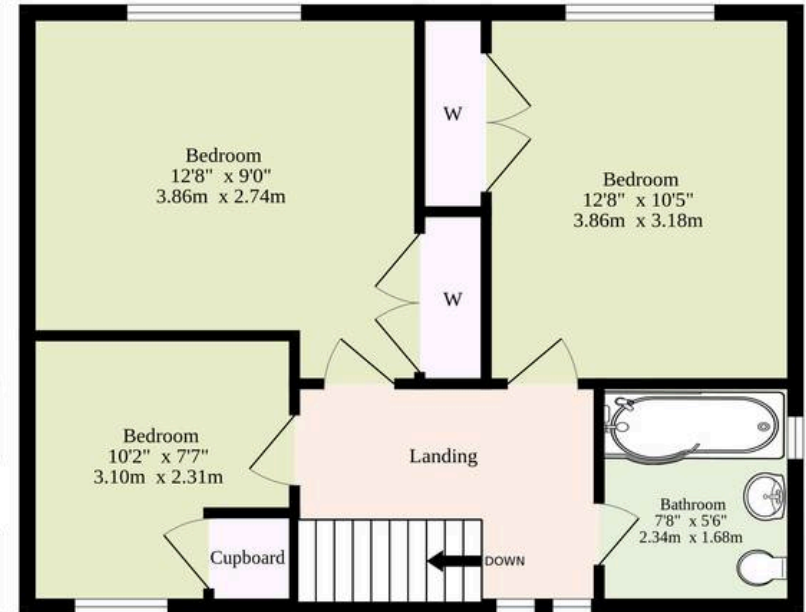
Set within a well-connected community in the heart of Badersfield, this well-kept end terrace



Ground Floor
717 sq.ft. (66.6 sq.m.) approx.



1st Floor
422 sq.ft. (39.2 sq.m.) approx.



TOTAL FLOOR AREA : 1139 sq.ft. (105.8 sq.m.) approx.

Whilst every attempt has been made to ensure the accuracy of the floorplan contained here, measurements of doors, windows, rooms and any other items are approximate and no responsibility is taken for any error, omission or mis-statement. This plan is for illustrative purposes only and should be used as such by any prospective purchaser. The services, systems and appliances shown have not been tested and no guarantee as to their operability or efficiency can be given.
Made with Metropix ©2025

