



12 Newton Close, Newton St. Faith
£250,000

12 Newton Close

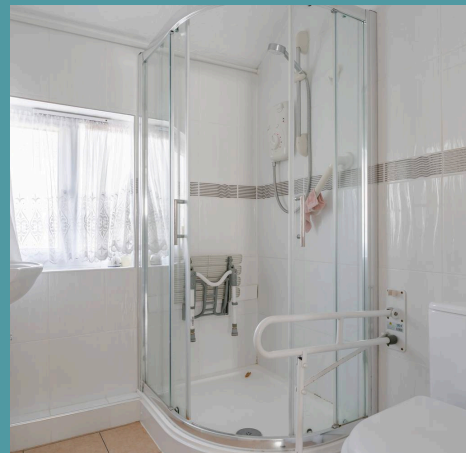
Newton St. Faith, Norwich

Low-maintenance living is in abundance with this two-bedroom bungalow, perfectly situated in the desirable Newton St Faith. Offering practical living spaces, including a spacious sitting/dining room with dual-aspect windows, the home provides ample room for both relaxation and entertaining. The well-equipped kitchen flows into the rear garden, enhancing the connection between indoor and outdoor living. Two generously sized bedrooms and a modern shower room ensure comfort and versatility for all lifestyles. The private rear garden, with its low-maintenance design, completes this property, offering a peaceful space to enjoy without the hassle of upkeep.

The Location

Positioned in the charming village of Newton St Faith, Newton Street offers a picturesque setting and the village of Horsford is just a stone's throw away that offers plentiful amenities. Residents can enjoy the convenience of a nearby local shop and chip shop, perfect for everyday essentials and delicious takeaways.

For those who love outdoor adventures, the nearby forest provides scenic walks and opportunities to explore nature. Alongside local parks and schooling options available for those with children. With easy access onto the NDR, residents can effortlessly reach neighbouring villages and towns, enhancing the accessibility and appeal of this attractive location.





12 Newton Close

Newton St. Faith, Norwich

Newton Close, Newton St. Faith

This two-bedroom bungalow, located in the desirable area of Newton St Faith, offers both comfort and practicality, making it a perfect choice for those seeking a low-maintenance lifestyle with a sense of privacy. To the side of the property, you'll find a private driveway leading to a garage, ensuring that parking is never a hassle. With the option to access the home either from the rear or via a loop around to the front, you are greeted by a welcoming entrance hallway that sets the tone for the rest of the property.

As you step into the inviting hallway, to your left is the generously proportioned sitting/dining room. Bathed in natural light thanks to dual aspect windows at both the front and rear, this space offers plenty of room for large sofas and a dining table, creating an ideal space for both relaxation and entertaining. The room's flexible layout allows you to tailor it to your personal preferences, making it a versatile hub of the home.





12 Newton Close

Newton St. Faith, Norwich

The kitchen, located just off the hallway, is both practical and functional, featuring ample space for essential appliances, plenty of work surfaces, and excellent storage options. With convenient access to the rear garden, it provides an effortless flow between indoor and outdoor living.

The bungalow boasts two good-sized bedrooms, each designed to suit your needs, whether for restful sleep or as a potential home office. These rooms offer plenty of natural light and space to arrange furniture as desired.

The shower room, designed with a modern corner shower, WC, and basin, completes the accommodation, providing both convenience and functionality. To the rear, the garden is mostly low-maintenance, featuring a small patch of grass and a shed for additional storage. This private outdoor space offers the perfect place to unwind and enjoy some fresh air.

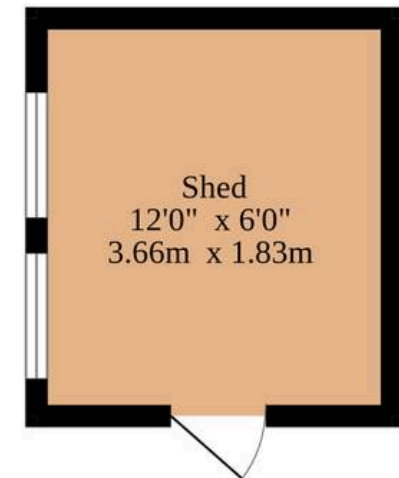
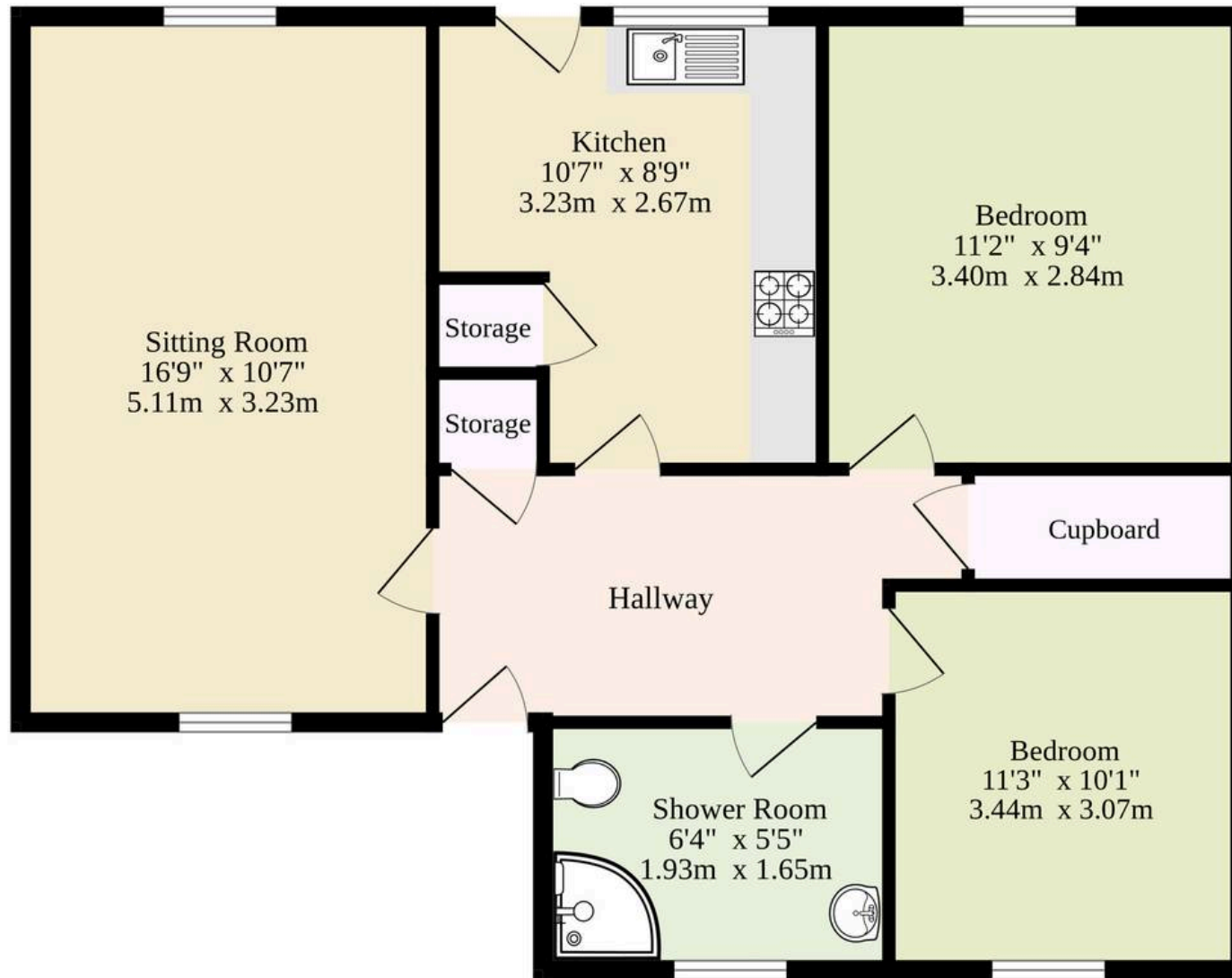
Agents Note

Sold Freehold

Connected to all mains services



Ground Floor
1179 sq.ft. (109.5 sq.m.) approx.



TOTAL FLOOR AREA : 1179 sq.ft. (109.5 sq.m.) approx.

Whilst every attempt has been made to ensure the accuracy of the floorplan contained here, measurements of doors, windows, rooms and any other items are approximate and no responsibility is taken for any error, omission or mis-statement. This plan is for illustrative purposes only and should be used as such by any prospective purchaser. The services, systems and appliances shown have not been tested and no guarantee as to their operability or efficiency can be given.

Made with Metropix ©2025