

213 Palgrave Road, Great Yarmouth

£210,000 Freehold

Recently renovated throughout with a fresh and considered finish, this four-bedroom mid-terraced home in Great Yarmouth offers far more than first meets the eye. A rare hallway entrance sets the tone from the moment you arrive — an uncommon feature in traditional terraces that immediately adds a sense of space and structure. Inside, three reception rooms provide flexible living options, including a front sitting room with bay window, a central space with patio doors ideal for a home office or playroom, and a separate dining room linked to the stylish new kitchen. Upstairs, four bright bedrooms and a well-finished bathroom with both bath and separate shower cater perfectly to everyday family life. Outside, the garden has been fully paved for easy upkeep, while on-street parking completes the picture of a home that's been updated with comfort and convenience in mind.

Council Tax band: B

Tenure: Freehold

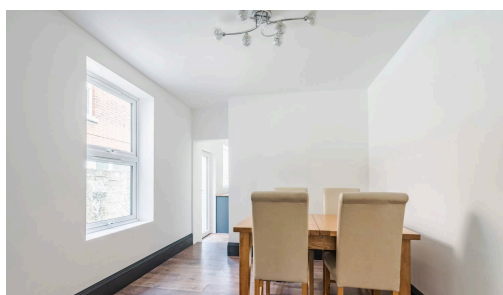
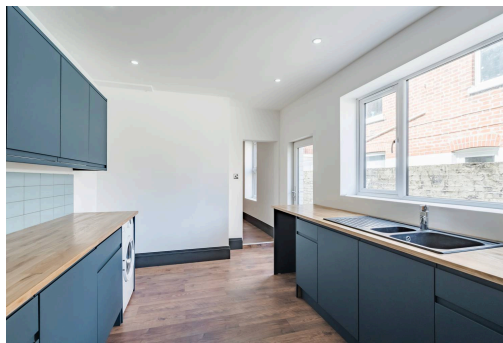
Recently renovated throughout with a fresh and considered finish, this four-bedroom mid-terraced home in Great Yarmouth offers far more than first meets the eye. A rare hallway entrance sets the tone from the moment you arrive — an uncommon feature in traditional terraces that immediately adds a sense of space and structure. Inside, three reception rooms provide flexible living options, including a front sitting room with bay window, a central space with patio doors ideal for a home office or playroom, and a separate dining room linked to the stylish new kitchen. Upstairs, four bright bedrooms and a well-finished bathroom with both bath and separate shower cater perfectly to everyday family life. Outside, the garden has been fully paved for easy upkeep, while on-street parking completes the picture of a home that's been updated with comfort and convenience in mind.

The Location

Great Yarmouth is a coastal town located in Norfolk, England, on the eastern edge of the country, along the North Sea. Known for its sandy beaches and rich maritime history, the town has been a popular seaside resort since the 18th century. Situated



Recently renovated throughout with a fresh and considered finish, this four-bedroom mid-terraced home in Great Yarmouth offers far more than first meets the eye. A rare hallway entrance sets the tone from the moment you arrive — an uncommon feature in traditional terraces that immediately adds a sense of space and structure. Inside, three reception rooms provide flexible living options, including a front sitting room with bay window, a central space with patio doors ideal for a home office or playroom, and a separate dining room linked to the stylish new kitchen. Upstairs, four bright bedrooms and a well-finished



Recently renovated throughout with a fresh and considered finish, this four-bedroom mid-terraced home in Great Yarmouth offers far more than first meets the eye. A rare hallway entrance sets the tone from the moment you arrive — an uncommon feature in traditional terraces that immediately adds a sense of space and structure. Inside, three reception rooms provide flexible living options, including a front sitting room with bay window, a central space with patio doors ideal for a home office or playroom, and a separate dining room linked to the stylish new kitchen. Upstairs, four bright bedrooms and a well-finished bathroom with both bath and separate shower cater perfectly to everyday family life. Outside, the garden has been fully paved for easy upkeep, while on-street parking completes the picture of a home that's been updated with comfort and convenience in mind.

The Location

Great Yarmouth is a coastal town located in Norfolk, England, on the eastern edge of the country, along the North Sea. Known for its sandy beaches and rich maritime history, the town has been a popular seaside resort since the 18th century. Situated about 20 miles east of Norwich, Great Yarmouth is home to a bustling seafront with traditional amusements, piers, and holiday attractions.

The River Yare runs through the town, giving it a natural harbour that has historically been important for fishing and trade. Today, the town blends its historic charm with modern tourism, offering visitors a mix of cultural sites, including museums and the medieval town walls, as well as lively entertainment along the Golden Mile.

Palgrave Road, Great Yarmouth

This four-bedroom mid-terraced home in Great Yarmouth breaks the mould with a rare hallway entrance, a standout feature in a street where most step directly into the living space. Renovated from top to bottom with great care, it still holds onto those all-important period details that give it character and charm.

The front sitting room is instantly impressive, framed by a generous bay window and anchored by a beautiful original fireplace that sets the tone for the rest of the house.

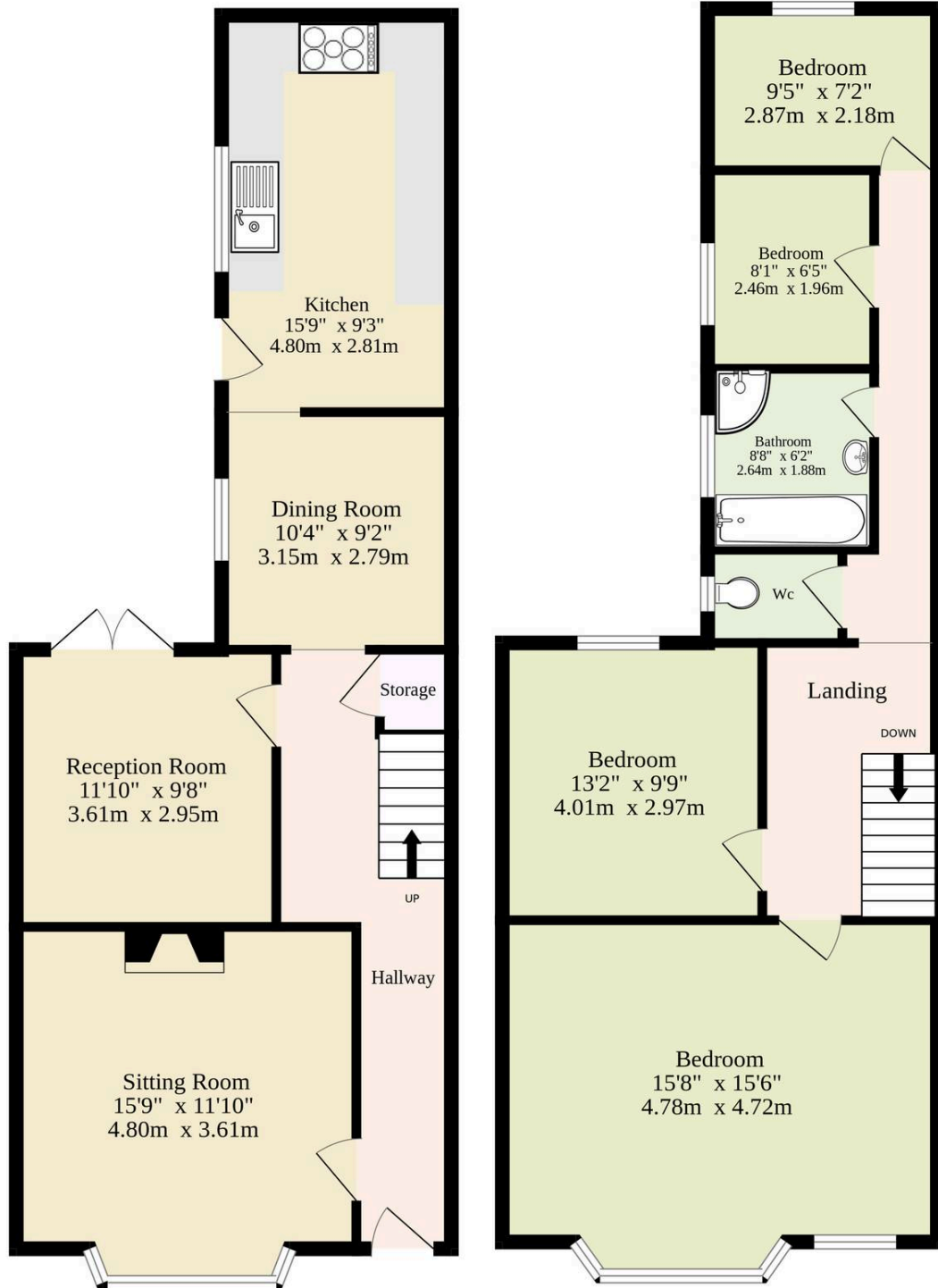
Beyond this, the layout continues to surprise, offering two more reception areas. The second space, complete with patio doors, makes a brilliant home office or playroom — flexible and functional to suit a changing lifestyle.

At the rear, the dining room links directly with the kitchen, making everyday mealtimes and entertaining guests feel effortless. The kitchen itself is brand new, designed in a tasteful palette with wood-effect countertops, tiled splashback and space for all necessary appliances. There's also rear access through a singular door, adding to the practical flow of the home.



Ground Floor
640 sq.ft. (59.5 sq.m.) approx.

1st Floor
689 sq.ft. (64.0 sq.m.) approx.



TOTAL FLOOR AREA : 1329 sq.ft. (123.5 sq.m.) approx.

Whilst every attempt has been made to ensure the accuracy of the floorplan contained here, measurements of doors, windows, rooms and any other items are approximate and no responsibility is taken for any error, omission or mis-statement. This plan is for illustrative purposes only and should be used as such by any prospective purchaser. The services, systems and appliances shown have not been tested and no guarantee as to their operability or efficiency can be given.
Made with Metropix ©2025

You can include any text here. The text can be modified upon generating your brochure.

You can include any text here. The text can be modified upon generating your brochure.

