



15 Springfield North, Hemsby
£300,000

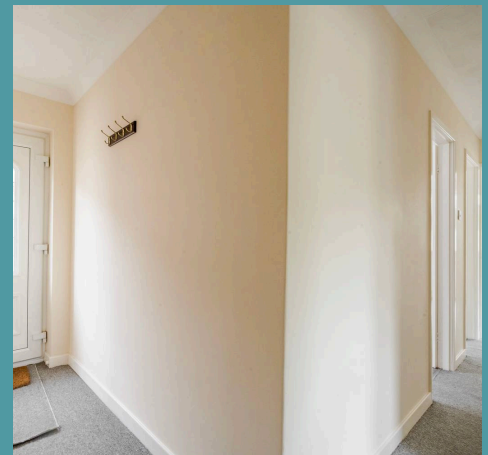
15 Springfield North

Hemsby, Great Yarmouth

Proudly positioned in the coastal village of Hemsby, lies this charming detached bungalow with a chain-free status, that presents the perfect option for those looking to downsize or if you require a single-floor layout. Showcasing a spacious sitting room, a kitchen, three bedrooms and a bathroom. Externally, you will find a large well-maintained garden, a driveway providing off-road parking and a garage for storage options. Acquire this home today and make it your own!

Location

Hemsby is a coastal village located in Norfolk, just a few miles north of Great Yarmouth. Nestled along the scenic East Norfolk coast, Hemsby is known for its sandy beaches, traditional seaside attractions, and relaxed holiday atmosphere. The village offers a blend of natural beauty and family-friendly entertainment, making it a popular destination for both locals and tourists. Its proximity to the Norfolk Broads also makes it an ideal base for exploring the region's unique waterways and countryside.





15 Springfield North

Hemsby, Great Yarmouth

Upon entering, you are greeted by a well-designed floor plan that seamlessly flows throughout. The heart of the home lies in the kitchen, a blank canvas awaiting your personal touch, to be able to cook your most favourite home cooked meals. Currently fitted with units, there is plenty of space for your own appliances and laundry goods. It opens into the spacious sitting room, filled with an abundance of natural light from the front aspect windows, inviting relaxation and entertaining.

The bungalow consists of three bedrooms, each thoughtfully designed to offer relaxation and privacy. The third bedroom has the versatility to be a snug, home office or a guest room, depending on your own preferences and style. Completing the accommodation is a bathroom, comprising of a three piece suite.



Stepping outside, you are greeted by a large, well-maintained garden, offering endless possibilities for outdoor activities and enjoyment. Fully enclosed for privacy and seclusion, this expansive outdoor space is perfect for soaking up the sun, enjoying al-fresco dining, or gardening. Convenience is key with a driveway providing off-road parking and a garage that offers ample storage options for all your belongings, keeping your living space clutter-free and organised.



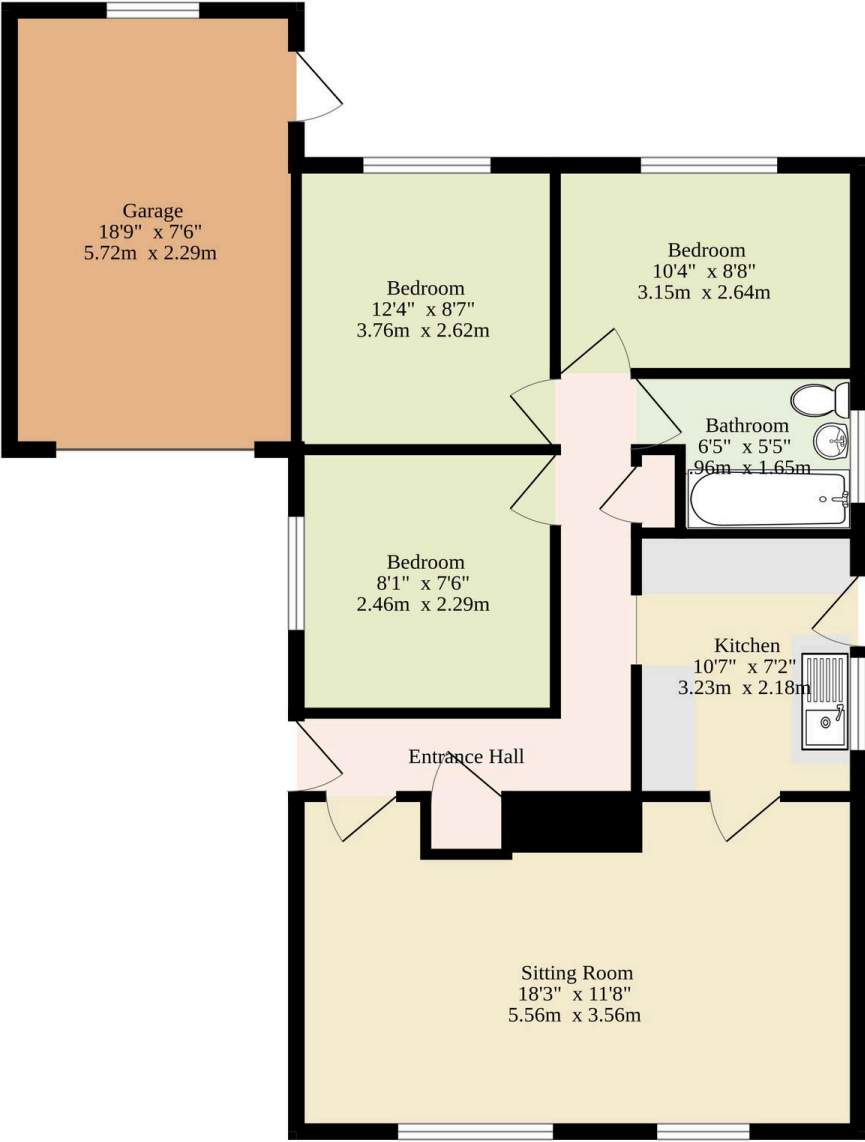
15 Springfield North

Hemsby, Great Yarmouth

- Chain free
- Detached bungalow located at the end of a cul-de-sac in the coastal village of Hemsby
- Suitable option for someone looking to downsize or if you require a single-level layout
- Kitchen that is ready for you to make your own
- Spacious sitting room inviting relaxation and entertaining
- Three bedrooms and a bathroom
- Large well-maintained garden that is fully enclosed for privacy and seclusion
- Driveway providing off-road parking and a garage for storage options
- Close to local shops, schools, healthcare facilities and transport links



Ground Floor
885 sq.ft. (82.2 sq.m.) approx.



Sqft Includes The Garage

TOTAL FLOOR AREA : 885 sq.ft. (82.2 sq.m.) approx.

Whilst every attempt has been made to ensure the accuracy of the floorplan contained here, measurements of doors, windows, rooms and any other items are approximate and no responsibility is taken for any error, omission or mis-statement. This plan is for illustrative purposes only and should be used as such by any prospective purchaser. The services, systems and appliances shown have not been tested and no guarantee as to their operability or efficiency can be given.
Made with Metropix ©2025

