



## 8 Somerton Road, Winterton-On-Sea

£210,000 Freehold

GUIDE PRICE: £210,000-£220,000. With field vistas and dreamy sunsets, this charming three-bedroom home in Winterton-on-Sea offers modern living in a coastal setting. The spacious sitting room, featuring a multi-fuel burner and patio doors, easily connects to the outdoor space, where you can soak in the stunning views. The galley kitchen is both functional and well-appointed, with plenty of storage throughout the home to keep things organised. Upstairs, three generously sized bedrooms await, including a master with a walk-in wardrobe and potential to add an en-suite. With ample parking options and a welcoming community, this property offers the perfect blend of modern living and rural charm.

Council Tax band: A

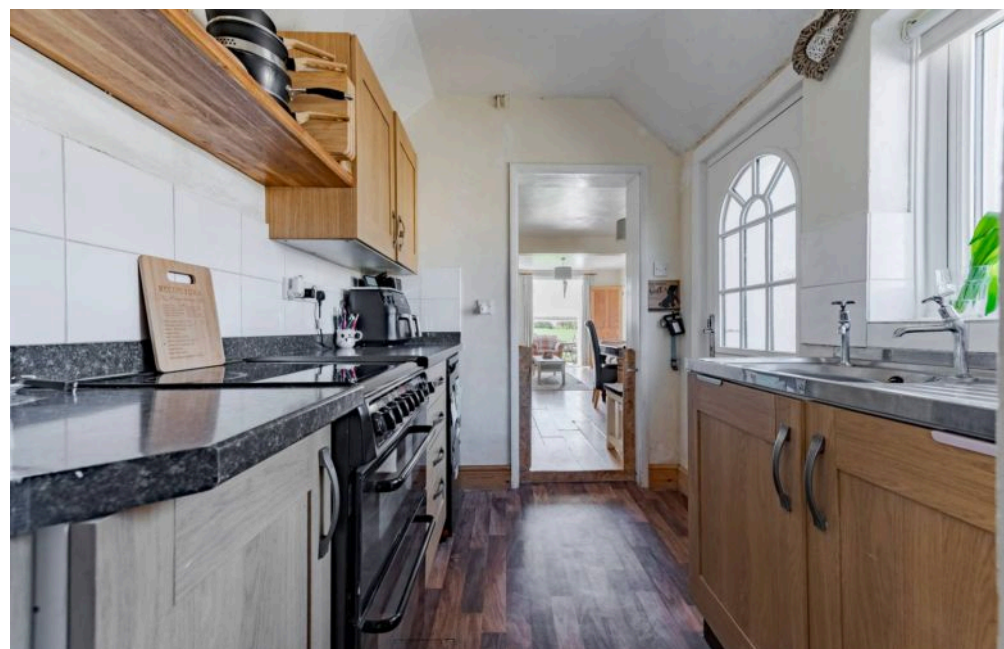
Tenure: Freehold



GUIDE PRICE: £210,000-£220,000. With field vistas and dreamy sunsets, this charming three-bedroom home in Winterton-on-Sea offers modern living in a coastal setting. The spacious sitting room, featuring a multi-fuel burner and patio doors, easily connects to the outdoor space, where you can soak in the stunning views. The galley kitchen is both functional and well-appointed, with plenty of storage throughout the home to keep things organised. Upstairs, three generously sized bedrooms await, including a master with a walk-in wardrobe and potential to add an en-suite. With ample parking options and a welcoming community, this property offers the perfect blend of modern living and rural charm.

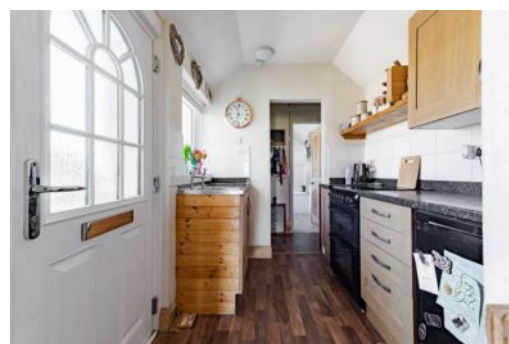
### The Location

Winterton-on-Sea is a coastal village located in Norfolk, England, on the North Sea coast. Situated about 10 miles northeast of Great Yarmouth, Winterton-on-Sea lies within the East Norfolk district. It is known for its long sandy beach, part of the Norfolk Coast Area of Outstanding Natural Beauty. The village has a rich history, with evidence of settlement dating back to medieval times.



GUIDE PRICE: £210,000-£220,000.

With field vistas and dreamy sunsets, this charming three-bedroom home in Winterton-on-Sea offers modern living in a coastal setting. The spacious sitting room, featuring a multi-fuel burner and patio doors, easily connects to the outdoor space, where you can soak in the stunning views. The galley kitchen is both functional and well-appointed, with plenty of storage throughout the home to keep things organised. Upstairs, three generously sized bedrooms await, including a master with a walk-in wardrobe and potential to add an en-suite. With ample parking options and a



**GUIDE PRICE: £210,000-£220,000.** With field vistas and dreamy sunsets, this charming three-bedroom home in Winterton-on-Sea offers modern living in a coastal setting. The spacious sitting room, featuring a multi-fuel burner and patio doors, easily connects to the outdoor space, where you can soak in the stunning views. The galley kitchen is both functional and well-appointed, with plenty of storage throughout the home to keep things organised. Upstairs, three generously sized bedrooms await, including a master with a walk-in wardrobe and potential to add an en-suite. With ample parking options and a welcoming community, this property offers the perfect blend of modern living and rural charm.

### **The Location**

Winterton-on-Sea is a coastal village located in Norfolk, England, on the North Sea coast. Situated about 10 miles northeast of Great Yarmouth, Winterton-on-Sea lies within the East Norfolk district. It is known for its long sandy beach, part of the Norfolk Coast Area of Outstanding Natural Beauty. The village has a rich history, with evidence of settlement dating back to medieval times.

It is a popular destination for tourists, particularly those interested in birdwatching, as the nearby Winterton Dunes are home to a wide variety of wildlife. The village also features a local primary school, a few pubs, and various small shops, serving both residents and visitors. Winterton-on-Sea enjoys a tranquil, rural atmosphere while being close enough to larger towns for convenient access to amenities.

### **Somerton Road**

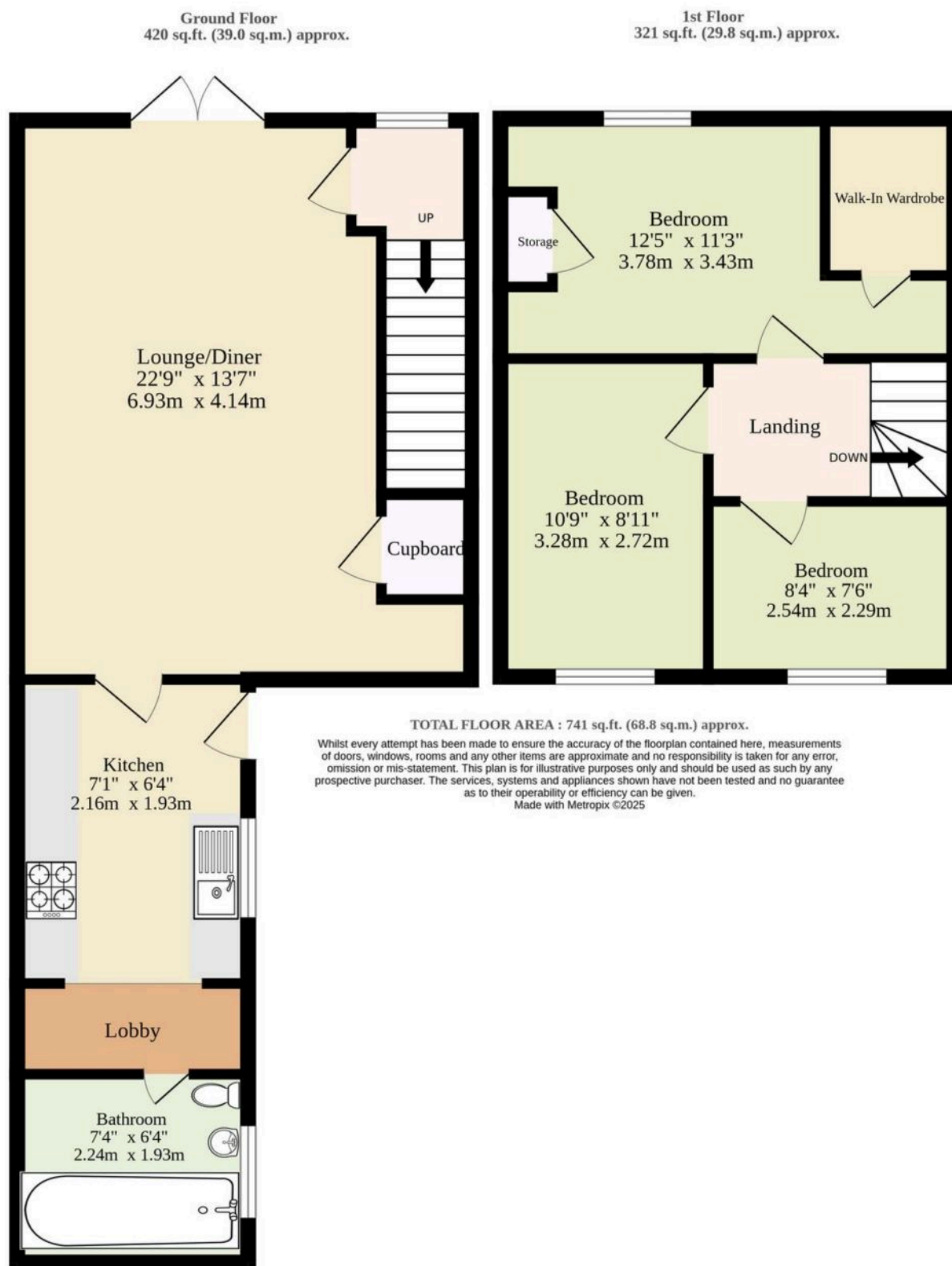
Step inside to find a spacious sitting room, designed for relaxation and warmth. The multi-fuel burner creates an inviting atmosphere, perfect for cosy evenings in, while the large patio doors provide seamless access to the outdoors, where you can enjoy expansive views of the fields.

As the day draws to a close, you can take in stunning sunsets over the horizon, making this spot the ideal place to unwind after a busy day.

The kitchen, arranged in a practical galley layout, is designed with efficiency in mind, offering plenty of storage and countertop space for all your cooking needs. Additional storage throughout the home ensures that clutter is kept to a minimum, making it easy to maintain a neat and organised living space. The property also features a convenient lobby and a well-appointed ground-floor bathroom with a three-piece suite, ensuring all your needs are catered to on the main level.







You can include any text here. The text can be modified upon generating your brochure.

You can include any text here. The text can be modified upon generating your brochure.

