

41 Westwood Drive, Norwich - NR6 5DE

£400,000 Freehold

This transformed bungalow offers spacious proportions, notably more spacious than other homes in the area. A signature trait is the clever seating bench with a blue panelled backdrop near the kitchen, paired with coat hooks above, providing a practical and stylish solution for daily routines. The large, private garden offers ample space for outdoor activities, ideal for families or anyone who enjoys privacy and room to move. A detached garage provides additional storage or workshop space, while the extensive off-road parking ensures room for multiple vehicles. With modern updates and a functional layout, this property is perfect for those seeking a well-designed, spacious home.

Council Tax band: C

Tenure: Freehold

EPC Energy Efficiency Rating: D

EPC Environmental Impact Rating: E

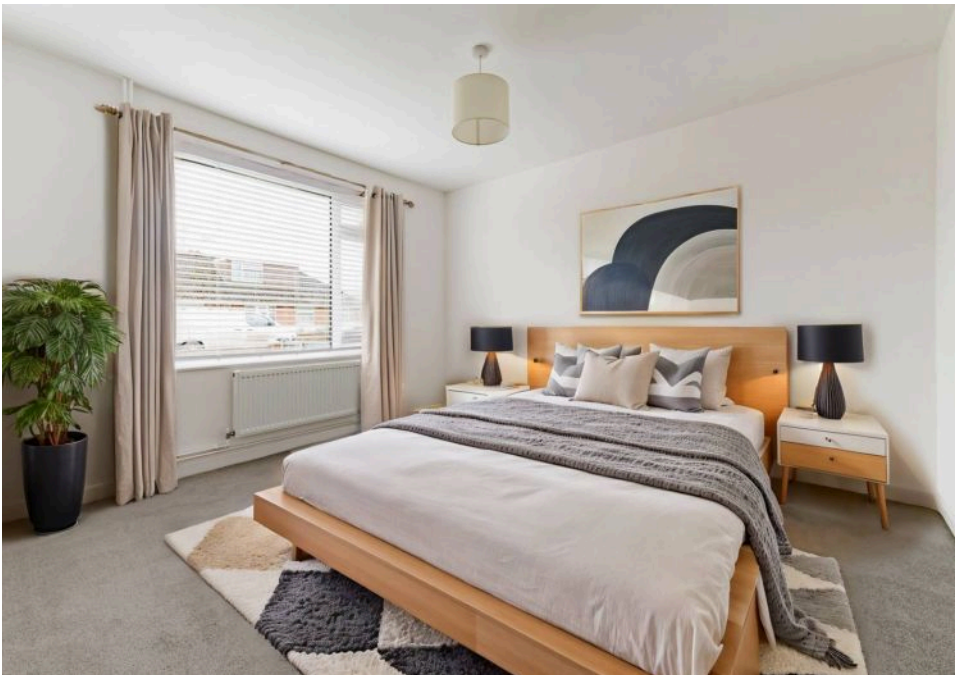
This transformed bungalow offers spacious proportions, notably more spacious than other homes in the area. A signature trait is the clever seating bench with a blue panelled backdrop near the kitchen, paired with coat hooks above, providing a practical and stylish solution for daily routines. The large, private garden offers ample space for outdoor activities, ideal for families or anyone who enjoys privacy and room to move. A detached garage provides additional storage or workshop space, while the extensive off-road parking ensures room for multiple vehicles. With modern updates and a functional layout, this property is perfect for those seeking a well-designed, spacious home.

The Location

Located in the heart of Hellesdon, Westwood Drive offers a prime, well-connected setting. Residents benefit from the convenience of everyday essentials, with ASDA just a short walk away, and bus routes offering direct access to the city for effortless travel. The nearby Sweetbriar Industrial Estate provides additional amenities and services, enhancing the overall convenience of the area. Families will find excellent



This transformed bungalow offers spacious proportions, notably more spacious than other homes in the area. A signature trait is the clever seating bench with a blue panelled backdrop near the kitchen, paired with coat hooks above, providing a practical and stylish solution for daily routines. The large, private garden offers ample space for outdoor activities, ideal for families or anyone who enjoys privacy and room to move. A detached garage provides additional storage or workshop space, while the extensive off-road parking ensures room for multiple vehicles. With modern updates and a functional layout, this



This transformed bungalow offers spacious proportions, notably more spacious than other homes in the area. A signature trait is the clever seating bench with a blue panelled backdrop near the kitchen, paired with coat hooks above, providing a practical and stylish solution for daily routines. The large, private garden offers ample space for outdoor activities, ideal for families or anyone who enjoys privacy and room to move. A detached garage provides additional storage or workshop space, while the extensive off-road parking ensures room for multiple vehicles. With modern updates and a functional layout, this property is perfect for those seeking a well-designed, spacious home.

The Location

Located in the heart of Hellesdon, Westwood Drive offers a prime, well-connected setting. Residents benefit from the convenience of everyday essentials, with ASDA just a short walk away, and bus routes offering direct access to the city for effortless travel. The nearby Sweetbriar Industrial Estate provides additional amenities and services, enhancing the overall convenience of the area. Families will find excellent educational options close by, including Hellesdon High School, ensuring a top-quality learning environment. With easy access to the Northern Distributor Road (NDR), Westwood Drive combines outstanding connectivity with a wide range of local amenities, making it a highly desirable location.

Westwood Drive

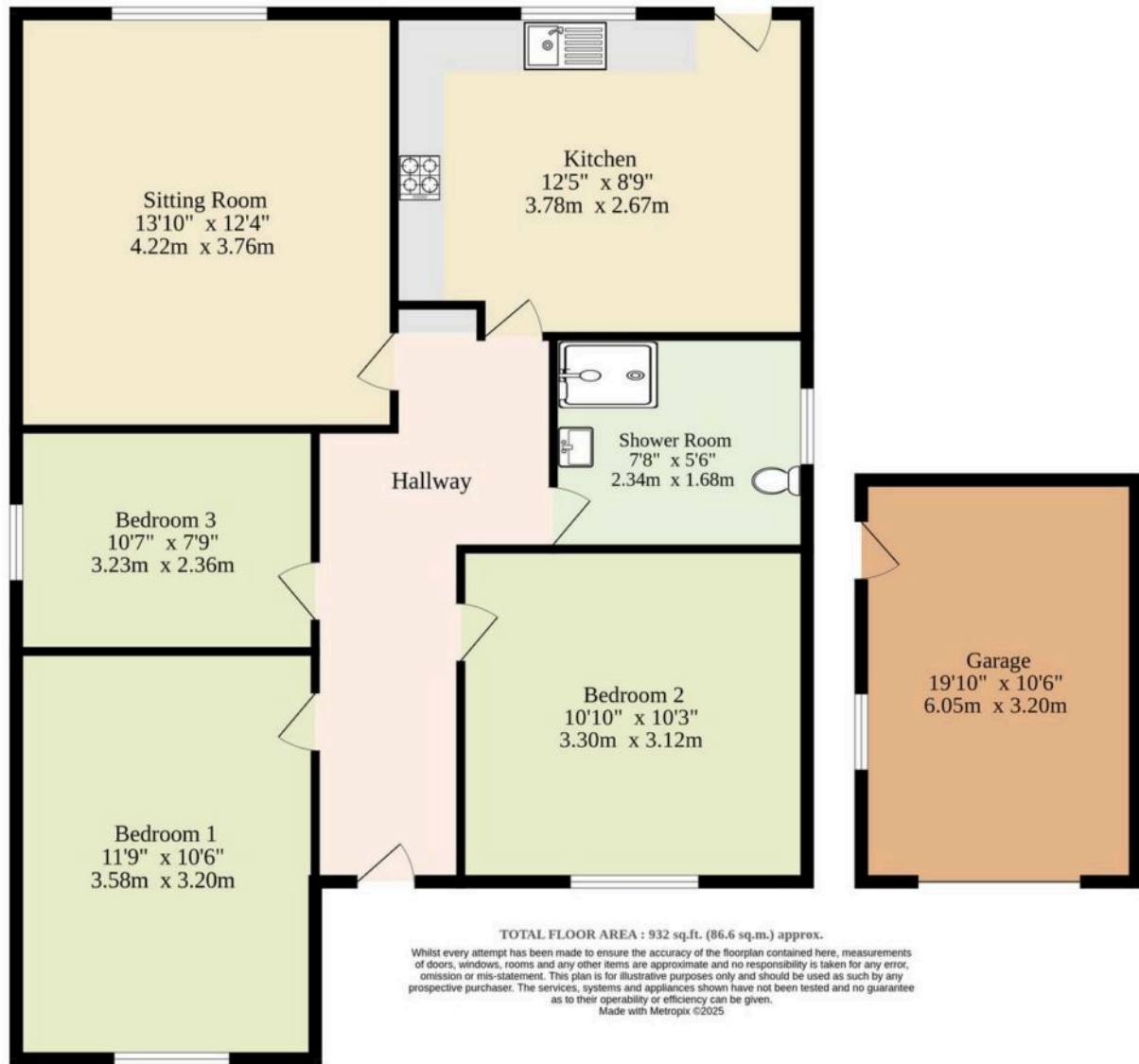
This fully renovated bungalow offers modern living with ultimate peace of mind, featuring brand-new electrics, an upgraded boiler heating system and updated fixtures throughout. Located in a highly desirable area, this property stands out for its generous proportions, offering significantly more space than typical bungalows in the region. It's perfect for those seeking a well-rounded combination of aesthetics and practicality.

Step inside to discover a large, plush carpeted lounge with ample space for your corner sofa set and TV setup – ideal for cosying up during chilled weekday evenings. The modern kitchen is a bright, welcoming space, complete with sleek wooden surfaces and plenty of room for your appliances. Classy wooden doors and monochrome fixtures throughout the property add a touch of elegance, creating a cohesive look.

The well-thought-out design continues just outside the kitchen, where a small bench against a rich blue panelled backdrop serves as a convenient area for slipping on your shoes. Above, hooks provide an easy place to hang coats – a clever feature designed to make your daily routine just a bit more enjoyable. With three large bedrooms, this home accommodates families, couples, or anyone in need of extra space, providing flexibility for a variety of needs.



Ground Floor
932 sq.ft. (86.6 sq.m.) approx.



You can include any text here. The text can be modified upon generating your brochure.

You can include any text here. The text can be modified upon generating your brochure.

