



Common View Bury Road, Wortham

£220,000 Freehold

With the rolling Waveney Valley beyond, this charming semi-detached cottage offers a perfect fusion of period character and modern living. Dating back to 1800, the property features stunning original elements such as exposed beams and a captivating inglenook fireplace with a cast iron stove. The kitchen and bathroom provide modern amenities while maintaining the home's traditional appeal. Outside, the generous garden and extensive lawn create an ideal space for relaxation and entertaining, with a large garage/workshop offering flexibility for various uses. The peaceful setting, combined with the convenience of practical outbuildings and a paved pathway leading to a private garden retreat, makes this property an exceptional opportunity.

With the rolling Waveney Valley beyond, this charming semi-detached cottage offers a perfect fusion of period character and modern living. Dating back to 1800, the property features stunning original elements such as exposed beams and a captivating inglenook fireplace with a cast iron stove. The kitchen and bathroom provide modern amenities while maintaining the home's traditional appeal. Outside, the generous garden and extensive lawn create an ideal space for relaxation and entertaining, with a large garage/workshop offering flexibility for various uses. The peaceful setting, combined with the convenience of practical outbuildings and a paved pathway leading to a private garden retreat, makes this property an exceptional opportunity.

The Location

Placed within the picturesque village of Wortham, this property offers a unique blend of serene rural living and convenient access to local amenities. The village, known for its rich history and an array of charming period homes, is centered around a vibrant village green. Wortham provides a tight-



With the rolling Waveney Valley beyond, this charming semi-detached cottage offers a perfect fusion of period character and modern living. Dating back to 1800, the property features stunning original elements such as exposed beams and a captivating inglenook fireplace with a cast iron stove. The kitchen and bathroom provide modern amenities while maintaining the home's traditional appeal. Outside, the generous garden and extensive lawn create an ideal space for relaxation and entertaining, with a large garage/workshop offering flexibility



With the rolling Waveney Valley beyond, this charming semi-detached cottage offers a perfect fusion of period character and modern living. Dating back to 1800, the property features stunning original elements such as exposed beams and a captivating inglenook fireplace with a cast iron stove. The kitchen and bathroom provide modern amenities while maintaining the home's traditional appeal. Outside, the generous garden and extensive lawn create an ideal space for relaxation and entertaining, with a large garage/workshop offering flexibility for various uses. The peaceful setting, combined with the convenience of practical outbuildings and a paved pathway leading to a private garden retreat, makes this property an exceptional opportunity.

The Location

Placed within the picturesque village of Wortham, this property offers a unique blend of serene rural living and convenient access to local amenities. The village, known for its rich history and an array of charming period homes, is centered around a vibrant village green. Wortham provides a tight-knit community atmosphere, complete with essential amenities like a well-stocked village shop, a welcoming tea room and a local school.

The village hall, featuring sports facilities, ensures that residents can stay active and engaged in community events. For those seeking a broader range of shopping, dining, and cultural options, the historic market town of Diss is just a short drive away. Set within the scenic Waveney Valley, Diss is a bustling hub offering various services, including a mainline railway station that connects directly to London Liverpool Street and Norwich, making it ideal for commuters.

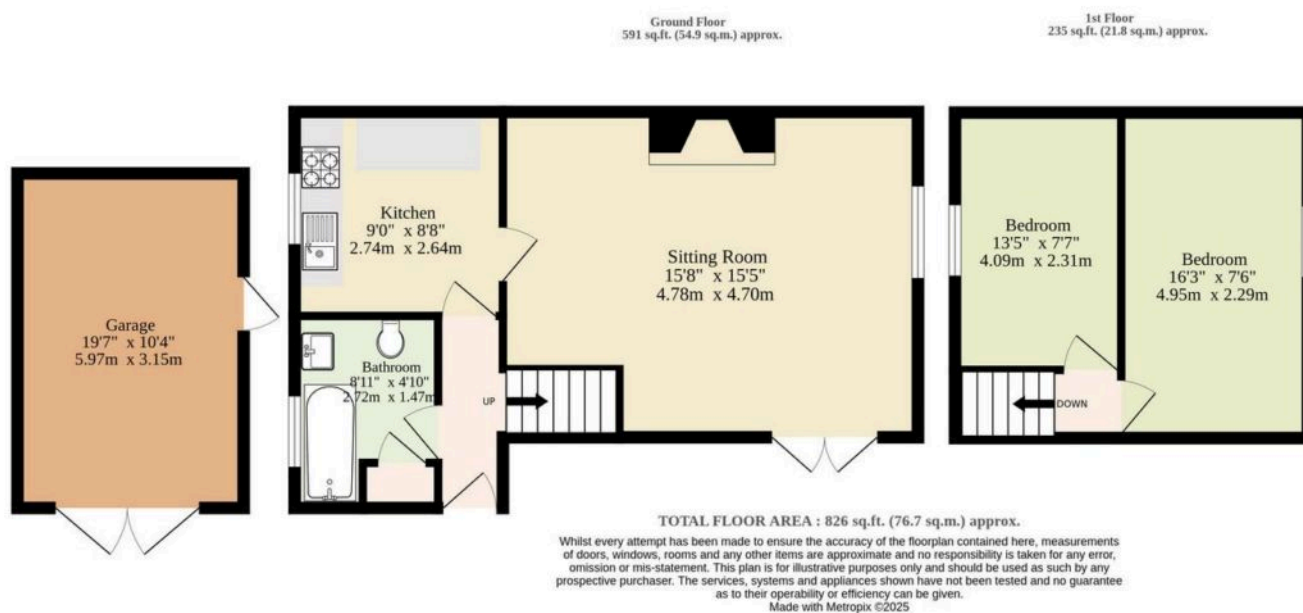
Common View, Bury Road

This charming semi-detached cottage, believed to date back to 1800, seamlessly blends period character with modern comforts. From the moment you step inside, the warmth of history is evident in the exposed beams and stunning inglenook fireplace with an inset cast iron stove, which serves as the centrepiece of the spacious reception room.

The kitchen and bathroom provide contemporary convenience without compromising the home's traditional appeal. Upstairs, the main bedroom enjoys breathtaking views across the beautifully kept gardens and the rolling Waveney Valley beyond.

The exterior of the property offers just as much charm and practicality as the interior. A large shingled driveway provides ample off-road parking, while a hardstanding area leads to the substantial timber-clad garage/workshop, measuring 19'7"





You can include any text here. The text can be modified upon generating your brochure.