

97 Vanguard Chase, Norwich

£190,000 Leasehold

Guide Price £190,000 - £200,000. This modern first-floor apartment offers contemporary living in a prime location, just a short distance from the UEA and N&N Hospital.

Guide Price £190,000 - £200,000. This modern first-floor apartment offers contemporary living in a prime location, just a short distance from the UEA and N&N Hospital. The spacious, open-plan kitchen, dining, and living area creates an inviting space for both relaxation and entertaining. Two well-sized double bedrooms, including a master with en suite, offer comfort and practicality, while a stylish new bathroom adds to the home's appeal. With allocated parking, communal gardens, and easy upkeep, this apartment is perfect for busy professionals or those seeking a low-maintenance lifestyle. Its proximity to key amenities ensures convenience for work, leisure, and everything in between.

The Location

Set in Vanguard Chase, this property enjoys an ideal tucked-away location that provides the perfect balance between quiet village and convenience. With essential amenities right at your doorstep, including the Longwater Retail Park housing popular retailers like Sainsbury's and M&S, your daily shopping



Guide Price £190,000 - £200,000. This modern first-floor apartment offers contemporary living in a prime location, just a short distance from the UEA and N&N Hospital. The spacious, open-plan kitchen, dining, and living area creates an inviting space for both relaxation and entertaining. Two well-sized double bedrooms, including a master with en suite, offer comfort and practicality, while a stylish new bathroom adds to the home's appeal. With allocated parking, communal gardens, and easy upkeep, this apartment is perfect for busy professionals or those seeking



Guide Price £190,000 - £200,000. This modern first-floor apartment offers contemporary living in a prime location, just a short distance from the UEA and N&N Hospital. The spacious, open-plan kitchen, dining, and living area creates an inviting space for both relaxation and entertaining. Two well-sized double bedrooms, including a master with en suite, offer comfort and practicality, while a stylish new bathroom adds to the home's appeal. With allocated parking, communal gardens, and easy upkeep, this apartment is perfect for busy professionals or those seeking a low-maintenance lifestyle. Its proximity to key amenities ensures convenience for work, leisure, and everything in between.

The Location

Set in Vanguard Chase, this property enjoys an ideal tucked-away location that provides the perfect balance between quiet village and convenience. With essential amenities right at your doorstep, including the Longwater Retail Park housing popular retailers like Sainsbury's and M&S, your daily shopping needs are effortlessly met.

For those who require an easy commute, the property is within a 5 minute walk of a frequent bus route into the city centre alongside the A47 offering seamless access, making it a prime choice for busy professionals. Furthermore, the proximity to Norwich City provides access to a myriad of additional amenities, from dining options to cultural attractions. Families will appreciate the abundance of schools for all ages in the area, making it a superb choice for those with children, ensuring they receive the best education options within reach.

Vanguard Chase

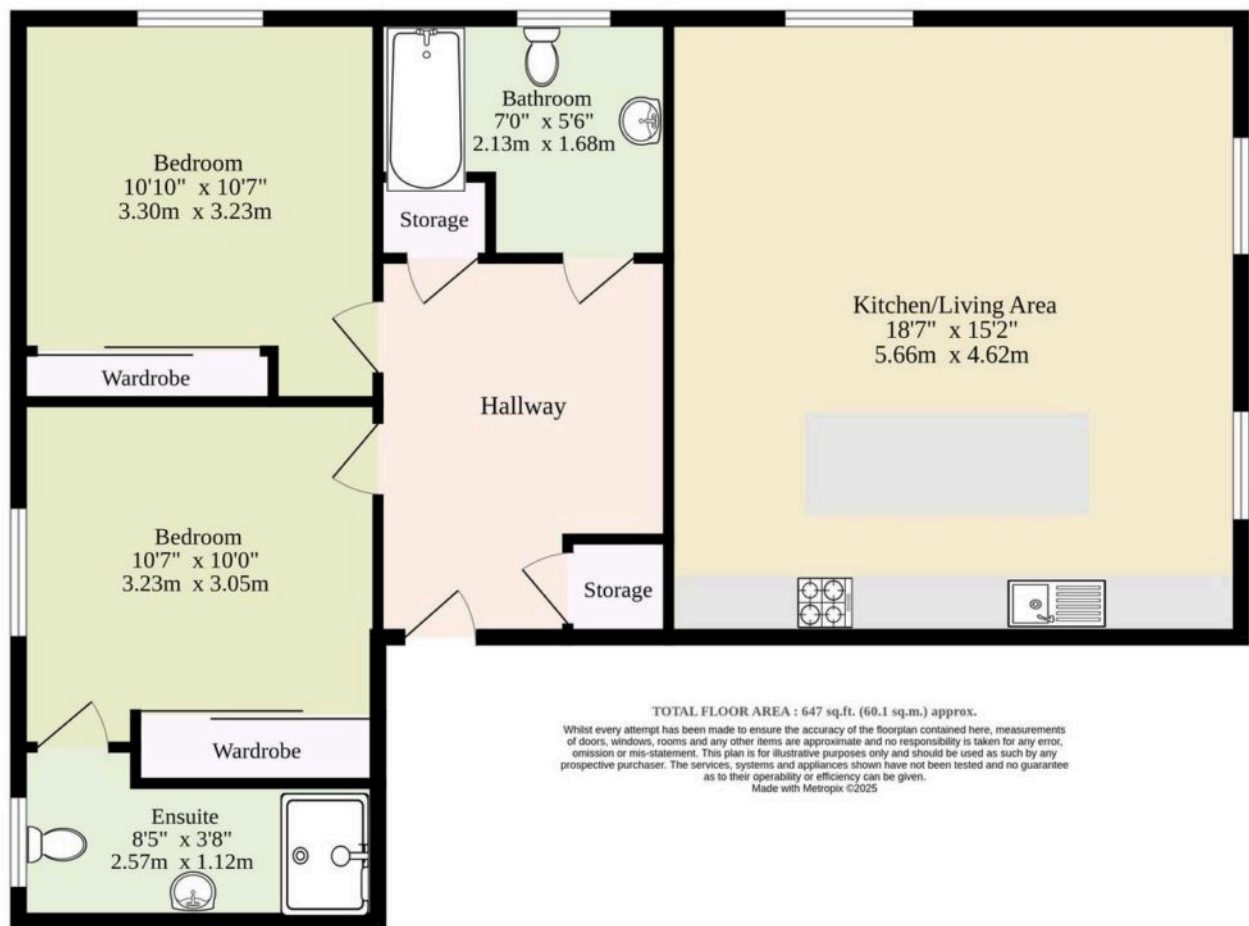
This contemporary, first-floor apartment is a prime example of stylish living in a highly desirable area. Set at the edge of the Hampdens development, this home offers a perfect balance of privacy and accessibility, with views of the surrounding countryside that make for a peaceful backdrop.

Designed and built by Hopkins, the property boasts a spacious, light-filled open-plan kitchen, dining, and living area that forms the heart of the home. It's ideal for both entertaining and everyday family life, with ample room for dining and lounging. The sleek, modern kitchen is equipped with integrated appliances and a central island, perfect for cooking or casual socialising.

The apartment features two generously-sized double bedrooms, both offering plenty of storage and natural light. The master bedroom benefits from an en suite shower room, adding a layer of convenience and privacy. A stylish new family



647 sq.ft. (60.1 sq.m.) approx.



You can include any text here. The text can be modified upon generating your brochure.

You can include any text here. The text can be modified upon generating your brochure.

