

17 Needham Place St. Stephens Square, Norwich

£180,000 Leasehold

Located in the very heart of the city, this superbly finished one-bedroom apartment offers contemporary city-centre living with standout style. It features a newly installed Shaker-style kitchen with integrated appliances, a sleek shower room, and premium John Lewis-fitted wardrobes. Enjoy beautiful wooden flooring throughout, a brand-new boiler, and a bright layout with balcony access from both the bedroom and sitting room. The generous balcony delivers sweeping city views, perfect for morning coffee or evening wind-downs. Added benefits include lift access, digital security entry, communal rooftop gardens and a private, secure store room—this is a fully turn-key home in an unbeatable location.

Located in the very heart of the city, this superbly finished one-bedroom apartment offers contemporary city-centre living with standout style. It features a newly installed Shaker-style kitchen with integrated appliances, a sleek shower room, and premium John Lewis-fitted wardrobes. Enjoy beautiful wooden flooring throughout, a brand-new boiler, and a bright layout with balcony access from both the bedroom and sitting room. The generous balcony delivers sweeping city views, perfect for morning coffee or evening wind-downs. Added benefits include lift access, digital security entry, communal rooftop gardens and a private, secure store room—this is a fully turn-key home in an unbeatable location.

The Location

Set within the heart of Norwich, Needham Place at St. Stephens Square offers a prime city living experience. Situated in the vibrant NR1 postcode, this address provides convenient access to the city's bustling amenities and cultural attractions. The surrounding area boasts historic charm, with



Located in the very heart of the city, this superbly finished one-bedroom apartment offers contemporary city-centre living with standout style. It features a newly installed Shaker-style kitchen with integrated appliances, a sleek shower room, and premium John Lewis-fitted wardrobes. Enjoy beautiful wooden flooring throughout, a brand-new boiler, and a bright layout with balcony access from both the bedroom and sitting room. The generous balcony delivers sweeping city views, perfect for morning coffee or evening wind-downs. Added benefits include lift access



Located in the very heart of the city, this superbly finished one-bedroom apartment offers contemporary city-centre living with standout style. It features a newly installed Shaker-style kitchen with integrated appliances, a sleek shower room, and premium John Lewis-fitted wardrobes. Enjoy beautiful wooden flooring throughout, a brand-new boiler, and a bright layout with balcony access from both the bedroom and sitting room. The generous balcony delivers sweeping city views, perfect for morning coffee or evening wind-downs. Added benefits include lift access, digital security entry, communal rooftop gardens and a private, secure store room—this is a fully turn-key home in an unbeatable location.

The Location

Set within the heart of Norwich, Needham Place at St. Stephens Square offers a prime city living experience. Situated in the vibrant NR1 postcode, this address provides convenient access to the city's bustling amenities and cultural attractions. The surrounding area boasts historic charm, with picturesque squares and architecture lining the streets.

Residents can enjoy a diverse range of shops, restaurants, and entertainment options within walking distance. Whether strolling along the riverside or exploring the nearby parks, living in this central location offers the perfect blend of city living and leisure.

Needham Place St. Stephens Square, Norwich

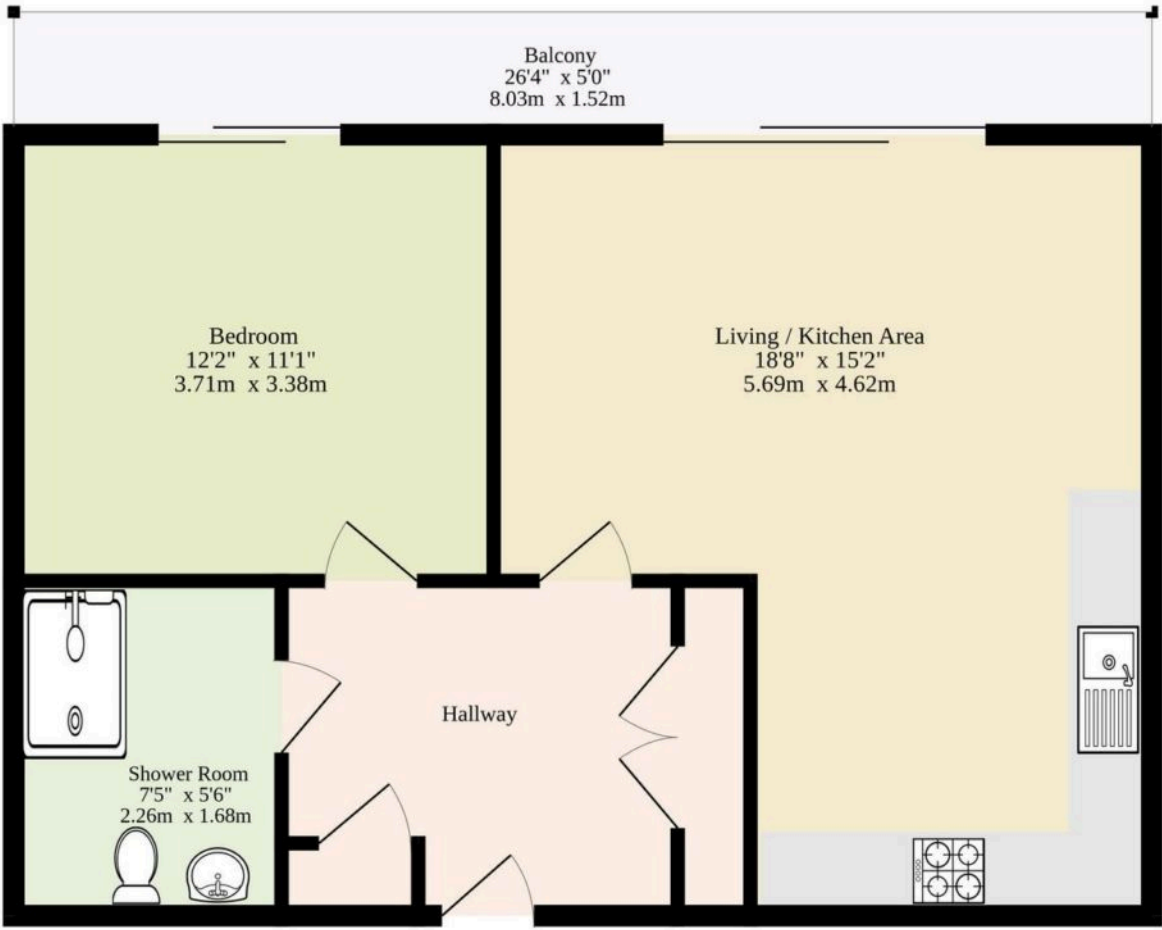
This impeccably presented one-bedroom apartment combines smart design with standout features. From the moment you step inside, the warmth of beautiful, quality wooden floors sets the tone, flowing through a well-maintained layout that's been thoughtfully updated throughout. A sleek, newly installed shower room and John Lewis-fitted wardrobes in the bedroom add a premium touch, perfectly complementing the fresh décor and modern upgrades.

The centrepiece is the newly fitted Shaker-style kitchen, a stylish blend of timeless cabinetry and chrome fixtures, complete with all appliances seamlessly integrated to enhance both function and form. Whether you're cooking for one or entertaining, this space delivers both charm and practicality, with ample storage and a polished finish that speaks of quality.

Step out through sliding doors – from either the living area or bedroom – onto a truly impressive balcony that stretches out with unobstructed views across the city skyline. This is a space that transforms with the hours: coffee at sunrise, a glass of wine as the lights flicker on after dark. It's a standout feature that elevates everyday living and expands your



699 sq.ft. (64.9 sq.m.) approx.



TOTAL FLOOR AREA : 699 sq.ft. (64.9 sq.m.) approx.
Whilst every attempt has been made to ensure the accuracy of the floorplan contained here, measurements of doors, windows, rooms and any other items are approximate and no responsibility is taken for any error, omission or mis-statement. This plan is for illustrative purposes only and should be used as such by any prospective purchaser. The services, systems and appliances shown have not been tested and no guarantee as to their operability or efficiency can be given.
Made with Metropix ©2025

You can include any text here. The text can be modified upon generating your brochure.

You can include any text here. The text can be modified upon generating your brochure.

