

34 Rosebery Road, Norwich

£240,000 Freehold

A classic chain-free terraced home with retained period features, this charming property on Rosebery Road combines traditional design with modern touches throughout. The light-filled sitting room is anchored by a mosaic fireplace, while recessed shelving adds style. The dining room continues the theme, with another feature fireplace and a sunny atmosphere that enhances the home's welcoming feel. The kitchen retains its classic galley style, complete with a range cooker, Belfast sink and gold accents, while the ground-floor shower room boasts contrasting tiling for a contemporary edge. Upstairs, two spacious double bedrooms and a versatile third room provide ample living space, and the private enclosed garden offers a peaceful setting with lawn, mature shrubbery, patio and decked area for relaxation.

A classic chain-free terraced home with retained period features, this charming property on Rosebery Road combines traditional design with modern touches throughout. The light-filled sitting room is anchored by a mosaic fireplace, while recessed shelving adds style. The dining room continues the theme, with another feature fireplace and a sunny atmosphere that enhances the home's welcoming feel. The kitchen retains its classic galley style, complete with a range cooker, Belfast sink and gold accents, while the ground-floor shower room boasts contrasting tiling for a contemporary edge. Upstairs, two spacious double bedrooms and a versatile third room provide ample living space, and the private enclosed garden offers a peaceful setting with lawn, mature shrubbery, patio and decked area for relaxation.

The Location

Positioned along Rosebery Road in Norwich's ever-popular NR3 district, this well-located home places you just 1.5 miles from the heart of the city, making it ideal for those who value both accessibility and community convenience.



A classic chain-free terraced home with retained period features, this charming property on Rosebery Road combines traditional design with modern touches throughout. The light-filled sitting room is anchored by a mosaic fireplace, while recessed shelving adds style. The dining room continues the theme, with another feature fireplace and a sunny atmosphere that enhances the home's welcoming feel. The kitchen retains its classic galley style, complete with a range cooker, Belfast sink and gold accents, while the ground-floor shower room boasts contrasting tiling for a contemporary edge.



A classic chain-free terraced home with retained period features, this charming property on Rosebery Road combines traditional design with modern touches throughout. The light-filled sitting room is anchored by a mosaic fireplace, while recessed shelving adds style. The dining room continues the theme, with another feature fireplace and a sunny atmosphere that enhances the home's welcoming feel. The kitchen retains its classic galley style, complete with a range cooker, Belfast sink and gold accents, while the ground-floor shower room boasts contrasting tiling for a contemporary edge. Upstairs, two spacious double bedrooms and a versatile third room provide ample living space, and the private enclosed garden offers a peaceful setting with lawn, mature shrubbery, patio and decked area for relaxation.

The Location

Positioned along Rosebery Road in Norwich's ever-popular NR3 district, this well-located home places you just 1.5 miles from the heart of the city, making it ideal for those who value both accessibility and community convenience.

Everyday shopping is covered with a Tesco Express within walking distance and an Aldi supermarket only a 5-minute drive away, providing a mix of quick stops and full weekly shops with ease.

Step outside and you're moments away from a fantastic trio of pubs that bring the local area to life. The award-winning Rosebery stands just a few steps from your door, a proud local gem known for its curated food menu and vibrant community feel. A short walk further brings you to The Whalebone, offering a sociable setting with plenty of character, while The Stanley completes the circuit with its warm atmosphere and friendly charm—perfect for relaxed evenings or impromptu meet-ups.

For outdoor lovers and families alike, Waterloo Park is less than half a mile away, offering an open green space with scenic walking routes, play areas and seasonal events that bring the neighbourhood together throughout the year.

Excellent bus links also run through the area, ensuring simple and regular connections into the city centre and beyond, whether for work, leisure or a weekend adventure.

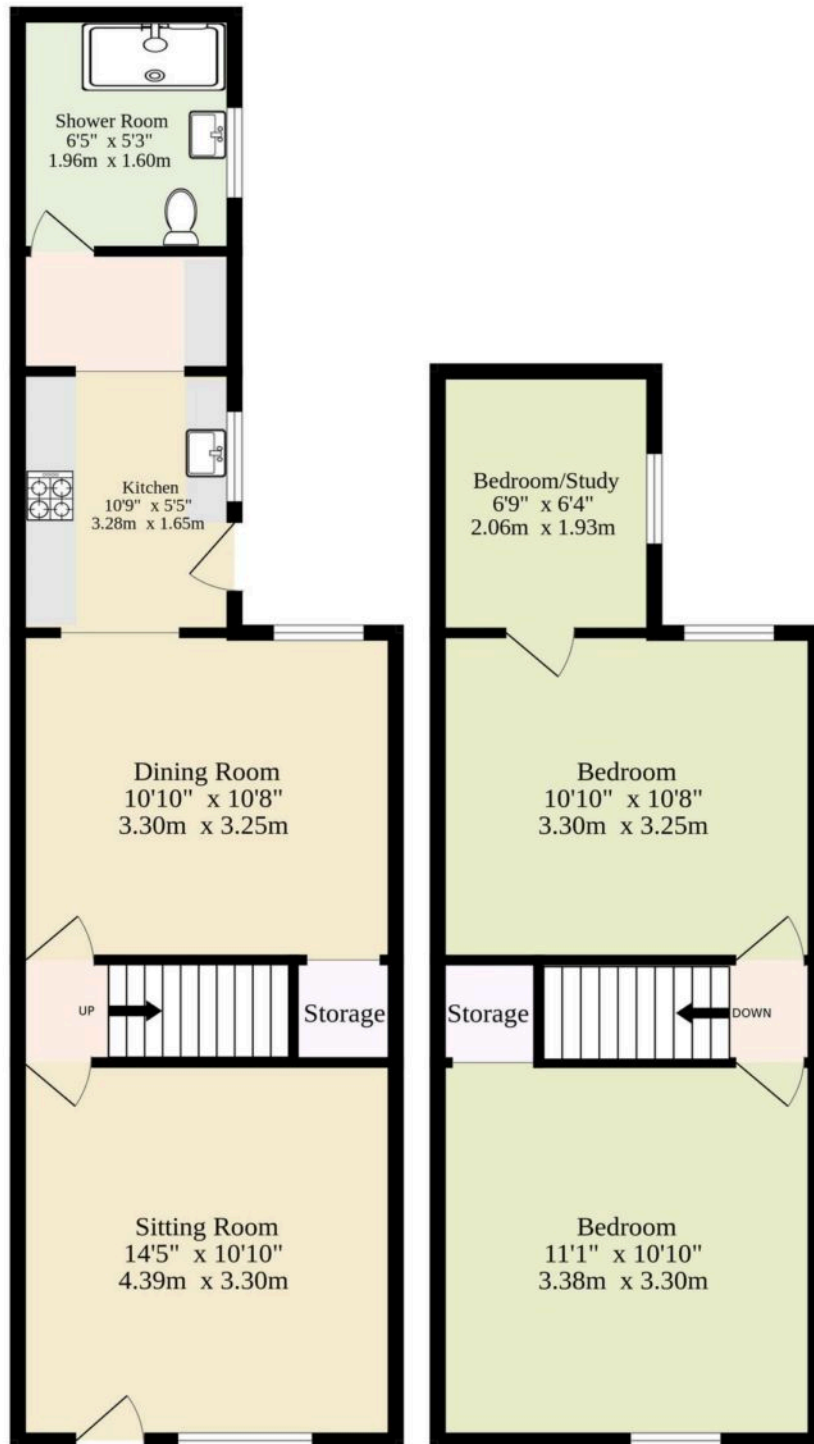
Rosebery Road

Welcome to this charming traditional terrace located on the highly sought-after Rosebery Road, offering a perfect blend of classic design and modern comfort. The home greets you with a beautifully light-filled sitting room, complete with a focal fireplace adorned with a unique mosaic surround.



Ground Floor
362 sq.ft. (33.6 sq.m.) approx.

1st Floor
273 sq.ft. (25.4 sq.m.) approx.



TOTAL FLOOR AREA : 635 sq.ft. (59.0 sq.m.) approx.

Whilst every attempt has been made to ensure the accuracy of the floorplan contained here, measurements of doors, windows, rooms and any other items are approximate and no responsibility is taken for any error, omission or mis-statement. This plan is for illustrative purposes only and should be used as such by any prospective purchaser. The services, systems and appliances shown have not been tested and no guarantee as to their operability or efficiency can be given.

Made with Metropix ©2025

You can include any text here. The text can be modified upon generating your brochure.

You can include any text here. The text can be modified upon generating your brochure.

