



7 Cambridge Road, Lowestoft
£165,000

7 Cambridge Road

Lowestoft

Step into this beautifully presented mid-terrace home in the sought-after town of Lowestoft, an ideal choice for first-time buyers or investors. Boasting two light-filled reception rooms, including one with a cosy wood burner, this property blends comfort and character effortlessly. The well-equipped kitchen, three inviting bedrooms, and a modern family bathroom provide everything you need for contemporary living. Outside, a private, low-maintenance garden with artificial lawn offers a maintained outdoor space, while convenient on-road parking completes the package. A perfect opportunity just moments from the coast.

Location

This home is located on the most easterly point of the British Isles, in the traditional seaside town of Lowestoft. This wonderful seaside destination is steeped in history and offers a delightful blend of coastal allure and urban convenience. With its Blue Flag award-winning sandy beaches, Victorian seafront gardens and two charming piers, residents are treated to strolls along the shore and tranquil moments amidst nature's beauty. There are a number of schools in the area to suit all ages, a range of amenities including a Post Office, Bus Station and Train Station, which both run regular services to Norwich and plenty of shopping facilities and restaurants.





7 Cambridge Road

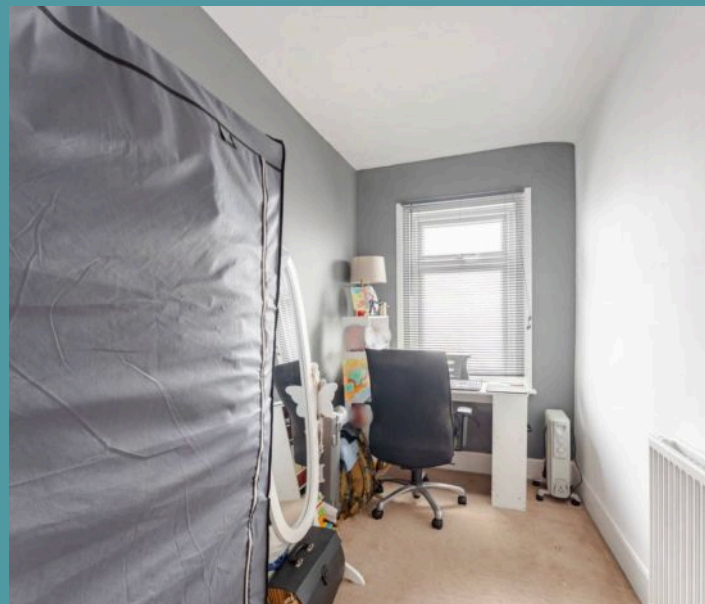
Lowestoft

Step inside to discover two bright and airy reception rooms, ideal for family living or entertaining. The front room is enhanced by a characterful wood burner, creating a warm and inviting ambiance, the perfect space to unwind on cooler evenings.

The kitchen is well-appointed with a range of cabinetry, offering ample storage solutions. It features an integrated double oven, gas hob, and thoughtfully arranged worktops, a functional space for cooking your favourite meals. A lobby creates space for a fridge/freezer. The modern family bathroom is finished to a high standard, complete with a contemporary three-piece suite, including a full-sized bath with shower over, wash basin, and WC.

Upstairs, you'll find three well-proportioned bedrooms, each offering natural light and flexible accommodation options to suit your needs.

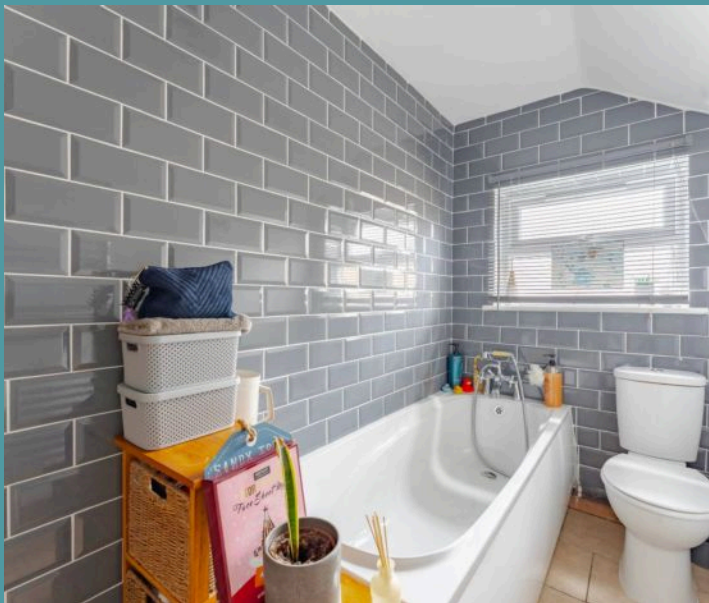
To the rear, enjoy a low-maintenance private garden, an ideal space for outdoor dining or relaxation. Featuring an artificial lawn and room for a small storage shed, it's perfect for those seeking a hassle-free outdoor area. Further benefits include on-road parking.



7 Cambridge Road

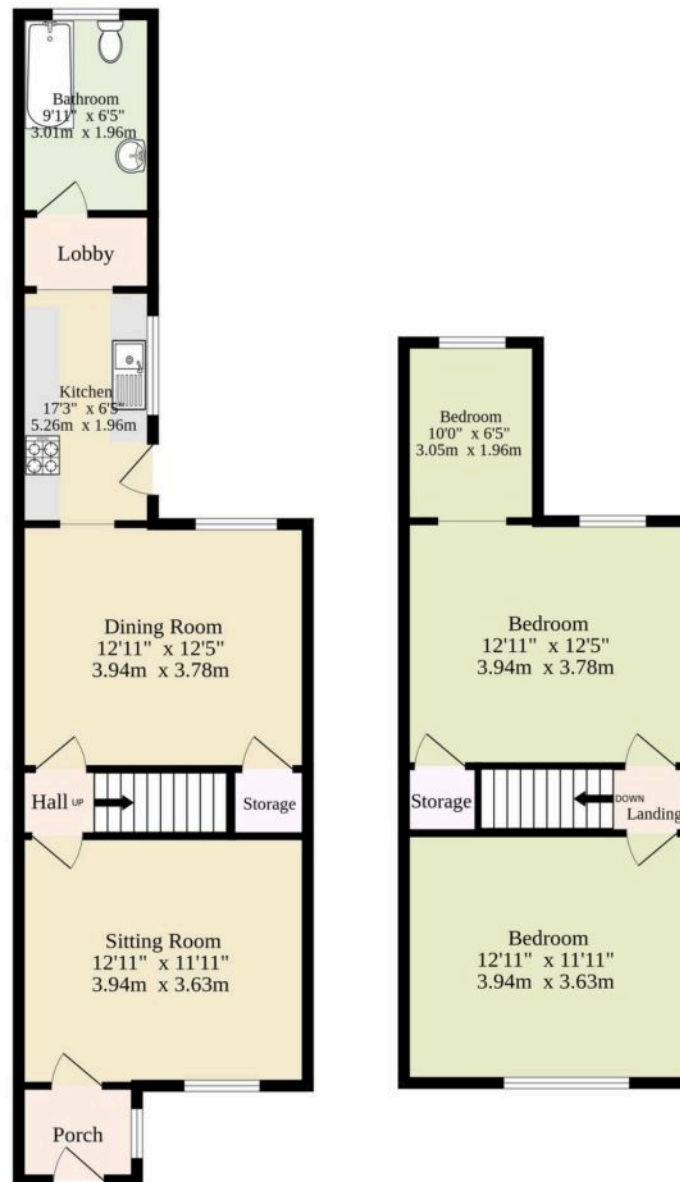
Lowestoft

- Mid-terrace residence in the coastal town of Lowestoft
- Perfect first home or investment purchase
- Two bright and airy reception rooms, one accentuated by a wood burner, inviting relaxation and entertaining
- Kitchen fitted with a range of cabinetry, an integrated double oven, a gas hob and storage options
- Modern family bathroom showcasing a three-piece suite
- Three bedrooms
- Low maintenance and private garden, with an artificial lawn and space for a small storage shed
- On-road parking available
- Close to local shops, schools, healthcare facilities and transport links



Ground Floor
480 sq.ft. (44.6 sq.m.) approx.

1st Floor
357 sq.ft. (33.2 sq.m.) approx.



TOTAL FLOOR AREA : 837 sq.ft. (77.8 sq.m.) approx.

Whilst every attempt has been made to ensure the accuracy of the floorplan contained here, measurements of doors, windows, rooms and any other items are approximate and no responsibility is taken for any error, omission or mis-statement. This plan is for illustrative purposes only and should be used as such by any prospective purchaser. The services, systems and appliances shown have not been tested and no guarantee as to their operability or efficiency can be given.

Made with Metropix ©2025