



143 Mounbatten Drive, Norwich

Guide Price £425,000



# 143 Mountbatten Drive

Norwich, Norwich

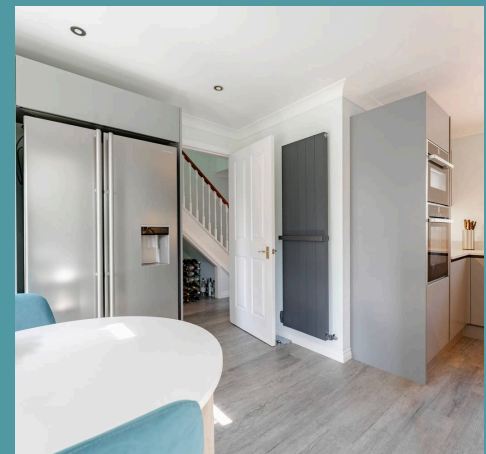
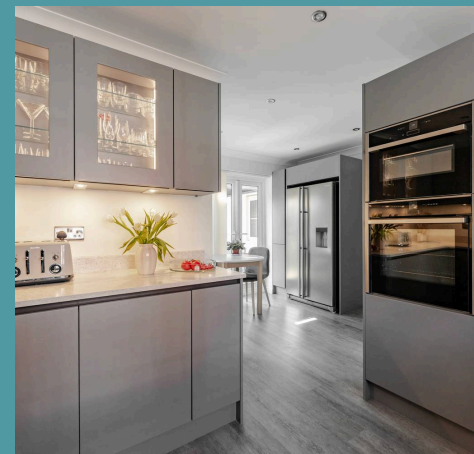
Guide Price £425,000 - £450,000 Step into a world of contemporary living with this beautifully updated detached home, perfectly designed for modern family life. Set on a desirable corner plot in the heart of Sprowston, this spacious property offers four generous bedrooms, including a master suite with its own stylish en-suite. The inviting layout effortlessly flows from the bright lounge to the dining room and newly fitted kitchen, creating an ideal space for both everyday living and entertaining. Outside, the landscaped garden with a large patio provides a private oasis, while the double garage and carport offer ample storage and parking. With every detail thoughtfully upgraded, this home offers the perfect blend of comfort and style for those seeking a move-in ready lifestyle.

Council Tax band: E

Tenure: Freehold

EPC Energy Efficiency Rating: C

EPC Environmental Impact Rating:







## 143 Mountbatten Drive

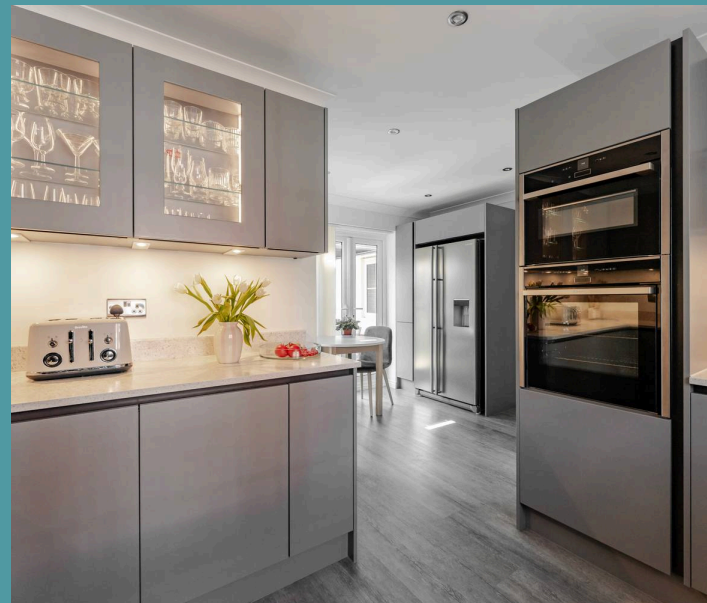
Norwich, Norwich

Guide Price £425,000 - £450,000 Step into a world of contemporary living with this beautifully updated detached home, perfectly designed for modern family life. Set on a desirable corner plot in the heart of Sprowston, this spacious property offers four generous bedrooms, including a master suite with its own stylish en-suite. The inviting layout effortlessly flows from the bright lounge to the dining room and newly fitted kitchen, creating an ideal space for both everyday living and entertaining. Outside, the landscaped garden with a large patio provides a private oasis, while the double garage and carport offer ample storage and parking. With every detail thoughtfully upgraded, this home offers the perfect blend of comfort and style for those seeking a move-in ready lifestyle.

### The Location

Mountbatten Drive enjoys a prime spot in one of Norwich's most desirable residential areas, bringing everyday convenience and a warm community feel right to your doorstep. Less than a 10-minute stroll away is Morrisons—perfect for quick food shops—while the nearby M&S Simply Food, and the Co-op, local butcher and hairdresser on Cannerby Lane, add to the ease of day-to-day living.

There are several schools in the local area, including both an infant and a junior school just a few minutes' walk from the doorstep—ideal for busy mornings and young families. Sprowston Secondary School is also nearby, providing accessible options as children grow, though it's best reached by bike, car or public transport. For



Ground Floor  
1138 sq.ft. (105.7 sq.m.) approx.

1st Floor  
602 sq.ft. (55.9 sq.m.) approx.



TOTAL FLOOR AREA : 1740 sq.ft. (161.7 sq.m.) approx.

Whilst every attempt has been made to ensure the accuracy of the floorplan contained here, measurements of doors, windows, rooms and any other items are approximate and no responsibility is taken for any error, omission or mis-statement. This plan is for illustrative purposes only and should be used as such by any prospective purchaser. The services, systems and appliances shown have not been tested and no guarantee as to their operability or efficiency can be given.

Made with Metropix ©2025

