



25 Brian Mc Carter Gardens, Costessey

Guide Price £190,000

25 Brian Mc Carter Gardens

Costessey, Norwich

Guide Price £190,000 - £200,000. This stylish two-bedroom coach house in Brian McCarter Gardens offers a sleek, low-maintenance lifestyle in a quiet no-through road within the sought-after Queens Hill development. With a private garage, additional on-street parking, and a practical utility space, it delivers both comfort and convenience. The open-plan living area is bright and modern, featuring a high-gloss fitted kitchen and a Juliette balcony in the sitting room. Two well-proportioned bedrooms include built-in storage and another Juliette balcony in the main, while the newly fitted bathroom adds a polished finishing touch. Surrounded by green spaces, local parks, and just moments from the new Co-op, schools, UEA, and the hospital, this location is perfectly placed. A superb choice for first-time buyers or those looking to downsize without compromise.

Council Tax band: B

Tenure: Freehold

EPC Energy Efficiency Rating: C

EPC Environmental Impact Rating:





25 Brian Mc Carter Gardens

Costessey, Norwich

Guide Price £190,000 - £200,000. This stylish two-bedroom coach house in Brian McCarter Gardens offers a sleek, low-maintenance lifestyle in a quiet no-through road within the sought-after Queens Hill development. With a private garage, additional on-street parking, and a practical utility space, it delivers both comfort and convenience. The open-plan living area is bright and modern, featuring a high-gloss fitted kitchen and a Juliette balcony in the sitting room. Two well-proportioned bedrooms include built-in storage and another Juliette balcony in the main, while the newly fitted bathroom adds a polished finishing touch. Surrounded by green spaces, local parks, and just moments from the new Co-op, schools, UEA, and the hospital, this location is perfectly placed. A superb choice for first-time buyers or those looking to downsize without compromise.

The Location

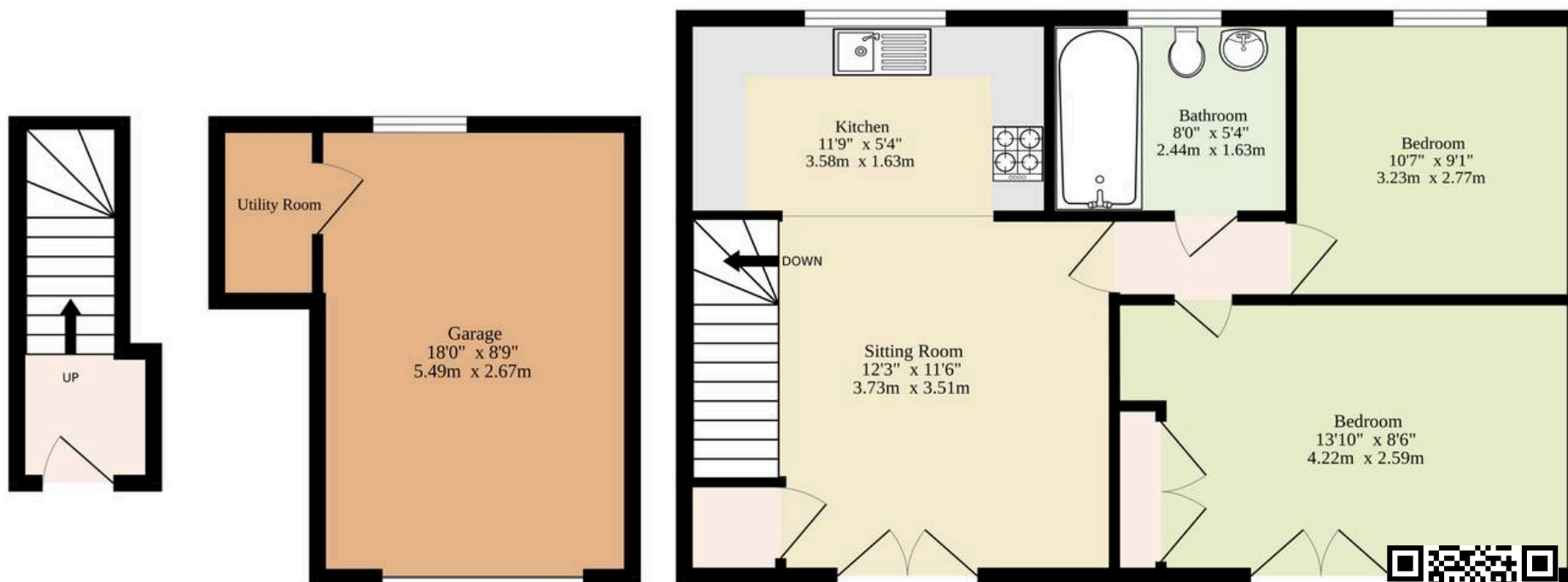
Positioned within the family-friendly Queens Hill development in Costessey, Brian McCarter Gardens delivers a location that blends everyday convenience with a strong sense of community. Surrounded by open green spaces and well-maintained parks, it's an ideal spot for those who enjoy weekend strolls or morning walks right on their doorstep. The area continues to grow in popularity, thanks in part to the recent addition of a Co-op, adding to the already impressive range of local amenities.



Families benefit from nearby schools and play areas, while excellent access to the University of East Anglia and the Norfolk and Norwich Hospital

Ground Floor
235 sq.ft. (21.8 sq.m.) approx.

1st Floor
492 sq.ft. (45.7 sq.m.) approx.



TOTAL FLOOR AREA : 727 sq.ft. (67.5 sq.m.) approx.

Whilst every attempt has been made to ensure the accuracy of the floorplan contained here, measurements of doors, windows, rooms and any other items are approximate and no responsibility is taken for any error, omission or mis-statement. This plan is for illustrative purposes only and should be used as such by any prospective purchaser. The services, systems and appliances shown have not been tested and no guarantee as to their operability or efficiency can be given.
Made with Metropix ©2025

