



37 Ecton Walk, Norwich
£250,000

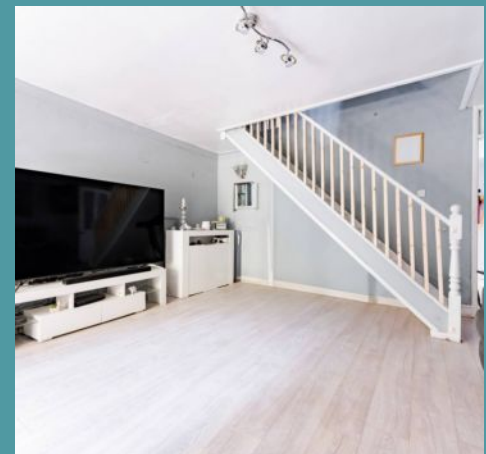
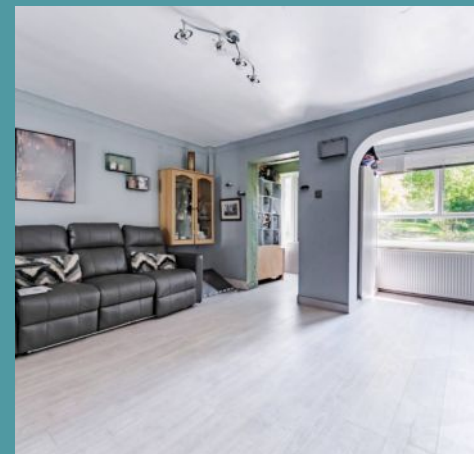
37 Ecton Walk

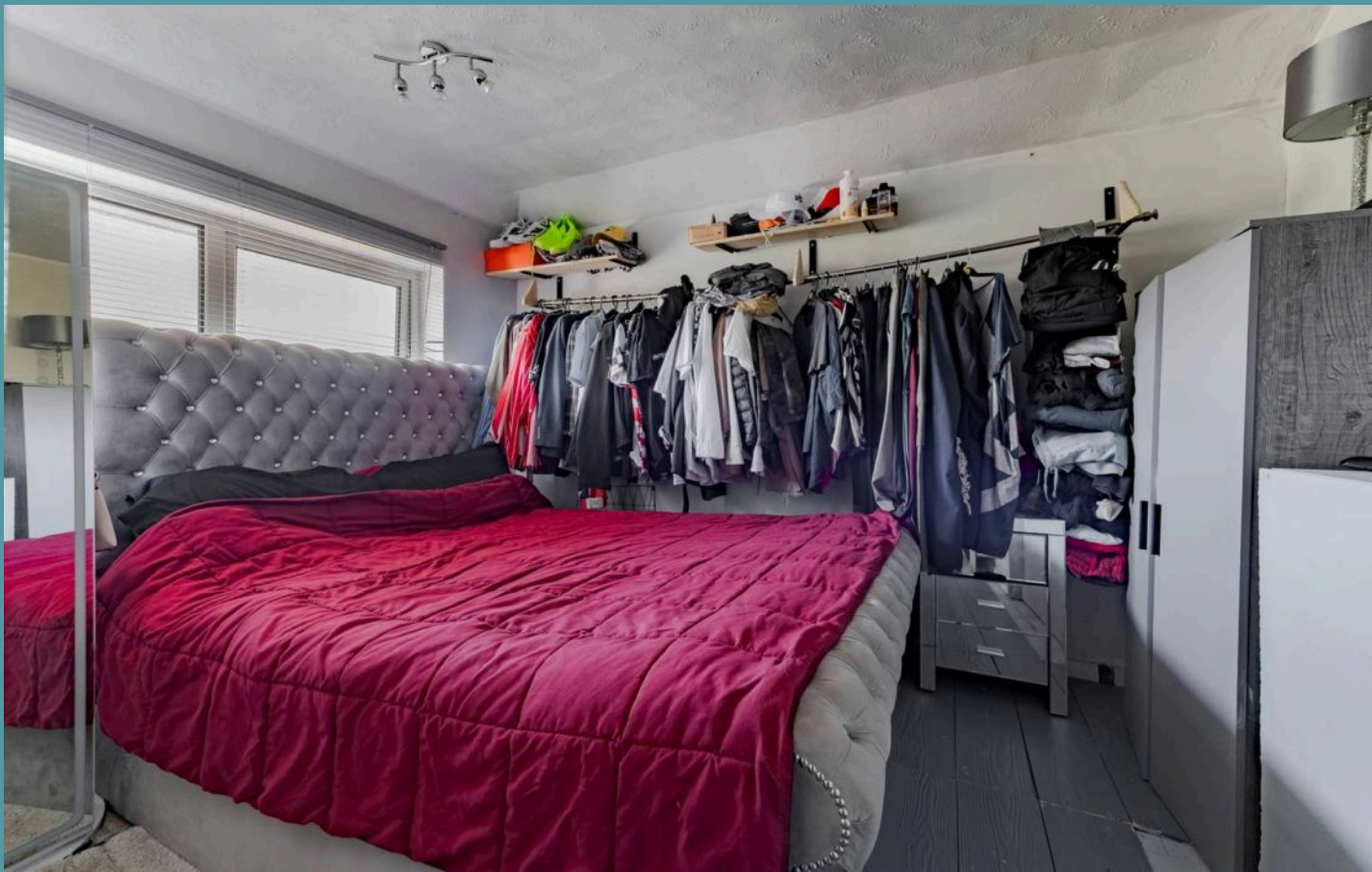
Norwich

Presenting this end of terrace residence to the market, positioned within the vibrant city of Norwich. Perfect for first time buyers, families or investors, showcasing an extended porch, a spacious sitting room, a new kitchen, a conservatory, three bedrooms and a shower room. Externally, you will find a well-established and beautifully maintained garden, along with off-road parking and a garage for storage options. Acquire this home to experience a lifestyle of comfort and ease.

Location

The NR6 area of Norwich lies to the north and northwest of the city centre, encompassing well-established suburbs such as Hellesdon, Old Catton, and parts of Mile Cross. It offers a mix of residential housing, green spaces, and convenient access to both the city and surrounding countryside. NR6 is popular with families and professionals due to its good local schools, frequent public transport, and proximity to Norwich International Airport. The area features a variety of amenities including shopping centres, parks, and community facilities, making it a comfortable and practical place to live within the wider Norwich region.





37 Ecton Walk

Norwich

Upon arriving at the residence, you are greeted by an extended porch that sets the tone for the bright and airy interior within. The spacious sitting room invites relaxation and entertaining. The room is thoughtfully designed to effortlessly accommodate various furniture arrangements, making it the heart of the home for social gatherings or quiet evenings in. The kitchen is equipped with modern fixtures and fittings, including sleek wall and base units, integrated appliances and a central island, to enhance your cooking experience. Extending the reception space is a conservatory, allowing you to enjoy the beauty of the outdoors from the comfort of your own home.

Ascend to the first floor, where you will encounter three bedrooms, each thoughtfully designed to offer relaxation and privacy. The third bedroom has the versatility to be a home office, dressing room or a playroom, depending on your own lifestyle preferences. Completing the upper floor is a shower room, comprising of a contemporary three-piece suite.



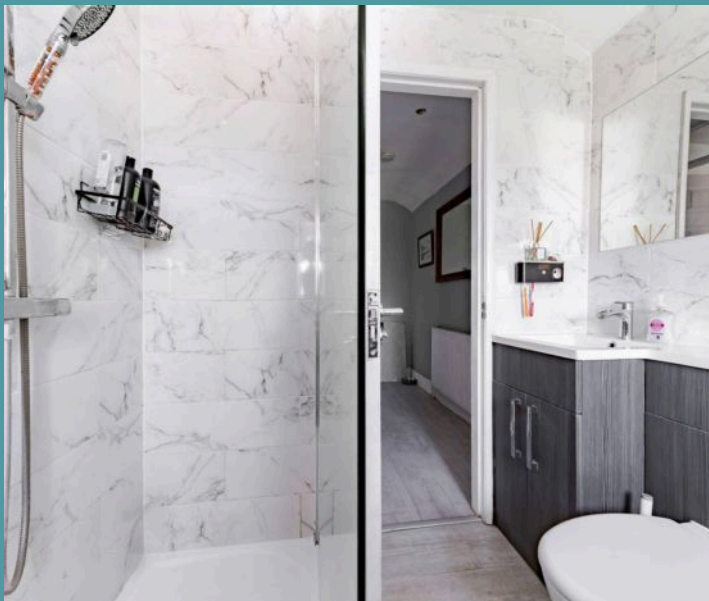


37 Ecton Walk

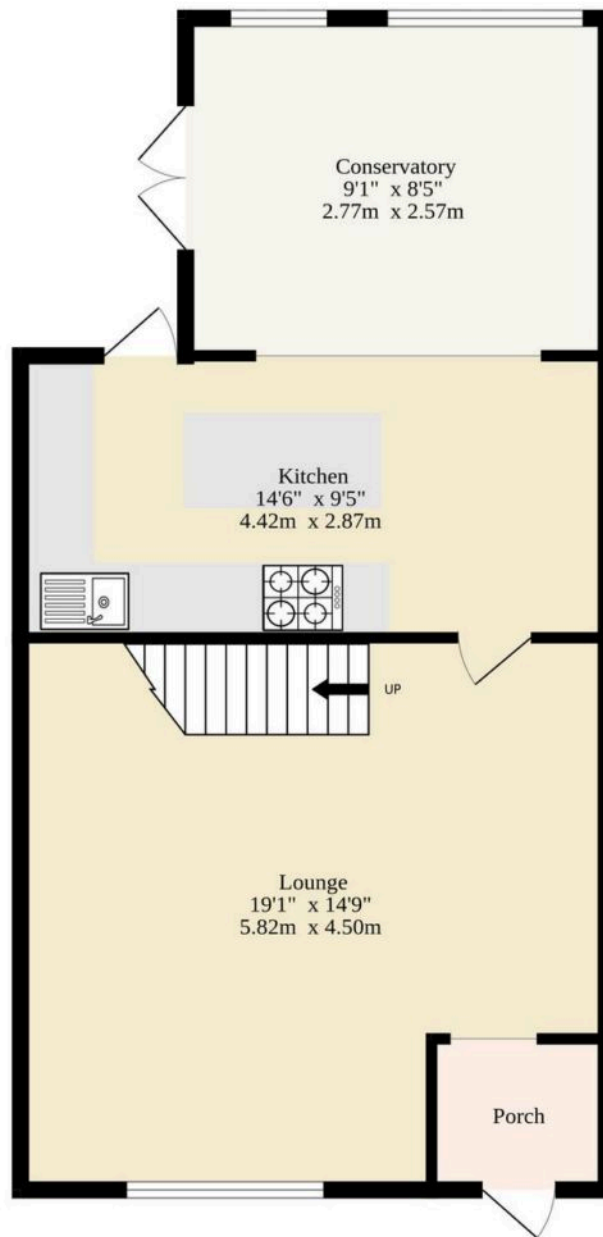
Norwich

Outside, the well-established garden is a delight to behold, beautifully maintained and fully enclosed for privacy. It is predominantly artificial lawn, bordered by planted beds, shrubbery and mature trees. There are several areas for seating arrangements, for you to enjoy al-fresco dining, summer bbqs or simply relaxing in the afternoon sunshine. At the rear of the property is off-road parking and a garage for storage options.

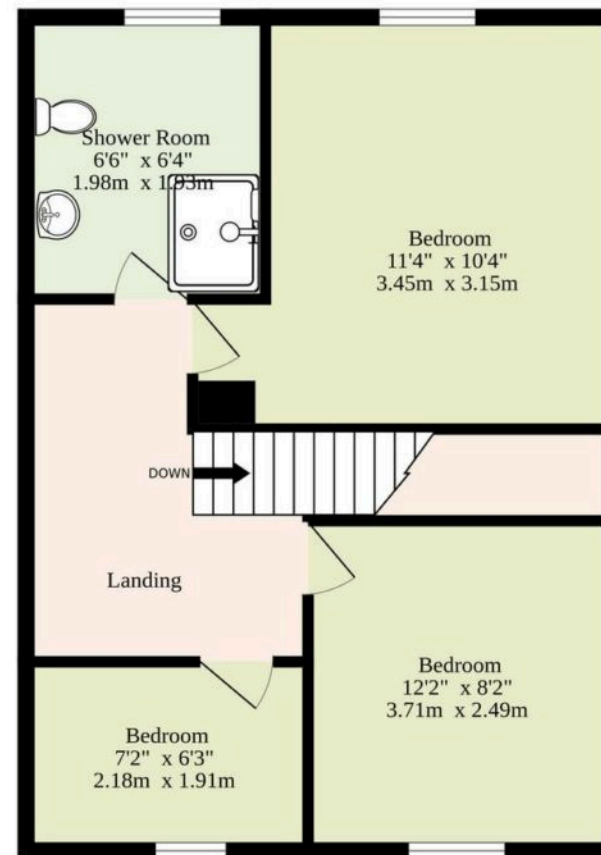
- End of terrace residence with a larger plot, in the vibrant city of Norwich
- Perfect first home, family home or investment purchase
- Spacious sitting room inviting relaxation and entertaining
- Newly fitted kitchen equipped with modern fixtures and fittings
- Light-filled conservatory that extends the reception space, offering views of the garden
- Three bedrooms and a contemporary shower room
- Well-established garden that is beautifully maintained, fully enclosed for privacy
- Off-road parking and a garage for storage options
- Extended porch
- Close to local shops, schools, healthcare facilities and transport links



Ground Floor
518 sq.ft. (48.1 sq.m.) approx.



1st Floor
364 sq.ft. (33.8 sq.m.) approx.



TOTAL FLOOR AREA : 882 sq.ft. (81.9 sq.m.) approx.

Whilst every attempt has been made to ensure the accuracy of the floorplan contained here, measurements of doors, windows, rooms and any other items are approximate and no responsibility is taken for any error, omission or mis-statement. This plan is for illustrative purposes only and should be used as such by any prospective purchaser. The services, systems and appliances shown have not been tested and no guarantee as to their operability or efficiency can be given.
Made with Metropix ©2025

