



140 Fairway, Costessey  
£160,000



# 140 Fairway

Costessey, Norwich

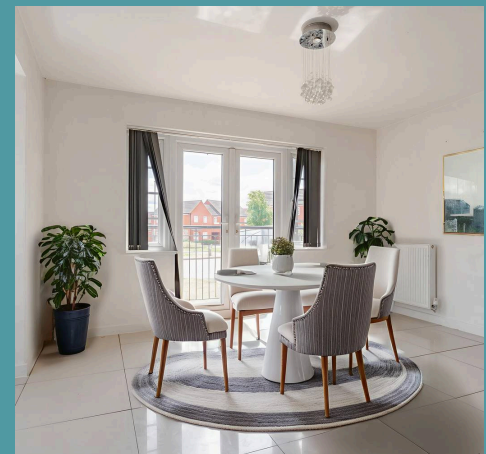
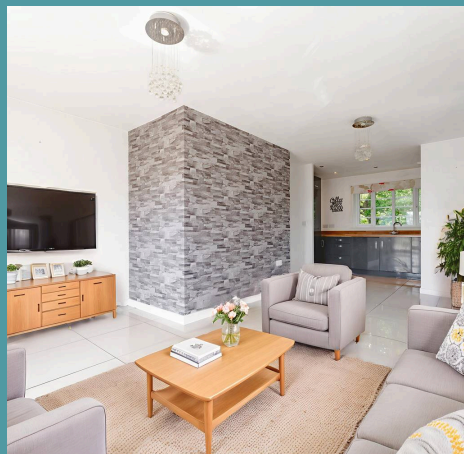
Fairway in Costessey presents a sleek, modern and chain-free ground floor apartment within the ever-popular Queens Hill development—an area known for high demand and quick sales. This turn-key home offers two double bedrooms, including a main with built-in storage and ensuite, plus a spacious hallway and stylish main bathroom. The generous open-plan living space is flooded with natural light thanks to a bay window and Juliet balcony, while the grey gloss kitchen with integrated appliances adds a polished, contemporary touch. With green spaces, shops, and transport links close by, it's ideal for those needing quick access to the city, UEA, or NNUH. A fantastic first-time buy with no onward chain, ready to enjoy from day one.

Council Tax band: B

Tenure: Leasehold

EPC Energy Efficiency Rating: C

EPC Environmental Impact Rating: C







## 140 Fairway

Costessey, Norwich

Fairway in Costessey presents a sleek, modern and chain-free ground floor apartment within the ever-popular Queens Hill development—an area known for high demand and quick sales. This turn-key home offers two double bedrooms, including a main with built-in storage and ensuite, plus a spacious hallway and stylish main bathroom. The generous open-plan living space is flooded with natural light thanks to a bay window and Juliet balcony, while the grey gloss kitchen with integrated appliances adds a polished, contemporary touch. With green spaces, shops, and transport links close by, it's ideal for those needing quick access to the city, UEA, or NNUH. A fantastic first-time buy with no onward chain, ready to enjoy from day one.

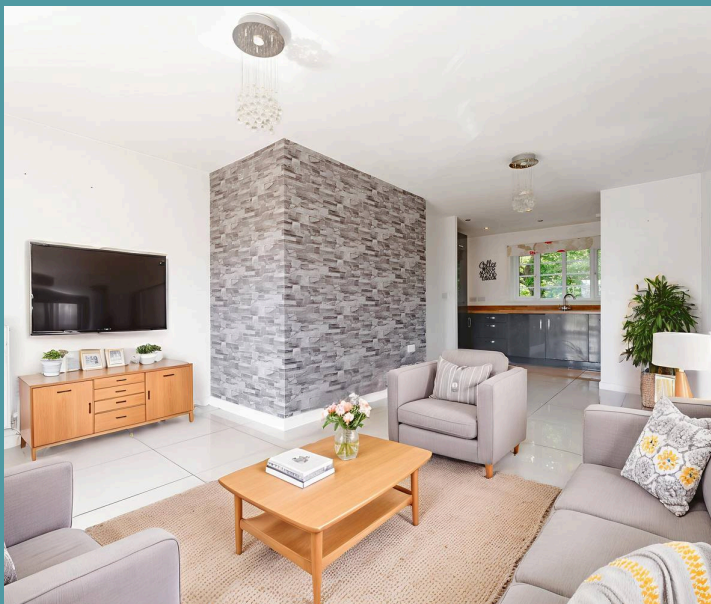
### The Location

Fairway, located in Costessey, offers a peaceful residential setting with easy access to a range of local amenities. The area provides good transport links, with nearby bus routes and the A47 offering quick connections to Norwich city centre.

Surrounded by green spaces and parks, residents can enjoy a quiet environment with convenient access to shops, schools, and leisure facilities. The location is ideal for those seeking proximity to both the University of East Anglia and the Norfolk and Norwich University Hospital, which are just a short drive away.

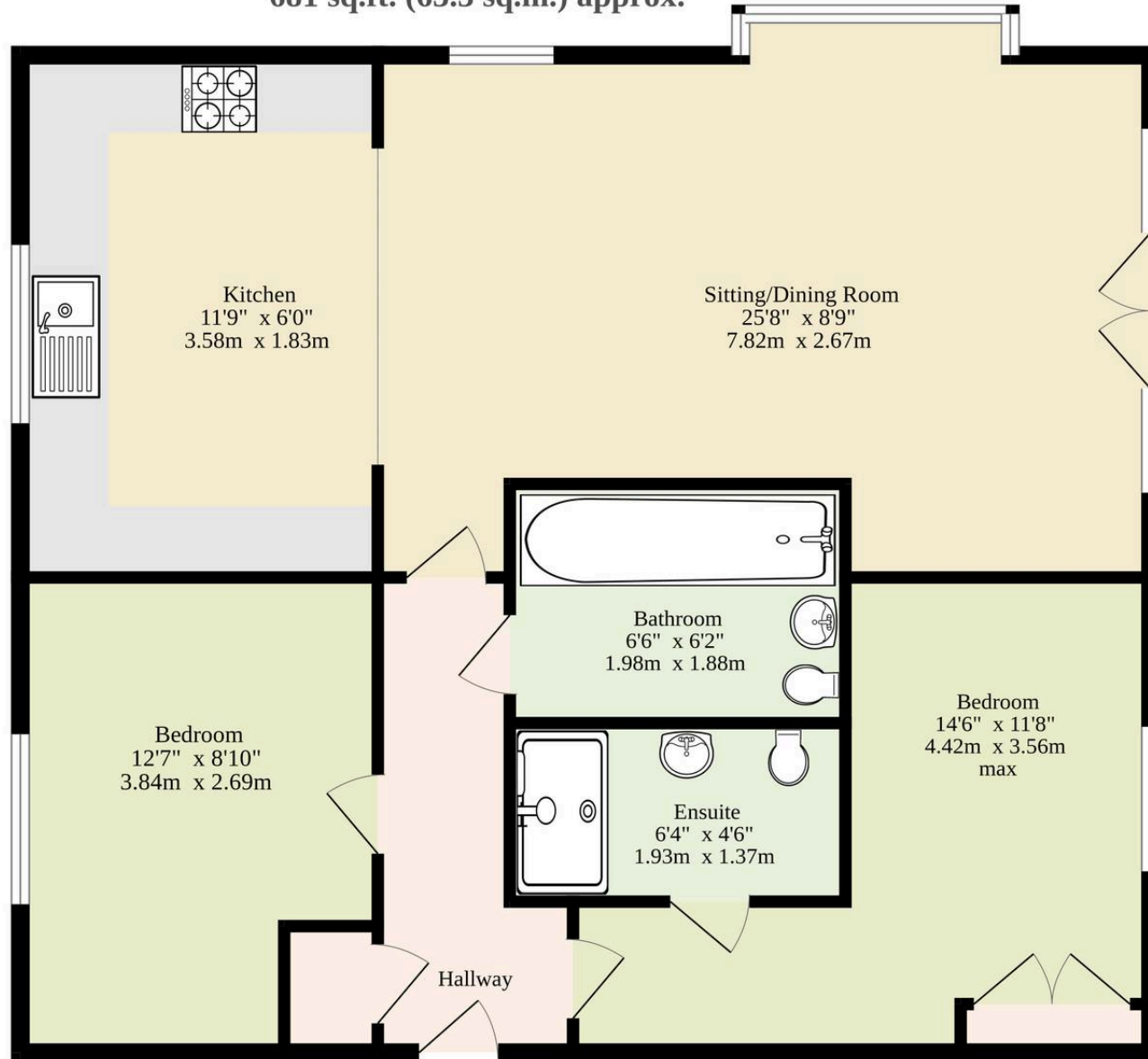
### Fairway, Costessey

Set within the established and ever-popular Queens Hill development in Costessey, this modern ground





681 sq.ft. (63.3 sq.m.) approx.



TOTAL FLOOR AREA : 681 sq.ft. (63.3 sq.m.) approx.

Whilst every attempt has been made to ensure the accuracy of the floorplan contained here, measurements of doors, windows, rooms and any other items are approximate and no responsibility is taken for any error, omission or mis-statement. This plan is for illustrative purposes only and should be used as such by any prospective purchaser. The services, systems and appliances shown have not been tested and no guarantee as to their operability or efficiency can be given.  
Made with Metropix ©2025