



Barbara Dene Burton Street, Lowestoft

Offers in Region of £160,000

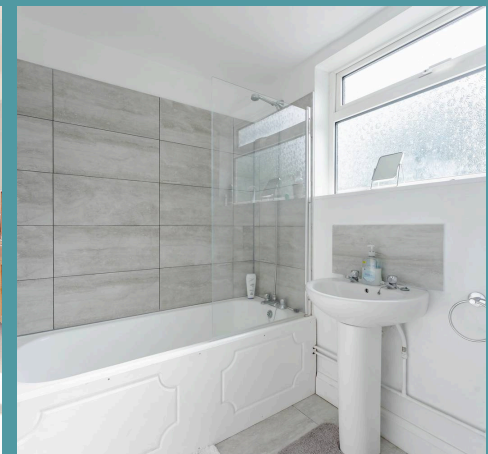
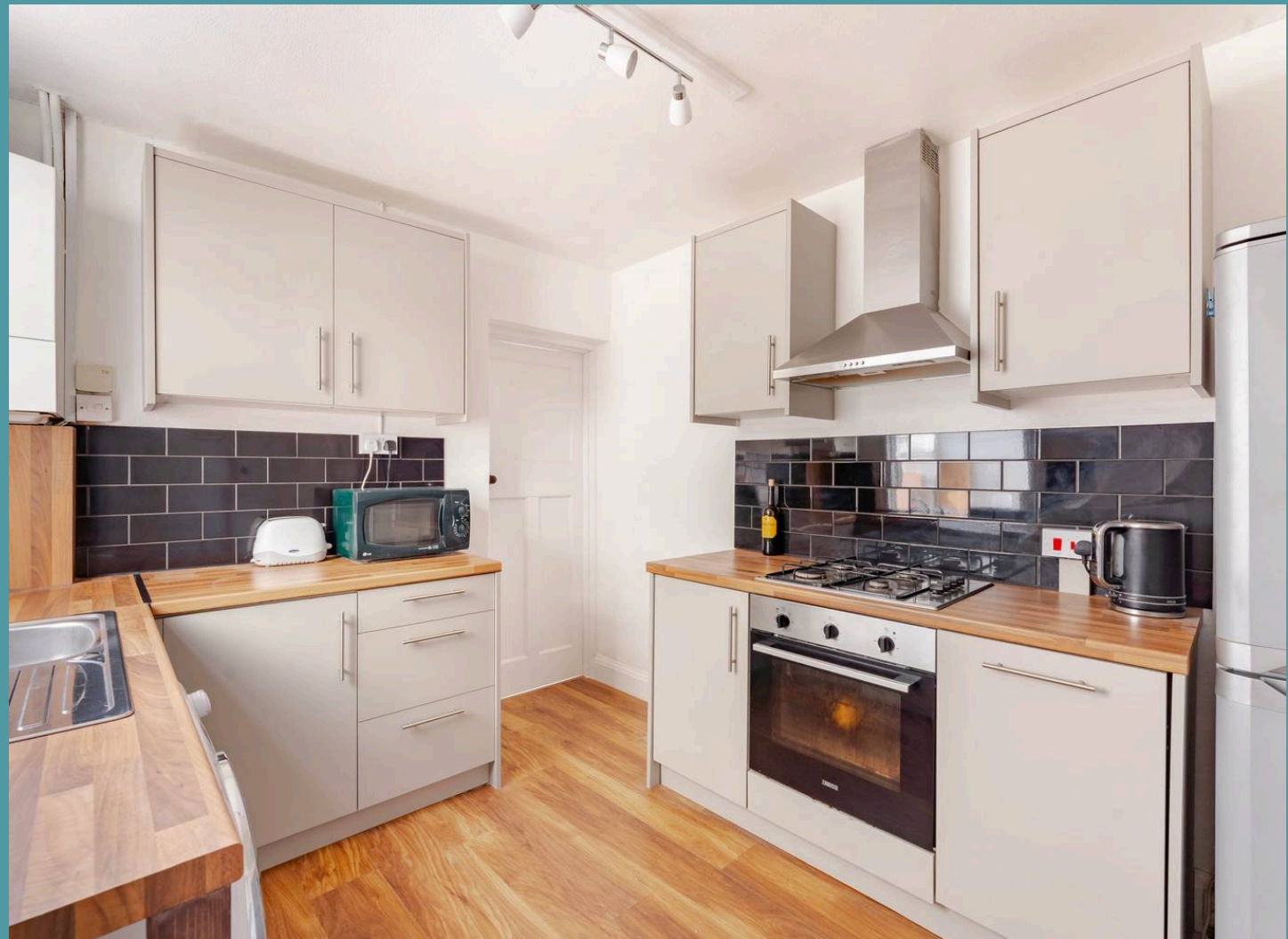
Barbara Dene Burton Street

Lowestoft

Step into this beautifully presented mid-terrace home in the heart of Lowestoft. Ideal for first-time buyers or investors, this bright and airy property boasts an open-plan living and dining space with characterful brick fireplaces, a modern fitted kitchen, and a stylish ground floor bathroom. With three versatile bedrooms, a private laid-to-lawn garden, and convenient on-road parking, this home offers comfort, flexibility, and timeless appeal in a wonderful setting.

Location

This home is located on the most easterly point of the British Isles, in the traditional seaside town of Lowestoft. This wonderful seaside destination is steeped in history and offers a delightful blend of coastal allure and urban convenience. With its Blue Flag award-winning sandy beaches, Victorian seafront gardens and two charming piers, residents are treated to strolls along the shore and tranquil moments amidst nature's beauty. There are a number of schools in the area to suit all ages, a range of amenities including a Post Office, Bus Station and Train Station, which both run regular services to Norwich and plenty of shopping facilities and restaurants.





Barbara Dene Burton Street

Lowestoft

Step through a welcoming entrance hall into a thoughtfully designed bright and airy interior, with a layout that maximizes natural light and functionality throughout.

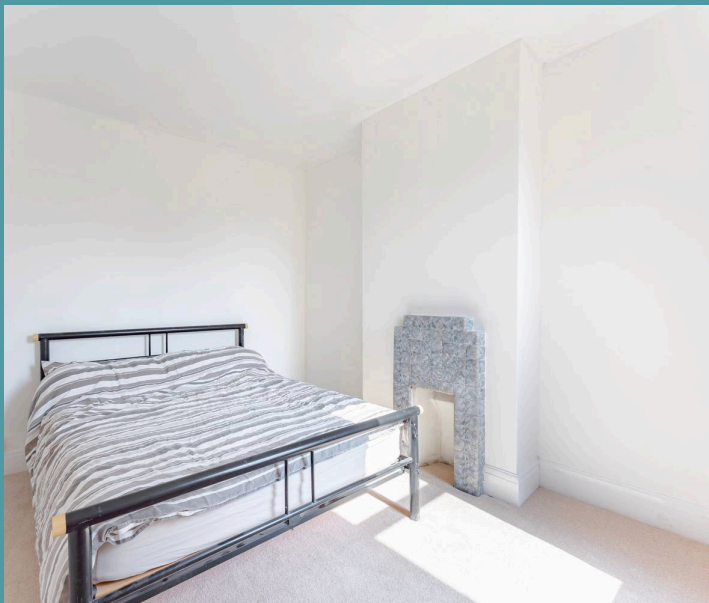
The open-plan sitting and dining room serves as the heart of the home, a warm, inviting space enhanced by two charming brick-built fireplaces, ideal for both relaxing evenings and entertaining guests.

The kitchen is well-equipped with a range of modern wall and base units, an integrated oven, and ample space for your own appliances, offering plenty of room for culinary creativity and everyday practicality.

A family bathroom is conveniently located on the ground floor, featuring a three-piece suite, stylish tiling, and contemporary fixtures.

Upstairs, you'll find three generously sized bedrooms, each offering versatility to suit your lifestyle, whether used as guest bedroom, a dedicated home office, or a stylish dressing room.

Outside, a well-maintained and private rear garden awaits, complete with a laid-to-lawn area, providing the perfect space for outdoor enjoyment. On-road permit parking is available, adding to the property's convenience.

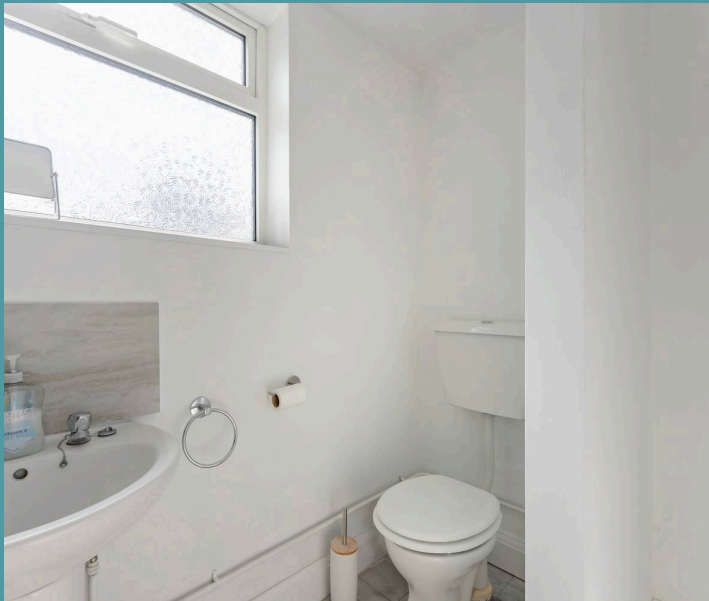




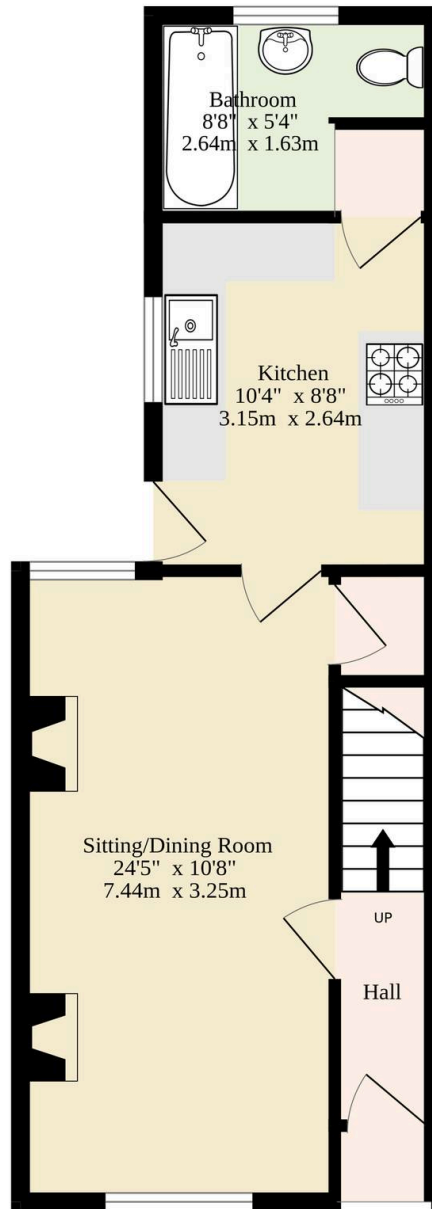
Barbara Dene Burton Street

Lowestoft

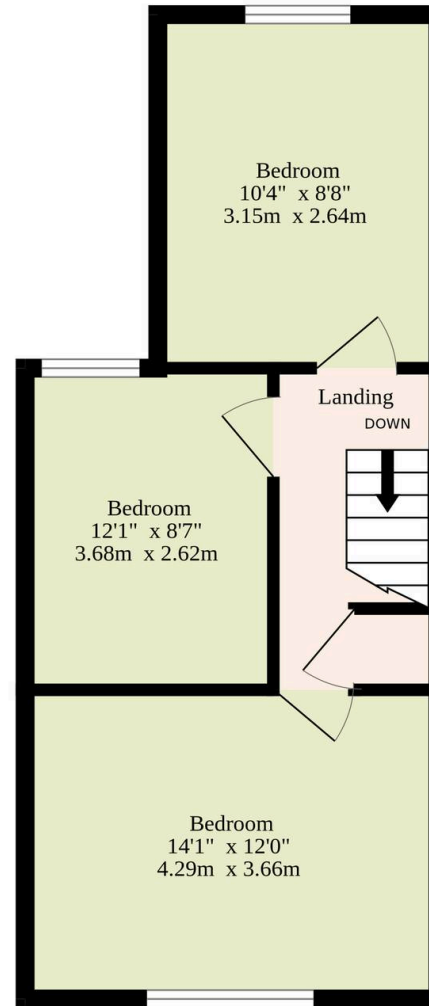
- Mid-terrace residence in the coastal town of Lowestoft
- Perfect first home or investment purchases
- Well-presented throughout, with a bright and airy interior
- Open-plan sitting/dining room accentuated by two brick-built fireplaces, inviting relaxation and entertainment
- Kitchen fitted with modern wall and base cabinetry, an integrated oven, spaces for your own appliances and storage
- A ground floor family bathroom with a three-piece suite
- Three bedrooms, with the versatility to be a home office or a dressing room
- Maintained and private garden, with a laid to lawn
- On-road permit parking available
- Close to local shops, schools, healthcare facilities and transport links



Ground Floor
440 sq.ft. (40.9 sq.m.) approx.



1st Floor
425 sq.ft. (39.5 sq.m.) approx.



TOTAL FLOOR AREA : 865 sq.ft. (80.4 sq.m.) approx.

Whilst every attempt has been made to ensure the accuracy of the floorplan contained here, measurements of doors, windows, rooms and any other items are approximate and no responsibility is taken for any error, omission or mis-statement. This plan is for illustrative purposes only and should be used as such by any prospective purchaser. The services, systems and appliances shown have not been tested and no guarantee as to their operability or efficiency can be given.
Made with Metropix ©2025