



Blowing Wild The Street, Lessingham

Offers in Region of £395,000

Blowing Wild The Street

Lessingham, Norwich

Blowing Wild is a beautifully presented two-bedroom bungalow in the sought-after village of Lessingham, offering a bright and spacious layout throughout. The large driveway provides ample parking, while the extended, insulated garage and boarded loft over the bungalow offer excellent storage. Inside, both bedrooms are doubles with built-in storage, complemented by a modern bathroom and a stylish kitchen diner. The lounge features a charming wood burner, adding a cosy touch to the home's airy and welcoming feel. Outside, the mature garden enjoys open field views, a sunny aspect, and a large patio area ideal for relaxing or entertaining. With scope to extend further (STPP), this move-in-ready bungalow combines comfort, practicality and future potential in a peaceful countryside setting.

Council Tax band: C

Tenure: Freehold

EPC Energy Efficiency Rating: D

EPC Environmental Impact Rating:





Blowing Wild The Street

Lessingham, Norwich

Blowing Wild is a beautifully presented two-bedroom bungalow in the sought-after village of Lessingham, offering a bright and spacious layout throughout. The large driveway provides ample parking, while the extended, insulated garage and boarded loft over the bungalow offer excellent storage. Inside, both bedrooms are doubles with built-in storage, complemented by a modern bathroom and a stylish kitchen diner. The lounge features a charming wood burner, adding a cosy touch to the home's airy and welcoming feel. Outside, the mature garden enjoys open field views, a sunny aspect, and a large patio area ideal for relaxing or entertaining. With scope to extend further (STPP), this move-in-ready bungalow combines comfort, practicality and future potential in a peaceful countryside setting.

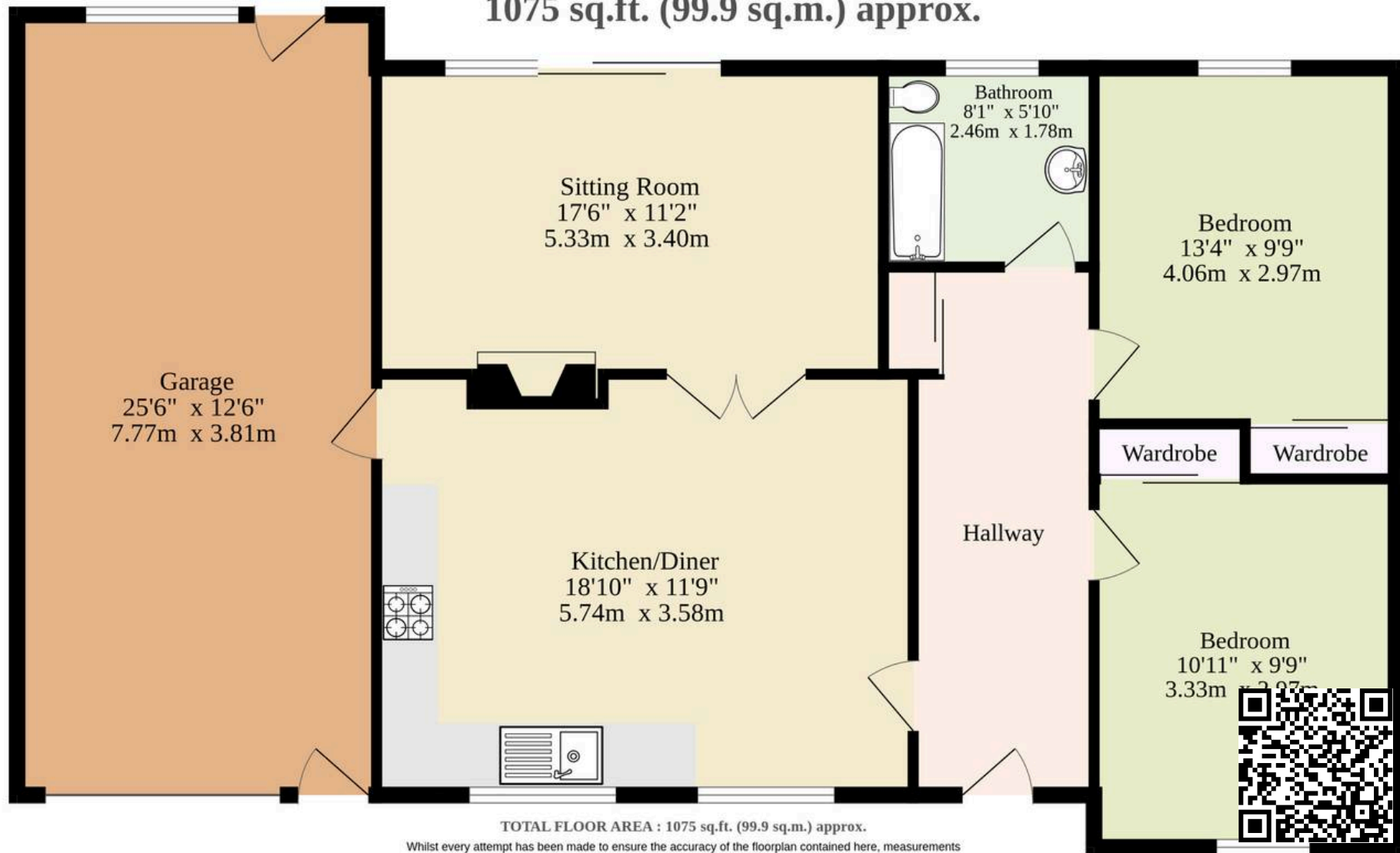
The Location

Lessingham is a charming Norfolk village that offers all the appeal of countryside living with the coast just a short drive away. Surrounded by open fields and winding country lanes, it's the kind of place where life moves at a gentler pace and the natural beauty speaks for itself. Whether you enjoy long walks, cycling through scenic backroads, or simply soaking up peaceful surroundings, Lessingham has a wonderfully relaxed feel that's hard to beat.

Despite its rural setting, the village is well-connected. Coastal favourites like Cromer and Sea Palling are within easy reach for days at the beach, local shops and great places to eat, while the Norfolk Broads are nearby too – perfect for getting



Ground Floor
1075 sq.ft. (99.9 sq.m.) approx.



Whilst every attempt has been made to ensure the accuracy of the floorplan contained here, measurements of doors, windows, rooms and any other items are approximate and no responsibility is taken for any error, omission or mis-statement. This plan is for illustrative purposes only and should be used as such by any prospective purchaser. The services, systems and appliances shown have not been tested and no guarantee as to their operability or efficiency can be given.
Made with Metropix ©2025