



42 Prince Of Wales Road, Caister-On-Sea
£180,000

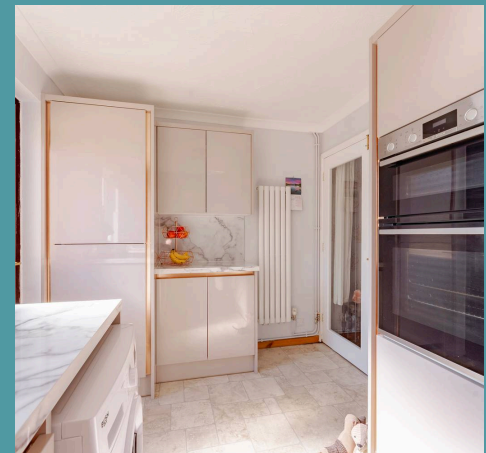
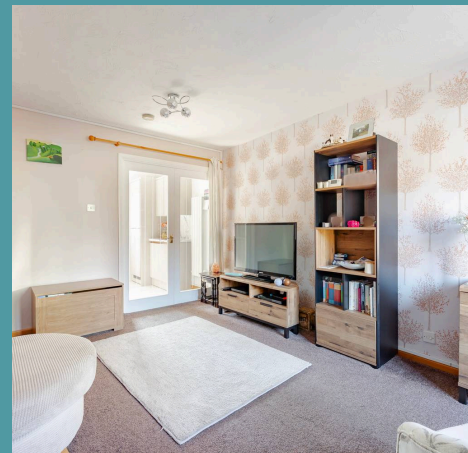
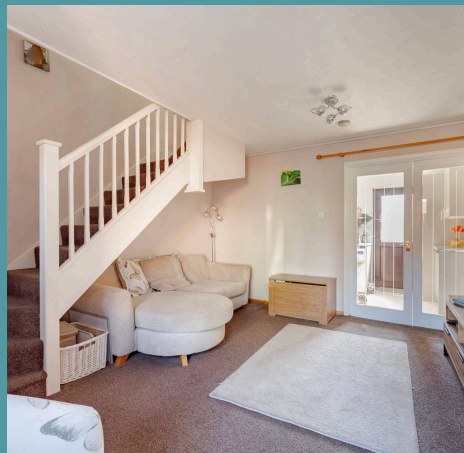
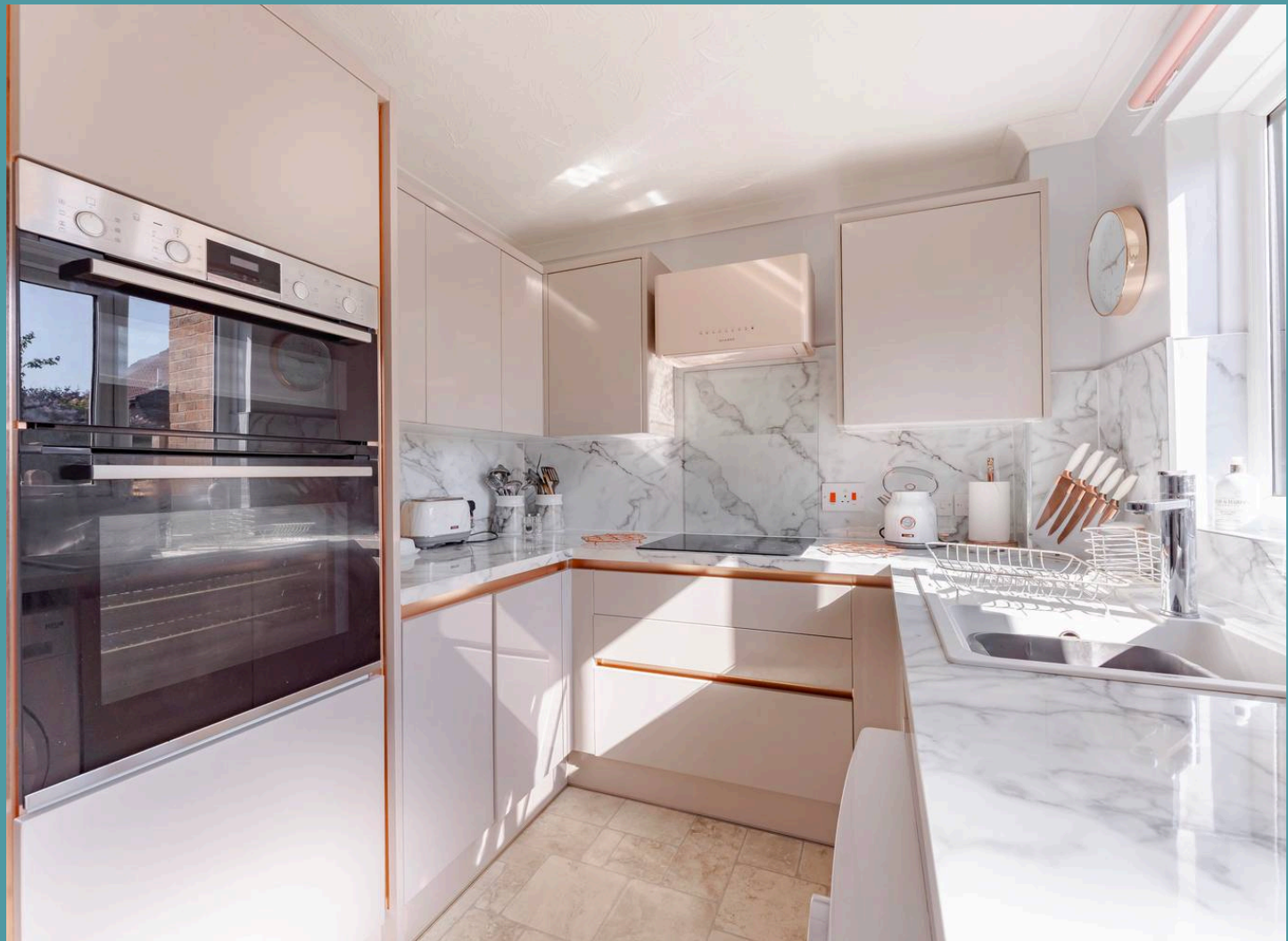
42 Prince Of Wales Road

Caister-On-Sea, Great Yarmouth

Proudly positioned in the picturesque coastal village of Caister-On-Sea, this delightful mid-terrace residence offers a rare combination of charm, comfort, and potential. Perfect for first-time buyers or investors, the property boasts a spacious sitting room for relaxed living and entertaining, a modern kitchen, two inviting bedrooms, and a well-maintained family bathroom. Outside, the fully enclosed garden provides a well-maintained space for enjoying the outdoors, while convenient on-road parking adds extra ease. With its ideal location and immaculate presentation, this home offers a lifestyle of comfort and ease.

Location

Caister-on-Sea is a coastal village located in the county of Norfolk, situated on the North Sea coast. It lies approximately 3 miles north of Great Yarmouth, making it part of the Greater Yarmouth area. Caister-on-Sea is also historically significant, with its origins dating back to Roman times, as evidenced by the nearby Caister Roman fort. The area is well-served by local amenities, including shops, cafes, and schools such as Caister Academy, with regular bus links to surrounding areas. The village is well-connected by road and is close to the A149, making it easily accessible.





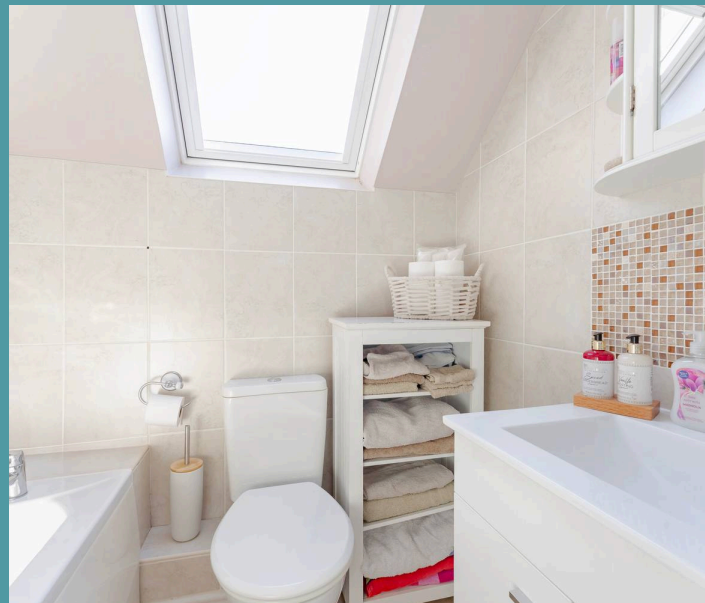
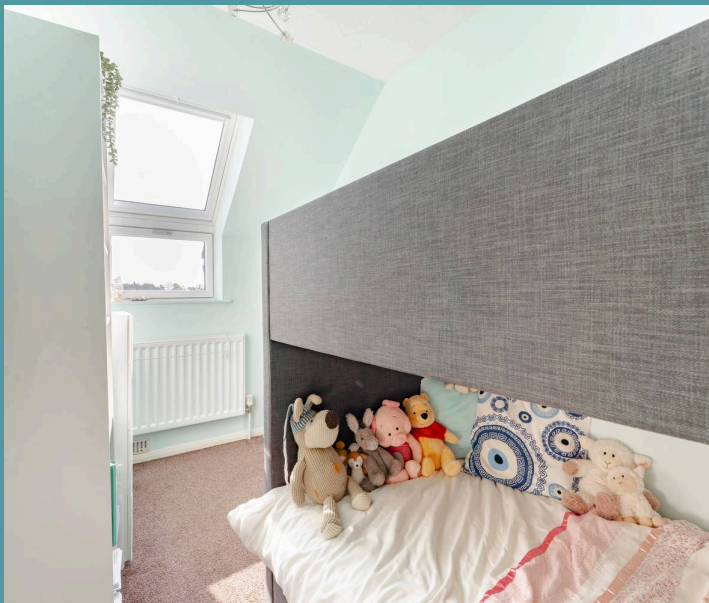
42 Prince Of Wales Road

Caister-On-Sea, Great Yarmouth

Offering the perfect blend of modern comfort and coastal charm, this property boasts a spacious sitting room that invites relaxation and is ideal for both quiet evenings and entertaining guests. The kitchen is beautifully appointed with contemporary fixtures and fittings, including sleek cabinetry, integrated appliances and plenty of storage space, to be able to cook your favourite meals.

The home features two well-proportioned bedrooms, each offering ample space and natural light, alongside a stylish family bathroom that adds to the overall appeal.

Outside, the property benefits from a well-maintained, fully enclosed garden, providing a private outdoor space ideal for enjoying summer bbqs or simply relaxing in the afternoon sunshine.

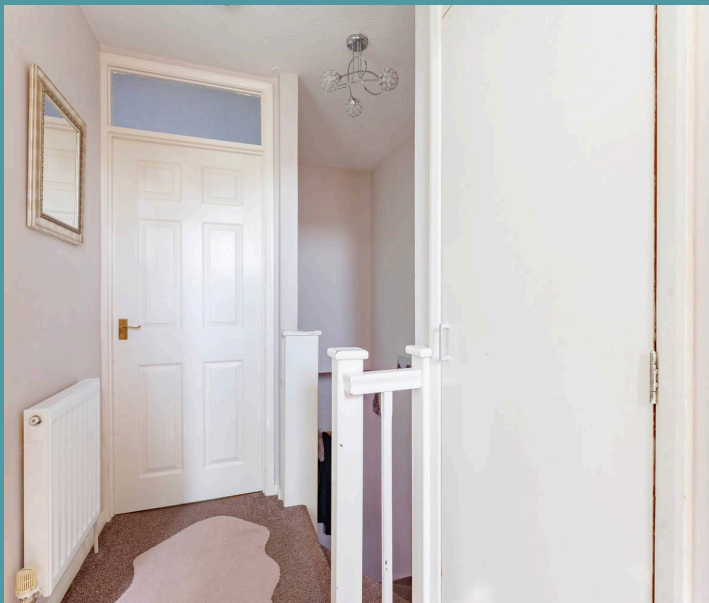




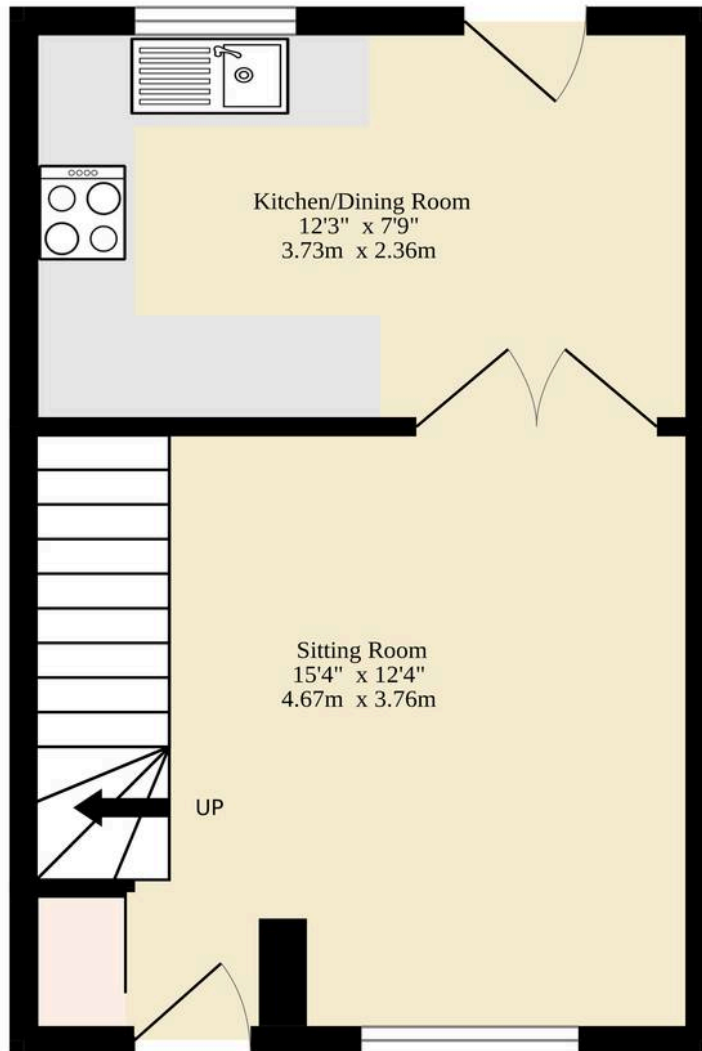
42 Prince Of Wales Road

Caister-On-Sea, Great Yarmouth

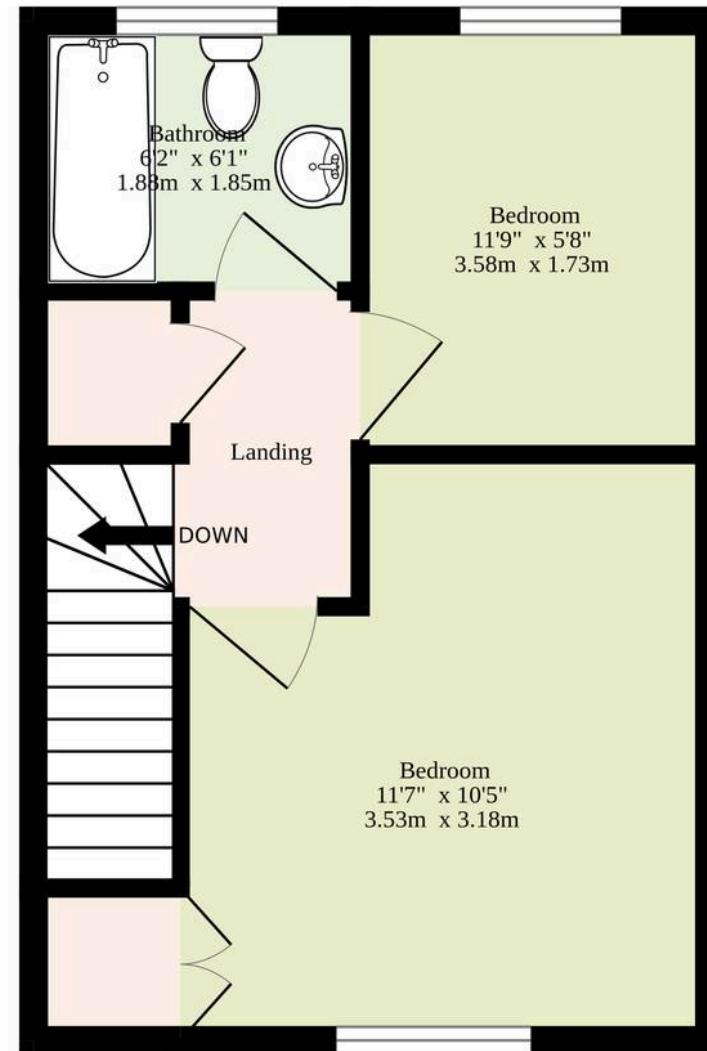
- Mid-terrace residence in the coastal village of Caister-On-Sea
- Perfect first home or investment purchase
- Spacious sitting room inviting relaxation and entertaining
- Kitchen equipped with modern fixtures and fittings
- Two bedrooms and a family bathroom
- Well-maintained and fully enclosed garden
- On-road parking available
- Close to local shops, schools, healthcare facilities and transport links



Ground Floor
190 sq.ft. (17.7 sq.m.) approx.



1st Floor
259 sq.ft. (24.1 sq.m.) approx.



TOTAL FLOOR AREA : 449 sq.ft. (41.7 sq.m.) approx.

Whilst every attempt has been made to ensure the accuracy of the floorplan contained here, measurements of doors, windows, rooms and any other items are approximate and no responsibility is taken for any error, omission or mis-statement. This plan is for illustrative purposes only and should be used as such by any prospective purchaser. The services, systems and appliances shown have not been tested and no guarantee as to their operability or efficiency can be given.
Made with Metropix ©2025

