





Guide price £60,000 - £70,000. Positioned within The Meadows at Alder Country Park, this elevated holiday-use only park home enjoys a peaceful green backdrop and an exterior that complements its natural surroundings. A raised decked entrance leads into a bright, open plan layout designed for easy living and entertaining. The galley kitchen overlooks the main living space, featuring a gas hob, sink, and ample storage to keep things tidy and functional. Double patio doors flood the living area with natural light and open onto a terraced deck, ideal for outdoor dining. Two generously sized bedrooms offer comfort and practicality, with the main bedroom boasting an ensuite and dressing area. A second bathroom adds flexibility, all set within easy reach of North Walsham's amenities and the stunning Norfolk coast.

### The Location

The Meadows is situated within Alder Country Park. This desirable location is on the outskirts of North Walsham, a historic market town in Norfolk. Residents of The Meadows benefit from easy access to local amenities, including shops, cafes,



Guide price £60,000 - £70,000. Positioned within The Meadows at Alder Country Park, this elevated holiday-use only park home enjoys a peaceful green backdrop and an exterior that complements its natural surroundings. A raised decked entrance leads into a bright, open plan layout designed for easy living and entertaining. The galley kitchen overlooks the main living space, featuring a gas hob, sink, and ample storage to keep things tidy and functional. Double patio doors flood the living area with natural light and open onto a terraced deck, ideal for outdoor dining. Two generously sized





Guide price £60,000 - £70,000. Positioned within The Meadows at Alder Country Park, this elevated holiday-use only park home enjoys a peaceful green backdrop and an exterior that complements its natural surroundings. A raised decked entrance leads into a bright, open plan layout designed for easy living and entertaining. The galley kitchen overlooks the main living space, featuring a gas hob, sink, and ample storage to keep things tidy and functional. Double patio doors flood the living area with natural light and open onto a terraced deck, ideal for outdoor dining. Two generously sized bedrooms offer comfort and practicality, with the main bedroom boasting an ensuite and dressing area. A second bathroom adds flexibility, all set within easy reach of North Walsham's amenities and the stunning Norfolk coast.

### The Location

The Meadows is situated within Alder Country Park. This desirable location is on the outskirts of North Walsham, a historic market town in Norfolk. Residents of The Meadows benefit from easy access to local amenities, including shops, cafes, and restaurants, as well as larger supermarkets. The nearby North Norfolk coastline is just a short drive away, offering beautiful beaches and scenic coastal walks.

The area is well-connected with public transport options, including bus routes and the North Walsham railway station, which provides direct links to Norwich and the surrounding areas. Alder Country Park itself offers a peaceful, rural setting with green spaces, making it an ideal choice for those looking to enjoy a quiet yet convenient lifestyle in the heart of Norfolk.

### Alder Country Park, Bacton Road

Set within Alder Country Park and framed by a leafy green backdrop, this elevated park home makes the most of its natural setting. The smart green exterior blends beautifully with the surroundings, while a short flight of steps leads you up to a raised decked entrance — a perfect introduction to the light-filled and thoughtfully laid-out interior.

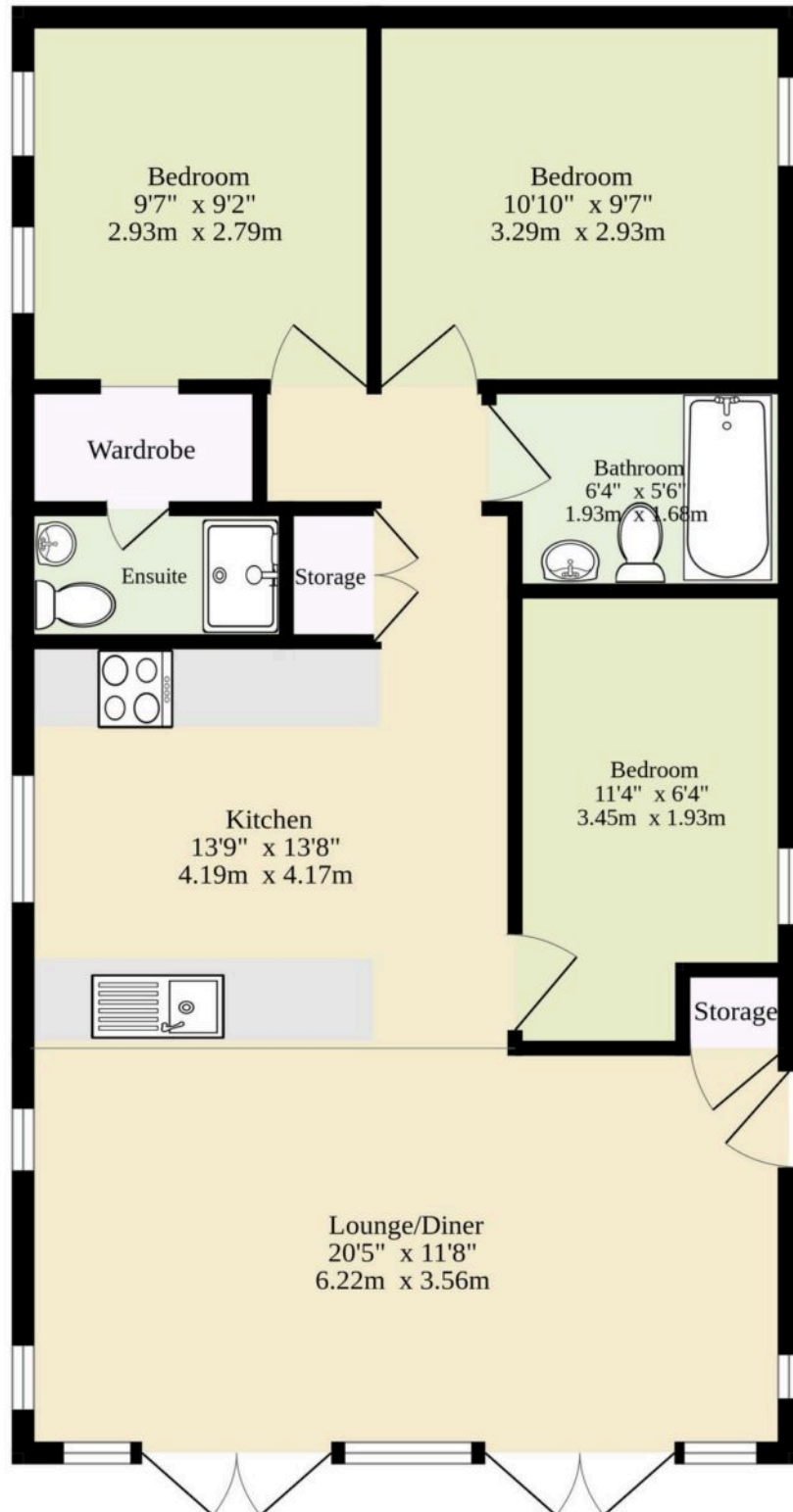
Step inside to an open plan arrangement that feels both relaxed and practical. The galley-style kitchen overlooks the main living space, making it easy to stay connected whether you're cooking or entertaining.

A gas hob, integrated sink, and generous built-in storage all add to the kitchen's functionality, while its clean lines and positioning help the space feel open and sociable.

The living area is bathed in natural light thanks to twin sets of patio doors that open directly onto a terraced deck — an ideal spot for outdoor dining or simply enjoying the surroundings. The combination of open flow and outdoor connection gives this home a



Ground Floor  
757 sq.ft. (70.3 sq.m.) approx.



TOTAL FLOOR AREA : 757 sq.ft. (70.3 sq.m.) approx.

Whilst every attempt has been made to ensure the accuracy of the floorplan contained here, measurements of doors, windows, rooms and any other items are approximate and no responsibility is taken for any error, omission or mis-statement. This plan is for illustrative purposes only and should be used as such by any prospective purchaser. The services, systems and appliances shown have not been tested and no guarantee as to their operability or efficiency can be given.

Made with Metropix ©2025

You can include any text here. The text can be modified upon generating your brochure.

You can include any text here. The text can be modified upon generating your brochure.

