



28 Whitehall Road, Norwich

£450,000 Freehold

Perfectly placed in Norwich's ever-desirable Golden Triangle, this beautifully finished terraced home captures the rhythm of modern living with touches of timeless charm throughout. The Victorian-style tiled approach sets the tone for a home that delivers soul, from the bay-fronted sitting room with open fireplace to the calm of the garden-facing dining space. The kitchen with herringbone floors, elegant cabinetry and built-in appliances creating a look that wouldn't feel out of place in a high-end interiors magazine. Upstairs, period fireplaces and a soundproofed main bedroom create spaces that are as restful as they are refined. The bathroom and WC have been reimagined with luxury in mind—freestanding bath and statement tiles delivering boutique hotel vibes. Step out into the landscaped garden and you'll find a sunlit, private space perfect for slow mornings and everything in between—this is a home designed not just to live in, but to love.

Perfectly placed in Norwich's ever-desirable Golden Triangle, this beautifully finished terraced home captures the rhythm of modern living with touches of timeless charm throughout. The Victorian-style tiled approach sets the tone for a home that delivers soul, from the bay-fronted sitting room with open fireplace to the calm of the garden-facing dining space. The kitchen with herringbone floors, elegant cabinetry and built-in appliances creating a look that wouldn't feel out of place in a high-end interiors magazine. Upstairs, period fireplaces and a soundproofed main bedroom create spaces that are as restful as they are refined. The bathroom and WC have been reimagined with luxury in mind—freestanding bath and statement tiles delivering boutique hotel vibes. Step out into the landscaped garden and you'll find a sunlit, private space perfect for slow mornings and everything in between—this is a home designed not just to live in, but to love.

The Location

Set in the vibrant heart of Norwich, Whitehall Road, NR2, boasts an enviable



Perfectly placed in Norwich's ever-desirable Golden Triangle, this beautifully finished terraced home captures the rhythm of modern living with touches of timeless charm throughout. The Victorian-style tiled approach sets the tone for a home that delivers soul, from the bay-fronted sitting room with open fireplace to the calm of the garden-facing dining space. The kitchen with herringbone floors, elegant cabinetry and built-in appliances creating a look that wouldn't feel out of place in a high-end interiors magazine. Upstairs, period



Perfectly placed in Norwich's ever-desirable Golden Triangle, this beautifully finished terraced home captures the rhythm of modern living with touches of timeless charm throughout. The Victorian-style tiled approach sets the tone for a home that delivers soul, from the bay-fronted sitting room with open fireplace to the calm of the garden-facing dining space. The kitchen with herringbone floors, elegant cabinetry and built-in appliances creating a look that wouldn't feel out of place in a high-end interiors magazine. Upstairs, period fireplaces and a soundproofed main bedroom create spaces that are as restful as they are refined. The bathroom and WC have been reimaged with luxury in mind—freestanding bath and statement tiles delivering boutique hotel vibes. Step out into the landscaped garden and you'll find a sunlit, private space perfect for slow mornings and everything in between—this is a home designed not just to live in, but to love.

The Location

Set in the vibrant heart of Norwich, Whitehall Road, NR2, boasts an enviable position within the much-admired Golden Triangle. Perfectly placed within walking distance of the city centre, this address offers the ideal balance of urban energy and everyday ease.

The area is well-served by local favourites such as the Georgian Townhouse and the whimsical Plantation Gardens—perfect for weekend strolls or relaxed afternoons. Excellent bus connections, including a nearby bus station, provide convenient links to Cambridge, London and beyond, while a variety of independent shops and everyday essentials are all close at hand, making this a truly dynamic and well-connected place to call home.

Whitehall Road, Norwich, NR2

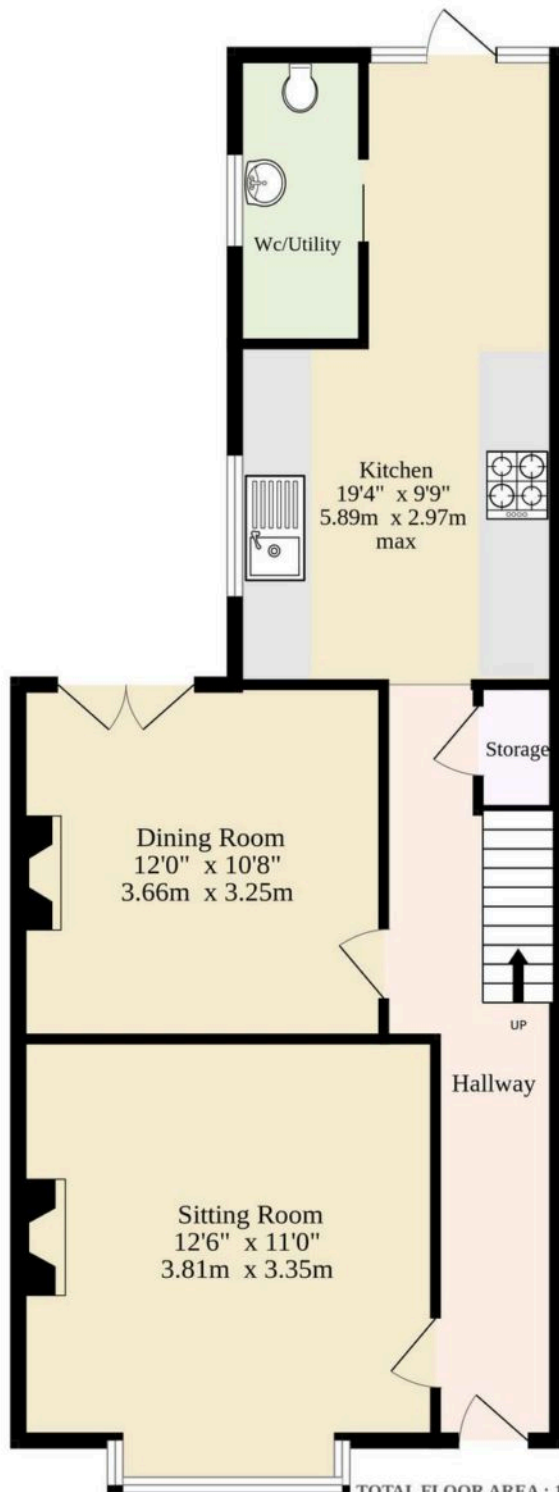
Welcome to this standout terraced home in the heart of the ever-sought-after Golden Triangle, where character meets considered design in all the right places. A charming bricked courtyard frontage welcomes you behind a sweet gate, setting the tone for what lies beyond.

The path to the front door is paved with Victorian-style tiles in rich terracotta and black—a classic nod to the home's period roots. Step inside and you're greeted by a rare find in terraced living: a hallway entrance that draws you straight into the soul of the property. The sitting room offers a bold yet balanced aesthetic, where a large bay window drenches the space in light, rose-detailed cornicing delicately frames the ceiling, and an open fireplace adds the kind of character money can't buy. This room has presence, and the colour palette chosen elevates it further, making it feel contemporary without compromising on charm.

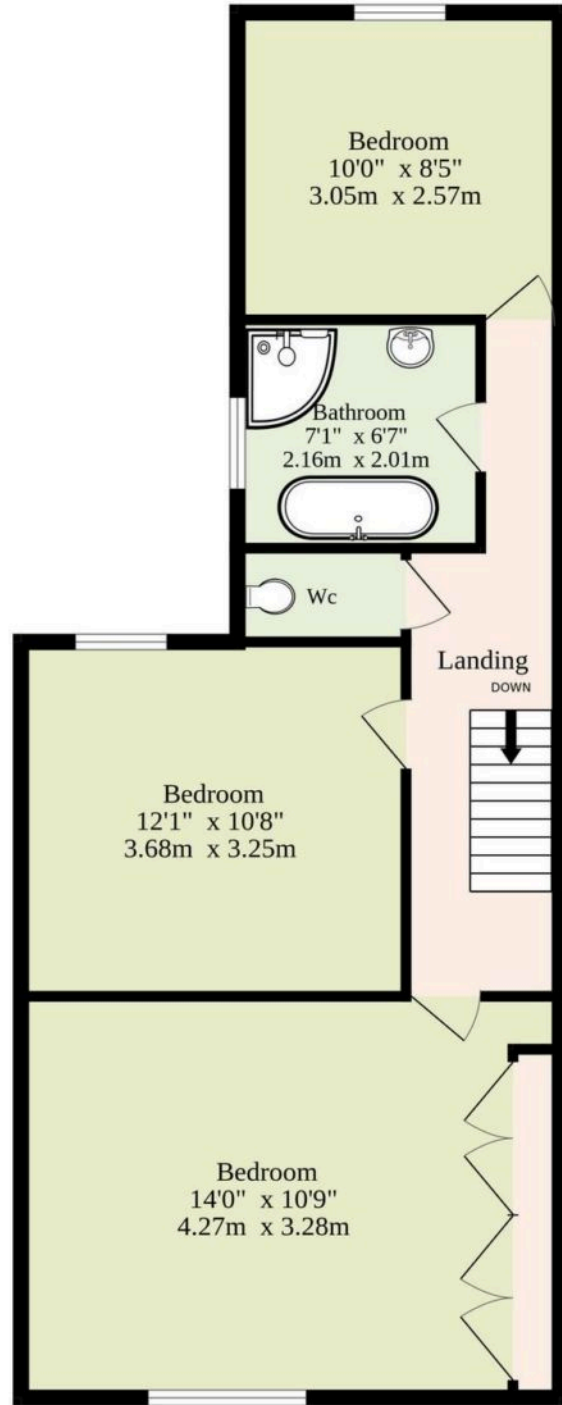


Sold Freehold

Ground Floor
543 sq.ft. (50.4 sq.m.) approx.



1st Floor
547 sq.ft. (50.8 sq.m.) approx.



TOTAL FLOOR AREA : 1090 sq.ft. (101.3 sq.m.) approx.

Whilst every attempt has been made to ensure the accuracy of the floorplan contained here, measurements of doors, windows, rooms and any other items are approximate and no responsibility is taken for any error, omission or mis-statement. This plan is for illustrative purposes only and should be used as such by any prospective purchaser. The services, systems and appliances shown have not been tested and no guarantee as to their operability or efficiency can be given.
Made with Metropix ©2025

You can include any text here. The text can be modified upon generating your brochure.

You can include any text here. The text can be modified upon generating your brochure.

