

849 Woodbridge Road, Ipswich

£330,000 Freehold

This spacious and character-filled home on Woodbridge Road offers the perfect merge of classic charm and easy everyday living. The open-plan sitting and dining area feels light and welcoming, with a beautiful cast iron fireplace and bay window adding warmth and style. A large kitchen with granite worktops, central island and plenty of storage makes family life and entertaining feel effortless, while the rear lobby leads straight out to the garden. Upstairs, three comfortable bedrooms include a master with its own ensuite, alongside a well-finished family bathroom. The generous garden is ideal for kids, pets and summer get-togethers, complete with a lovely summer house and handy outside WC and storage. Set in a relaxed, family-friendly part of town with great access to schools, green spaces and the town centre, it's a home that really ticks all the boxes.

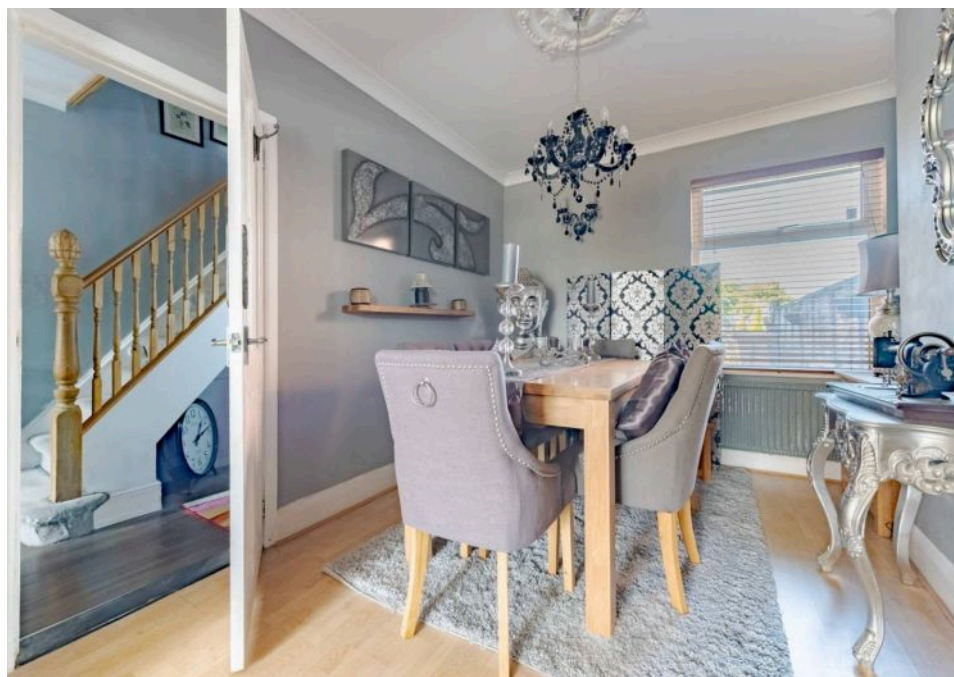
This spacious and character-filled home on Woodbridge Road offers the perfect merge of classic charm and easy everyday living. The open-plan sitting and dining area feels light and welcoming, with a beautiful cast iron fireplace and bay window adding warmth and style. A large kitchen with granite worktops, central island and plenty of storage makes family life and entertaining feel effortless, while the rear lobby leads straight out to the garden. Upstairs, three comfortable bedrooms include a master with its own ensuite, alongside a well-finished family bathroom. The generous garden is ideal for kids, pets and summer get-togethers, complete with a lovely summer house and handy outside WC and storage. Set in a relaxed, family-friendly part of town with great access to schools, green spaces and the town centre, it's a home that really ticks all the boxes.

The Location

Located on the well-regarded Woodbridge Road, sits within one of Ipswich's most established and family-friendly neighbourhoods. The area offers a



This spacious and character-filled home on Woodbridge Road offers the perfect merge of classic charm and easy everyday living. The open-plan sitting and dining area feels light and welcoming, with a beautiful cast iron fireplace and bay window adding warmth and style. A large kitchen with granite worktops, central island and plenty of storage makes family life and entertaining feel effortless, while the rear lobby leads straight out to the garden. Upstairs, three comfortable bedrooms include a master with its own ensuite, alongside a well-finished family bathroom. The



This spacious and character-filled home on Woodbridge Road offers the perfect merge of classic charm and easy everyday living. The open-plan sitting and dining area feels light and welcoming, with a beautiful cast iron fireplace and bay window adding warmth and style. A large kitchen with granite worktops, central island and plenty of storage makes family life and entertaining feel effortless, while the rear lobby leads straight out to the garden. Upstairs, three comfortable bedrooms include a master with its own ensuite, alongside a well-finished family bathroom. The generous garden is ideal for kids, pets and summer get-togethers, complete with a lovely summer house and handy outside WC and storage. Set in a relaxed, family-friendly part of town with great access to schools, green spaces and the town centre, it's a home that really ticks all the boxes.

The Location

Located on the well-regarded Woodbridge Road, sits within one of Ipswich's most established and family-friendly neighbourhoods. The area offers a relaxed and welcoming atmosphere, with a strong sense of community and convenient access to everything a growing household might need.

Local schools, parks and play areas are all within easy reach, while the vibrant town centre is just a short distance away, offering a mix of independent shops, everyday essentials and lively cafés.

Families will enjoy nearby green spaces perfect for weekend strolls, picnics and outdoor play, along with access to Ipswich's popular attractions, including its museum and bustling waterfront. The riverside area offers a variety of galleries, restaurants and scenic walking spots that bring a unique energy to the town.

With regular bus routes, easy road links and a setting that blends convenience with a laid-back feel, this location makes everyday living simple and enjoyable.

Woodbridge Road, Ipswich

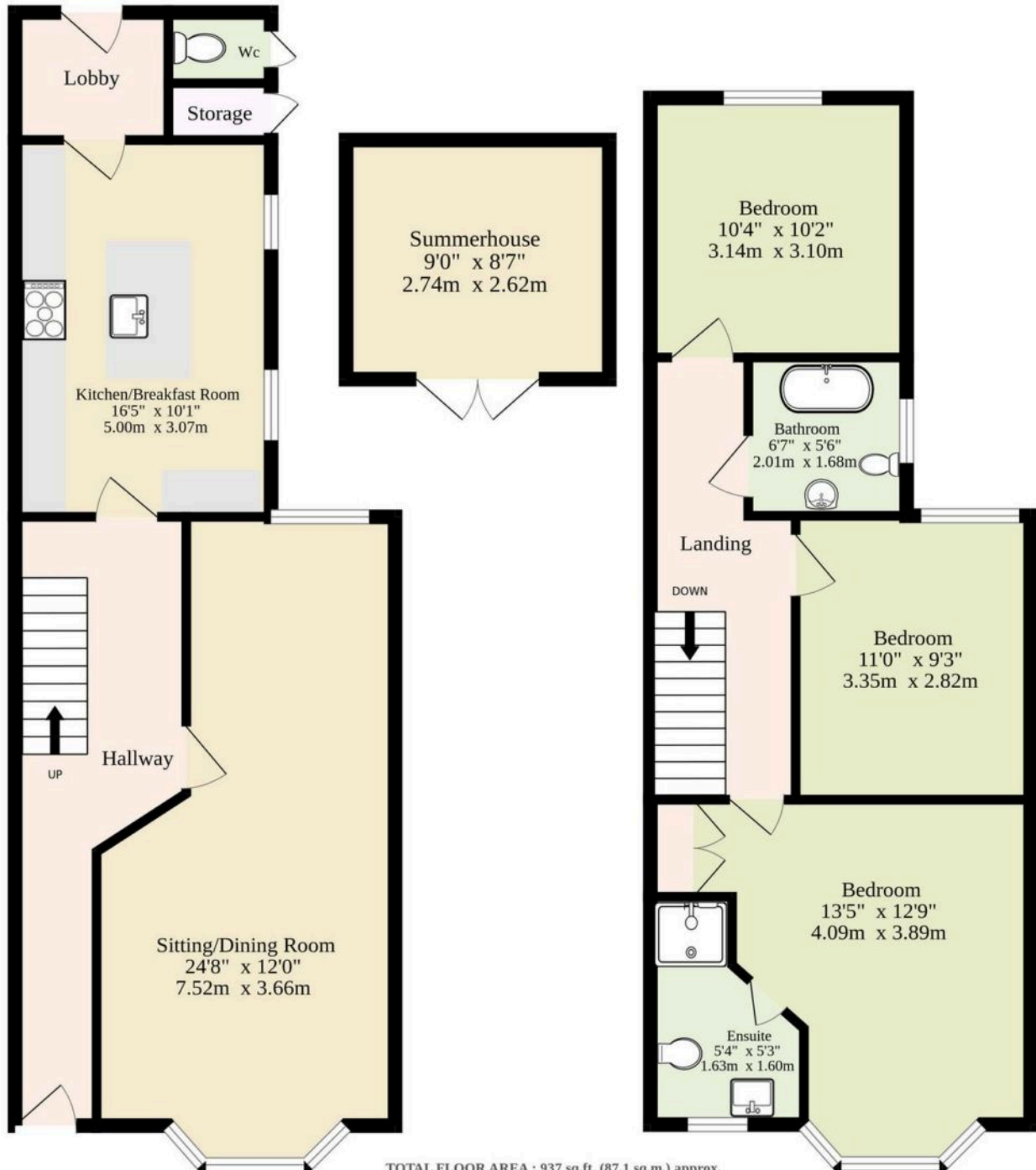
This beautifully characterful home in the heart of Ipswich combines charming original features with modern functionality, offering generous space across every level. A warm hallway entrance sets the tone, leading you through to a large open-plan sitting and dining area where the two spaces have been seamlessly connected.

The elegant cast iron fireplace becomes a stunning focal point, perfectly framed by a traditional bay window that floods the room with natural light and frames the street view with timeless appeal.



Ground Floor
494 sq.ft. (45.9 sq.m.) approx.

1st Floor
443 sq.ft. (41.2 sq.m.) approx.



TOTAL FLOOR AREA : 937 sq.ft. (87.1 sq.m.) approx.

Whilst every attempt has been made to ensure the accuracy of the floorplan contained here, measurements of doors, windows, rooms and any other items are approximate and no responsibility is taken for any error, omission or mis-statement. This plan is for illustrative purposes only and should be used as such by any prospective purchaser. The services, systems and appliances shown have not been tested and no guarantee as to their operability or efficiency can be given.
Made with Metropix ©2025

You can include any text here. The text can be modified upon generating your brochure.