



Ash Lodge, North Tuddenham

£425,000 Freehold

Located in the quiet village of North Tuddenham, this detached house sits behind a row of tall trees, offering privacy and a sense of seclusion. The property includes a double garage, a driveway with space for several cars, and a decent-sized garden. Inside, the house is spacious and practical. The entrance hall leads to several living areas, including a large sitting room with sliding doors to the garden, a kitchen/diner with modern fittings, a utility room, and a downstairs toilet. Two additional rooms on the ground floor can be used as a study, snug, or extra bedroom. Upstairs, there are three double bedrooms. The main bedroom has its own en-suite, while the other two share a shower room with a walk-in shower, toilet, and sink. The garden is well-kept and provides outdoor space for relaxing, entertaining, or gardening.

Council Tax band: E

Tenure: Freehold

Located in the quiet village of North Tuddenham, this detached house sits behind a row of tall trees, offering privacy and a sense of seclusion. The property includes a double garage, a driveway with space for several cars, and a generous size garden. Inside, the house is spacious and practical. The entrance hall leads to several living areas, including a large sitting room with sliding doors to the garden, a kitchen/diner with modern fittings, a utility room, and a downstairs toilet. Two additional rooms on the ground floor can be used as a study, snug, or extra bedroom. Upstairs, there are three double bedrooms. The main bedroom has its own en-suite, while the other two share a shower room. The garden is well-kept and provides outdoor space for relaxing, entertaining, or gardening.

Location

North Tuddenham is a small, picturesque village located in the county of Norfolk. It lies approximately 4 miles east of Dereham, offering convenient access to the larger town's shops, schools, and services while retaining a



Located in the quiet village of North Tuddenham, this detached house sits behind a row of tall trees, offering privacy and a sense of seclusion. The property includes a double garage, a driveway with space for several cars, and a generous size garden. Inside, the house is spacious and practical. The entrance hall leads to several living areas, including a large sitting room with sliding doors to the garden, a kitchen/diner with modern fittings, a utility room, and a downstairs toilet. Two additional rooms on the ground floor can be used as a study, snug, or extra bedroom. Upstairs



Located in the quiet village of North Tuddenham, this detached house sits behind a row of tall trees, offering privacy and a sense of seclusion. The property includes a double garage, a driveway with space for several cars, and a generous size garden. Inside, the house is spacious and practical. The entrance hall leads to several living areas, including a large sitting room with sliding doors to the garden, a kitchen/diner with modern fittings, a utility room, and a downstairs toilet. Two additional rooms on the ground floor can be used as a study, snug, or extra bedroom. Upstairs, there are three double bedrooms. The main bedroom has its own en-suite, while the other two share a shower room. The garden is well-kept and provides outdoor space for relaxing, entertaining, or gardening.

Location

North Tuddenham is a small, picturesque village located in the county of Norfolk. It lies approximately 4 miles east of Dereham, offering convenient access to the larger town's shops, schools, and services while retaining a peaceful, rural atmosphere. The village itself features a traditional pub, the popular Fox and Hounds, and a historic church, St. Mary's, known for its striking architecture and heritage. Surrounded by open countryside and farmland, North Tuddenham provides a beautiful setting with the benefit of good transport links via the A47, making it ideal for those seeking a quiet lifestyle within easy reach of local amenities and nearby towns.

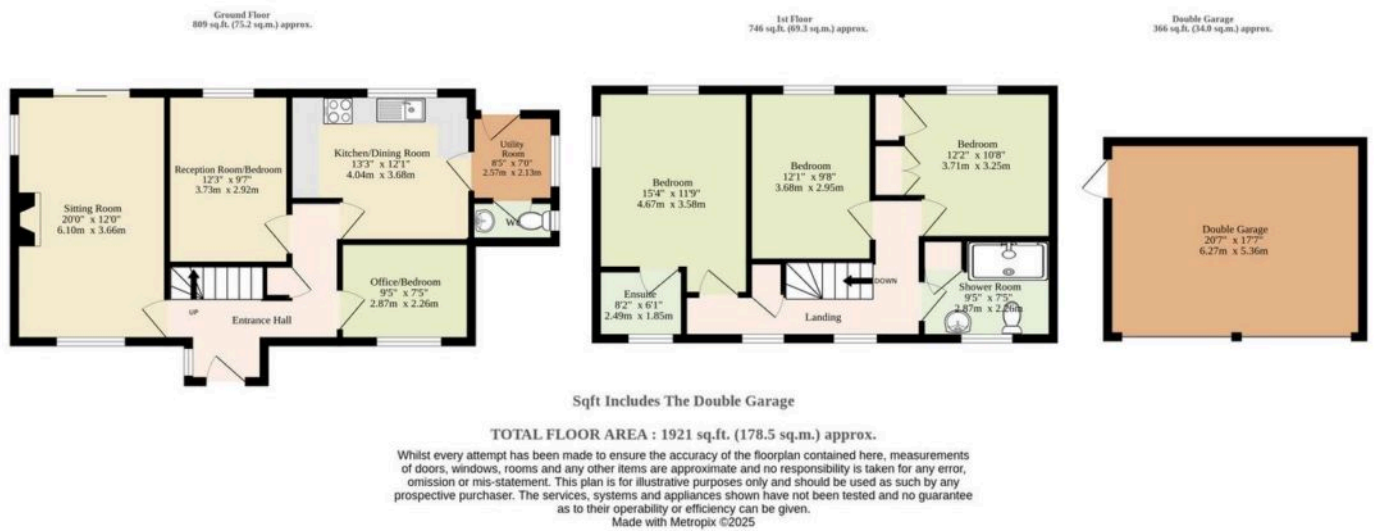
Ash Lodge

Set back behind a line of tall, mature trees, this home offers a good level of privacy and has real curb appeal. A wide driveway provides plenty of off-road parking and leads to a spacious double garage, perfect for keeping your car secure or using as extra storage or a workshop.

Inside, the house is well laid out and feels open and bright. The entrance hall is light and welcoming, giving a good first impression and easy access to the rest of the home. The layout is flexible, with several rooms that can be used to fit your lifestyle.

The sitting room is a bright and comfortable space, with large sliding doors that open straight onto the garden—great for enjoying the view or opening up the space in summer. The kitchen and dining area is modern and practical, fitted with sleek cabinets, integrated appliances, and lots of counter space for cooking. Next to it is a useful utility room and a ground-floor WC, which adds convenience for busy households.





You can include any text here. The text can be modified upon generating your brochure.

You can include any text here. The text can be modified upon generating your brochure.

