



Boogaloo The Drift, Lyng

Guide Price £325,000

Boogaloo The Drift

Lyng, Norwich

Guide Price £325,000 - £350,000. Set in the postcard-perfect village of Lyng, The Drift is a soulful Georgian cottage that marries rustic charm with considered comfort. With four bedrooms, two four-piece bathrooms, and a rich tapestry of original features—wooden beams, pamment floors, and a glowing log burner—it's a home that feels both generous and grounding. The heart of the house is a characterful country kitchen, made for slow mornings and gatherings that stretch into the evening. Outside, a beautifully curated garden offers a private retreat, where flowers climb brick pillars and sunlight lingers on the patio. Just a short stroll from the much-loved Fox at Lyng and surrounded by open countryside, the setting is idyllic yet practical—with Norwich and the Norfolk coast both within easy reach. Life here flows at a gentler pace—authentic, rooted, and quietly joyful.

Council Tax band: C

Tenure: Freehold





Boogaloo The Drift

Lyng, Norwich

Guide Price £325,000 - £350,000. Set in the postcard-perfect village of Lyng, The Drift is a soulful Georgian cottage that marries rustic charm with considered comfort. With four bedrooms, two four-piece bathrooms, and a rich tapestry of original features—wooden beams, pamment floors, and a glowing log burner—it's a home that feels both generous and grounding. The heart of the house is a characterful country kitchen, made for slow mornings and gatherings that stretch into the evening. Outside, a beautifully curated garden offers a private retreat, where flowers climb brick pillars and sunlight lingers on the patio. Just a short stroll from the much-loved Fox at Lyng and surrounded by open countryside, the setting is idyllic yet practical—with Norwich and the Norfolk coast both within easy reach. Life here flows at a gentler pace—authentic, rooted, and quietly joyful.

The Location

Heath Road in Lyng offers a beautifully balanced lifestyle—rural, peaceful, and picturesque, yet effortlessly connected. This charming village is surrounded by expansive countryside and scenic walking routes, ideal for anyone who loves the outdoors, whether that means weekend rambles, bike rides, or simply soaking in the sounds of nature.

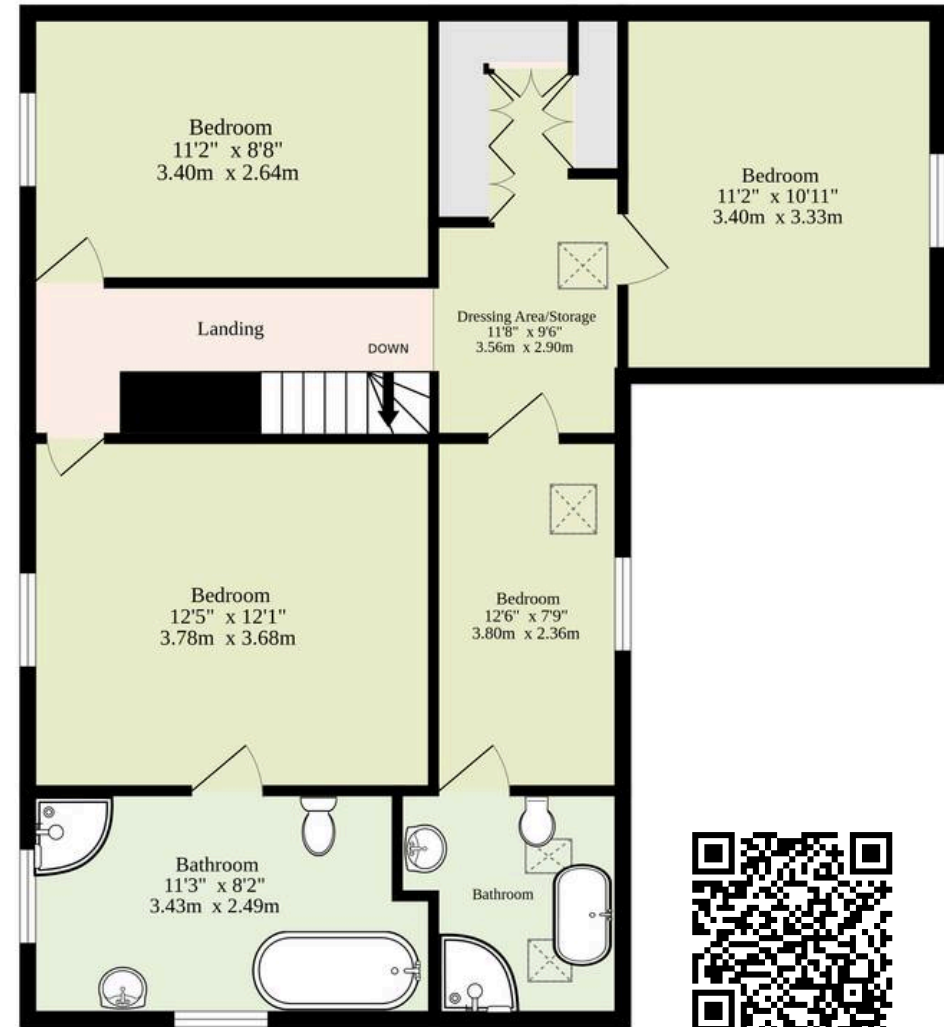
Just a 20-minute drive from the vibrant city of Norwich, and around 30 minutes from the stunning Norfolk coast, it's perfectly placed for both work and leisure. Excellent road links make commuting or spontaneous coastal escapes refreshingly easy.



Ground Floor
916 sq.ft. (85.1 sq.m.) approx.



1st Floor
757 sq.ft. (70.3 sq.m.) approx.



TOTAL FLOOR AREA : 1673 sq.ft. (155.4 sq.m.) approx.

Whilst every attempt has been made to ensure the accuracy of the floorplan contained here, measurements of doors, windows, rooms and any other items are approximate and no responsibility is taken for any error, omission or mis-statement. This plan is for illustrative purposes only and should be used as such by any prospective purchaser. The services, systems and appliances shown have not been tested and no guarantee as to their operability or efficiency can be given.
Made with Metropix ©2025