



3 Mill Road, Reedham  
£280,000



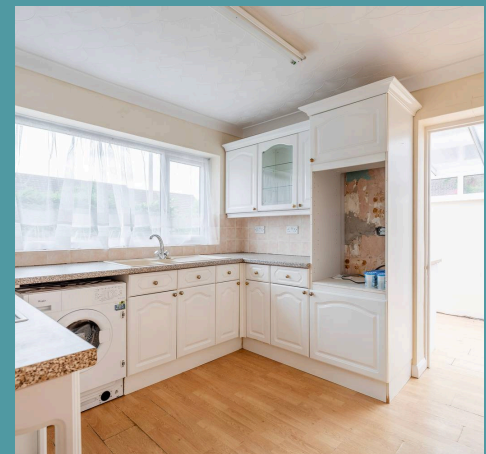
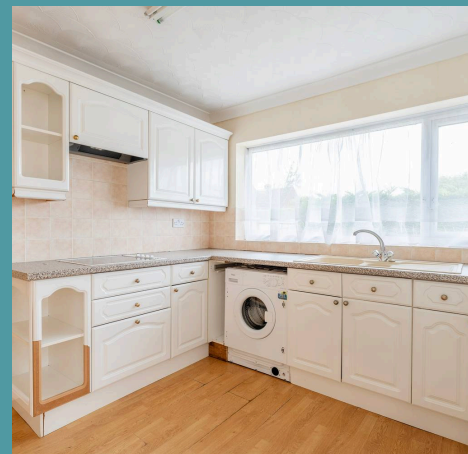
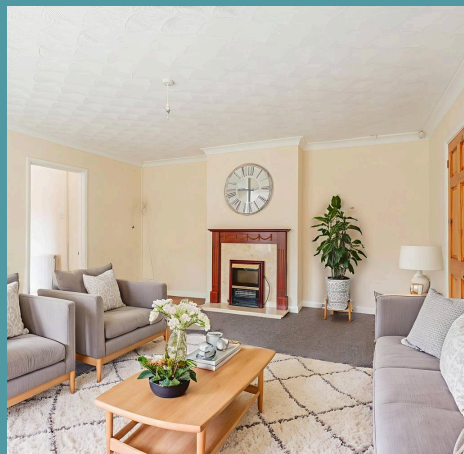
# 3 Mill Road

Reedham, Norwich

Situated in the peaceful village of Reedham, this spacious three-bedroom bungalow presents an ideal opportunity for those seeking single-storey living in a picturesque rural setting. Set back from the road with its own driveway and garage, the property offers privacy and practicality. Inside, the well-proportioned layout includes a bright sitting room with patio doors to the garden, a functional kitchen with utility room and a generous hallway connecting three comfortable bedrooms. A four-piece family bathroom adds further convenience, while the large, low-maintenance garden provides outdoor space with plenty of potential. Though well maintained, the property would now benefit from some modern updates—offering a perfect canvas to personalise. With scenic walks, local pubs, and Reedham's train station all nearby, this home combines countryside charm with everyday ease.

Council Tax band: C

Tenure: Freehold







## 3 Mill Road

Reedham, Norwich

Situated in the peaceful village of Reedham, this spacious three-bedroom bungalow presents an ideal opportunity for those seeking single-storey living in a picturesque rural setting. Set back from the road with its own driveway and garage, the property offers privacy and practicality. Inside, the well-proportioned layout includes a bright sitting room with patio doors to the garden, a functional kitchen with utility room and a generous hallway connecting three comfortable bedrooms. A four-piece family bathroom adds further convenience, while the large, low-maintenance garden provides outdoor space with plenty of potential. Though well maintained, the property would now benefit from some modern updates—offering a perfect canvas to personalise. With scenic walks, local pubs, and Reedham's train station all nearby, this home combines countryside charm with everyday ease.



### The Location

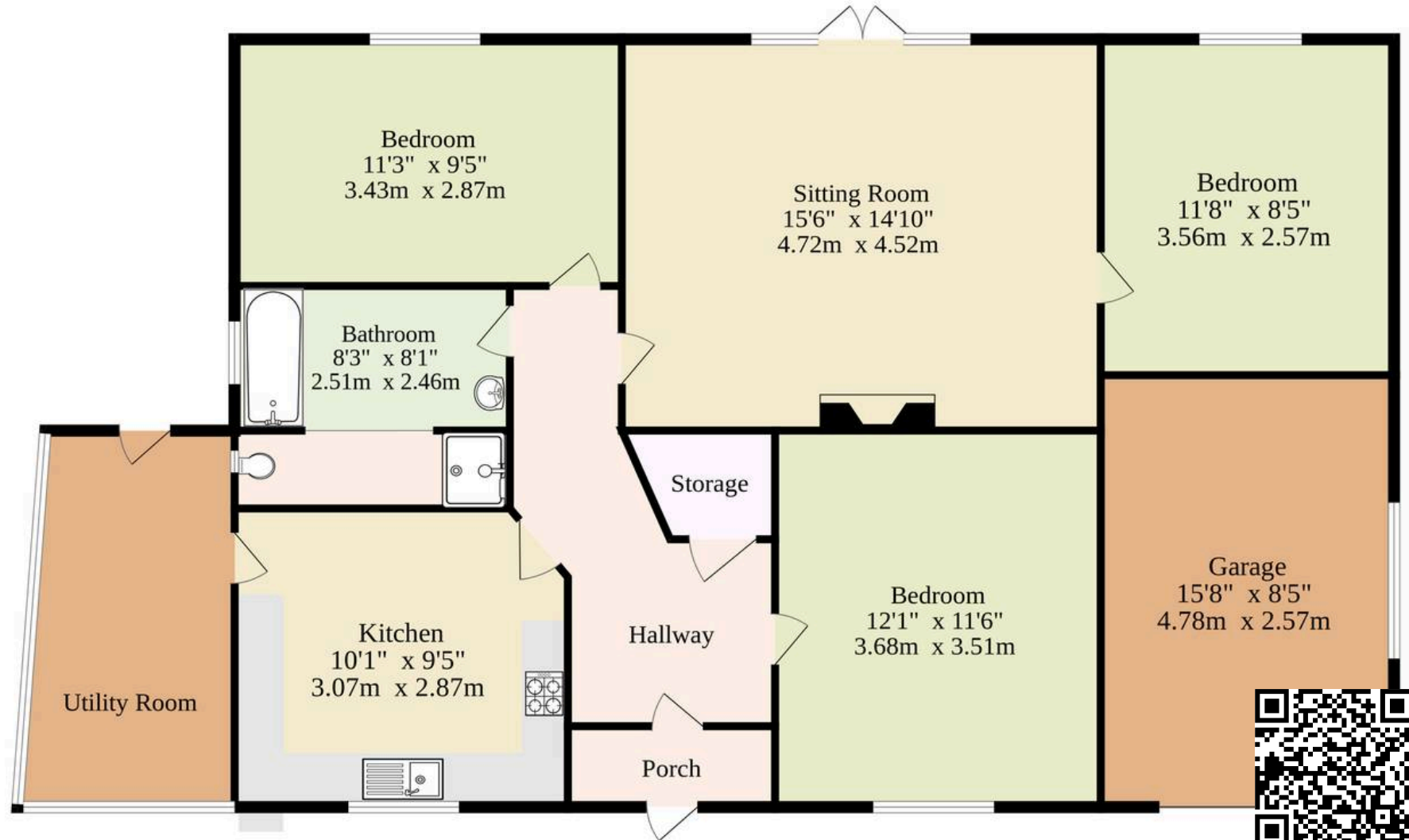
Mill Road in Reedham offers a peaceful village setting surrounded by the natural beauty of the Norfolk Broads. This charming rural location is ideal for those seeking a quieter pace of life, with picturesque countryside walks and river views close by.

Reedham itself features a train station with direct links to Norwich and Lowestoft, a well-regarded primary school, and a selection of local pubs and shops, creating a welcoming and convenient community.

The nearby River Yare provides opportunities for boating and wildlife spotting, while the village is



**Ground Floor**  
**1069 sq.ft. (99.3 sq.m.) approx.**



**TOTAL FLOOR AREA : 1069 sq.ft. (99.3 sq.m.) approx.**

Whilst every attempt has been made to ensure the accuracy of the floorplan contained here, measurements of doors, windows, rooms and any other items are approximate and no responsibility is taken for any error, omission or mis-statement. This plan is for illustrative purposes only and should be used as such by any prospective purchaser. The services, systems and appliances shown have not been tested and no guarantee as to their operability or efficiency can be given.

Made with Metropix ©2025