



2 Barrack Close, East Tuddenham
£425,000

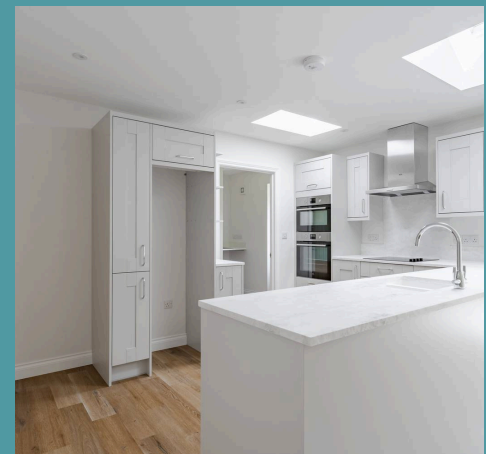
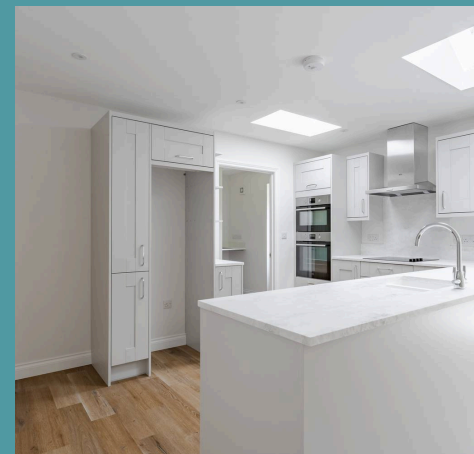
2 Barrack Close

East Tuddenham, Dereham

Built by the well-regarded local developers Walnut Farm Developments, this stylish three-bedroom detached bungalow showcases a high-end finish, modern comforts, and thoughtful energy-efficient design. With a strong reputation for quality homes across the Breckland area, Walnut Farm Developments have delivered another standout property, complete with a 10-year NHBC warranty for added peace of mind.

Council Tax band: TBD

Tenure: Freehold





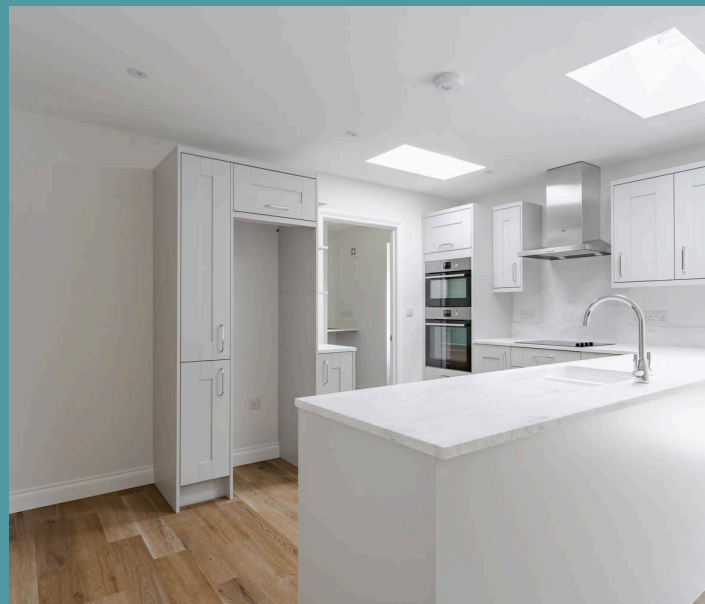
2 Barrack Close

East Tuddenham, Dereham

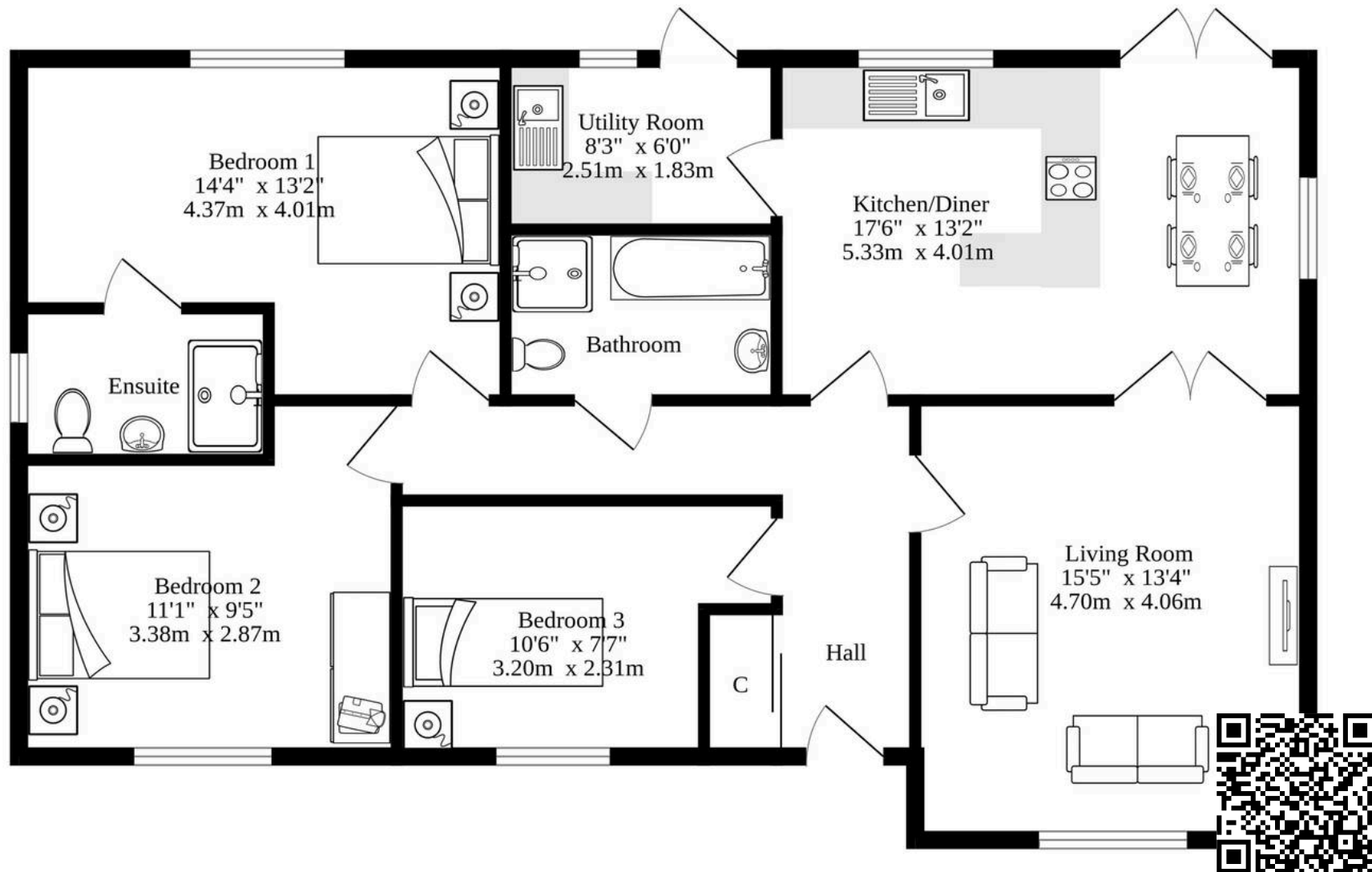
Built by the well-regarded local developers Walnut Farm Developments, this stylish three-bedroom detached bungalow showcases a high-end finish, modern comforts, and thoughtful energy-efficient design. With a strong reputation for quality homes across the Breckland area, Walnut Farm Developments have delivered another standout property, complete with a 10-year NHBC warranty for added peace of mind as well as a 2-year comprehensive builder's warranty.

Location

Barrack Close is positioned in a quiet cul-de-sac within the rural village of East Tuddenham, surrounded by attractive countryside while offering easy access to nearby towns. The village enjoys a strong sense of community, with an active village hall that hosts local events and groups throughout the year. The neighbouring village of Mattishall, just over three miles away, offers a range of useful amenities including shops, a pub, post office, and doctor's surgery. East Tuddenham is ideally placed just off the A47, providing excellent road connections to both Norwich and Dereham, and is served by regular bus routes to both towns. Less than a mile from East Tuddenham lies the renowned Honningham Goat Shed, a popular destination offering a farm shop, deli, and cafe. Residents can also enjoy a variety of scenic walking routes and bridleways in the area, making it a popular choice for walkers, cyclists, and horse riders. This peaceful yet accessible setting makes East Tuddenham an appealing place to call home for those seeking rural living with practical links.



Ground Floor



Whilst every attempt has been made to ensure the accuracy of the floorplan contained here, measurements of doors, windows, rooms and any other items are approximate and no responsibility is taken for any error, omission or mis-statement. This plan is for illustrative purposes only and should be used as such by any prospective purchaser. The services, systems and appliances shown have not been tested and no guarantee as to their operability or efficiency can be given.
Made with Metropix ©2025