



18 Long Street, Great Ellingham

Attleborough

Minor & Brady



£575,000

Minors & Brady

18 Long Street

Great Ellingham, Attleborough

This beautiful detached family home in Great Ellingham offers a wonderful mix of character and modern living, perfect for a growing family or anyone who loves flexible space. The open-plan kitchen and dining area flows seamlessly into a bright orangery, creating a warm and inviting spot to relax or entertain. There's also a handy family room and a stylish wet room on the ground floor, adding practicality without sacrificing charm. The self-contained annexe is a fantastic asset—perfect for guests, a home office, or as a rental opportunity, with approved planning and potential to generate £700pcm or more in the current market. Upstairs, four good-sized bedrooms, including a master with a dressing room and en-suite, provide plenty of space and comfort for everyone. Outside, the large garden with mature fruit trees and a patio is perfect for enjoying peaceful afternoons and family get-togethers, making this home a truly special place to live.

- Generously sized detached chalet offering flexible and spacious accommodation across two floors, ideal for growing families
- Self-contained annexe with kitchenette and wet room, offering approved rental use with £700pcm income potential
- Bright and airy open-plan kitchen and dining area, fitted with high-quality units, integrated appliances, and plenty of room for family meals
- Stunning orangery adjoining the lounge, flooded with natural light through large windows and a feature skylight, creating a perfect spot to unwind
- Additional versatile reception room on the ground floor, easily used as a family room, guest bedroom, or hobby space, providing great flexibility
- Four generously proportioned bedrooms on the first floor, including a master suite featuring its own dressing room and modern en-suite shower room





M&B

Minors & Brady

18 Long Street

Great Ellingham, Attleborough

Council Tax band: F

Tenure: Freehold

EPC Energy Efficiency Rating: C

EPC Environmental Impact Rating:



M&B

18 Long Street

Great Ellingham, Attleborough

This beautiful detached family home in Great Ellingham offers a wonderful mix of character and modern living, perfect for a growing family or anyone who loves flexible space. The open-plan kitchen and dining area flows seamlessly into a bright orangery, creating a warm and inviting spot to relax or entertain. There's also a handy family room and a stylish wet room on the ground floor, adding practicality without sacrificing charm. The self-contained annexe is a fantastic asset—perfect for guests, a home office, or as a rental opportunity, with approved planning and potential to generate £700pcm or more in the current market. Upstairs, four good-sized bedrooms, including a master with a dressing room and en-suite, provide plenty of space and comfort for everyone. Outside, the large garden with mature fruit trees and a patio is perfect for enjoying peaceful afternoons and family get-togethers, making this home a truly special place to live.

The Location

Great Ellingham is a charming and welcoming village nestled in the heart of Norfolk, known for its beautiful countryside and strong community spirit. With its rich history, including stunning old buildings like the 15th-century windmill and the historic St. James' Church, the village has a lovely, timeless feel.

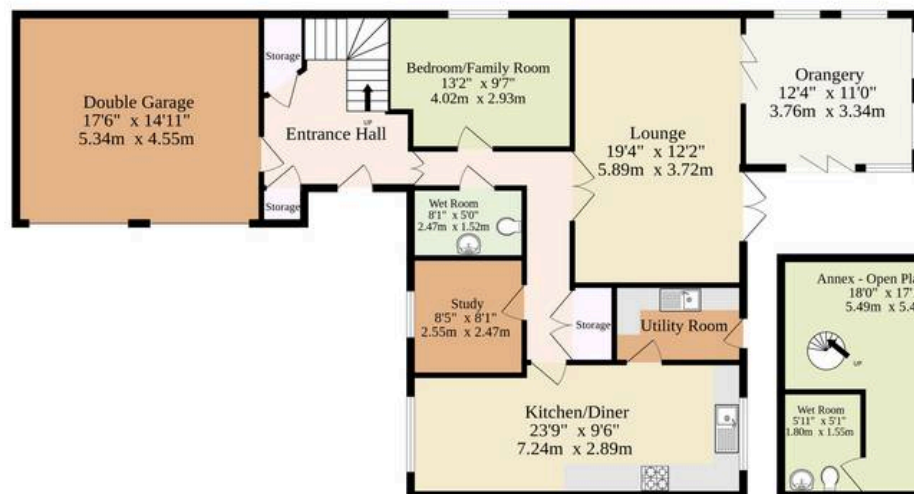
It's a place where neighbors come together for fun events like the annual Teddy Bear Festival, creating a warm and friendly atmosphere for families and visitors alike.

The village has everything you need close by — a primary school, local shops, a cosy pub, and essential services — making everyday life easy and convenient. For those looking to explore further or commute, nearby towns and cities are just a short drive away, with good road links to Norwich and Cambridge.

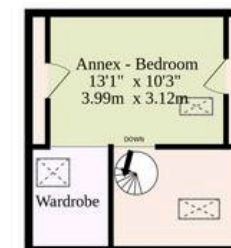
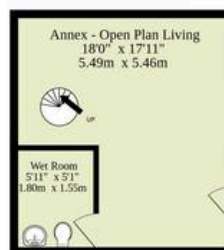
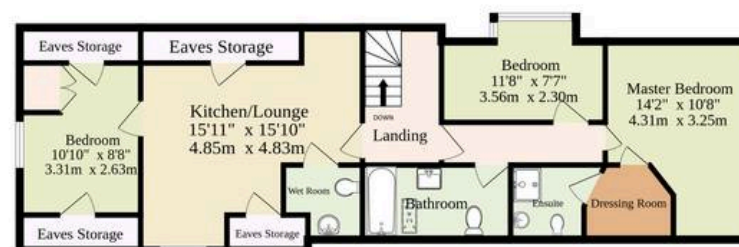
Surrounded by scenic walking and cycling paths, Great



Ground Floor
1512 sq.ft. (140.5 sq.m.) approx.



1st Floor
1184 sq.ft. (110.0 sq.m.) approx.



TOTAL FLOOR AREA : 2696 sq.ft. (250.5 sq.m.) approx.

Whilst every attempt has been made to ensure the accuracy of the floorplan contained here, measurements of doors, windows, rooms and any other items are approximate and no responsibility is taken for any error, omission or mis-statement. This plan is for illustrative purposes only and should be used as such by any prospective purchaser. The services, systems and appliances shown have not been tested and no guarantee as to their operability or efficiency can be given.

Made with Metropix ©2025

Dreaming of this home? Let's make it a reality



Meet Callum
Senior Property Consultant



Meet Ayesgul
Aftersales Progressor



Meet Marlo
Senior Property Valuer

Minors & Brady
Your home, our market



dereham@minorsandbrady.co.uk



01362 700820



9a Market Place, Dereham, NR19 2AW

CAISTER-ON-SEA | DEREHAM | DISS | NORWICH | OULTON BROAD | WROXHAM



How can we support

- ✓ Residential Mortgages
- ✓ Protection & Insurance
- ✓ Buy-to-let (personal and limited company)



Matt Waters
Senior Mortgage
and Protection Advisor



Victoria Payne
Mortgage and
Protection Advisor

Scan to book your
appointment today



T: 01692 531372
E: enquiries@norfolk-mortgages.co.uk