



Petra Post Office Road, Little Plumstead  
£400,000



# Petra Post Office Road

Little Plumstead, Norwich

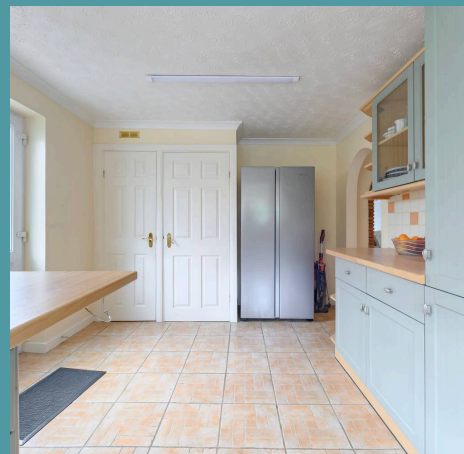
Set well back from the road in the peaceful village of Little Plumstead, Petra is an extended detached bungalow offering laid-back living with plenty of space both inside and out. With three generous bedrooms and bright, flowing interiors, this is a home designed for comfort, connection, and ease. The modern kitchen/breakfast room, cosy lounge, and heated conservatory create inviting spaces for everyday life or entertaining, all overlooking a beautifully kept private garden. A long driveway, car port, and detached garage add real practicality, with room for hobbies, storage, or just extra breathing space. Tucked into a friendly village with excellent local links and just a short drive to Norwich and the coast, this home combines rural calm with everyday convenience. For those looking for something move-in ready with character, charm, and flexibility, Petra has it all.

Council Tax band: D

Tenure: Freehold

EPC Energy Efficiency Rating: D

EPC Environmental Impact Rating: D







## Petra Post Office Road

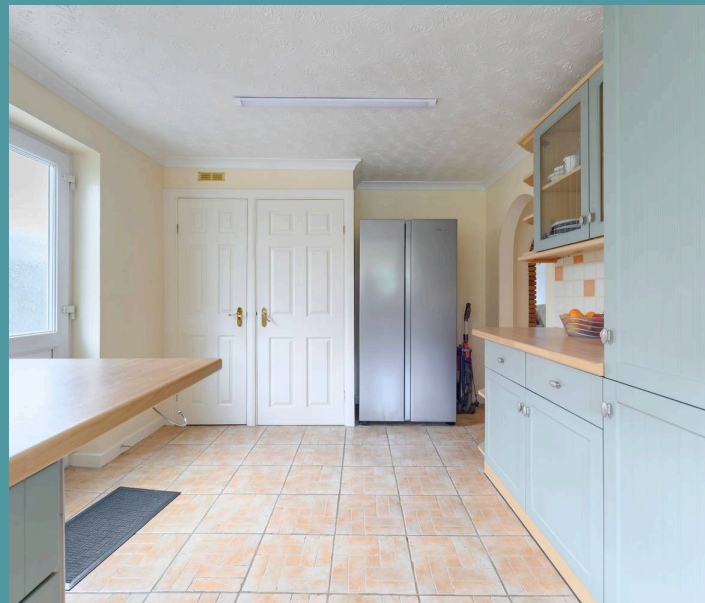
### Little Plumstead, Norwich

Set well back from the road in the peaceful village of Little Plumstead, Petra is an extended detached bungalow offering laid-back living with plenty of space both inside and out. With three generous bedrooms and bright, flowing interiors, this is a home designed for comfort, connection, and ease. The modern kitchen/breakfast room, cosy lounge, and heated conservatory create inviting spaces for everyday life or entertaining, all overlooking a beautifully kept private garden. A long driveway, car port, and detached garage add real practicality, with room for hobbies, storage, or just extra breathing space. Tucked into a friendly village with excellent local links and just a short drive to Norwich and the coast, this home combines rural calm with everyday convenience. For those looking for something move-in ready with character, charm, and flexibility, Petra has it all.

### The Location

Post Office Road in Little Plumstead offers a peaceful yet well-connected lifestyle that's hard to beat. Surrounded by beautiful countryside and with The Broads National Park right on the doorstep, it's a spot that really comes into its own if you enjoy walking, cycling, or simply soaking up nature at a gentler pace.

The village itself has a lovely sense of community and feels quietly tucked away, but you're never far from the essentials. Families will find well-regarded local schools nearby, along with playgrounds and green spaces perfect for weekend adventures with the kids. It's a setting that balances rural calm with real convenience.





**Ground Floor**  
**1202 sq.ft. (111.7 sq.m.) approx.**



**TOTAL FLOOR AREA : 1202 sq.ft. (111.7 sq.m.) approx.**

Whilst every attempt has been made to ensure the accuracy of the floorplan contained here, measurements of doors, windows, rooms and any other items are approximate and no responsibility is taken for any error, omission or mis-statement. This plan is for illustrative purposes only and should be used as such by any prospective purchaser. The services, systems and appliances shown have not been tested and no guarantee as to their operability or efficiency can be given.  
Made with Metropix ©2025