



The Fynn, Grundisburgh Vale, Grundisburgh

Grundisburgh



£390,000
Minors & Brady

The Fynn, Grundisburgh Vale

Grundisburgh

Beautifully designed 3-bed semi-detached home in Grundisburgh Vale. Classic charm, modern convenience. Ideal for family living in sought-after Suffolk village. Close to amenities, scenic surrounds. High-quality finishes, east-facing garden, garage, 10-year warranty.

- Well-designed newly built family home in a sought-after village setting
- 10 years Builders Warranty
- Contemporary kitchen/dining room with double doors opening to the rear garden
- Generous lounge with ample natural light and space to relax
- Ground floor WC and useful under-stairs storage
- Spacious principal bedroom with built-in wardrobes and en-suite shower room
- Two additional well-proportioned bedrooms, ideal for family or home office use
- South-east facing rear garden offering a secure outdoor space
- Attached garage with door opening to garden and driveway parking
- Located in the desirable village of Grundisburgh, with countryside surroundings and easy access to Woodbridge and Ipswich





M&B

The Fynn, Grundisburgh Vale

Grundisburgh

Council Tax band: TBD

Tenure: Freehold



M&B

The Fynn, Grundisburgh Vale

Grundisburgh

‘The Fynn’ is a beautifully designed three-bedroom semi-detached home, positioned within the sought-after Grundisburgh Vale development by renowned builders Hopkins Homes. This thoughtfully constructed property combines classic charm with modern convenience, offering a superb standard of living in the heart of one of Suffolk’s most attractive villages. With a well-proportioned layout, high-quality finishes throughout, and an east-facing garden ideal for morning light and outdoor enjoyment, this home is perfectly suited to contemporary family life.

Location

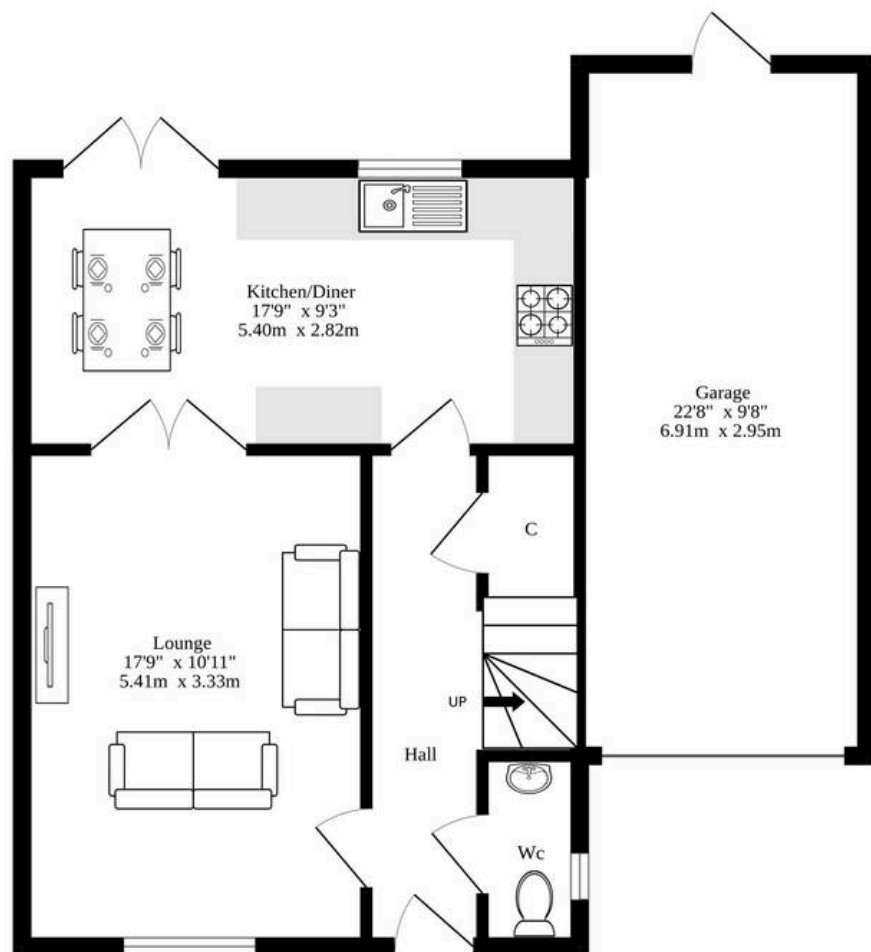
Grundisburgh Vale enjoys a prime position on the edge of the popular village of Grundisburgh, offering a peaceful residential setting with excellent connectivity. The village itself is known for its strong sense of community, well-regarded primary school, and charming amenities including a local shop, pub, and bakery. Surrounded by scenic Suffolk countryside, residents benefit from easy access to walking routes and green spaces, while still being just a short drive from the vibrant market town of Woodbridge and the county town of Ipswich. With its blend of rural appeal and everyday convenience, Grundisburgh Vale provides an ideal base for families, professionals, and those seeking a relaxed village lifestyle without compromising on access to key amenities and transport links.

Grundisburgh Vale

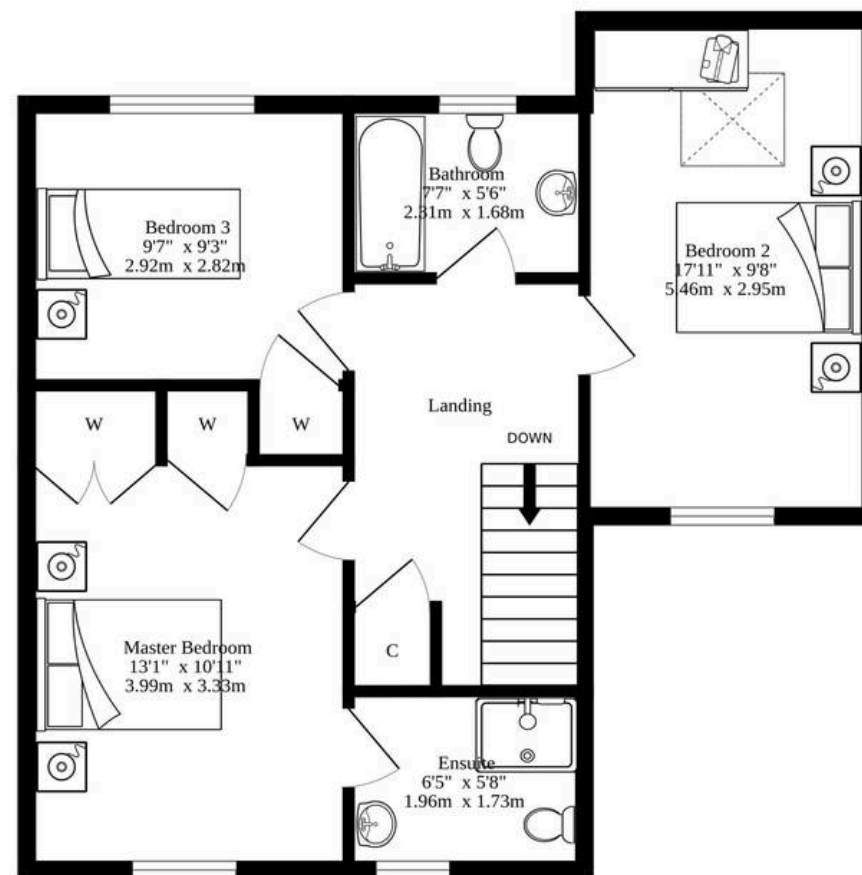
Set in the heart of Grundisburgh, ‘The Fynn’ offers a peaceful village setting with easy access to everyday amenities, ideal for families looking for both comfort and convenience. Thoughtfully designed, this newly built home combines smart, modern finishes with a practical layout that suits contemporary living.



Ground Floor
642 sq.ft. (59.6 sq.m.) approx.



1st Floor
542 sq.ft. (50.4 sq.m.) approx.



TOTAL FLOOR AREA : 1184 sq.ft. (110.0 sq.m.) approx.

Whilst every attempt has been made to ensure the accuracy of the floorplan contained here, measurements of doors, windows, rooms and any other items are approximate and no responsibility is taken for any error, omission or mis-statement. This plan is for illustrative purposes only and should be used as such by any prospective purchaser. The services, systems and appliances shown have not been tested and no guarantee as to their operability or efficiency can be given.
Made with Metropix ©2025

Dreaming of this home? Let's make it a reality



Meet *Nicola*
Branch Manager



Meet *Theo*
Property Consultant



Meet *Anya*
Aftersales Progressor

Minors & Brady
Your home, our market

 diss@minorsandbrady.co.uk

 01379 771444

 46-47 Mere Street, Diss, IP22 4AG

CAISTER-ON-SEA | DEREHAM | DISS | NORWICH | OULTON BROAD | WROXHAM



How can we support

- ✓ Residential Mortgages
- ✓ Protection & Insurance
- ✓ Buy-to-let (personal and limited company)



Matt Waters
Senior Mortgage
and Protection Advisor



Victoria Payne
Mortgage and
Protection Advisor

Scan to book your
appointment today



T: 01692 531372
E: enquiries@norfolk-mortgages.co.uk