



Plot 37 Sarsons Meadow, Hopton

Hopton



£570,000  
Minors & Brady

# Plot 37 Sarsons Meadow

## Hopton

Sarsons Meadow has been designed to include a mixture of homes, from two-bedroom through to five-bedroom properties, to accommodate first-time buyers, families, and those looking for a home to enjoy their retirement. Footpaths surround Sarsons Meadow to the picturesque open countryside and link back to the village, with green open space situated in the heart of the development. Minors and Brady are pleased to be accepting reservations at Sarsons Meadow on current and future phases.

- Sarsons Meadow offers a selection of bespoke homes ranging from two to five bedrooms, meticulously designed for comfort and individual lifestyle needs
- The development incorporates traditional East Anglian architectural elements, including timber windows, Suffolk-style barges, and local handpicked flint detailing for timeless charm
- This property features handcrafted kitchens with quartz worktops, integrated appliances, and bespoke joinery accents, emphasizing luxury and practicality
- Internal features include oak doors, flooring throughout and heritage wall colours, creating an elegant, cohesive aesthetic throughout
- Spacious master bedrooms are complemented by private en-suites
- Modern bathrooms and en-suites showcase designer sanitaryware, clear glass enclosures, and plush ceramic tiles, assuring a sleek, luxurious finish
- Smart electrical systems deliver ultrafast broadband, a comprehensive network of sockets, modern lighting fittings, and mains wired smoke alarms for safety and connectivity
- External spaces boast extensive patios, a private driveway and garaging
- All properties benefit from a comprehensive 10-year structural warranty, with rigorous inspections ensuring the highest standards of quality and durability



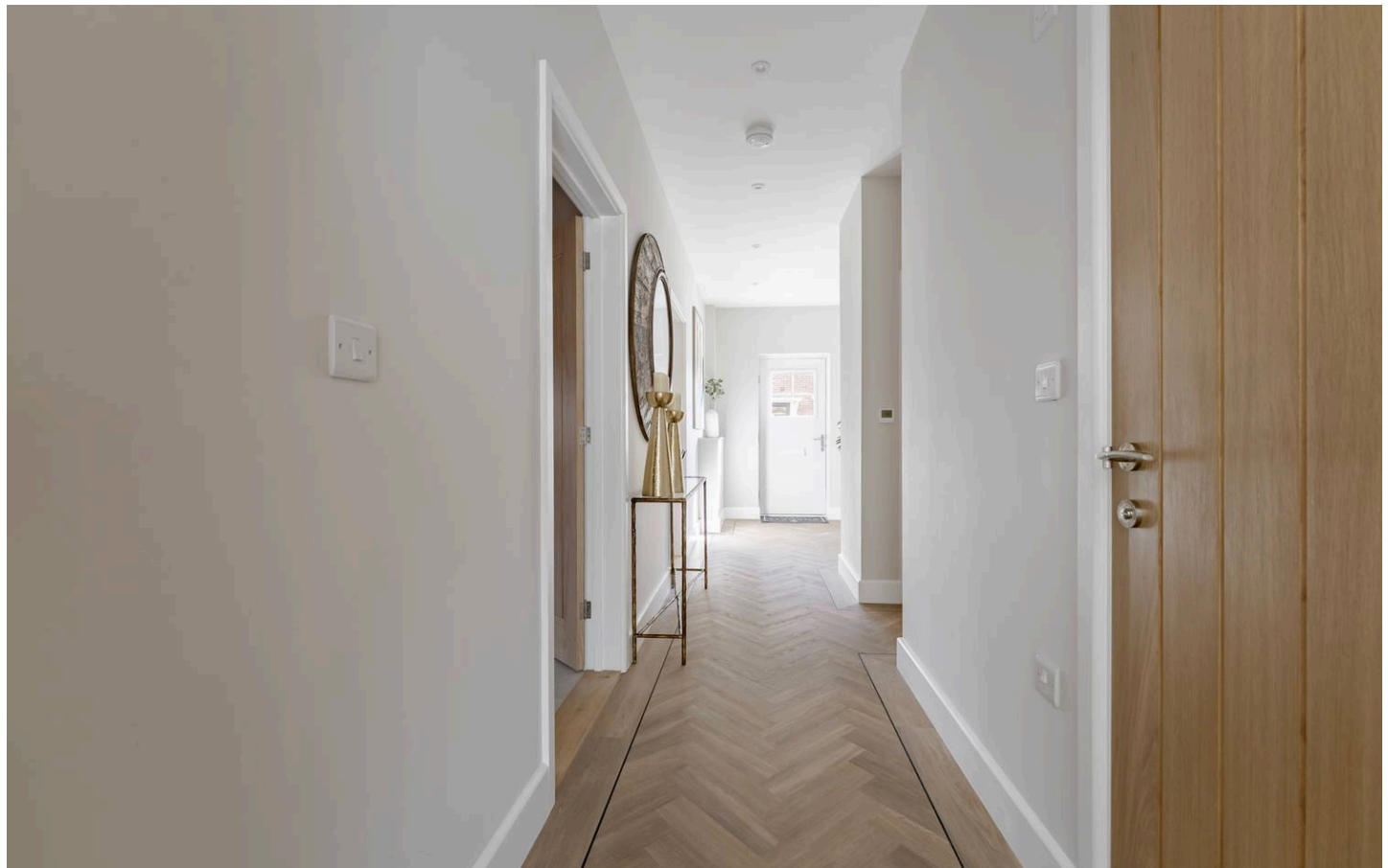


M&B

# Plot 37 Sarsons Meadow

Hopton

Council Tax band: TBD



M&B

# Plot 37 Sarsons Meadow

## Hopton

Sarsons Meadow has been designed to include a mixture of homes, from two-bedroom through to five-bedroom properties, to accommodate first-time buyers, families, and those looking for a home to enjoy their retirement. Footpaths surround Sarsons Meadow to the picturesque open countryside and link back to the village, with green open space situated in the heart of the development. Minors and Brady are pleased to be accepting reservations at Sarsons Meadow on current and future phases.

### Location

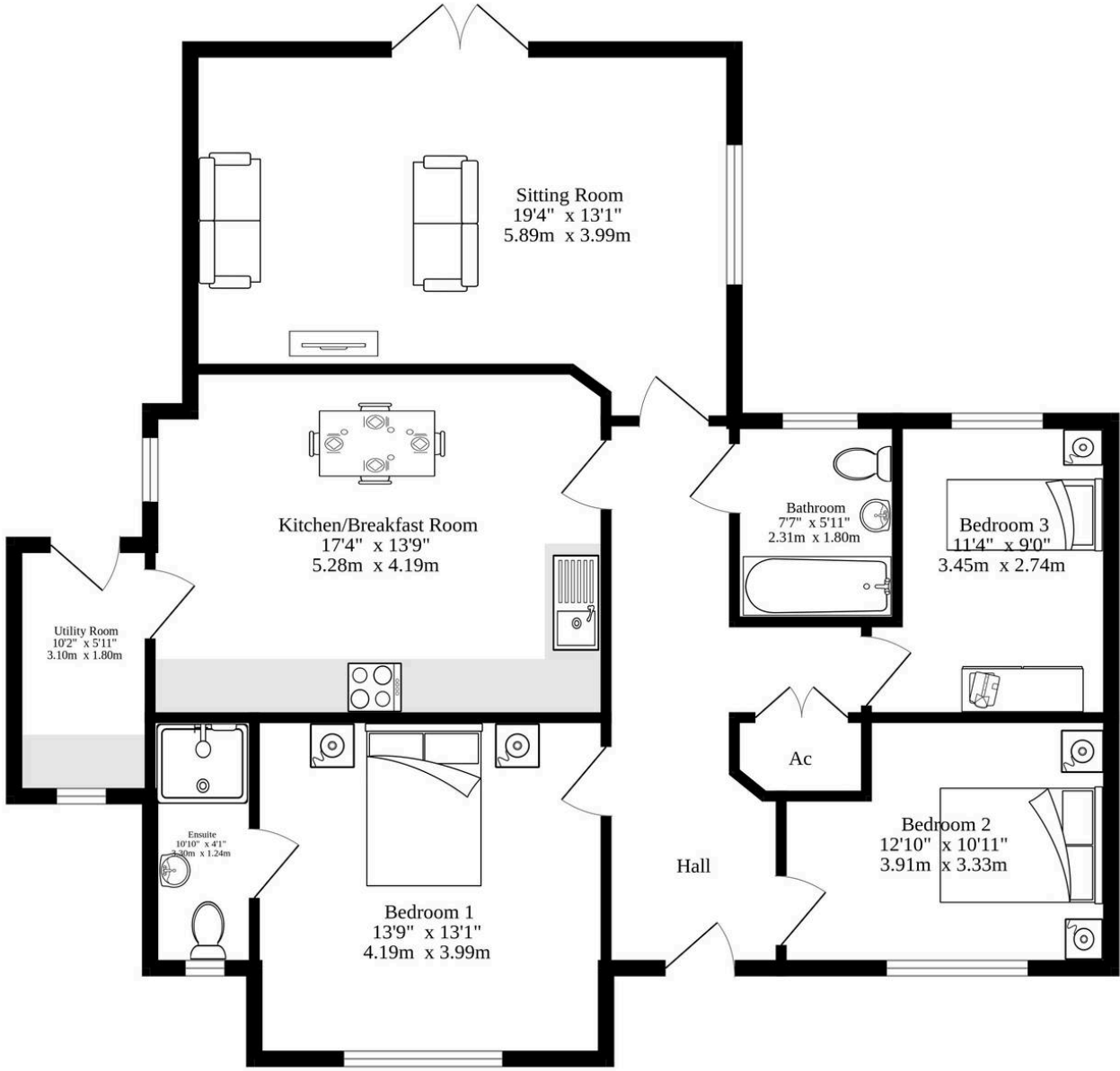
Hopton is conveniently situated to make the most of both town and country living. Market towns of Diss and Thetford are close by and boast excellent facilities. The historic market town of Bury St Edmunds and its medieval landmarks are a 25-minute drive away. Indulge in a day of shopping in Norwich, with its thriving open-air market, designer names and bustling independent boutiques, which is approximately 45 minutes by car. Cosmopolitan Ipswich, with its waterfront setting and restaurants, is a similar distance, and the picturesque seaside town of Southwold, located within the Suffolk Coast and Heaths area of outstanding natural beauty, is just over an hour away.

### The Developer - Burgess Homes

These homes are meticulously considered with the individual homeowners in mind. Burgess Homes work tirelessly to build properties to the highest specification so you, as the homeowner, can relax knowing everything has been taken care of. They design each kitchen from scratch, making the most of the space with practical family living in mind. Never compromising on quality, their kitchen cabinetry is finished with quartz worktops and quality branded sanitaryware is installed in their luxury bathrooms and en-suites. Burgess Homes use bespoke joinery, adding details such as oak



# Ground Floor



Whilst every attempt has been made to ensure the accuracy of the floorplan contained here, measurements of doors, windows, rooms and any other items are approximate and no responsibility is taken for any error, omission or mis-statement. This plan is for illustrative purposes only and should be used as such by any prospective purchaser. The services, systems and appliances shown have not been tested and no guarantee as to their operability or efficiency can be given.  
Made with Metropix ©2026

# Dreaming of this home? Let's make it a reality



Meet *Nicola*  
Branch Manager



Meet *Theo*  
Property Consultant



Meet *Anya*  
Aftersales Progressor

Minors & Brady  
*Your home, our market*

 [diss@minorsandbrady.co.uk](mailto:diss@minorsandbrady.co.uk)

 01379 771444

 46-47 Mere Street, Diss, IP22 4AG

CAISTER-ON-SEA | DEREHAM | DISS | NORWICH | OULTON BROAD | WROXHAM



## How can we support

- ✓ Residential Mortgages
- ✓ Protection & Insurance
- ✓ Buy-to-let (personal and limited company)



**Matt Waters**  
Director and  
Principal



**Victoria Payne**  
Mortgage and  
Protection Advisor

Offering you quick and professional mortgage advice every step of the way.

T: 01603 210378  
E: [enquiries@norfolk-mortgages.co.uk](mailto:enquiries@norfolk-mortgages.co.uk)