



Thoughtful Place Half Field Lane, Deopham

£475,000 Freehold

Thoughtful Place is the kind of home that makes you take a deep breath and instantly feel at ease. Set in the quiet village of Deopham, this four-bedroom bungalow is full of character, warmth, and space to grow — whether you're starting a family, working from home, or just want a slower pace of life. Inside, you'll find cosy corners with log burners, a proper farmhouse-style kitchen, and a handy utility room to keep the muddy boots and laundry out of sight. One of the bedrooms is perfect as a home office, and the main suite has its own en-suite and dressing area for a bit of grown-up calm. The garden's a dream for kids, pets, BBQs, or just pottering about in peace. And with Wymondham College* in catchment, you've got top-notch schooling on the doorstep too.

Council Tax band: D

Tenure: Freehold

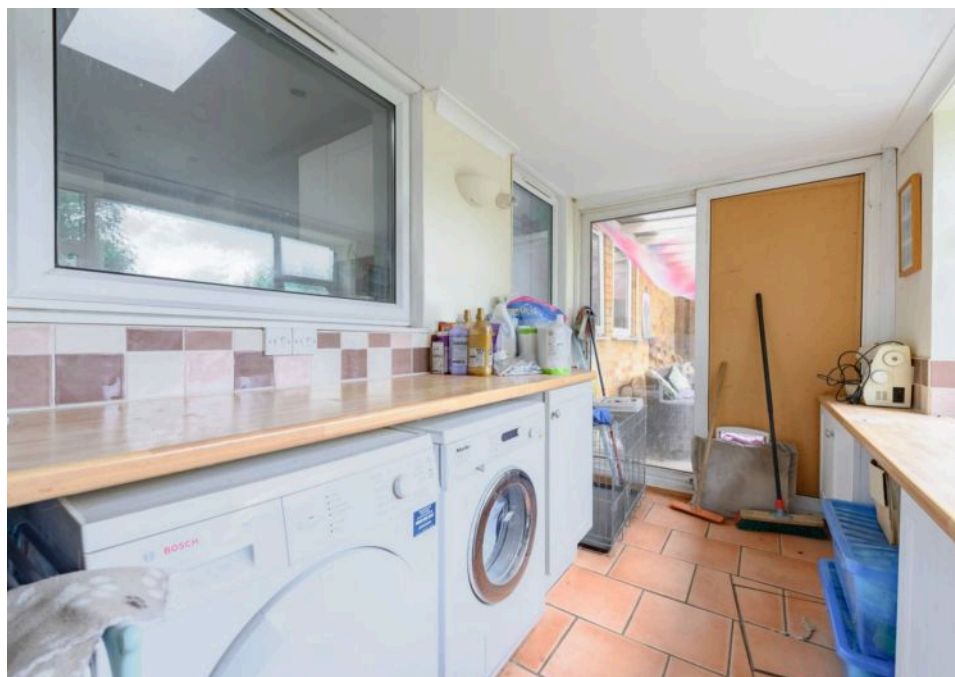
Thoughtful Place is the kind of home that makes you take a deep breath and instantly feel at ease. Set in the quiet village of Deopham, this four-bedroom bungalow is full of character, warmth, and space to grow — whether you're starting a family, working from home, or just want a slower pace of life. Inside, you'll find cosy corners with log burners, a proper farmhouse-style kitchen, and a handy utility room to keep the muddy boots and laundry out of sight. One of the bedrooms is perfect as a home office, and the main suite has its own en-suite and dressing area for a bit of grown-up calm. The garden's a dream for kids, pets, BBQs, or just pottering about in peace. And with Wymondham College* in catchment, you've got top-notch schooling on the doorstep too.

The Location

Set in the peaceful village of Deopham, Thoughtful Place offers a calm, countryside setting with everything you need just a short drive away. Deopham is a friendly rural community surrounded by open fields and quiet



Thoughtful Place is the kind of home that makes you take a deep breath and instantly feel at ease. Set in the quiet village of Deopham, this four-bedroom bungalow is full of character, warmth, and space to grow — whether you're starting a family, working from home, or just want a slower pace of life. Inside, you'll find cosy corners with log burners, a proper farmhouse-style kitchen, and a handy utility room to keep the muddy boots and laundry out of sight. One of the bedrooms is perfect as a home office, and the main suite has its own en-suite and dressing area for a bit of grown up



Thoughtful Place is the kind of home that makes you take a deep breath and instantly feel at ease. Set in the quiet village of Deopham, this four-bedroom bungalow is full of character, warmth, and space to grow — whether you're starting a family, working from home, or just want a slower pace of life. Inside, you'll find cosy corners with log burners, a proper farmhouse-style kitchen, and a handy utility room to keep the muddy boots and laundry out of sight. One of the bedrooms is perfect as a home office, and the main suite has its own en-suite and dressing area for a bit of grown-up calm. The garden's a dream for kids, pets, BBQs, or just pottering about in peace. And with Wymondham College* in catchment, you've got top-notch schooling on the doorstep too.

The Location

Set in the peaceful village of Deopham, Thoughtful Place offers a calm, countryside setting with everything you need just a short drive away. Deopham is a friendly rural community surrounded by open fields and quiet lanes — perfect for families, dog walks, or anyone who enjoys a bit of space and fresh air. There's a well-used village hall for local events, and the area is served by a well-regarded primary school, with several pre-schools close by.

For day-to-day needs, the nearby market towns of Wymondham and Attleborough have you covered, offering a great mix of supermarkets, independent shops, cafes, pubs, and essential services. You'll also find excellent transport links, including regular bus routes and train stations with direct lines to Norwich, Cambridge, and London.

Importantly for families, Thoughtful Place falls within the catchment area for Wymondham College – one of Norfolk's top-performing state schools – though admission is not guaranteed and is subject to the school's admissions criteria.

It's a location that makes life easy, with countryside peace and town convenience going hand in hand.

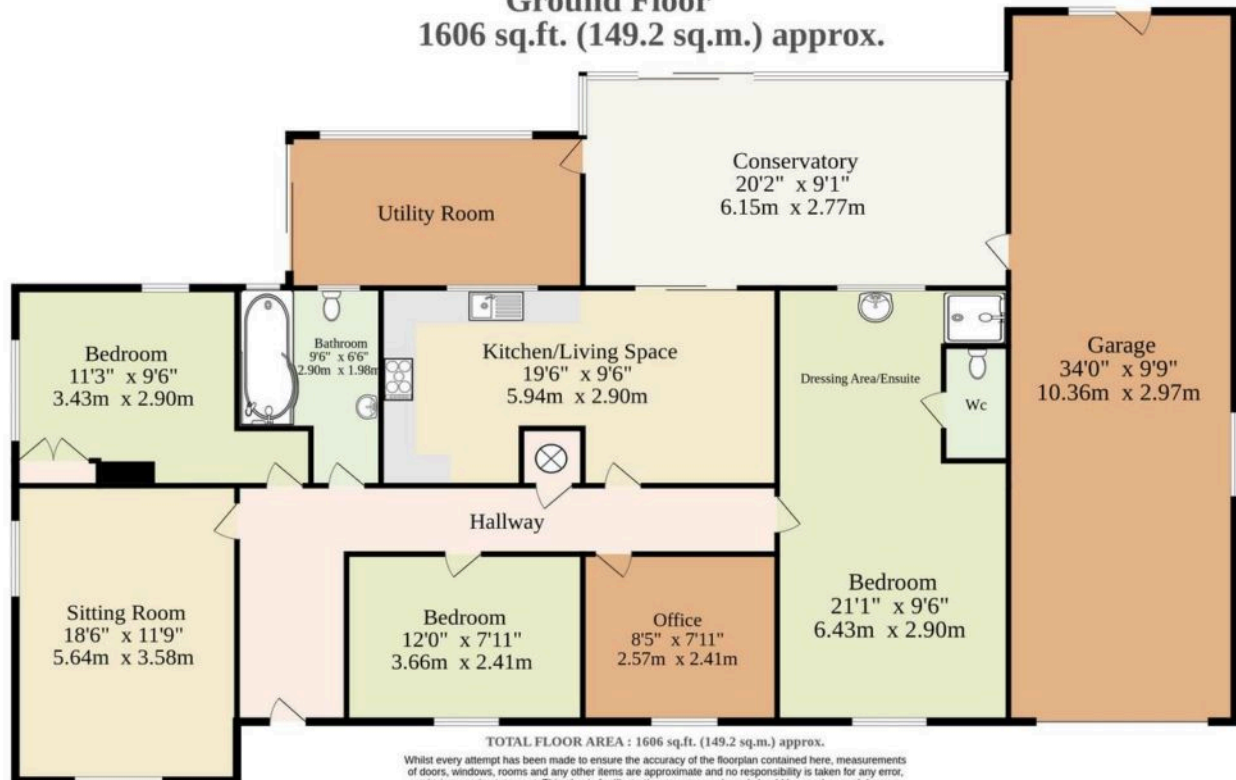
Thoughtful Place, Half Field Lane, Deopham

Set well back from the road and tucked into a generous, mature plot, Thoughtful Place is a home that just feels good the moment you arrive. This extended, detached bungalow has all the space you need to stretch out, settle in, and make your own — whether you're growing a family, working from home, or just looking for some peaceful, countryside living with excellent local schools nearby.

Inside, the home is full of charm and character, with a warm farmhouse-style kitchen that flows into a relaxed sitting area – perfect for slow mornings. There's also a separate utility room that keeps all the practical stuff tucked away – ideal for



Ground Floor
1606 sq.ft. (149.2 sq.m.) approx.



TOTAL FLOOR AREA : 1606 sq.ft. (149.2 sq.m.) approx.

Whilst every attempt has been made to ensure the accuracy of the floorplan contained here, measurements of doors, windows, rooms and any other items are approximate and no responsibility is taken for any error, omission or mis-statement. This plan is for illustrative purposes only and should be used as such by any prospective purchaser. The services, systems and appliances shown have not been tested and no guarantee as to their operability or efficiency can be given.
 Made with Metropix ©2025

You can include any text here. The text can be modified upon generating your brochure.

You can include any text here. The text can be modified upon generating your brochure.

