

4 Little Bethel Court Bethel Street, Norwich

£350,000 Freehold

Guide Price £350,000 - £375,000 Hidden away like a charming secret in the heart of Norwich, this delightful Grade II Listed two-bedroom home combines character, warmth, and city-centre excitement. Set within a well-kept private courtyard of just nine properties, this home is beautifully maintained and benefits from the rare advantages of off-street parking and no onward chain. Inside, you'll discover bright, inviting living spaces, a sleek modern kitchen, and two comfortable double bedrooms—one with its own charming balcony. Step outside to relax on your private patio or stroll through the gorgeous communal gardens. Just moments from Chapel Field Gardens, Norwich Market, and the buzzing food scene of St Benedicts Street, this home offers the perfect mix of peaceful retreat and lively city life. Whether you're seeking a stylish city pad or a cosy sanctuary, this gem has personality, comfort, and plenty of charm.

Guide Price £350,000 - £375,000

Hidden away like a charming secret in the heart of Norwich, this delightful Grade II Listed two-bedroom home combines character, warmth, and city-centre excitement. Set within a well-kept private courtyard of just nine properties, this home is beautifully maintained and benefits from the rare advantages of off-street parking and no onward chain. Inside, you'll discover bright, inviting living spaces, a sleek modern kitchen, and two comfortable double bedrooms—one with its own charming balcony. Step outside to relax on your private patio or stroll through the gorgeous communal gardens. Just moments from Chapel Field Gardens, Norwich Market, and the buzzing food scene of St Benedicts Street, this home offers the perfect mix of peaceful retreat and lively city life. Whether you're seeking a stylish city pad or a cosy sanctuary, this gem has personality, comfort, and plenty of charm.

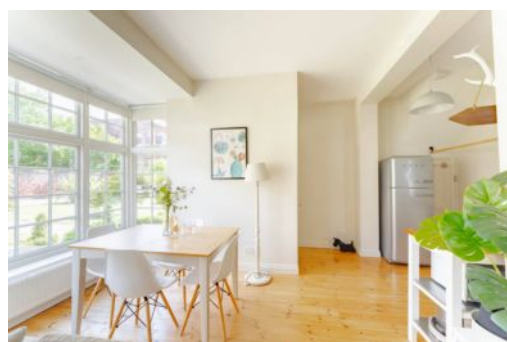
The Location

Perfectly positioned in the heart of Norwich's vibrant city centre. Nestled just



Guide Price £350,000 - £375,000

Hidden away like a charming secret in the heart of Norwich, this delightful Grade II Listed two-bedroom home combines character, warmth, and city-centre excitement. Set within a well-kept private courtyard of just nine properties, this home is beautifully maintained and benefits from the rare advantages of off-street parking and no onward chain. Inside, you'll discover bright, inviting living spaces, a sleek modern kitchen, and two comfortable double bedrooms—one with its own charming balcony.



Guide Price £350,000 - £375,000

Hidden away like a charming secret in the heart of Norwich, this delightful Grade II Listed two-bedroom home combines character, warmth, and city-centre excitement. Set within a well-kept private courtyard of just nine properties, this home is beautifully maintained and benefits from the rare advantages of off-street parking and no onward chain. Inside, you'll discover bright, inviting living spaces, a sleek modern kitchen, and two comfortable double bedrooms—one with its own charming balcony. Step outside to relax on your private patio or stroll through the gorgeous communal gardens. Just moments from Chapel Field Gardens, Norwich Market, and the buzzing food scene of St Benedicts Street, this home offers the perfect mix of peaceful retreat and lively city life. Whether you're seeking a stylish city pad or a cosy sanctuary, this gem has personality, comfort, and plenty of charm.

The Location

Perfectly positioned in the heart of Norwich's vibrant city centre. Nestled just moments from the serene Chapel Field Gardens, this delightful home is a short stroll from Chantry Place, Norwich's premier shopping destination, and a stone's throw from the ever-popular Waffle House—perfect for a sweet weekend treat or brunch with friends. Wander through the historic Norwich Market, explore boutique shops, or sample the array of dining options nearby, from cosy cafés to stylish restaurants and buzzing bars.

Just two streets away lies the lively St Benedicts Street. Here you'll find Haggie, a local favourite for delicious Eastern Mediterranean cuisine, along with a tempting mix of other fantastic restaurants, quirky bars, and vibrant eateries—making it a must-visit for food lovers and social butterflies alike.

Everything you need is right on your doorstep, yet the home's peaceful, tucked-away setting makes it feel like your own secret escape. Excellent transport links add to the appeal, with the nearby bus station offering direct services to Cambridge, London, and beyond—ideal for commuters or weekend adventurers.

Daily essentials are easily covered too, with local shops just around the corner. Whether you're after culture, convenience, or a bit of both, this charming city base promises a lifestyle full of fun, flair, and flexibility.

Little Bethel Court, Bethel Street, Norwich

Set in a secluded corner of one of Norwich's most desirable private enclaves, this beautifully maintained Grade II Listed



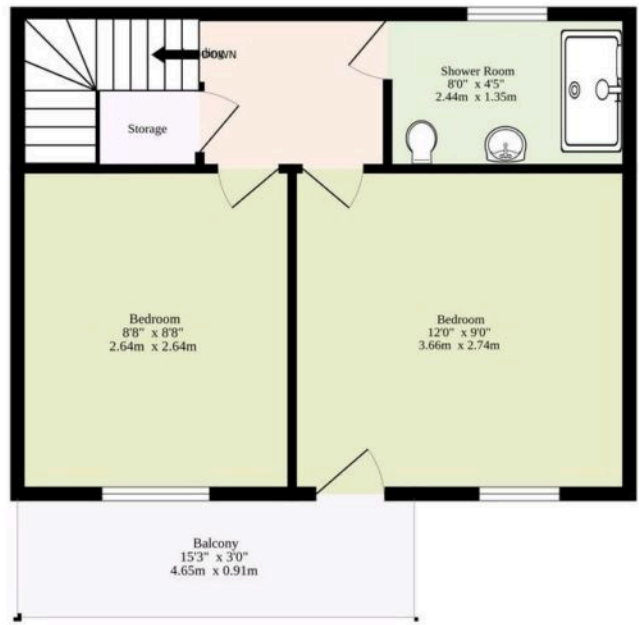
Sold Freehold

Connected to all mains services.

Ground Floor
249 sq.ft. (23.1 sq.m.) approx.



1st Floor
251 sq.ft. (23.3 sq.m.) approx.



TOTAL FLOOR AREA : 500 sq.ft. (46.5 sq.m.) approx.

Whilst every attempt has been made to ensure the accuracy of the floorplan contained here, measurements of doors, windows, rooms and any other items are approximate and no responsibility is taken for any error, omission or mis-statement. This plan is for illustrative purposes only and should be used as such by any prospective purchaser. The services, systems and appliances shown have not been tested and no guarantee as to their operability or efficiency can be given.
Made with Metropix ©2025

You can include any text here. The text can be modified upon generating your brochure.

You can include any text here. The text can be modified upon generating your brochure.

