



13 Platemarkers Court Printworks Drive, Norwich

£200,000 Leasehold

Guide Price: £200,000-£220,000 Lavish city living with the peaceful charm. This beautifully designed luxury apartment combines modern comfort with a prime location just minutes from the city centre.

Guide Price: £200,000-£220,000. Lavish city living with the peaceful charm of a riverside setting awaits at Platemakers Court, Printworks Drive. This beautifully designed luxury apartment combines modern comfort with a prime location just minutes from Norwich city centre. Set within an exclusive development consisting of just 20 apartments, it features a spacious open-plan living area and a private southwest-facing balcony overlooking the tranquil river. High-quality finishes and thoughtful touches such as underfloor heating and a large utility cupboard elevate the living experience. Residents benefit from secure access, lift convenience, and well-maintained communal facilities. With excellent local amenities and transport links nearby, this home offers the perfect balance of urban convenience and riverside relaxation.

The Location

Located in the vibrant NR3 postcode, Printworks Drive offers easy access to Norwich city centre, with its wide range of shops, restaurants, and cultural attractions. Families will appreciate the close proximity to well-regarded



Guide Price: £200,000-£220,000. Lavish city living with the peaceful charm of a riverside setting awaits at Platemakers Court, Printworks Drive. This beautifully designed luxury apartment combines modern comfort with a prime location just minutes from Norwich city centre. Set within an exclusive development consisting of just 20 apartments, it features a spacious open-plan living area and a private southwest-facing balcony overlooking the tranquil river. High-quality finishes and thoughtful touches such as underfloor heating and a large utility cupboard elevate the living



Guide Price: £200,000-£220,000. Lavish city living with the peaceful charm of a riverside setting awaits at Platemakers Court, Printworks Drive. This beautifully designed luxury apartment combines modern comfort with a prime location just minutes from Norwich city centre. Set within an exclusive development consisting of just 20 apartments, it features a spacious open-plan living area and a private southwest-facing balcony overlooking the tranquil river. High-quality finishes and thoughtful touches such as underfloor heating and a large utility cupboard elevate the living experience. Residents benefit from secure access, lift convenience, and well-maintained communal facilities. With excellent local amenities and transport links nearby, this home offers the perfect balance of urban convenience and riverside relaxation.

The Location

Located in the vibrant NR3 postcode, Printworks Drive offers easy access to Norwich city centre, with its wide range of shops, restaurants, and cultural attractions. Families will appreciate the close proximity to well-regarded schools, including St. Andrew's Primary and The Hewett Academy.

Local amenities are conveniently within walking distance, featuring a Co-op Food for groceries and a variety of independent cafes and shops along Magdalen Street.

Public transport is excellent, with multiple bus routes serving the area and Norwich Railway Station providing direct connections to London and beyond. For outdoor enthusiasts, Heigham Park is nearby, offering a pleasant green space for relaxation. The train station is also easily accessible by foot or a short journey.

Platemakers Court, Printworks Drive

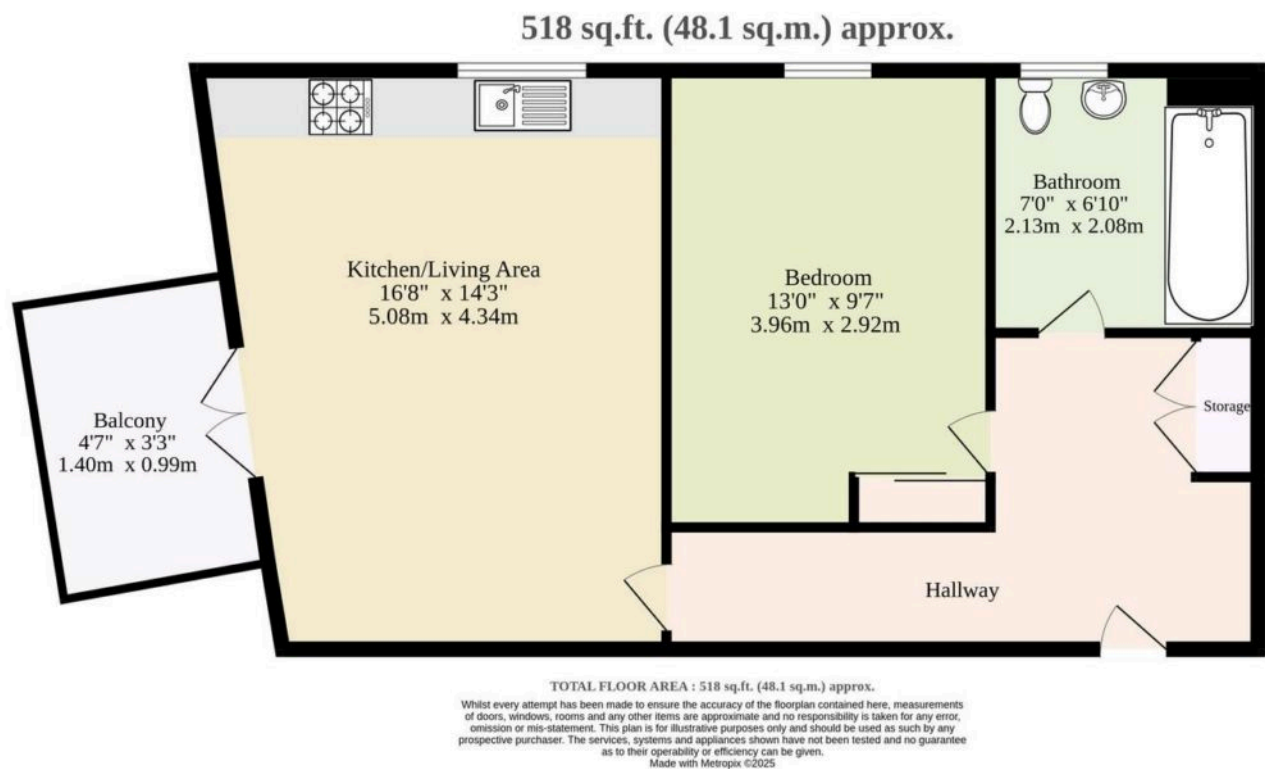
This beautifully presented luxury riverside apartment offers a stylish and comfortable living space in a highly sought-after location, just a 10-minute walk from the vibrant centre of Norwich.

Platemakers Court consists of just 20 individually owned apartments within a larger riverside setting, offering a more exclusive and community-focused feel while remaining distinct from the neighbouring buildings.

This third-floor leasehold property enjoys a private southwest-facing balcony overlooking the tranquil river—perfect for relaxing or entertaining.

Inside, the apartment boasts a spacious open-plan kitchen, dining, and living area measuring approximately 16'8" by





You can include any text here. The text can be modified upon generating your brochure.

You can include any text here. The text can be modified upon generating your brochure.

