

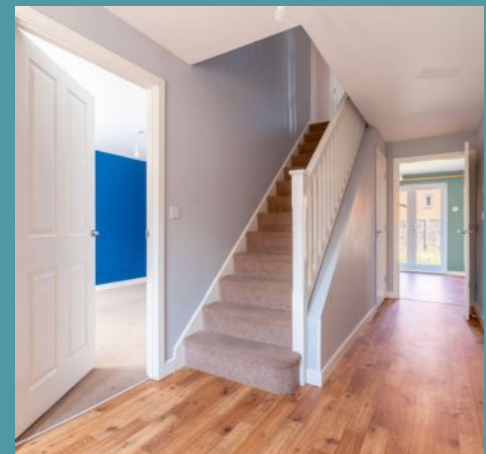


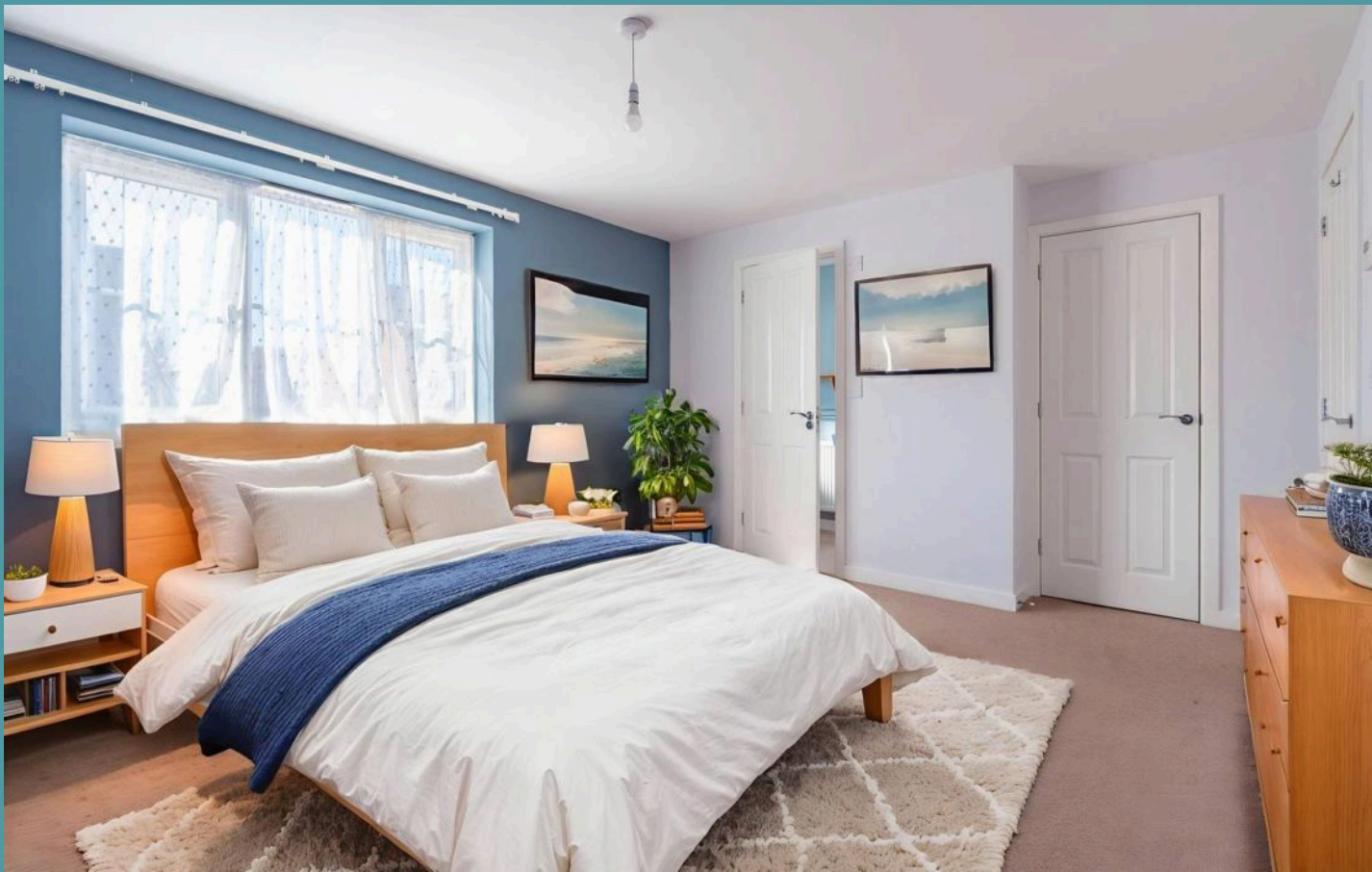
50 Harvest Way, Harleston

50 Harvest Way

Harleston, Harleston

Great location and an abundance of space make this five-bedroom detached house an ideal choice for family living. Set within easy reach of the vibrant Harleston town centre, the home offers a perfect blend of modern convenience and rural charm. The spacious layout features a light-filled entrance hall, a welcoming lounge, and a large open-plan kitchen and dining area that opens onto a private, enclosed garden. With five well-sized bedrooms, including a principal bedroom with an ensuite, there is ample room for work, rest, and play. Additional practical benefits include a downstairs cloakroom, garage, gas central heating, and double glazing for year-round comfort. This energy-efficient home is perfectly positioned to enjoy the strong community spirit, local amenities, and beautiful surroundings of Harleston.





50 Harvest Way

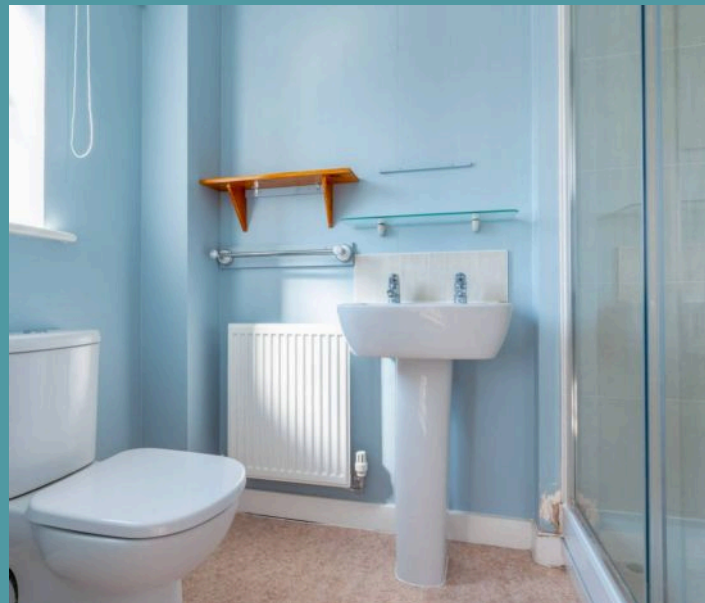
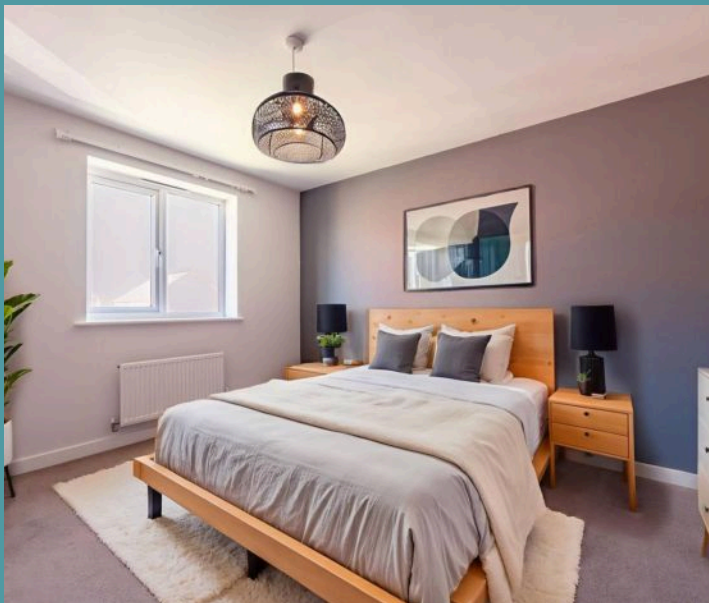
Harleston, Harleston

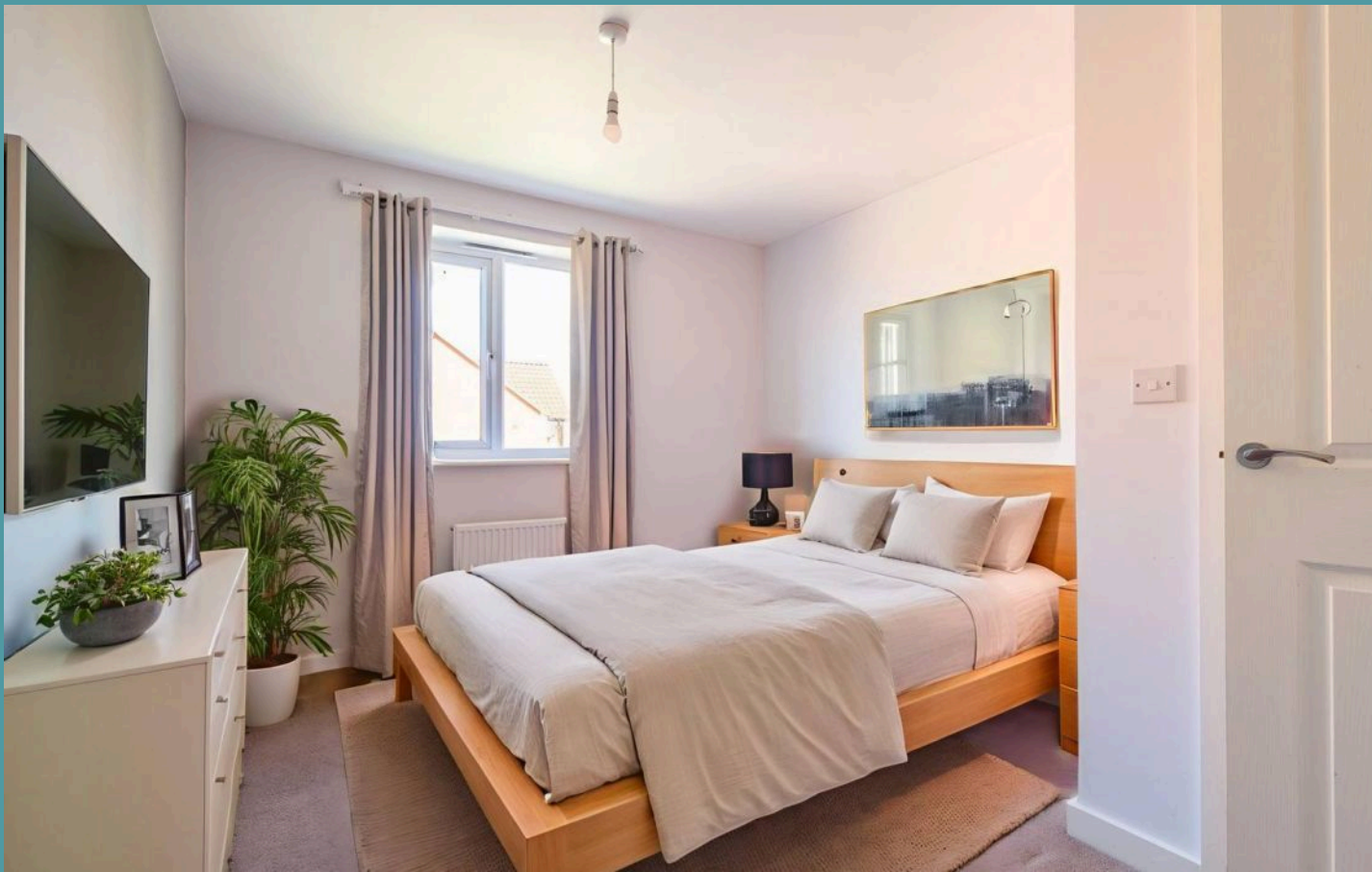
The Location

Harleston is a vibrant market town that perfectly balances rural charm with modern convenience. Offering a welcoming atmosphere and a strong sense of community, the town is well-equipped with everything needed for comfortable living. A variety of supermarkets, independent food shops, and local businesses ensure that everyday essentials are always within easy reach. Traditional pubs, cafés, and restaurants provide plenty of options for dining and socialising, making it an inviting place to enjoy a relaxed lifestyle.

For those who love the outdoors, Harleston has plenty to offer. The town features well-maintained recreation grounds, leisure centres, and scenic walking routes, catering to those who enjoy an active lifestyle. Water sports enthusiasts can take advantage of nearby sailing clubs, while local sports teams, including Harleston Football Club, provide opportunities to get involved in the community and stay active.

Harleston is also a great choice for families, with highly regarded schools and excellent community facilities. A calendar of local events and markets throughout the year keeps the town buzzing with activity, fostering a friendly and engaging environment.





50 Harvest Way

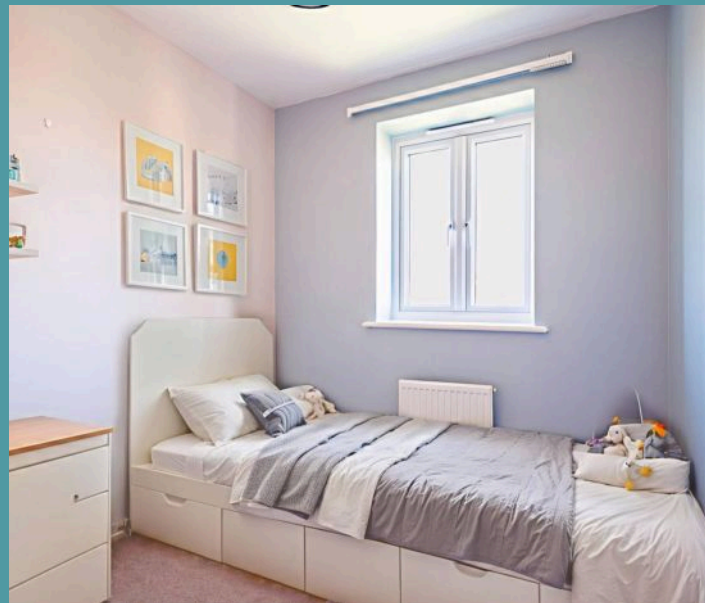
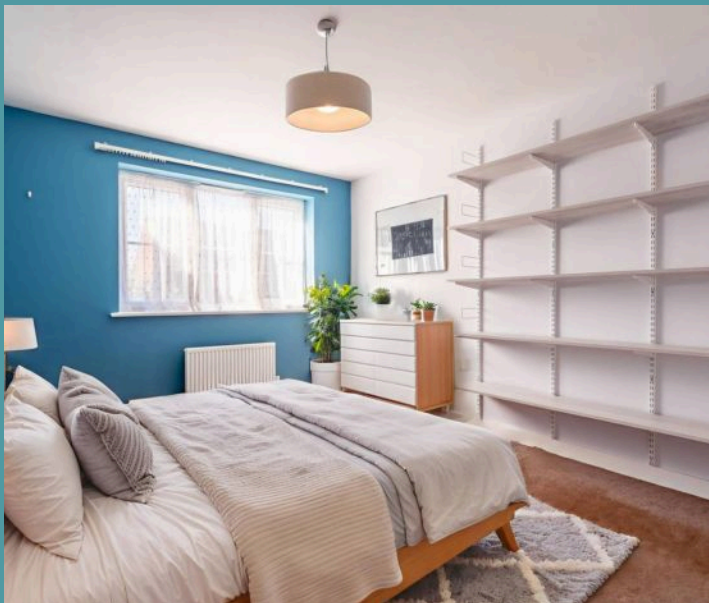
Harleston, Harleston

Harvest Way, Harleston

Welcome to this beautifully presented five-bedroom detached house, perfectly situated within easy reach of the charming Harleston Town Centre. Designed with modern living in mind, this spacious and stylish home offers generous accommodation, a private rear garden, and a garage – ideal for growing families or professionals looking for space, comfort and convenience.

From the moment you step inside, the light-filled entrance hall sets the tone for the rest of the home. The welcoming lounge provides the perfect setting for relaxing evenings, while the expansive kitchen and dining room is the true heart of the home. With ample space for entertaining, family meals, and everyday living, this open-plan area is enhanced by two sets of patio doors that open directly onto the enclosed rear garden, a fantastic space for summer barbecues, children's play, or peaceful morning coffees.

Practicality is well considered, with a downstairs cloakroom and a garage offering useful additional storage, power, and lighting.





50 Harvest Way

Harleston, Harleston

Upstairs, five well-proportioned bedrooms ensure flexibility for every lifestyle, whether you're working from home, hosting guests, or seeking separate rooms for a large family. The principal bedroom benefits from its own ensuite shower room, adding a touch of luxury, while a modern family bathroom serves the remaining rooms with sleek fittings and a clean, contemporary style.

This home also boasts gas central heating and UPVC double glazing throughout, ensuring comfort and efficiency year-round. With an EPC rating of B, the property is both energy-efficient and cost-effective.

Agents Note

Sold Freehold

GCH - followed by remaining mains services.

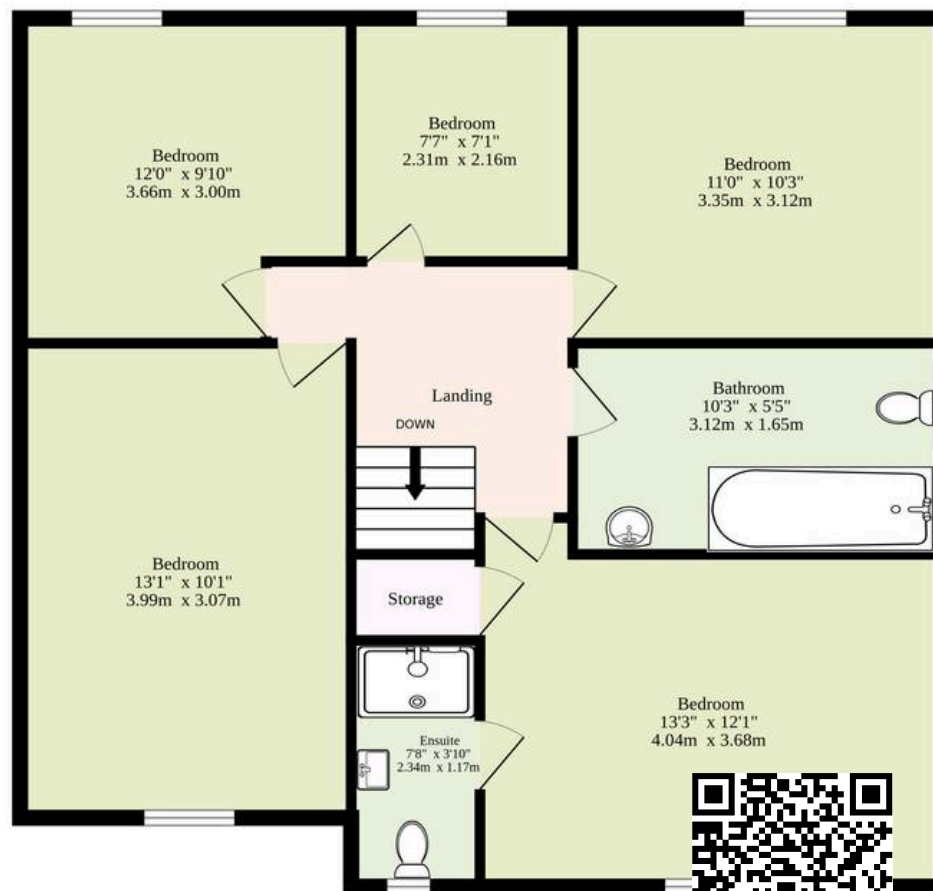
AI Staged



Ground Floor
752 sq.ft. (69.9 sq.m.) approx.



1st Floor
769 sq.ft. (71.4 sq.m.) approx.



TOTAL FLOOR AREA : 1521 sq.ft. (141.3 sq.m.) approx.

Whilst every attempt has been made to ensure the accuracy of the floorplan contained here, measurements of doors, windows, rooms and any other items are approximate and no responsibility is taken for any error, omission or mis-statement. This plan is for illustrative purposes only and should be used as such by any prospective purchaser. The services, systems and appliances shown have not been tested and no guarantee as to their operability or efficiency can be given.

Made with Metropix ©2025