



21 Primrose Close, Attleborough

Attleborough



Guide Price £400,000
Minors & Brady

21 Primrose Close

Attleborough, Attleborough

Guide Price £400,000 - £425,000. This thoughtfully extended four-bedroom detached home offers spacious and versatile living, perfect for growing families. Filled with natural light, the living room opens through bifold doors to a private south-facing garden, creating a wonderful flow between indoor and outdoor spaces. A generous dining room and modern kitchen with a separate utility enhance the home's practicality and style. Upstairs, four bedrooms, two with built-in wardrobes and a master bedroom boasting a sleek en-suite shower room. The family bathroom impresses with both a corner bath and separate shower, ideal for busy mornings. Set against a backdrop of peaceful green space, this delightful home combines comfort and thoughtful design to create the perfect family home.

- Guide Price £400,000 - £425,000
- Spacious four-bedroom detached family home with thoughtful extensions
- Bright living room featuring bifold doors opening to a south-facing garden
- Generous dining room with dual aspect windows for plenty of natural light
- Modern kitchen with fitted water softener and a separate utility room for added convenience
- Three additional well-proportioned bedrooms
- Master bedroom with built-in wardrobes and a stylish en-suite shower room
- Family bathroom with both a corner bath and separate shower
- Private south-facing rear garden backing onto open green space
- Large garage with off-road parking for multiple vehicles

M&B





M&B

21 Primrose Close

Attleborough, Attleborough

Council Tax band: D

Tenure: Freehold

EPC Energy Efficiency Rating: D

EPC Environmental Impact Rating:



M&B

21 Primrose Close

Attleborough, Attleborough

Guide Price £400,000 - £425,000. This thoughtfully extended four-bedroom detached home offers spacious and versatile living, perfect for growing families. Filled with natural light, the living room opens through bifold doors to a private south-facing garden, creating a wonderful flow between indoor and outdoor spaces. A generous dining room and modern kitchen with a separate utility enhance the home's practicality and style. Upstairs, four bedrooms, two with built-in wardrobes and a master bedroom boasting a sleek en-suite shower room. The family bathroom impresses with both a corner bath and separate shower, ideal for busy mornings. Set against a backdrop of peaceful green space, this delightful home combines comfort and thoughtful design to create the perfect family home.

The Location

Situated in Attleborough a charming market town with charm and a welcoming atmosphere. The town features a bustling market square with shops, boutiques and cafes, as well as a vibrant weekly market offering local goods. Alongside Attleborough Train Station just a 3-minute journey away and supermarkets such as Sainsburys' adding to the convenience and charm of this town.

Nearby Thetford Forest Park is ideal for nature lovers and the beautiful Norfolk countryside is perfect for exploring quaint villages and scenic views. With easy access to destinations like Norwich and the Norfolk Broads, Attleborough provides a gateway to experiences in a captivating setting.

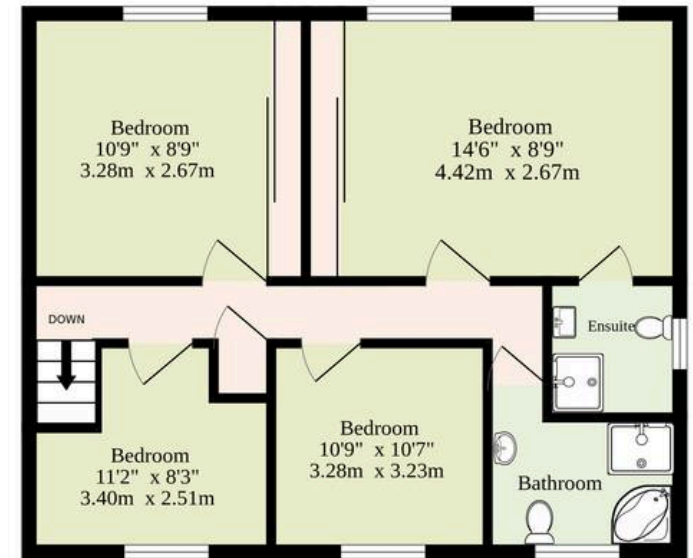
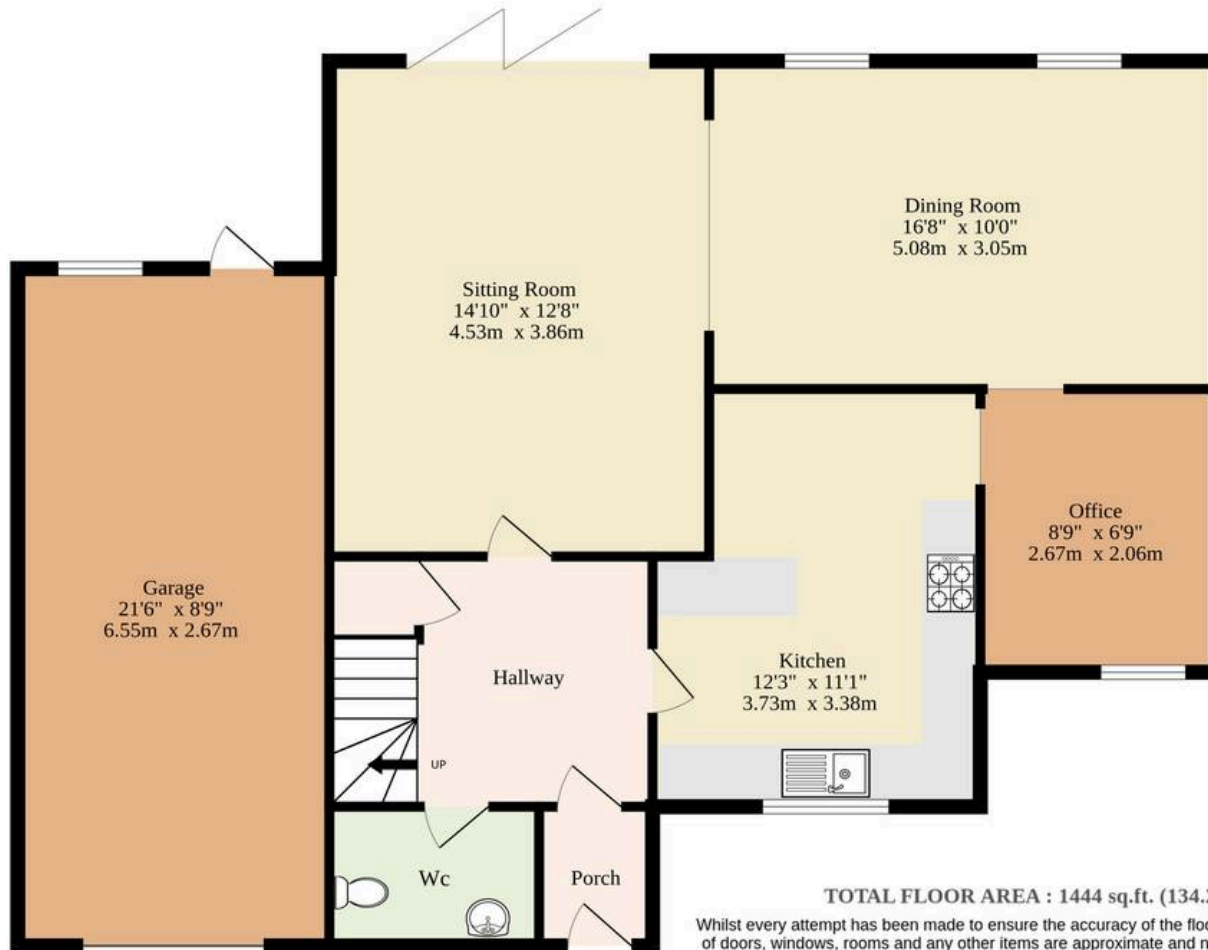
Primrose Close, Attleborough

This generous four-bedroom detached family home has been thoughtfully extended by the current owners, offering spacious and versatile living accommodation throughout. The entrance porch leads into a welcoming hallway with a convenient downstairs WC



Ground Floor
872 sq.ft. (81.0 sq.m.) approx.

1st Floor
572 sq.ft. (53.1 sq.m.) approx.



TOTAL FLOOR AREA : 1444 sq.ft. (134.2 sq.m.) approx.

Whilst every attempt has been made to ensure the accuracy of the floorplan contained here, measurements of doors, windows, rooms and any other items are approximate and no responsibility is taken for any error, omission or mis-statement. This plan is for illustrative purposes only and should be used as such by any prospective purchaser. The services, systems and appliances shown have not been tested and no guarantee as to their operability or efficiency can be given.

Made with Metropix ©2025

Dreaming of this home? Let's make it a reality



Meet Callum
Senior Property Consultant



Meet Ayesgul
Aftersales Progressor



Meet Marlo
Senior Property Valuer

Minors & Brady
Your home, our market



dereham@minorsandbrady.co.uk



01362 700820



9a Market Place, Dereham, NR19 2AW

CAISTER-ON-SEA | DEREHAM | DISS | NORWICH | OULTON BROAD | WROXHAM



How can we support

- ✓ Residential Mortgages
- ✓ Protection & Insurance
- ✓ Buy-to-let (personal and limited company)



Matt Waters
Senior Mortgage
and Protection Advisor



Victoria Payne
Mortgage and
Protection Advisor

Scan to book your
appointment today



T: 01692 531372
E: enquiries@norfolk-mortgages.co.uk