



Yew Tree Cottage, The Street

Guide Price £700,000

Yew Tree Cottage

The Street, Norwich

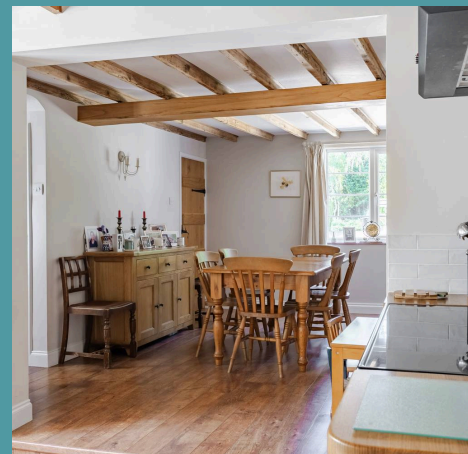
Guide Price £700,000 - £750,000. Set in a location admired by many and treasured by those fortunate enough to live here, Yew Tree Cottage is a residence that will be remarkably hard to part with. This 18th-century jewel marries vintage character with contemporary ease, offering a warm, inviting space bathed in natural light and crafted with care. From intimate evenings by the wood burner to vibrant garden gatherings beneath fruit-laden trees and visiting wildlife, every moment feels truly exceptional. Situated in the peaceful village of Bramerton yet only minutes from the Norfolk Broads and Norwich, it's a place where community, nature, and comfort combine harmoniously. More than a house, it's a home brimming with soul, memories, and the promise of many more to come.

Council Tax band: F

Tenure: Freehold

EPC Energy Efficiency Rating: E

EPC Environmental Impact Rating:





Yew Tree Cottage

The Street, Norwich

Guide Price £700,000 - £750,000. Set in a location admired by many and treasured by those fortunate enough to live here, Yew Tree Cottage is a residence that will be remarkably hard to part with. This 18th-century jewel marries vintage character with contemporary ease, offering a warm, inviting space bathed in natural light and crafted with care. From intimate evenings by the wood burner to vibrant garden gatherings beneath fruit-laden trees and visiting wildlife, every moment feels truly exceptional. Situated in the peaceful village of Bramerton yet only minutes from the Norfolk Broads and Norwich, it's a place where community, nature, and comfort combine harmoniously. More than a house, it's a home brimming with soul, memories, and the promise of many more to come.

What's around you...

Yew Tree Cottage is placed in the idyllic village of Bramerton. This prestigious home presents a unique opportunity to embrace tranquil, private living within striking proximity to the renowned Norfolk Broads. Just a leisurely stroll from the doorstep, residents can wander down to the river's edge, where peaceful waters invite kayaking adventures — a pastime of the vendors, perfect for those seeking an active, healthy lifestyle.

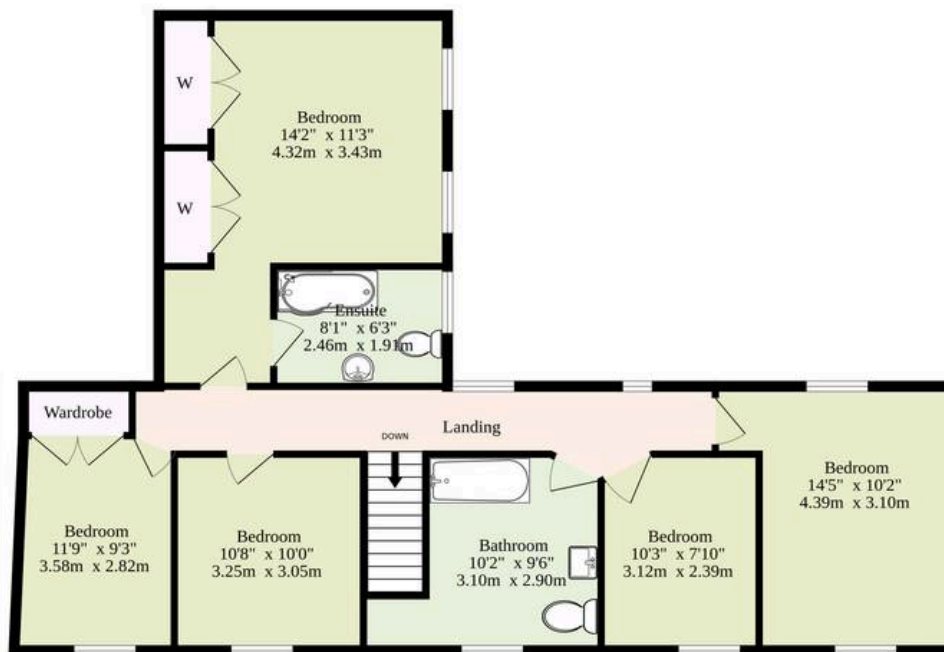
The nearby pubs offer exceptional dining in a warm and welcoming setting, ideal for relaxing evenings by the river after exploring the stunning local countryside. Bramerton itself is cherished for its quiet charm, friendly neighbours and abundant wildlife, creating a harmonious backdrop for everyday living.



Ground Floor
1050 sq.ft. (97.5 sq.m.) approx.



1st Floor
904 sq.ft. (84.0 sq.m.) approx.



TOTAL FLOOR AREA : 1954 sq.ft. (181.5 sq.m.) approx.

Whilst every attempt has been made to ensure the accuracy of the floorplan contained here, measurements of doors, windows, rooms and any other items are approximate and no responsibility is taken for any error, omission or mis-statement. This plan is for illustrative purposes only and should be used as such by any prospective purchaser. The services, systems and appliances shown have not been tested and no guarantee as to their operability or efficiency can be given.
Made with Metropix ©2025

