



32 Beechlands Park, Southrepps  
£290,000



# 32 Beechlands Park

Southrepps, Norwich

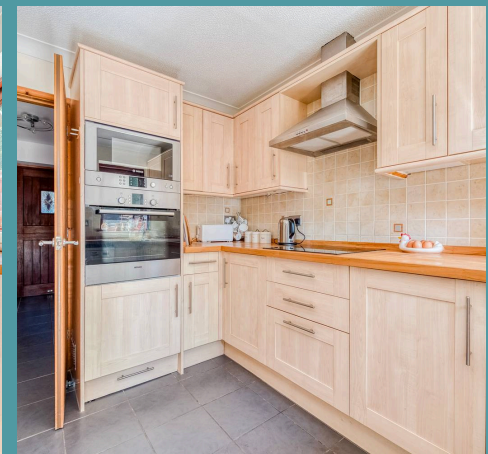
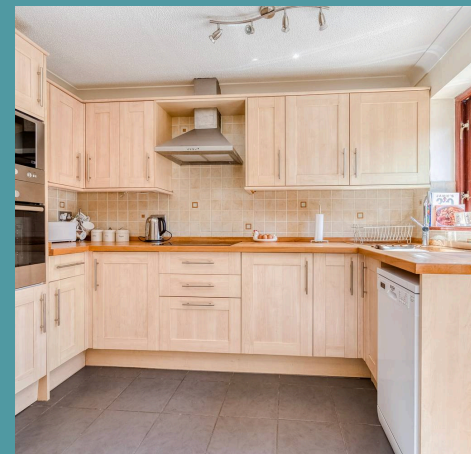
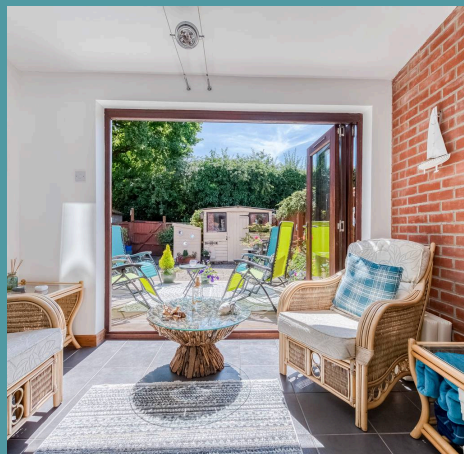
Arranged across three floors, this well-designed mid-terraced home is set in the charming village of Southrepps and offers bright, flexible living space with subtle character throughout. The garden room, with its wraparound views, opens onto a private, leafy garden—ideal for relaxed mornings or laid-back get-togethers. There are four generously sized bedrooms, including a spacious top-floor suite with its own ensuite, offering both comfort and practicality. Southrepps is a friendly Norfolk village with a much-loved pub, local shop, and easy links to nearby Cromer and Overstrand, where beaches, countryside walks, and independent cafés await. Whether you're looking for a full-time home or a weekend escape, this property offers a comfortable and inviting base in one of North Norfolk's most desirable spots. A home that balances easy living with a touch of something special.

Council Tax band: B

Tenure: Freehold

EPC Energy Efficiency Rating: D

EPC Environmental Impact Rating: E







## 32 Beechlands Park

Southrepps, Norwich

Arranged across three floors, this well-designed mid-terraced home is set in the charming village of Southrepps and offers bright, flexible living space with subtle character throughout. The garden room, with its wraparound views, opens onto a private, leafy garden—ideal for relaxed mornings or laid-back get-togethers. There are four generously sized bedrooms, including a spacious top-floor suite with its own ensuite, offering both comfort and practicality. Southrepps is a friendly Norfolk village with a much-loved pub, local shop, and easy links to nearby Cromer and Overstrand, where beaches, countryside walks, and independent cafés await. Whether you're looking for a full-time home or a weekend escape, this property offers a comfortable and inviting base in one of North Norfolk's most desirable spots. A home that balances easy living with a touch of something special.

### The Location

Beechlands Park enjoys a quiet setting in the heart of the highly sought-after village of Southrepps, a charming North Norfolk community prized for its character, friendly atmosphere, and superb access to the stunning nearby coastline.

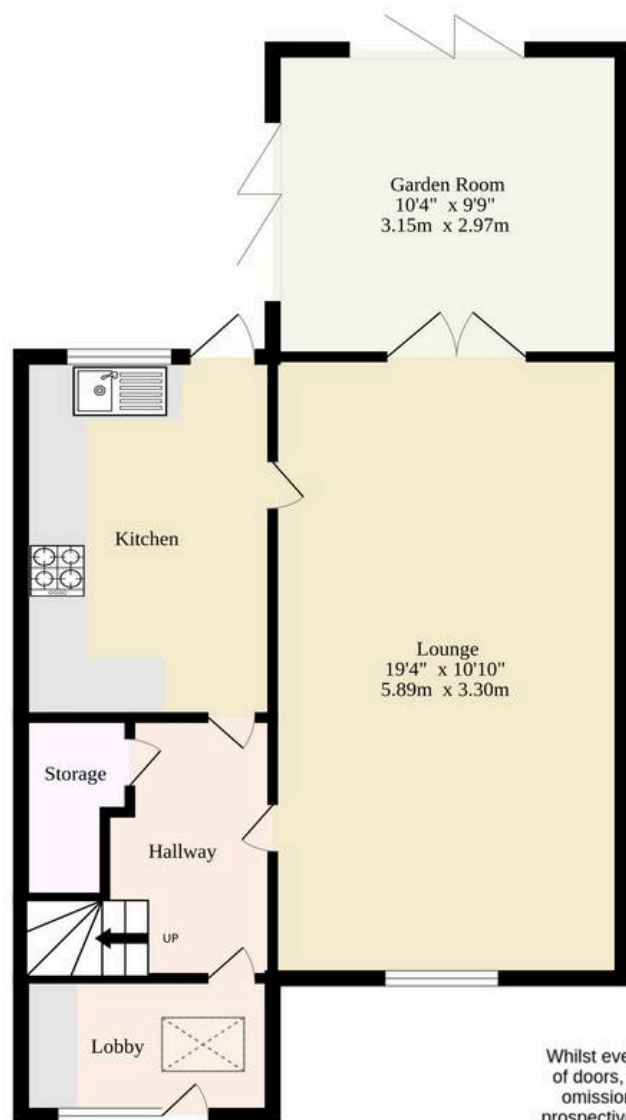
This delightful village is perfectly equipped with a range of everyday amenities including a well-regarded primary school, a popular traditional pub, a bustling village hall, and a handy local shop—everything you need just moments from your door.

Just a short drive away, the picturesque coastal

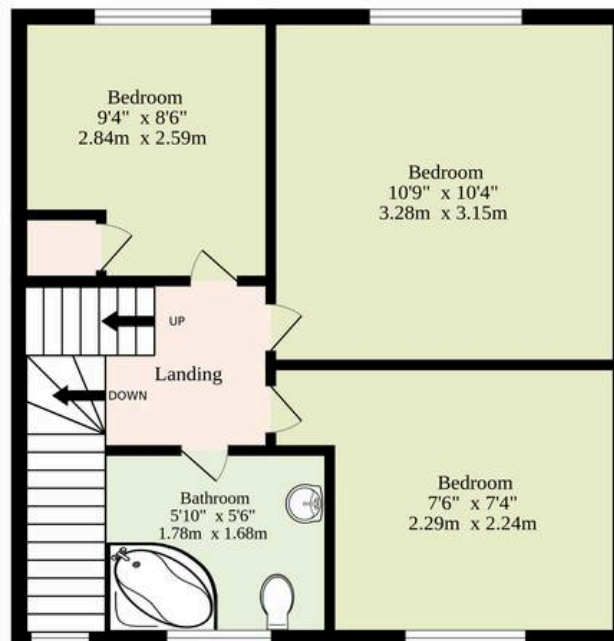




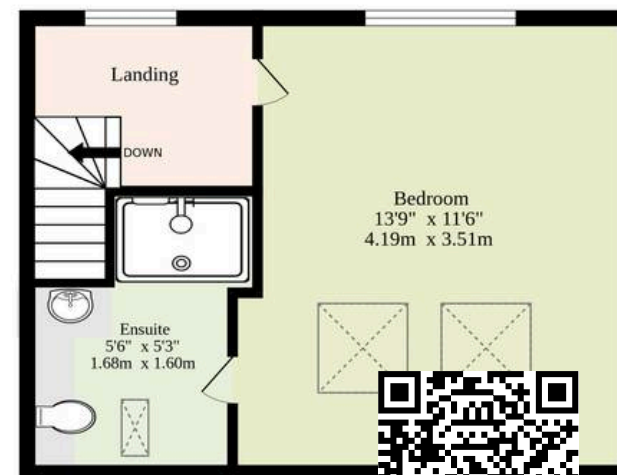
Ground Floor  
489 sq.ft. (45.4 sq.m.) approx.



1st Floor  
295 sq.ft. (27.4 sq.m.) approx.



2nd Floor  
228 sq.ft. (21.2 sq.m.) approx.



**TOTAL FLOOR AREA : 1012 sq.ft. (94.0 sq.m.) approx.**

Whilst every attempt has been made to ensure the accuracy of the floorplan contained here, measurements of doors, windows, rooms and any other items are approximate and no responsibility is taken for any error, omission or mis-statement. This plan is for illustrative purposes only and should be used as such by any prospective purchaser. The services, systems and appliances shown have not been tested and no guarantee as to their operability or efficiency can be given.

Made with Metropix ©2025

