



Regalis Brimbelow Road, Hoveton  
Norwich



Minors & Brady



# Regalis Brimbelow Road

Hoveton, Norwich

Graced by privacy and natural light, this beautifully renovated detached bungalow sits on one of Hoveton's most peaceful and desirable roads, offering an exceptional blend of refined living and countryside tranquillity. Beyond elegant double gates, a vibrant landscaped garden and wide driveway set the tone for the calm, spacious interiors within. The home flows seamlessly from a bright front lounge to an expansive open-plan kitchen, dining, and living area, perfect for entertaining or simply enjoying the serenity. The luxurious main suite, two additional double bedrooms and a versatile dressing room or fourth bedroom provide flexible, elegant accommodation. Surrounding gardens are mature and thoughtfully designed, with the added bonus of a charming summerhouse available by separate negotiation. Just moments from the River Bure, local shops, and the vibrant heart of the Norfolk Broads, this is waterside village living at its very finest.

- Prime location on a peaceful and desirable road in Hoveton
- Extra-large gated driveway with parking for 4+ vehicles
- Beautifully landscaped gardens with vibrant spring planting and open field views
- Spacious, sunlit front lounge with front-garden outlook
- Stunning open-plan WREN kitchen/dining/living area with high-spec appliances
- Underfloor heating with Cardene flooring and smart voice-activated lighting throughout



M&B





M&B



# Regalis Brimbelow Road

Hoveton, Norwich

## The Location

Life in Hoveton and neighbouring Wroxham is the perfect merge of rural, waterside and everyday convenience. Known affectionately as the “Capital of the Broads,” this picturesque area offers a lifestyle that is both peaceful and vibrant, centred around the River Bure and the vast, interconnecting waterways of the Norfolk Broads, a designated Area of Outstanding Natural Beauty.

For those who love being near the water, the opportunities are endless. Residents enjoy everything from scenic boat trips and paddleboarding to sailing, fishing, and gentle riverside strolls. The ever-changing landscape of water, reedbeds and sky creates a backdrop that is both calming and inspiring, drawing nature lovers, artists, and photographers alike.

But there's far more to Hoveton than its beautiful waterways. The area is extremely well-served by local amenities, all within easy walking distance. The iconic Roys of Wroxham, a long-established and much-loved local institution, offers everything from groceries and clothing to homewares, hardware, and gardening supplies.

The villages boast a strong sense of community and offer excellent facilities, including cafés, traditional pubs, riverside restaurants, and fast-food outlets for casual dining. Good local schools, a medical centre, and a variety of independent shops mean you rarely need to travel far from home. For lovers of the outdoors, the surrounding countryside is a haven for walkers, birdwatchers, and cyclists, with miles of scenic routes through woodlands, meadows, and along the riverbanks.

M&B





# Regalis Brimbelow Road

Hoveton, Norwich

## Brimbelow Road, Hoveton

Set behind elegant double gates on a wide, welcoming driveway with space for four or more vehicles, this exceptional detached bungalow offers a rare opportunity to enjoy peaceful, modern living in the highly sought-after village of Hoveton. Fully renovated to the highest standard, the property is a celebration of light, space and effortless elegance, offering a tranquil setting just a short stroll from the village's thriving heart.

From the moment you arrive, the home exudes warmth and charm. The newly landscaped front garden bursts into colour come spring, with freshly planted hedging and vibrant flower beds creating an idyllic first impression. Bathed in full afternoon sun, this space is perfect for unwinding with a book or enjoying quiet conversation with friends. A delightful summerhouse sits nestled among the greenery, available for separate purchase, an ideal space for a studio, home office or simply a garden hideaway.

Step inside and you're greeted by interiors that are both contemporary and calming. Every room feels light and airy, thanks to thoughtful design and large windows that invite the outside in. The front-facing lounge is spacious and sunny, offering a peaceful spot to relax while enjoying views over the garden. Towards the rear of the home, the heart of the house reveals itself, an expansive, open-plan kitchen, dining, and lounge area that's tailor-made for entertaining.

Overlooking the private rear gardens and rolling open fields beyond, this space offers a perfect balance of privacy, comfort and flow.



M&B

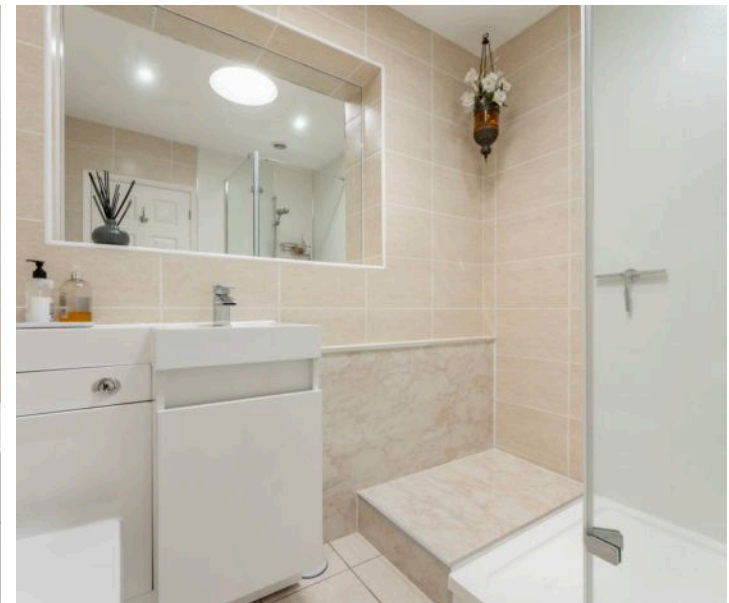
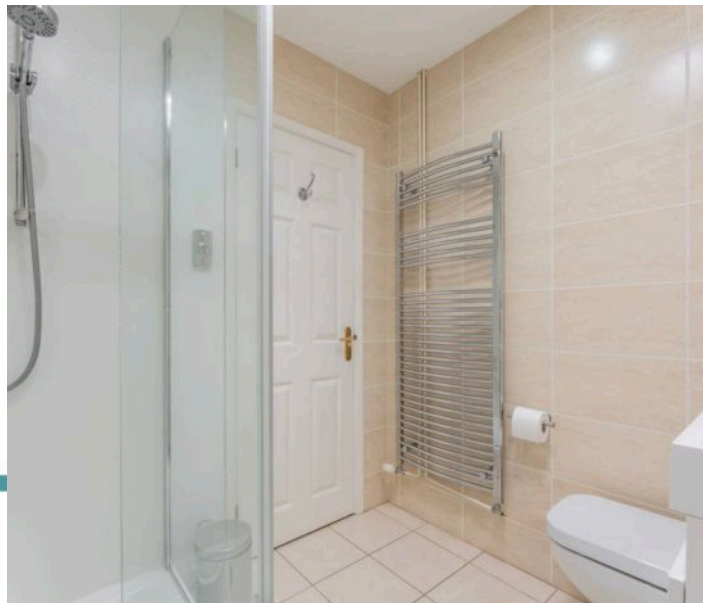
# Regalis Brimbelow Road

Hoveton, Norwich

The kitchen, designed by WREN, is both beautiful and functional, finished with sleek white Corian countertops, soft under-cabinet lighting and top-of-the-range integrated appliances including a Bosch dishwasher, AEG hob and warming drawer and NEFF oven and microwave. A separate utility area discreetly houses a washing machine and dryer, keeping the living spaces serene and uncluttered. Underfloor heating beneath the Cardene flooring ensures a cosy feel throughout, while smart lighting, including external sensor lights, can be voice activated for maximum ease and atmosphere. This home offers up to four bedrooms, including a truly luxurious main suite. This spacious bedroom leads into a dressing room (which could also serve as a fourth bedroom with door re-added), with fitted wardrobes in both rooms and patio doors that open onto the peaceful rear garden. The ensuite bathroom is beautifully appointed with underfloor heating, a large walk-in shower, separate bath and stylish fittings. The second bedroom, facing the front, offers generous proportions and built-in storage, while the third, currently used as an art room, features its own private entrance and patio doors leading to a sunlit outdoor seating area, making it perfect for guests, a studio, or even an annexe-style setup. A second, centrally located shower room is also newly refurbished, offering fresh, modern comfort for family and visitors alike.

The gardens surrounding the home are a true highlight, mature, private, and designed for low-maintenance enjoyment. The rear garden offers a secluded space with open field views that change beautifully with the seasons, adding a deep sense of serenity to everyday living. Whether hosting summer gatherings, enjoying a morning coffee in the sun, or simply soaking in the calm, every corner of this property invites you to slow down and savour the moment.

M&B





# Regalis Brimbelow Road

Hoveton, Norwich

This is not just a house — it's a lifestyle. A place to settle, to entertain, to create, and to enjoy. Whether you're seeking refined single-level living, a peaceful retreat, or simply a beautifully finished forever home in a prime Norfolk location, this Hoveton bungalow offers it all — and more.

## Agents Note

Sold Freehold

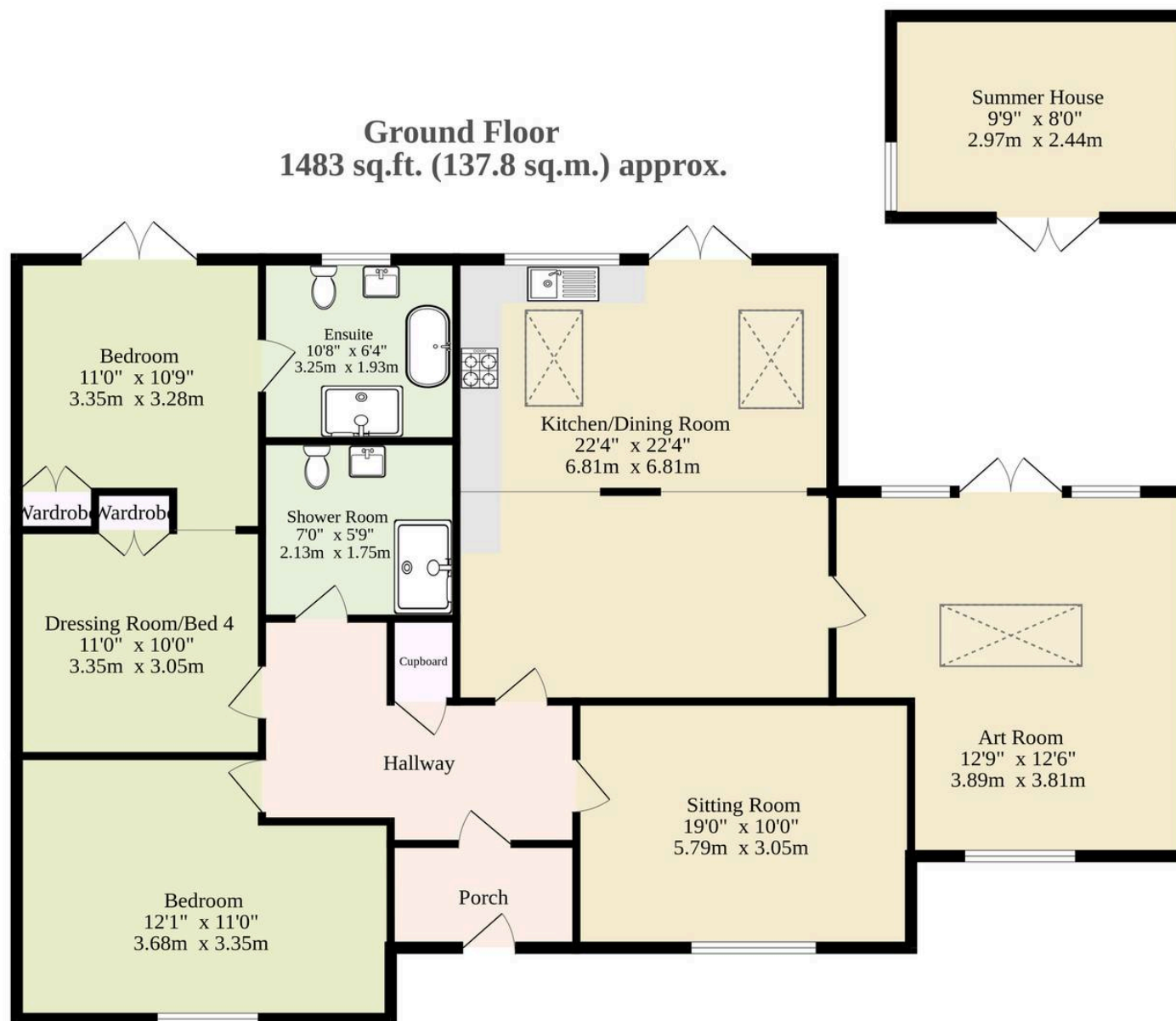
Connected to all mains services.



M&B



**Ground Floor**  
**1483 sq.ft. (137.8 sq.m.) approx.**



TOTAL FLOOR AREA : 1483 sq.ft. (137.8 sq.m.) approx.

Whilst every attempt has been made to ensure the accuracy of the floorplan contained here, measurements of doors, windows, rooms and any other items are approximate and no responsibility is taken for any error, omission or mis-statement. This plan is for illustrative purposes only and should be used as such by any prospective purchaser. The services, systems and appliances shown have not been tested and no guarantee as to their operability or efficiency can be given.  
 Made with Metropix ©2025



# Dreaming of this home? Let's make it a reality



Meet *Abi*  
Branch Partner



Meet *Karol*  
Property Valuer



Meet *Claire*  
Aftersales Team Leader

Minors & Brady  
*Your home, our market*



wroxham@minorsandbrady.co.uk



01603 784088



6 Church Road, Wroxham, Norwich, NR12 8UG

CAISTER-ON-SEA | DEREHAM | DISS | NORWICH | OULTON BROAD | WROXHAM





## How can we support

- ✓ Residential Mortgages
- ✓ Protection & Insurance
- ✓ Buy-to-let (personal and limited company)



**Matt Waters**  
Senior Mortgage  
and Protection Advisor



**Victoria Payne**  
Mortgage and  
Protection Advisor

Scan to book your  
appointment today



T: 01692 531372  
E: [enquiries@norfolk-mortgages.co.uk](mailto:enquiries@norfolk-mortgages.co.uk)