



Restholme Rectory Road, Bacton

Stowmarket



Minors & Brady

Restholme Rectory Road

Bacton, Stowmarket

Set on the peaceful edge of Bacton, Restholme is a striking 2,900 sqft extended bungalow that masterfully combines elegance, versatility, and breathtaking countryside views. Designed with multi-generational living in mind, it offers seven bedrooms, multiple reception spaces, and a self-contained annex for complete flexibility. At its heart, a spectacular open-plan Symphony kitchen with granite worktops creates a social hub where family life and entertaining flow seamlessly onto sunlit terraces overlooking rolling fields. Two sitting rooms and conservatories provide quiet environments, balancing open family spaces with quiet corners for privacy. Set within 0.4 acres (stms) of landscaped gardens, the property offers both grandeur and tranquillity, with ample parking and a sense of secluded rural charm. This is more than a home, it is a rare countryside sanctuary, crafted for those seeking space, style, and a lifestyle of understated luxury.

• Agents Note

Sold Freehold

Connected to mains water, electricity, oil-central heating and treatment plant.



M&B



M&B

Restholme Rectory Road

Bacton, Stowmarket

The Location

Perfectly positioned on the peaceful Rectory Road in the sought-after village of Bacton, Restholme enjoys a setting that balances idyllic countryside living with exceptional convenience. Surrounded by rolling Suffolk farmland and open fields, the location offers a sense of rural while remaining just moments from everyday amenities, including a well-regarded village shop, primary school, and traditional country pubs.

The nearby market town of Stowmarket provides a wider choice of shopping, dining, and leisure facilities, along with a mainline rail service to London Liverpool Street, making this an ideal base for commuters seeking a more relaxed pace of life.

With its unspoilt natural surroundings, strong community feel, and easy connections to the A14 and the Suffolk coast, this is a location that promises both seclusion and accessibility, a rare combination in such a picturesque setting.



M&B

Restholme Rectory Road

Bacton, Stowmarket

Rectory Road, Bacton

Set on the tranquil outskirts of the charming village of Bacton, this remarkable 2,900 sqft bungalow embodies space, style, and flexibility in perfect harmony. Designed for dual-generation living or a large, growing family, this beautifully extended home sits gracefully within private gardens of just over 0.4 acres (stms), enjoying panoramic, uninterrupted field views that stretch far into the horizon. With its blend of modern elegance, timeless charm, and practical versatility, it offers a lifestyle that is as luxurious as it is functional, with a subtle countryside aesthetic woven throughout.

From the moment you arrive, the property exudes a sense of calm and grandeur. A sweeping driveway provides ample parking and turning space for multiple vehicles, leading to the heart of a home that has been meticulously enhanced to create a rare living environment—one that adapts effortlessly to the rhythm of family life while offering secluded corners for privacy.

At the centre of this residence lies a truly spectacular open-plan kitchen, dining, and family room, a space that captures both light and atmosphere in abundance. This show-stopping hub features a bespoke Symphony kitchen, finished with luxurious granite worktops, high-quality integrated appliances and a large, elegant island, illuminated by three striking statement pendant lights that create a warm, inviting glow as evening falls.



M&B

Restholme Rectory Road

Bacton, Stowmarket

Perfect for lively gatherings, morning coffee rituals, and long, indulgent evenings with friends, this is a kitchen made not just for cooking, but for living—a statement space that defines the home's character.

Expansive bi-fold doors frame sweeping countryside views and invite the outdoors in, opening directly onto a sun-soaked terrace where dining under the stars or long summer afternoons with family become an everyday indulgence. Thoughtfully chosen finishes and a soft, natural colour palette subtly nod to the home's rural setting, creating a harmonious blend of contemporary design and countryside charm.

Beyond the kitchen, the property unfolds into two generous sitting rooms, offering refined spaces for quiet evenings, movie nights, or formal entertaining. The flow of the layout creates an effortless connection between rooms, with two conservatories adding versatility, ideal as garden rooms, reading nooks, or creative retreats bathed in natural light.

Every aspect of the home has been thoughtfully arranged to provide both togetherness and individual space, adapting seamlessly to the needs of modern family life.

With seven bedrooms in total, complemented by a stylish family bathroom and two well-appointed shower rooms, the home offers abundant space for every member of the household to enjoy comfort and privacy.



M&B

Restholme Rectory Road

Bacton, Stowmarket

The main bathroom elevates everyday living with its timeless, classic sanitaryware, a stunning freestanding bath that takes centre stage, patterned floor tiles that reflect today's most elegant interior trends, and a heated towel rail adding a touch of luxury. This is a space designed for relaxation, where every detail feels carefully considered.

Adding to its exceptional versatility is a self-contained annex, complete with its own private entrance, kitchen, sitting room, cloakroom, two of the seven bedrooms, and two conservatories. Perfect for multi-generational living, visiting guests, or even private rental potential, this independent wing of the property provides the freedom of separate living quarters while remaining harmoniously connected to the main residence.

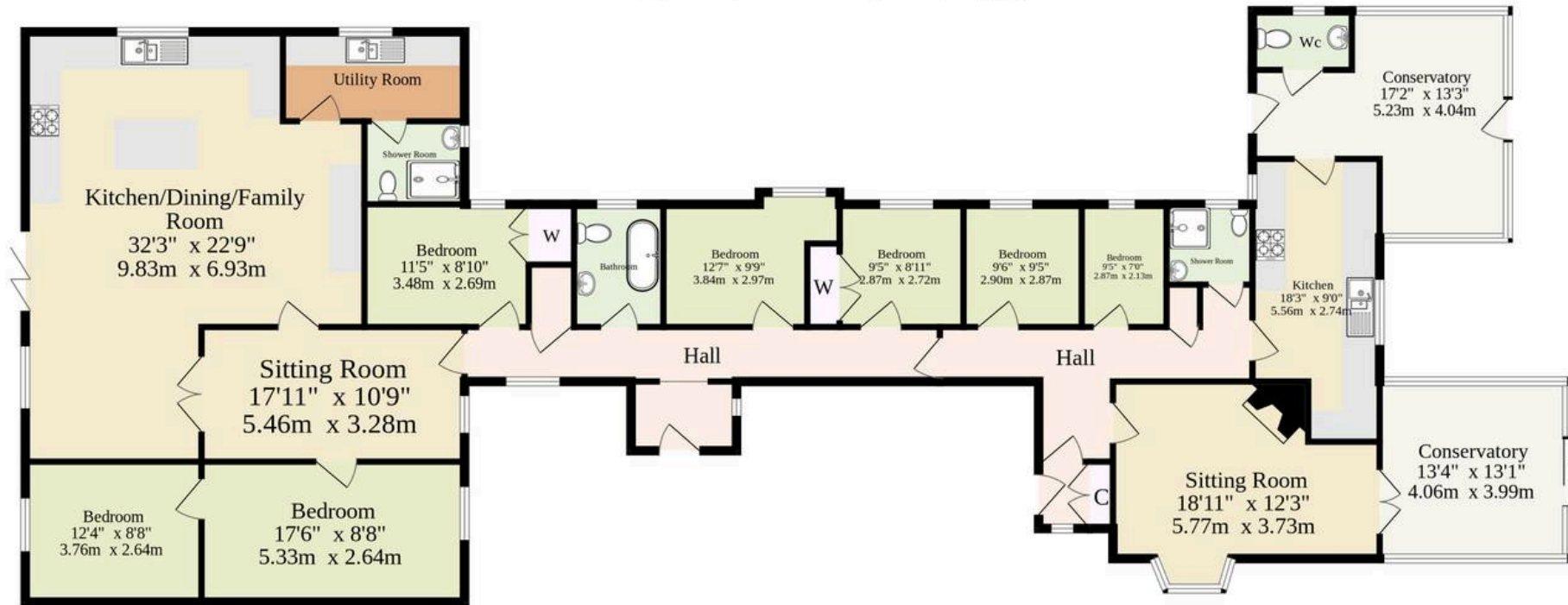
Set within generous landscaped gardens, the property offers a sense of serenity rarely found in such a convenient village location. Expanses of lawn, mature trees and thoughtfully planted borders create a natural sanctuary, while large paved terraces provide elegant settings for dining, evening drinks or quiet contemplation of the countryside beyond. The uninterrupted field views are truly breathtaking, shifting with the seasons to offer a backdrop of ever-changing natural beauty.

This impressively extended bungalow combines space, style, and flexibility on a scale seldom available. Whether you dream of a home that brings multiple generations together under one roof, a property that adapts to your changing needs, or simply a peaceful sanctuary with every modern comfort, this home delivers it all—with a touch of understated luxury, a real countryside aesthetic, and a connection to nature that is nothing short of inspiring.

M&B



Ground Floor 2920 sq.ft. (271.3 sq.m.) approx.



TOTAL FLOOR AREA : 2920 sq.ft. (271.3 sq.m.) approx.

Whilst every attempt has been made to ensure the accuracy of the floorplan contained here, measurements of doors, windows, rooms and any other items are approximate and no responsibility is taken for any error, omission or mis-statement. This plan is for illustrative purposes only and should be used as such by any prospective purchaser. The services, systems and appliances shown have not been tested and no guarantee as to their operability or efficiency can be given.
Made with Metropix ©2025

Dreaming of this home? Let's make it a reality



Meet *Nicola*
Branch Manager



Meet *Theo*
Property Consultant



Meet *Anya*
Aftersales Progressor

Minors & Brady
Your home, our market

 diss@minorsandbrady.co.uk

 01379 771444

 46-47 Mere Street, Diss, IP22 4AG

CAISTER-ON-SEA | DEREHAM | DISS | NORWICH | OULTON BROAD | WROXHAM



How can we support

- ✓ Residential Mortgages
- ✓ Protection & Insurance
- ✓ Buy-to-let (personal and limited company)



Matt Waters
Senior Mortgage
and Protection Advisor



Victoria Payne
Mortgage and
Protection Advisor

Scan to book your
appointment today



T: 01692 531372
E: enquiries@norfolk-mortgages.co.uk