



19 Wordsworth Road, Norwich

£335,000 Freehold

This extended four-bedroom semi-detached home on Wordsworth Road offers a stylish and flexible layout, perfectly suited to modern family living.

This extended four-bedroom semi-detached home on Wordsworth Road offers a stylish and flexible layout, perfectly suited to modern family living. Ideally located close to the University of East Anglia and Norfolk and Norwich Hospital, it combines excellent connectivity with a comfortable residential setting. The contemporary Wren kitchen, sunlit lounge, and versatile ground-floor bedroom with en suite provide both practicality and charm. Upstairs, three well-proportioned bedrooms, a sleek bathroom, and thoughtful storage solutions cater to the demands of busy daily life. Outside, the low-maintenance garden with decked seating and soft lighting creates a relaxed setting for alfresco evenings. With driveway parking and an easy-care frontage, this home supports a lifestyle where everything feels close, effortless, and well-considered.

The Location

Located in the heart of a well-connected and thriving community, Wordsworth Road, Norwich offers the perfect balance of convenience and



This extended four-bedroom semi-detached home on Wordsworth Road offers a stylish and flexible layout, perfectly suited to modern family living. Ideally located close to the University of East Anglia and Norfolk and Norwich Hospital, it combines excellent connectivity with a comfortable residential setting. The contemporary Wren kitchen, sunlit lounge, and versatile ground-floor bedroom with en suite provide both practicality and charm. Upstairs, three well-proportioned bedrooms, a sleek bathroom, and thoughtful storage solutions cater to the demands of



This extended four-bedroom semi-detached home on Wordsworth Road offers a stylish and flexible layout, perfectly suited to modern family living. Ideally located close to the University of East Anglia and Norfolk and Norwich Hospital, it combines excellent connectivity with a comfortable residential setting. The contemporary Wren kitchen, sunlit lounge, and versatile ground-floor bedroom with en suite provide both practicality and charm. Upstairs, three well-proportioned bedrooms, a sleek bathroom, and thoughtful storage solutions cater to the demands of busy daily life. Outside, the low-maintenance garden with decked seating and soft lighting creates a relaxed setting for alfresco evenings. With driveway parking and an easy-care frontage, this home supports a lifestyle where everything feels close, effortless, and well-considered.

The Location

Located in the heart of a well-connected and thriving community, Wordsworth Road, Norwich offers the perfect balance of convenience and comfort. Set within a popular residential area, this address enjoys excellent transport links, with smooth access to the A47 and Norwich city centre, making daily commuting straightforward. The property lies just a short distance from the University of East Anglia (UEA), Norfolk and Norwich University Hospital, and key business zones –appealing to professionals, students, and families alike. Within close reach are a wide range of everyday essentials, including major supermarkets, reputable schools, local parks, and a variety of leisure options, ensuring day-to-day life runs with ease. With a strong community feel and a welcome mix of city convenience and green open spaces, Wordsworth Road continues to attract those keen to enjoy the very best of Norwich living.

Wordsworth Road

Perfectly placed within easy reach of the University of East Anglia and the Norfolk and Norwich Hospital, this extended four-bedroom semi-detached home combines everyday convenience with carefully considered living spaces.

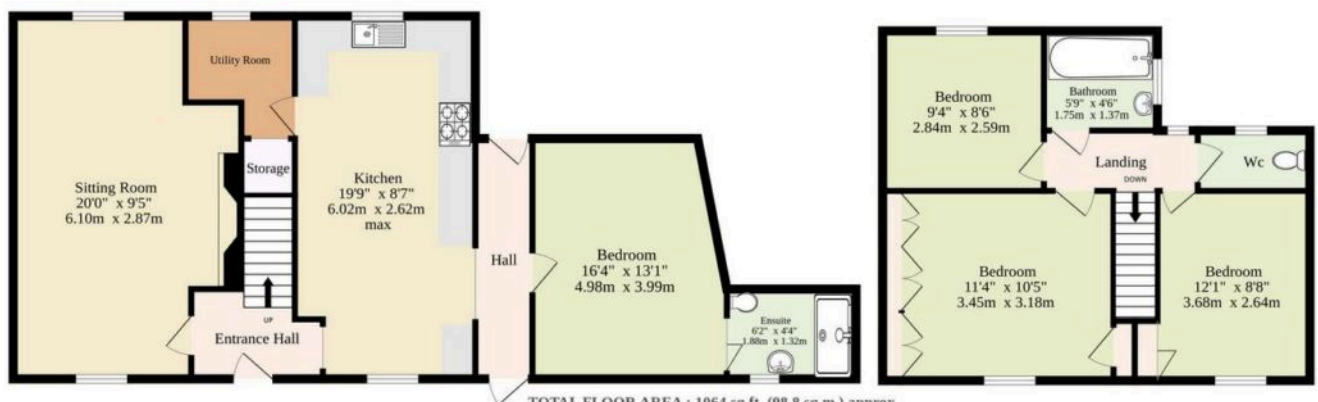
Positioned in one of the city's most desirable residential pockets, this property presents an outstanding opportunity for families, professionals, or investors seeking versatile accommodation and modern finishes in equal measure.

The ground floor unfolds with a spacious entrance hall leading into a dual-aspect lounge filled with natural light, complemented by a stylish electric feature fireplace and a warm, welcoming atmosphere. At the heart of the home lies a contemporary Wren kitchen, thoughtfully designed with sleek quartz worktops, integrated appliances, and ample storage. all framed by front and rear garden views.



Ground Floor
689 sq.ft. (64.0 sq.m.) approx.

1st Floor
375 sq.ft. (34.8 sq.m.) approx.



TOTAL FLOOR AREA : 1064 sq.ft. (98.8 sq.m.) approx.

Whilst every attempt has been made to ensure the accuracy of the floorplan contained here, measurements of doors, windows, rooms and any other items are approximate and no responsibility is taken for any error, omission or mis-statement. This plan is for illustrative purposes only and should be used as such by any prospective purchaser. The services, systems and appliances shown have not been tested and no guarantee as to their operability or efficiency can be given.
Made with Metropix ©2025

You can include any text here. The text can be modified upon generating your brochure.

You can include any text here. The text can be modified upon generating your brochure.

