



22 Sentinel House Surrey Street, Norwich

Norwich



Minors & Brady



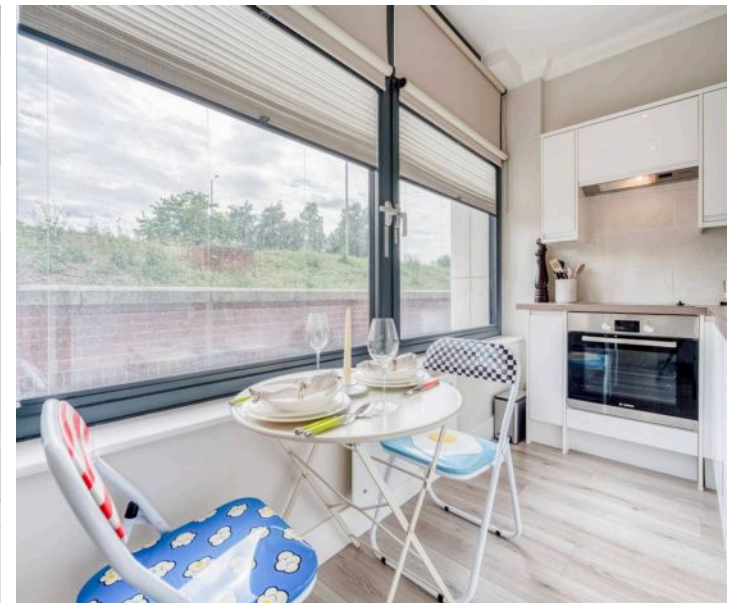
# 22 Sentinel House Surrey Street

## Norwich

Craving convenience and understated modern living? This impeccably designed one-bedroom apartment at Sentinel House delivers both in the heart of Norwich city centre. Featuring a bright, open-plan living space with sleek blackout blinds and a contemporary L-shaped kitchen with integrated appliances, it offers effortless style. The double bedroom includes built-in wardrobes, while the luxurious four-piece bathroom by Norwich Bathrooms brings a spa-like touch to everyday living. Residents enjoy exclusive perks such as a concierge service, on-site gym, and secure parking available to rent. Just steps from Norwich's vibrant shops, cafés, and cultural attractions, and with excellent transport links, this property is the perfect city sanctuary for commuters and modern urbanites alike.

- Prime city-centre location on Surrey Street, moments from shops, cafés, and cultural attractions
- Stylish open-plan living space with bright, airy interiors and blackout blinds
- Contemporary L-shaped kitchen with sleek white gloss units and integrated appliances
- Integrated washer/dryer and undersink dishwasher for ultimate convenience
- Main double bedroom and built in storage
- Luxury four-piece bathroom designed by Norwich Bathrooms, offering a spa-like feel
- Turnkey condition – rarely used and immaculately presented throughout
- Exclusive resident amenities, including concierge service and a fully equipped gym
- Secure car parking available to rent, providing added convenience for city living

M&B







M&B



# 22 Sentinel House Surrey Street

Norwich

## Sentinel House, Surrey Street, Norwich

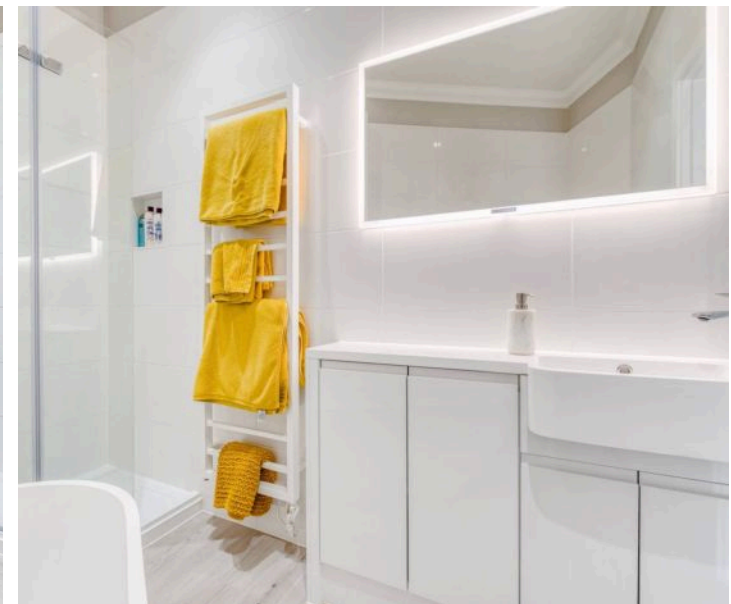
Step into this meticulously designed one-bedroom apartment at Sentinel House, a striking statement in modern city living. Perfectly positioned for those who crave convenience without compromising on style, this residence combines sleek, contemporary finishes with thoughtful features to create a true turnkey home.

From the moment you enter, the entrance hall sets the tone for what lies beyond. The open-plan living space is designed for modern lifestyles, featuring a bright and airy sitting area complemented by blackout blinds for ultimate comfort. A dining nook provides the ideal setting for intimate dinners or casual entertaining, while large windows bathe the space in natural light, enhancing its fresh, contemporary feel.

The L-shaped kitchen is a masterclass in minimalist design, with white high-gloss cabinetry and premium integrated appliances, including an oven, hob, washer/dryer and an undersink dishwasher, all in immaculate, rarely-used condition. Whether you're an avid cook or prefer low-maintenance living, this space caters to every need.

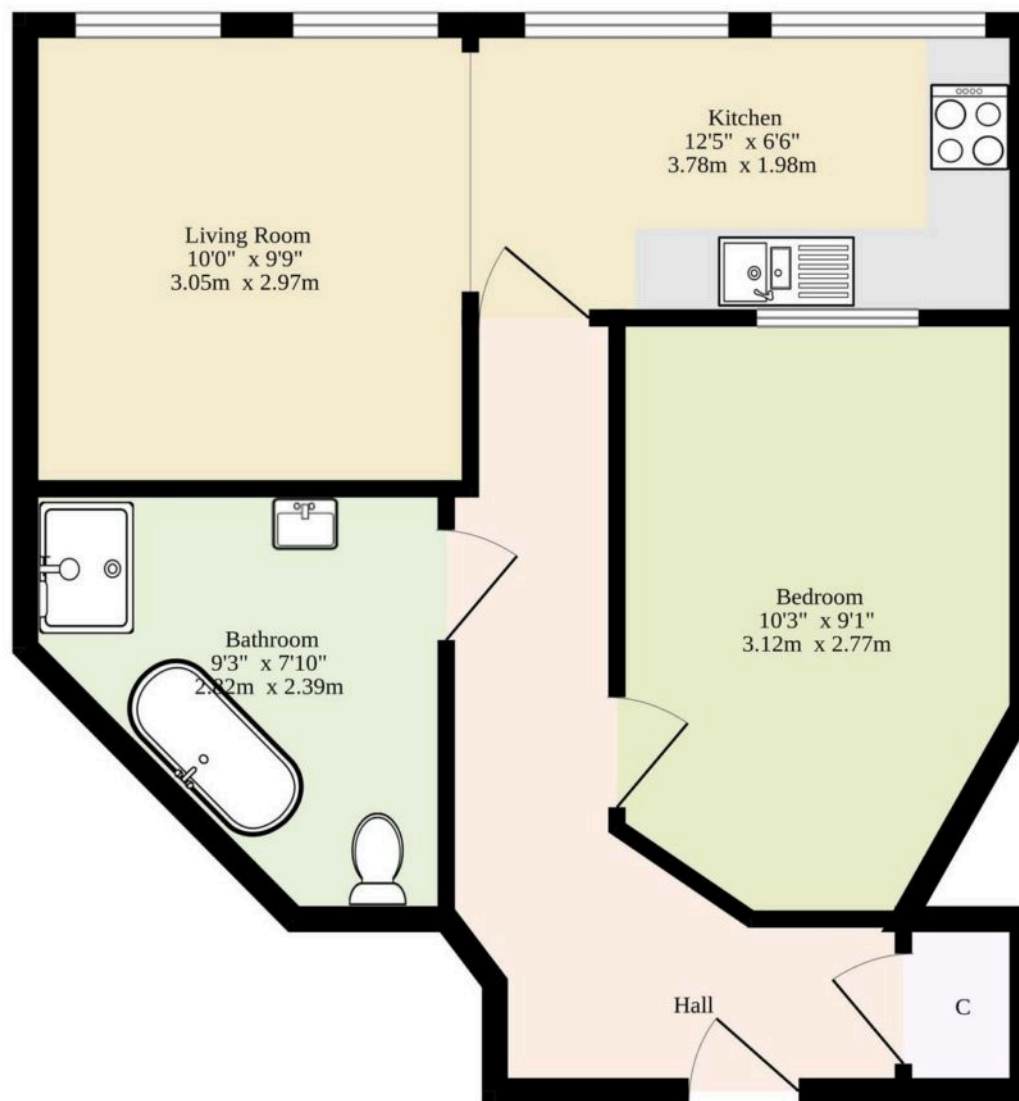
The main double bedroom is complete with built-in wardrobes for streamlined storage, while the neutral palette ensures a calm and restful atmosphere. Completing the home is a truly stunning four-piece bathroom, curated by Norwich Bathrooms, where luxurious finishes and contemporary design combine to create a spa-like retreat.

Residents of Sentinel House benefit from a host of exclusive amenities, including a concierge service, fully equipped gym, and secure car parking available to rent. Ideally located for commuters and those seeking the vibrancy of city-centre living, this apartment is the ultimate blend of style, convenience, and modern comfort.



M&B

**Ground Floor**  
**404 sq.ft. (37.5 sq.m.) approx.**



**TOTAL FLOOR AREA : 404 sq.ft. (37.5 sq.m.) approx.**

Whilst every attempt has been made to ensure the accuracy of the floorplan contained here, measurements of doors, windows, rooms and any other items are approximate and no responsibility is taken for any error, omission or mis-statement. This plan is for illustrative purposes only and should be used as such by any prospective purchaser. The services, systems and appliances shown have not been tested and no guarantee as to their operability or efficiency can be given.  
Made with Metropix ©2025

# Dreaming of this home?

## Let's make it a reality



Meet *Liam*  
Branch Manager



Meet *Rosie*  
Senior Sales Progressor



Meet *Tristan*  
Senior Property Valuer

Minors & Brady  
*Your home, our market*

 [norwich@minorsandbrady.co.uk](mailto:norwich@minorsandbrady.co.uk)

 01603 365085

 107 Unthank Road, Norwich, NR2 2PE

CAISTER-ON-SEA | DEREHAM | DISS | NORWICH | OULTON BROAD | WROXHAM





## How can we support

- ✓ Residential Mortgages
- ✓ Protection & Insurance
- ✓ Buy-to-let (personal and limited company)



**Matt Waters**  
Senior Mortgage  
and Protection Advisor



**Victoria Payne**  
Mortgage and  
Protection Advisor

Scan to book your  
appointment today



T: 01692 531372  
E: [enquiries@norfolk-mortgages.co.uk](mailto:enquiries@norfolk-mortgages.co.uk)