



18 Alma Road, Lowestoft

Lowestoft



£110,000  
Minors & Brady

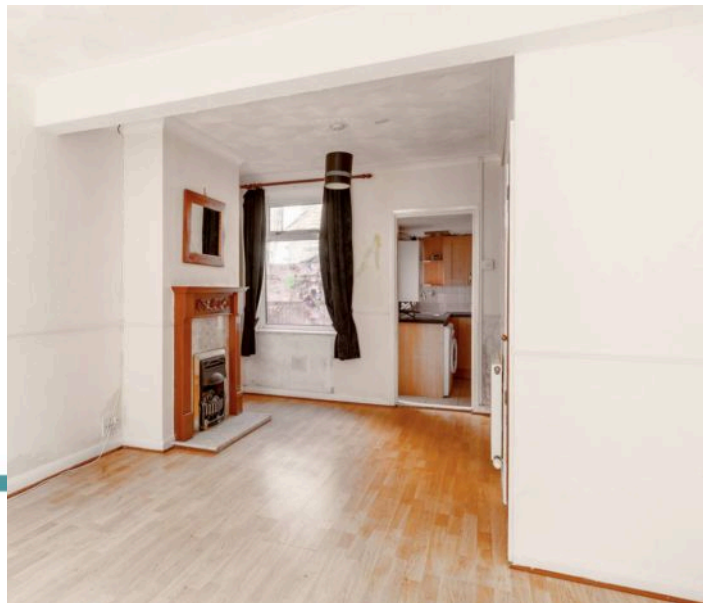
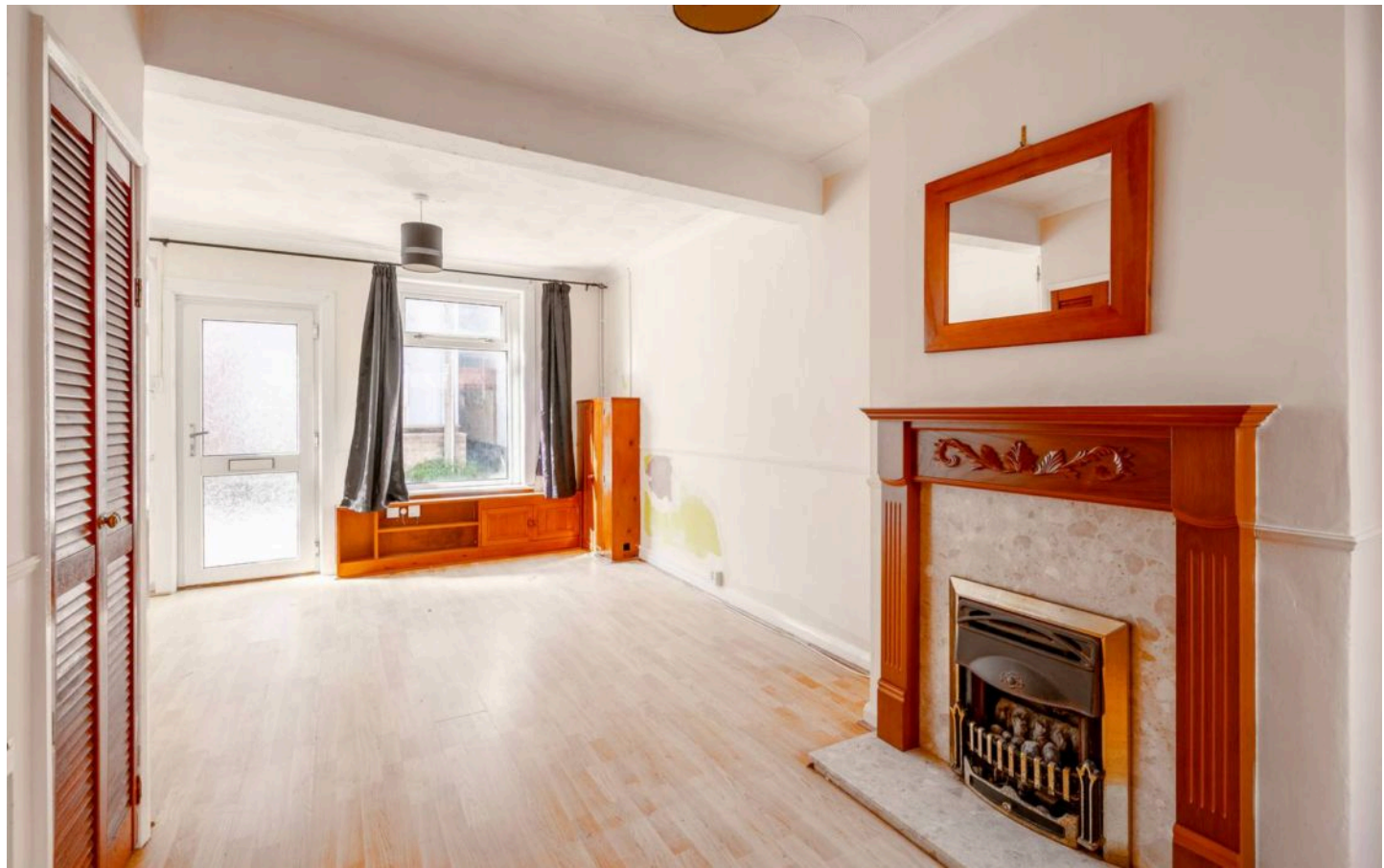


# 18 Alma Road

## Lowestoft

In the coastal town of Lowestoft, this charming mid-terrace home is an ideal choice for first-time buyers or investors. Featuring a spacious open-plan sitting and dining room with a decorative feature fireplace, the property offers a welcoming space for relaxation and entertaining. The well-equipped kitchen includes fitted cabinetry, a freestanding oven, a washing machine, and space for a fridge/freezer. Upstairs, there are two bedrooms and a bathroom, while outside, the courtyard is low-maintenance. With on-road parking available and the beach and amenities nearby, this home offers a comfortable and convenient coastal lifestyle.

- Mid-terrace residence positioned in the coastal town of Lowestoft
- Perfect choice for first time buyers or investors!
- Open-plan sitting/dining room accentuated by a decorative feature fireplace, inviting relaxation and entertaining
- Kitchen fitted with cabinetry, a freestanding oven, a washing machine and space for a fridge/freezer
- Two bedrooms and a bathroom
- Low-maintenance courtyard
- On-road parking available
- Close to local shops, schools, healthcare facilities and transport links







M&B



# 18 Alma Road

Lowestoft

## Location

Alma Road is a residential street located in the coastal town of Lowestoft, Suffolk, known for its friendly community and proximity to the town centre. The area is well-served by a range of local shops including convenience stores, small supermarkets, and independent retailers, providing residents with easy access to everyday essentials. For schooling, there are several nearby options, such as primary schools within walking distance and secondary schools a short bus or car ride away, catering well to families. Healthcare facilities are readily accessible, with local GP surgeries close by and Lowestoft Hospital within a short drive, offering a broad range of medical services. Transport links from Alma Road are convenient; Lowestoft railway station is nearby, offering regular trains to Ipswich and Norwich, while bus routes connect the area to other parts of the town and surrounding villages.



M&B



# 18 Alma Road

Lowestoft

Step inside to discover a welcoming open-plan sitting and dining room, a bright and airy space designed for both relaxation and social gatherings. A decorative feature fireplace adds character and warmth, creating a central focal point that enhances the homely atmosphere—perfect for cosy evenings in or entertaining friends.

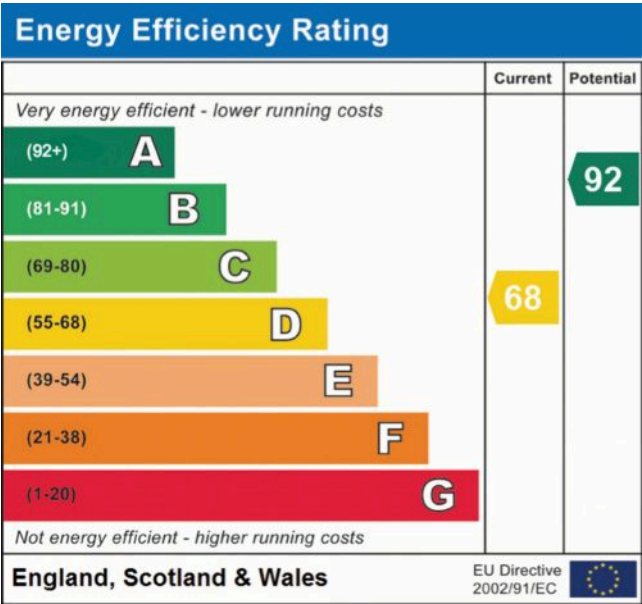
The adjoining kitchen is thoughtfully laid out, complete with fitted cabinetry offering storage, a freestanding oven, a washing machine, and space for a fridge/freezer.

Upstairs, the home presents two bedrooms and a bathroom, providing the essentials for comfortable living. Each room enjoys natural light and a sense of calm, ready for you to make it your own.

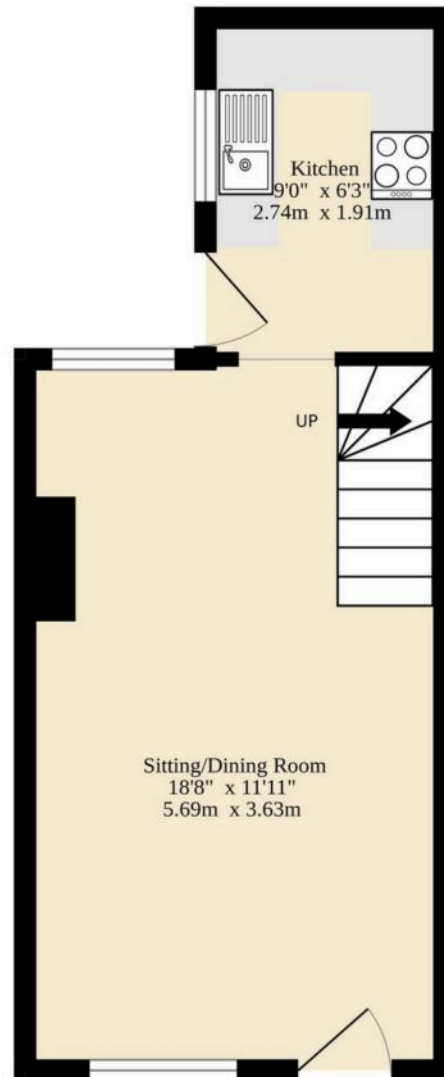
Outside, the property benefits from a low-maintenance courtyard garden—a private and manageable outdoor space. On-road parking is available, adding further convenience to this residence

Agents note

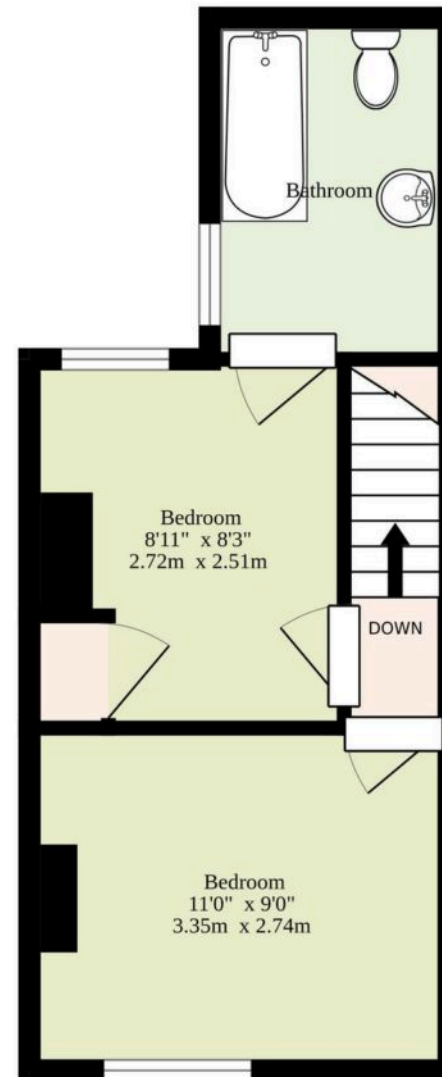
Freehold



Ground Floor  
278 sq.ft. (25.8 sq.m.) approx.



1st Floor  
172 sq.ft. (16.0 sq.m.) approx.



Sqft Does Not Include The Bathroom

TOTAL FLOOR AREA : 450 sq.ft. (41.8 sq.m.) approx.

Whilst every attempt has been made to ensure the accuracy of the floorplan contained here, measurements of doors, windows, rooms and any other items are approximate and no responsibility is taken for any error, omission or mis-statement. This plan is for illustrative purposes only and should be used as such by any prospective purchaser. The services, systems and appliances shown have not been tested and no guarantee as to their operability or efficiency can be given.  
Made with Metropix ©2025



# Dreaming of this home? Let's make it a reality



Meet *Macey*  
Branch Manager



Meet *Bradley*  
Property Valuer



Meet *Hannah*  
Property Consultant

Minors & Brady  
*Your home, our market*



[oultonbroad@minorsandbrady.co.uk](mailto:oultonbroad@minorsandbrady.co.uk)



01502 447788



Ivy Lane, Oulton Broad, NR33 8QH

CAISTER-ON-SEA | DEREHAM | DISS | NORWICH | OULTON BROAD | WROXHAM



## How can we support

- ✓ Residential Mortgages
- ✓ Protection & Insurance
- ✓ Buy-to-let (personal and limited company)



**Matt Waters**  
Senior Mortgage  
and Protection Advisor



**Victoria Payne**  
Mortgage and  
Protection Advisor

Scan to book your  
appointment today



T: 01692 531372  
E: [enquiries@norfolk-mortgages.co.uk](mailto:enquiries@norfolk-mortgages.co.uk)