



49 Kevill Davis Drive, Little Plumstead

Norwich



Minors & Brady

49 Kevill Davis Drive

Little Plumstead, Norwich

Overlooking a peaceful green woodland area, this attractive three-bedroom townhouse combines modern living with a quiet setting. The home features a bright and welcoming lounge, flowing seamlessly into a contemporary kitchen and dining space, ideal for family life or entertaining. Two double bedrooms with an en-suite and a family bathroom are located on the first floor, while the top-floor master suite offers its own en-suite and dressing area. Outside, a landscaped private garden with seating areas provides a perfect space for relaxation. Set in a charming village with picturesque countryside, local schools, and community amenities, the location offers both convenience and a strong sense of community. Excellent transport links ensure easy access to Norwich and nearby natural attractions, making this property a perfect blend of comfort, style, and village living.





M&B

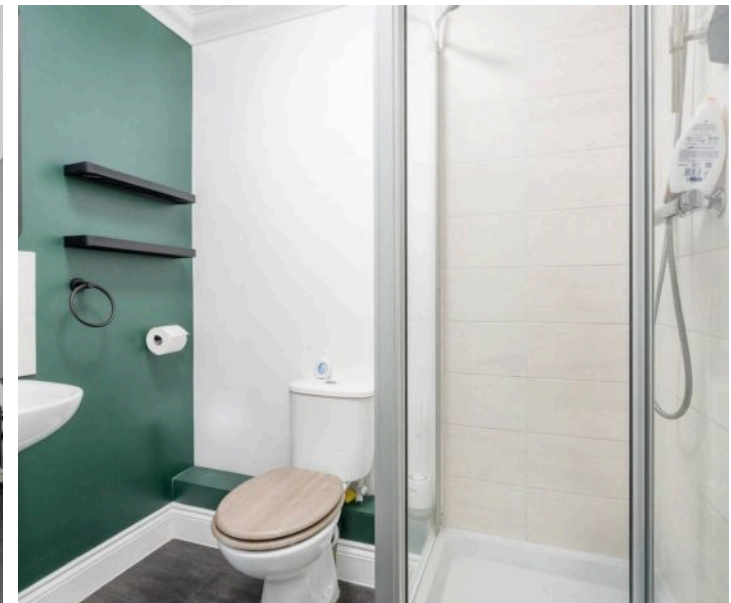
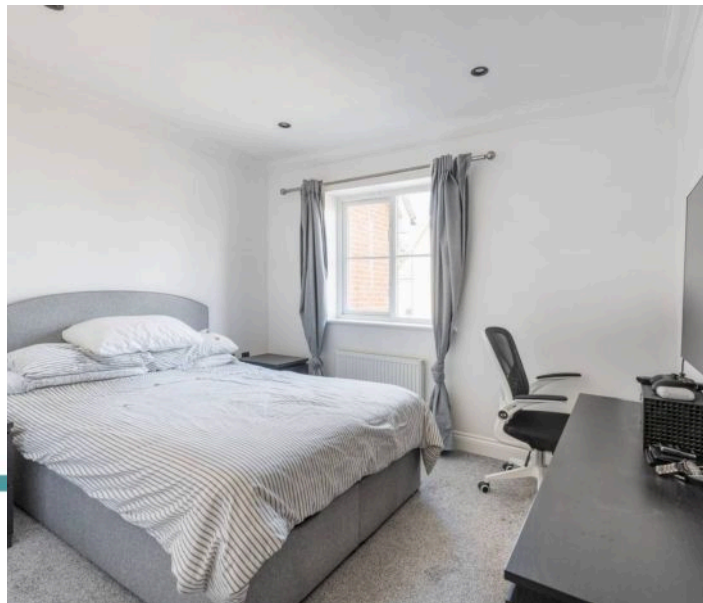
49 Kevill Davis Drive

Little Plumstead, Norwich

The Location

Positioned in a charming village setting, this property enjoys a peaceful yet convenient location with easy access to modern amenities. The area is surrounded by picturesque countryside, offering scenic views and plenty of opportunities for outdoor activities, including walks, cycling, and exploration of nearby natural attractions such as The Broads National Park.

Families will appreciate the strong sense of community, well-regarded local schools, and nearby playgrounds, making it an ideal environment for children to grow and play. For commuters and city-goers, excellent transport links provide easy access to Norwich, where a vibrant mix of shopping, dining, entertainment, and cultural attractions awaits. The village also offers local shops, cafes, and community facilities, combining the tranquility of rural life with the convenience of modern living.



M&B

49 Kevill Davis Drive

Little Plumstead, Norwich

Kevill Davis Drive, Little Plumstead

An attractive three-bedroom townhouse set in a popular development in Little Plumstead, this home enjoys a peaceful setting overlooking a green woodland area. The property offers a contemporary feel throughout, with a spacious kitchen/dining room that's perfect for family life or entertaining guests.

The living space is bright and welcoming, with a comfortable lounge area and an open connection to the dining space. The kitchen is modern and well-equipped, providing ample storage and work surfaces, while the rear doors open onto a private garden, ideal for relaxing or social gatherings.

Upstairs, there are two double bedrooms, one of which features an en-suite, along with a family bathroom. The top floor is dedicated to the master suite, complete with its own en-suite and dressing area, offering views of the surrounding greenery.

Outside, the property benefits from a landscaped garden with seating areas, providing an elevated stance. Conveniently located within easy reach of Norwich and local amenities, this townhouse offers a perfect blend of modern living and peaceful surroundings.

Agents Note

Sold Freehold

Connected to all mains services.

Maintenance: £150 paid annually



M&B

Ground Floor
577 sq.ft. (53.6 sq.m.) approx.



1st Floor
430 sq.ft. (39.9 sq.m.) approx.



2nd Floor
280 sq.ft. (26.0 sq.m.) approx.



TOTAL FLOOR AREA : 1287 sq.ft. (119.6 sq.m.) approx.

Whilst every attempt has been made to ensure the accuracy of the floorplan contained here, measurements of doors, windows, rooms and any other items are approximate and no responsibility is taken for any error, omission or mis-statement. This plan is for illustrative purposes only and should be used as such by any prospective purchaser. The services, systems and appliances shown have not been tested and no guarantee as to their operability or efficiency can be given.

Made with Metropix ©2025

Dreaming of this home? Let's make it a reality



Meet *Abi*
Branch Partner



Meet *Karol*
Property Valuer



Meet *Claire*
Aftersales Team Leader

Minors & Brady
Your home, our market



wroxham@minorsandbrady.co.uk



01603 784088



6 Church Road, Wroxham, Norwich, NR12 8UG

CAISTER-ON-SEA | DEREHAM | DISS | NORWICH | OULTON BROAD | WROXHAM



How can we support

- ✓ Residential Mortgages
- ✓ Protection & Insurance
- ✓ Buy-to-let (personal and limited company)



Matt Waters
Senior Mortgage
and Protection Advisor



Victoria Payne
Mortgage and
Protection Advisor

Scan to book your
appointment today



T: 01692 531372
E: enquiries@norfolk-mortgages.co.uk