



20 Mill Road, Hethersett
Norwich



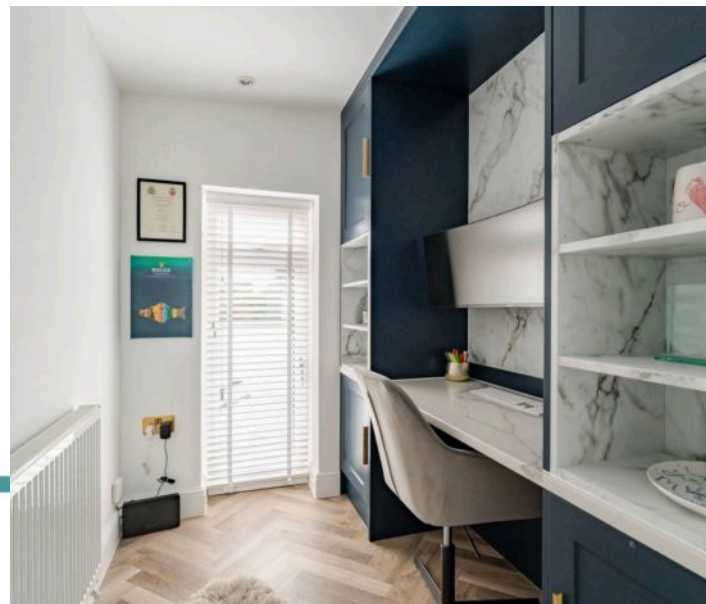
Minors & Brady

20 Mill Road

Hethersett, Norwich

Every so often, a home comes to market that redefines everyday expectations. Renovated to an impeccable standard, this Hethersett property is the result of a complete transformation, every surface, fixture and detail has been reimagined with an emphasis on quality, style and function. From the perfectly composed exterior with its rendered façade, elegant cladding and sweeping in-and-out driveway, this is a home that delivers luxury without compromise. Inside, the flow is effortless, with each room designed not just to be seen, but to be lived in. High-end finishes, bespoke features and a palette of timeless materials create an atmosphere that feels both refined and welcoming. The outdoor spaces are equally impressive, with landscaped gardens, a decked entertaining area, and an optional hot tub all set within complete privacy. This is more than a property, it is a home that elevates the everyday, offering the rare combination of luxurious detail, and modern practicality in one of Norfolk's most desirable village settings.

M&B





20 Mill Road

Hethersett, Norwich

The Location

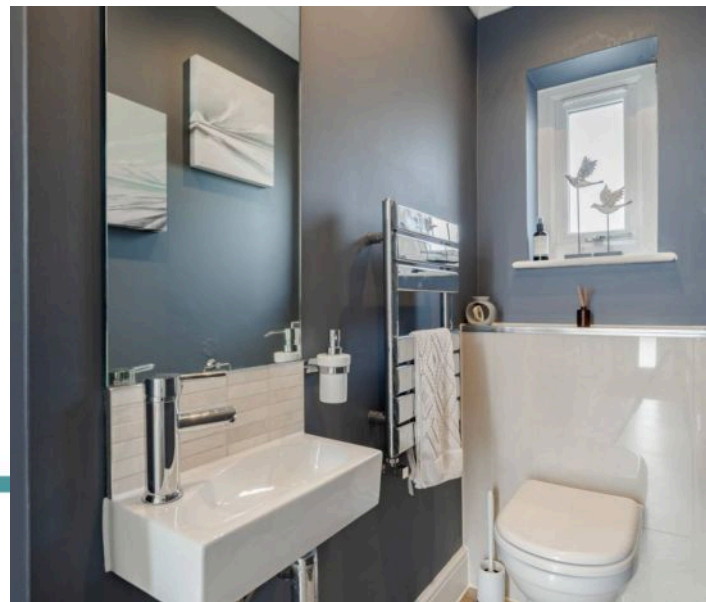
Situated in one of Norfolk's most well-regarded villages, this home enjoys a location that perfectly balances community spirit with modern convenience. Just a short stroll away lies a park with a large recreation field, ideal for everything from morning dog walks to children's football matches.

Everyday essentials are close at hand, with a well-stocked convenience shop in the village, alongside a Tesco, Co-op and Boots. The Kings Head pub offers a warm, traditional setting for dinner or drinks, while Esquires Café has become a go-to spot for breakfast, lunch or a perfectly made coffee.

For those who appreciate locally sourced produce, the nearby farm shop is a real treasure, its bakery turns out irresistible sweet treats and the on-site butchery provides quality cuts. The village is also home to well-regarded schools and an active village hall hosting a range of events throughout the year.

Just a few minutes away in the market town of Wymondham, you'll find further amenities including Waitrose and Lidl, complementing the already excellent local shopping options.

Transport links are a particular strength. Regular bus services connect Hethersett to surrounding areas, while the A11 and A47 are easily accessible, placing the Norfolk coast, countryside, and further destinations within comfortable reach. Norwich city centre is just 15 minutes away, offering an array of shops, restaurants, galleries, and cultural attractions.



20 Mill Road

Hethersett, Norwich

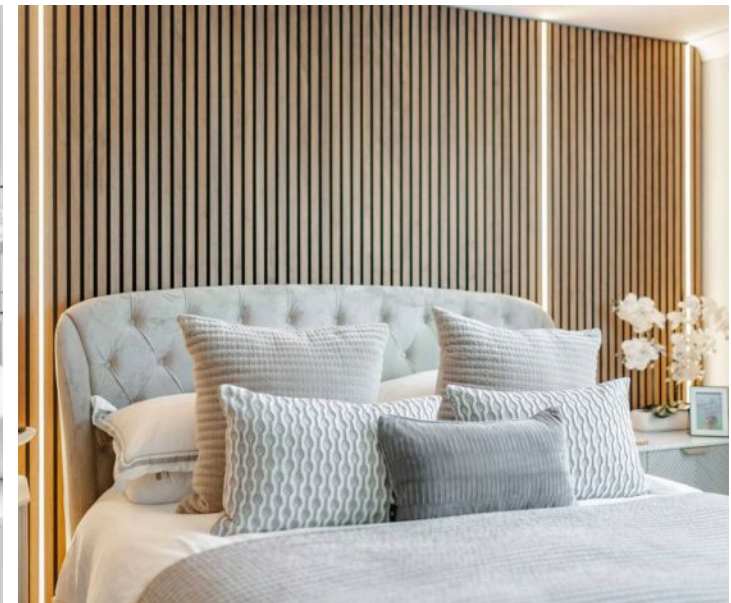
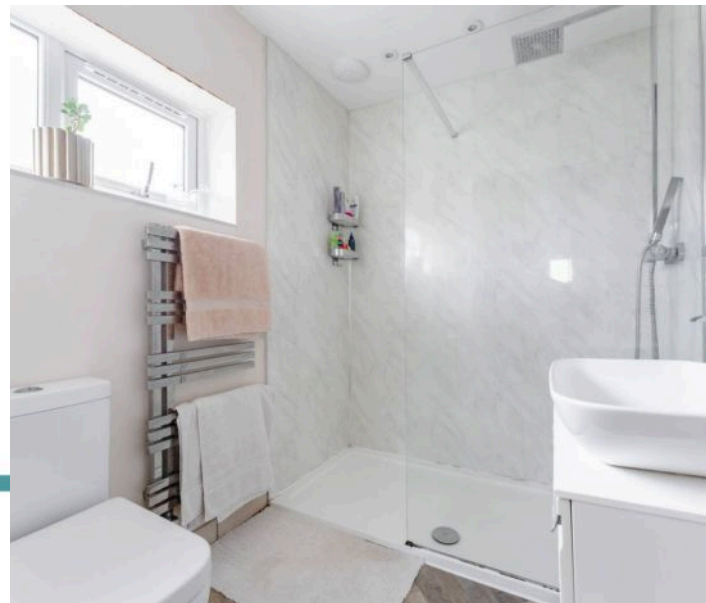
Mill Road, Hethersett

From the moment you approach, this home makes a statement. Its rendered frontage and elegant cladding catch the eye, while a brickweaved in-and-out driveway leads to a garage discreetly positioned to the side. Attractive external lighting highlights the façade in the evenings, adding an extra layer of sophistication. Every element, from the choice of materials to the proportioned façade, has been carefully considered to create a sense of understated presence.

Inside, the entrance hall immediately impresses with herringbone flooring that flows beneath a fitted door mat, white wall panelling adding subtle structure, and a stair runner held in place by monochrome rods that climbs to the upper floors with effortless style.

The sitting room is both inviting and refined. Neutral tones provide the perfect backdrop for a wood burner set beneath a traditional wooden mantle, accompanied by a Fortnum & Mason basket. An integrated wall fish tank is visible from both the sitting and kitchen-dining areas, introducing a quietly remarkable feature that elevates everyday living.

The kitchen and dining area balances practicality with thoughtful design. Recessed space accommodates a large American fridge freezer, dual ovens cater to culinary needs, and two wine fridges provide entertaining essentials.



M&B

20 Mill Road

Hethersett, Norwich

Bi-fold doors open onto the garden, where an outdoor kitchen makes entertaining in warmer months a pleasure. A large laundry room ensures household tasks are handled with ease, while smart systems—including an EV charging point, Nest cameras, doorbell, and thermostat—integrate seamlessly without compromising style.

A study on the ground floor is a statement in itself. Bespoke marble-style shelving and a deep navy palette create a space that is at once professional and personal. Above, a feature light over the staircase enhances the home's airy proportions, drawing the eye to the upper landing.

The master bedroom exudes considered luxury. A panelled feature wall with integrated lighting, plush carpeting and an ensuite with a large walk-in shower and heated towel rail combine to create a suite that is both practical and indulgent. Two further double bedrooms share a marble-inspired bathroom, complete with a small TV above the bath, demonstrating that no detail has been overlooked.

Outside, the garden offers privacy and versatility. Immaculate lawn, mature hedging and a smart sprinkler system frame the space, while decking and the negotiable hot tub create opportunities for relaxation and entertaining. The enclosed layout ensures a safe environment for children and pets alike.



M&B

20 Mill Road

Hethersett, Norwich

With a new roof, new windows, and a complete transformation carried out to the highest standard, this home has been elevated far beyond the ordinary. It balances elegance and functionality, presenting a property that is immediately liveable while clearly exceptional in quality and finish—a Hethersett family home with true distinction.

Agents Note

Sold Freehold

Connected to all mains services.



M&B

Dreaming of this home? Let's make it a reality



Meet *Liam*
Branch Manager



Meet *Rosie*
Senior Sales Progressor



Meet *Tristan*
Senior Property Valuer

Minors & Brady
Your home, our market

 norwich@minorsandbrady.co.uk

 01603 365085

 107 Unthank Road, Norwich, NR2 2PE

CAISTER-ON-SEA | DEREHAM | DISS | NORWICH | OULTON BROAD | WROXHAM



How can we support

- ✓ Residential Mortgages
- ✓ Protection & Insurance
- ✓ Buy-to-let (personal and limited company)



Matt Waters
Senior Mortgage
and Protection Advisor



Victoria Payne
Mortgage and
Protection Advisor

Scan to book your
appointment today



T: 01692 531372
E: enquiries@norfolk-mortgages.co.uk