



1 Meadow View, Swafield

North Walsham



Minors & Brady

1 Meadow View, Trunch Road

Swafield, North Walsham

Meadow View in Swafield offers a spacious two-bedroom bungalow with a bright lounge, well-equipped kitchen, conservatory, generous garden, off-road parking for four cars, garage, and stunning village views, all within easy reach of North Walsham.

- Attractive two-bedroom semi-detached bungalow
- Spacious lounge with built-in cabinet
- Fitted kitchen with good storage
- Generous rear garden with patio and established planting
- Quiet village location close to countryside walks
- Easy reach of North Walsham and local amenities
- Driveway parking for two vehicles



M&B



M&B

1 Meadow View, Trunch Road

Swafeld, North Walsham

Location

Swafeld is a picturesque Norfolk village, surrounded by open countryside yet only 2 miles from the bustling market town of North Walsham, which offers a variety of shops, restaurants, leisure facilities, and a train station with links to Norwich and the coast. The nearby Norfolk coastline, including the popular resorts of Mundesley and Cromer, is just a short drive away, making this an ideal spot for those seeking a peaceful rural lifestyle without compromising on convenience.

The Property

This two-bedroom semi-detached bungalow is located in the quiet village of Swafeld, offering convenient single-level living close to the amenities of nearby North Walsham.

Inside, you'll find a bright and spacious lounge featuring a practical built-in cabinet ideal for storage or display. Large windows allow plenty of natural light, creating an open and airy feel with fantastic views to the front and rear of the property.



M&B

1 Meadow View, Trunch Road

Swaffield, North Walsham

The adjacent kitchen has a functional layout with ample cupboards and work surfaces to meet everyday cooking needs. It also includes useful integrated appliances such as a built-in fridge freezer and a built-in tumble drier, adding to the overall practicality.

There are two well-sized bedrooms, both with good natural light and flexible use, whether as sleeping spaces, a home office, or guest rooms. The rooms are neutrally decorated, ready to be personalised by the new owner.

The large bathroom is fitted with a modern suite and is maintained to a good standard, providing a comfortable space for residents.

A notable addition to this property is the conservatory, which comes with blinds to allow control over light and privacy, making it a pleasant area to enjoy the garden views throughout the year.

Outside, the bungalow benefits from a lovely, generous garden filled with lush greenery and established plants. A paved patio area provides space for outdoor seating or dining, while the overall garden size offers opportunities for gardening or relaxation.

Parking is convenient with off-road parking for up to four cars, a garage, and an additional shed for storage or workshop use.

This property offers practical living accommodation in a peaceful village setting with easy access to local services and the surrounding Norfolk countryside.

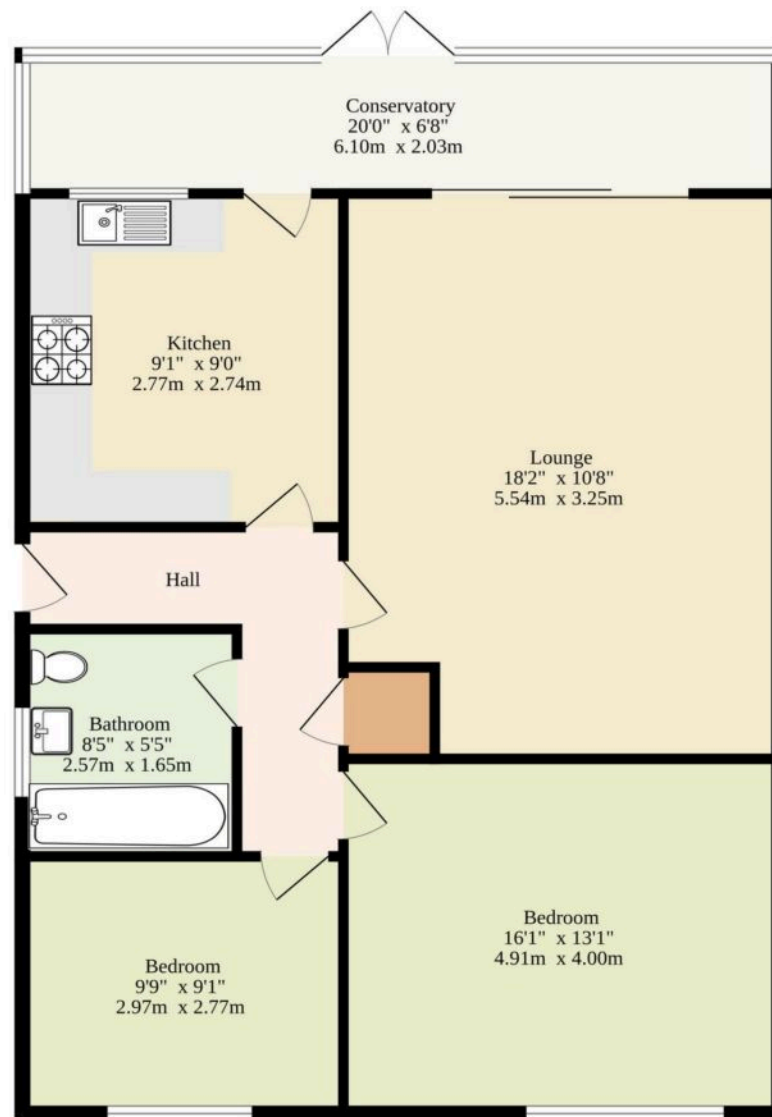
Agents Note

We understand the property will be sold freehold, connected to mains water, electricity and drainage.

Guide Price £275,000-£300,000. Meadow View in Swaffield



Ground Floor
986 sq.ft. (91.6 sq.m.) approx.



TOTAL FLOOR AREA : 986 sq.ft. (91.6 sq.m.) approx.

Whilst every attempt has been made to ensure the accuracy of the floorplan contained here, measurements of doors, windows, rooms and any other items are approximate and no responsibility is taken for any error, omission or mis-statement. This plan is for illustrative purposes only and should be used as such by any prospective purchaser. The services, systems and appliances shown have not been tested and no guarantee as to their operability or efficiency can be given.
Made with Metropix ©2025

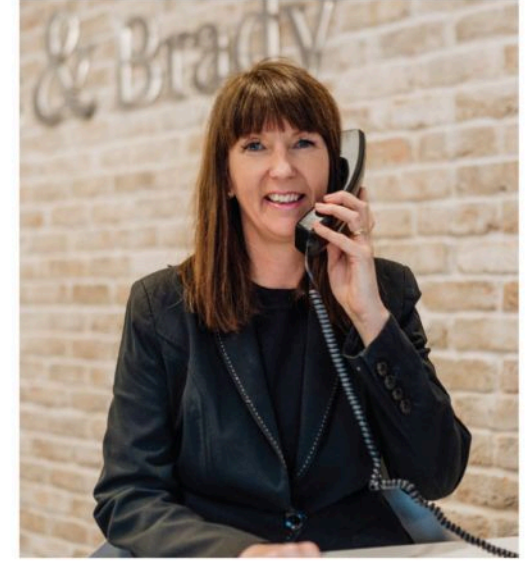
Dreaming of this home? Let's make it a reality



Meet *Abi*
Branch Partner



Meet *Karol*
Property Valuer



Meet *Claire*
Aftersales Team Leader

Minors & Brady
Your home, our market



wroxham@minorsandbrady.co.uk



01603 784088



6 Church Road, Wroxham, Norwich, NR12 8UG

CAISTER-ON-SEA | DEREHAM | DISS | NORWICH | OULTON BROAD | WROXHAM



How can we support

- ✓ Residential Mortgages
- ✓ Protection & Insurance
- ✓ Buy-to-let (personal and limited company)



Matt Waters
Senior Mortgage
and Protection Advisor



Victoria Payne
Mortgage and
Protection Advisor

Scan to book your
appointment today



T: 01692 531372
E: enquiries@norfolk-mortgages.co.uk