



27 Lytham Hopton Holiday Village, Hopton

Hopton



Minors & Brady



# 27 Lytham Hopton Holiday Village

## Hopton

Beautiful position, well-maintained and excellent on-site facilities, this detached park home in Hopton Holiday Village offers comfort, style, and coastal charm. Set in an elevated position at the top of a quiet cul-de-sac, it features a bright open-plan living space, a carpeted sitting area, and a well-equipped kitchen with stylish herringbone flooring. Three generous bedrooms and a modern shower room provide ample space for family or guests, while the south-facing decking area is ideal for relaxing in the sun. The home has been meticulously maintained, ready for immediate enjoyment or as a potential rental investment. Hopton Holiday Village itself boasts exceptional on-site facilities, including indoor pools, soft play, family entertainment, and a range of dining options. With direct beach access, sea views, and a vibrant activity schedule, this home offers the ultimate seaside escape for families and holidaymakers alike.

- Detached park home in the sought-after Hopton Holiday Village
- Elevated position at the top of a quiet cul-de-sac
- South-facing decking area perfect for relaxing in the sun
- Bright open-plan living space with carpeted sitting area
- Well-equipped kitchen with stylish herringbone flooring
- Three generous bedrooms and modern shower room
- Meticulously maintained and ready for immediate use
- One allocated parking space for convenience
- Access to exceptional on-site facilities including pools, soft play, and entertainment
- Direct beach access with stunning sea views and a vibrant activity schedule







M&B



# 27 Lytham Hopton Holiday Village

## Hopton

### The Location

Set on the beautiful Norfolk coast, Hopton Holiday Village is a perfect escape for families and seaside lovers alike. With direct beach access and stunning sea views, the park offers a tranquil setting while still being packed with activities and entertainment. Guests can enjoy the charm of the east coast, from peaceful walks along the sand to exploring the vibrant coastal towns nearby.

Hopton Holiday Village provides an exceptional array of on-site amenities to keep the whole family entertained. The park features two indoor pools, including one with water slides and palm-tree fountains, as well as a more relaxed pool for gentle swimming. For younger guests, there's a soft play area, Mini Aerial Adventure, Inflatable Arena, climbing wall, football fun factory, and multiple outdoor play areas. Entertainment continues at the Marina Lounge, offering premium live shows and activities run by the friendly Seaside Squad.

Dining and takeaway options are plentiful, including Cook's Fish & Chips, Bertie's Ice Cream, Burger King, Papa Johns, and the family-friendly Garden House restaurant, which even welcomes dogs. The park also offers a family arcade, crazy golf, NERF Training Camp, Aqua Inflatable sessions, kart hire, archery coaching, creative sessions, and more, ensuring there's something for every age and interest.

For convenience, a mini market is on-site for essentials and souvenirs. With its combination of fun, relaxation, and stunning coastal surroundings, Hopton Holiday Village is an ideal location for a seaside break or a potential rental investment.



M&B



## 27 Lytham Hopton Holiday Village

### Hopton

#### Hopton Holiday Village, Hopton

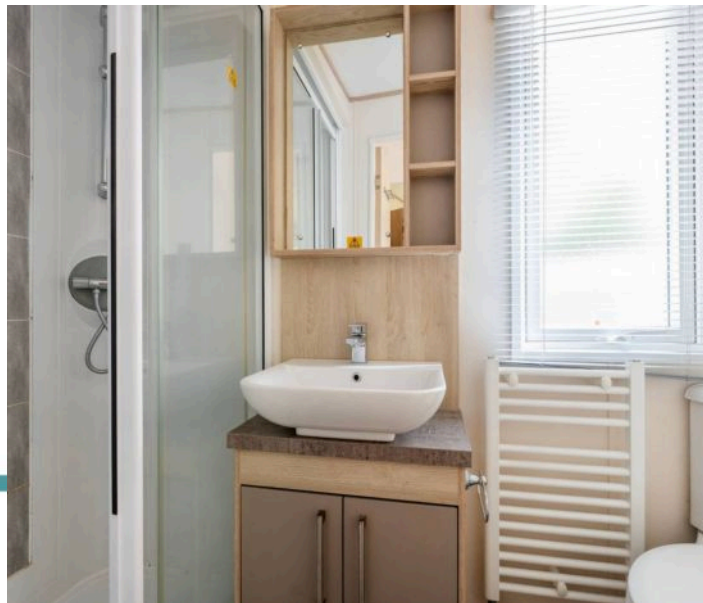
Welcome to this beautiful detached park home, perfectly situated within the sought-after Hopton Holiday Village. Set in an elevated position at the top of a quiet cul-de-sac, this home offers peace and privacy, with a wonderful sense of space and light throughout.

Steps ascend to a generous south-facing decking area, the ideal spot to relax and enjoy the sunshine.

Inside, you are welcomed into a bright open-plan living space, designed to capture natural light from all angles.

The sitting area is carpeted for comfort, while the kitchen is finished with stylish herringbone flooring and comes well-equipped, blending practicality with modern design.

This home offers three well-proportioned bedrooms, providing plenty of space for family or guests, along with a smart shower room. The property has been kept to an excellent standard, with its condition reflecting the care and attention it has received.





## 27 Lytham Hopton Holiday Village

Hopton

Hopton Holiday Village itself boasts a fantastic range of on-site facilities, making it a highly desirable location both for personal use and as a strong potential rental investment.

With one allocated parking space and its modern, well-kept presentation, this home is ready to be enjoyed immediately.

### Agents Note

Sold Freehold

Connected to all mains services

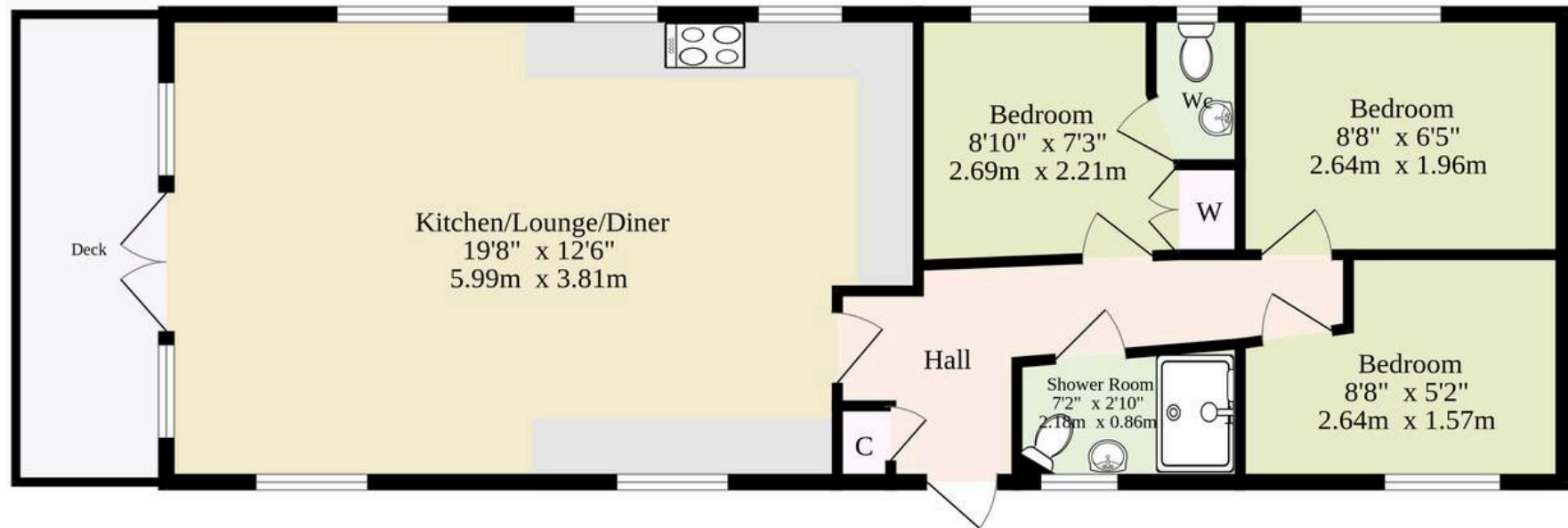
Ground Rent £9,800 paid annually with maintenance fees included



M&B



**Ground Floor**  
**492 sq.ft. (45.7 sq.m.) approx.**



**TOTAL FLOOR AREA : 492 sq.ft. (45.7 sq.m.) approx.**

Whilst every attempt has been made to ensure the accuracy of the floorplan contained here, measurements of doors, windows, rooms and any other items are approximate and no responsibility is taken for any error, omission or mis-statement. This plan is for illustrative purposes only and should be used as such by any prospective purchaser. The services, systems and appliances shown have not been tested and no guarantee as to their operability or efficiency can be given.

Made with Metropix ©2025

# Dreaming of this home? Let's make it a reality



*Meet Sarah*  
Senior Property Consultant



*Meet James*  
Property Consultant



*Meet Lauren*  
Property Consultant

**Minors & Brady**  
*Your home, our market*

 [caister@minorsandbrady.co.uk](mailto:caister@minorsandbrady.co.uk)

 01493 806188

 48 High Street, Caister-on-Sea, Great Yarmouth, NR30 5EH

CAISTER-ON-SEA | DEREHAM | DISS | NORWICH | OULTON BROAD | WROXHAM





## How can we support

- ✓ Residential Mortgages
- ✓ Protection & Insurance
- ✓ Buy-to-let (personal and limited company)



**Matt Waters**  
Senior Mortgage  
and Protection Advisor



**Victoria Payne**  
Mortgage and  
Protection Advisor

Scan to book your  
appointment today



T: 01692 531372  
E: [enquiries@norfolk-mortgages.co.uk](mailto:enquiries@norfolk-mortgages.co.uk)